

Contrabass

Felix Mendelssohn Bartholdy

Sinfonia X h-moll

# Sinfonia X h-moll

Felix Mendelssohn Bartholdy

Adagio  
pizz. 1 2 3 4 5 6 7 arco

9

18

26

34

41 Allegro

46

52

57

62

68

1 2 3 4 5 6

Contrabass

76



84



90



98



108



120



132



138



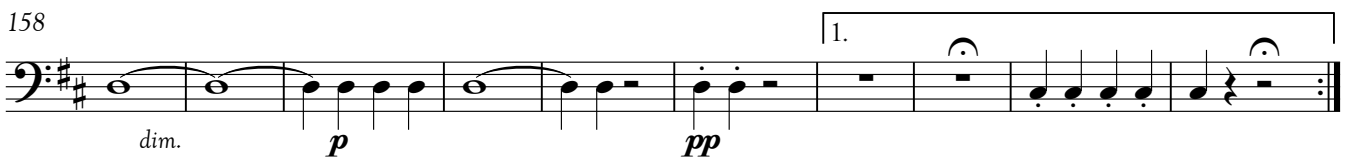
144



150



158



Contrabass

168 2. **6**

*f*

179 **3**

187

193

198

203

*sempre f*

208

213

*ff* **1**

219

**2 3 4 5 6 7 8**

226

*p*

232

238

Measures 238-244: Bass clef, two sharps (F# and C#). Measures 238-240 feature a melodic line with eighth notes and quarter notes. Measure 241 has a whole note rest. Measures 242-244 continue the melodic line with eighth notes and quarter notes.

245

Measures 245-249: Bass clef, two sharps. Measures 245-247 continue the melodic line. Measure 248 features a melodic line starting with a forte (*f*) dynamic. Measure 249 continues the melodic line.

250

Measures 250-254: Bass clef, two sharps. Measures 250-252 feature a melodic line with eighth notes. Measure 253 features a melodic line starting with a forte (*f*) dynamic. Measure 254 continues the melodic line.

255

Measures 255-261: Bass clef, two sharps. Measures 255-257 feature a melodic line with eighth notes. Measures 258-261 feature a sequence of chords, numbered 1 through 5, indicating fingerings.

262

Measures 262-276: Bass clef, two sharps. Measures 262-264 feature a sequence of chords, numbered 6 through 7. Measures 265-276 feature a melodic line with quarter notes, ending with a first fingering (1) above the final chord.

270

Measures 270-276: Bass clef, two sharps. Measures 270-272 feature a sequence of chords, numbered 2 through 4. Measures 273-276 feature a melodic line starting with a fortissimo (*ff*) dynamic, including a trill (*tr*) in measure 274.

277

Measures 277-282: Bass clef, two sharps. Measures 277-282 feature a melodic line starting with a piano (*p*) dynamic, consisting of eighth notes and quarter notes.

283

Measures 283-293: Bass clef, two sharps. Measures 283-293 feature a melodic line of half notes with a slur, ending with a whole note.

294

Measures 294-304: Bass clef, two sharps. Measures 294-304 feature a melodic line of half notes with a slur, ending with a whole note.

305

Measures 305-312: Bass clef, two sharps. Measures 305-312 feature a melodic line of half notes with a slur, ending with a whole note.

313

Measures 313-318: Bass clef, two sharps. Measures 313-315 feature a melodic line of quarter notes. Measures 316-318 feature a melodic line starting with a pianissimo (*pp*) dynamic, consisting of half notes and a whole note with a fermata.

320



327



334



341



346

352 *più presto*

359



366



373



378

