

**Johann Gottlieb Graun**

**Suite  
a-moll**

**(Graun WV C:XI:16)**

**Violine 2**

**herausgegeben**

**von**

**Werner Jaksch**

# Suite a-moll

## Ouverture

J. G. Graun

Violino 2



6



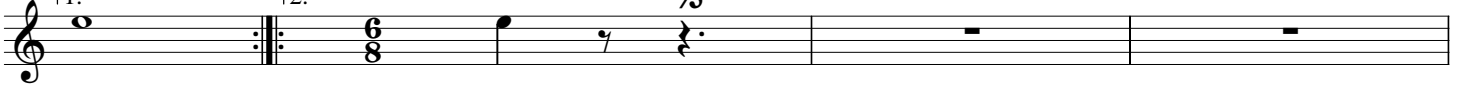
10



14



18



22



26



30



34



38



42



46



59



62



66

70

79

83

87

103

106

110

114

118

122

126

132

# 1. Menuet

Musical score for Menuet, measures 1-47. The score is in 3/4 time and features dynamics of *p*, *f*, and [*f*]. It includes first and second endings at the end of the piece.

## 2. Duetto tacet

Trio tacet/Menuet da capo

## 3. (Menuet)

Musical score for (Menuet), measures 1-21. The score is in 3/4 time and includes first and second endings.

## 4. Sarabande

Musical score for Sarabande, measures 1-16. The score is in 3/4 time and features dynamics of *p* and *f*.

23

29

## 5. Aria 1

*poco Allegro*

9

17

25

34

Aria 2 tacet/Aria 1 da capo

## 6. Bouree

11

21

31

Duetto tacet/Bouree dacapo

## 7. Louree



## 8. Aria 3

*Allegro*



## Aria 4

Musical score for Aria 4, measures 1 through 32. The piece is in G major (two sharps) and 2/4 time. It consists of a single melodic line with various rhythmic patterns, including eighth and sixteenth notes, and rests. Measure 11 is marked with a box containing the number 11. Measure 21 is marked with a box containing the number 21. Measure 31 is marked with a box containing the number 31. The piece concludes with a double bar line and repeat dots in measure 32.

Aria 3 da capo

## 9. Chaconne

Musical score for Chaconne, measures 1 through 76. The piece is in G major (two sharps) and 3/4 time. It features a complex rhythmic structure with many sixteenth and thirty-second notes. Measure 8 is marked with a box containing the number 8. Measure 16 is marked with a box containing the number 16, and a '13' above the staff indicates a 13-measure rest. Measure 32 is marked with a box containing the number 32. Measure 36 is marked with a box containing the number 36. Measure 40 is marked with a box containing the number 40. Measure 44 is marked with a box containing the number 44. Measure 55 is marked with a box containing the number 55, and a '13' above the staff indicates a 13-measure rest. Measure 76 is marked with a box containing the number 76, and an '18' above the staff indicates an 18-measure rest. The piece concludes with a double bar line and repeat dots in measure 76.

102



109



117



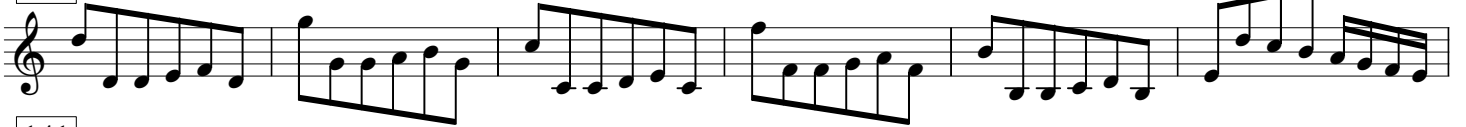
124



129



135



141



147



153



159



164



171



178



185





# 10. Menuet

*Allegro*

Musical score for the first section of the Minuet, measures 1-58. The score is written in treble clef, 3/4 time, and D major. It features a melody with dynamic markings of *p* (piano) and *f* (forte), and includes several triplet figures. Measure numbers 9, 16, 23, 30, 37, and 43 are indicated in boxes. The section concludes with a double bar line and repeat sign at measure 58.

## Trio

Musical score for the Trio section, measures 1-13. The score is written in treble clef, 3/4 time, and D major. It features a steady eighth-note accompaniment pattern. Measure numbers 7 and 13 are indicated in boxes. The section concludes with a double bar line and repeat sign at measure 13.

Menuet da capo