

1ST COPY.

THE LITTLE BOAT THAT WENT AWAY TO SEA



SONG AND CHORUS

WORDS AND MUSIC BY

CHARLES GRAHAM.



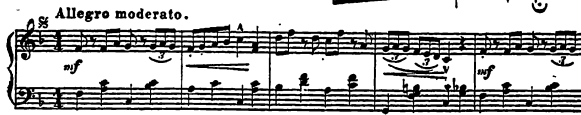
HOWLEY, HAVILAND & CO.
4 East 20th Street
NEW YORK



TRY THESE ON THE PIANO.

The Watermelon Dance.

Introduction. (Dance Characteristic.) by Chas. J. Wilson, Op. 498.

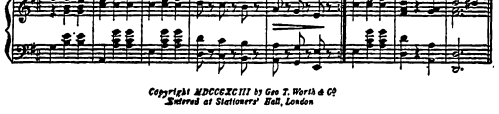


Copyright MDCGCCXIII by Geo. T. Worth & Co
Entered at Stationer's Hall London

BRIDAL DREAMS.

Waltzes.

GUY LIVINGSTONE.

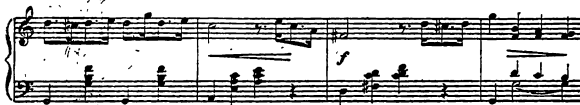


Copyright MDCGCCXIII by Geo. T. Worth & Co
Entered at Stationer's Hall London

Dance of the Milkmaids.

Tempo di Schottische.

By I. BENEDICT.



Copyright MDCGCCXIII by Geo. T. Worth & Co
Entered at Stationer's Hall London.

"EGYPTIAN SOLDIERS."

Introduction.

March Patrol.

Chas. J. Wilson, Op. 491.



Copyright MDCGCCXIII by Geo. T. Worth & Co
Entered at Stationer's Hall London.

COMPLETE COPIES CAN BE HAD AT ALL MUSIC STORES OR FROM THE PUBLISHERS,

HOWLEY, HAVILAND & CO.,

4 EAST 20th STREET,

NEW YORK.

DON'T FAIL TO GET

"YES I LOVE YOU," BY STULTS.

Answer to "THE SWEETEST STORY EVER TOLD."

SONG AND CHORUS.

by **CHAS. GRAHAM.**

Moderato.

A musical score for the song 'The Rose Tree'. It features a treble and bass staff. The treble staff has a melody with a key signature of one flat (Bb) and a common time signature (C). The bass staff provides a harmonic accompaniment. The melody starts with a half note G4, followed by a quarter note A4, and then a series of eighth notes. The accompaniment consists of chords and single notes. The piece ends with a double bar line.

1. A Moth-er watched her chil-dren play-ing by the sea one day, Her

2. And when they found him miss-ing and the lit-tle boat as well, They

son, a lit - tle boat was sail - ing out in - to the bay, The
 knew he'd gone a sail - ing, but which way they could not tell, They

string that held it broke, and soon the boat was out of sight, His
sent a boat to find him and they searched the wa - ter 'round, And

ritard.

sis - ter could not cheer him, he was in a sor - ry plight
just at dark the lit - tle boat and boy were safe - ly found

accel. *tempo.*

"Nev - er mind," the moth - er said, "come lit - tle ones to me, And I'll
How they kissed and hugged him when they brought him home once more, And he

tell you of an - oth - er lit - tle boat that went to sea.
nev - er goes a sail - ing now, he says he likes the shore.

REFRAIN.

'Twas a naught-y lit - tle boy who went a - sail - - ing, All

by himself he thought it would be fun, ——— To bor-row Daddy's boat and go a

whal - - ing, And Dad-dy nev - er knew that he was gone. ——— He

sailed a - long un - til the stars were peep - - - ing; And

then at home he longed again to be ——— 'Till tired completely out he went a

sleep in The lit - tle boat that went a - way to sea. ———

ASK FOR
 RAYMON MOORE'S NEW SONG,
"REMEMBER ME."
 THE ANSWER TO "SWEET MARIE."

LATEST POPULAR SONGS.

Respectfully dedicated
to the memory of HARRY KENNEDY:

JUST SAY GOOD-BYE AGAIN.

answer to

"SAY AU REVOIR BUT NOT GOODBYE."

REFRAIN.

a tempo.

by CHARLES MILLER.

Just say good-bye, good-bye a . . gain. Although the

part - ing causes pain. For your dear-sake, my heart will

break. Just say good-bye. Just say good-bye good-bye a . . gain.

Copyright MDCCLXXIV by Howley, Harland & Co.
English Copyright secured.

Answer to "The Sweetest Story Ever Told" YES, I LOVE YOU

Moderato.

Words and Music by R. M. SHULTS.

mp

mp Tempo di Gavotte.
I'll an-swer thee the ques-tion thou dost ask. *To*
The stars a-bove could nev-er be more true. *Than*

say the word is but an-easy task: My heart for thee is ev-er warm and
is my heart, my dearest one, for you! I'd love to tell the sto-ry o'er and

truer. I'll tell the sto-ry old yet ev-er new. *The*
And in thy pres-ence be for-ev-er more. *The*

Copyright MDCCLXXIII by Howley, Harland & Co.
English Copyright secured.

TAKE A SEAT, OLD LADY.

SONG AND CHORUS.

Words and Music by PAUL DRESSER.

CHORUS.

Take a seat old la-dy. For you are wel-come there,

Do not hes-i-tate man, For I own that chair; I know you must be tired. Be-

sides, you're old and gray. You'll find it there and welcome, when you pass this way.

Copyright MDCCLXXIV by Howley, Harland & Co.
English Copyright secured.

WHEN SHE'S JUST ABOUT TO FALL.

Words by CY WARMAN.

Music by RAYMOND MOORE.

Moderato e press.

mf *dim. e rall.*

I have you seen the hap-py mother when her babe be-gins, to talk? Have you
Now the ha-by is a woman, she is bend-ing o'er a bed, Where the

seen her teach the ti-ny, tan-gled feet the way to walk? Ev-er
spir-it from the bo-dy of her gen-tle moth-er fled, As the

near each athen-der shoulder, yet so fee-ble and so small, With her
life-less limbs grow cold-er, moth-er! moth-er! hear her call. But there

Copyright MDCCLXXIV by Howley, Harland & Co.
English Copyright secured.

FOR SALE AT ALL MUSIC STORES.

HARDMAN PIANO,

Hardman, Peck & Co., Manufacturers,

5th Avenue and 19th St., New York.