



49 IS

53 IN

57 FRONT

61

65 ATTICA

69 IS

73 IN

77 FRONT

81 OF

85

89 ATTICA

93 IS

97 IN



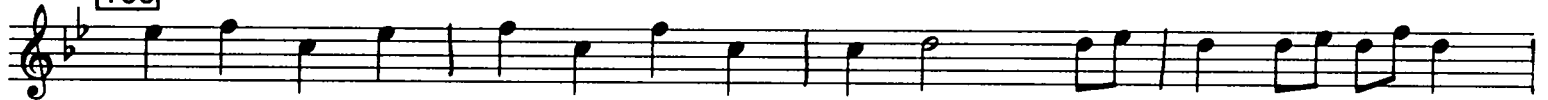
101 FRONT



105 OF



109 ME.



113 ATTICA



117 IS



121 IN



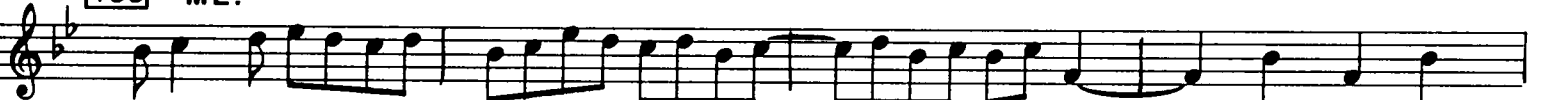
125 FRONT



129 OF



133 ME.



137 IS



141 IN



145 FRONT



149

OF

153

ME.

157

IN

161

FRONT

165

OF

169

ME.

173

FRONT

177

OF

181

ME.

185

OF

189

ME.

193

ME.

197

A musical score for a vocal line, consisting of ten staves of music. The music is written in a single melodic line on a treble clef staff with a key signature of one flat (B-flat). The lyrics are: "OF ME. IN FRONT OF ME. FRONT OF ME. OF ME. OF ME. ME." The lyrics are placed above the corresponding notes on each staff. The first staff (149) starts with "OF". The second staff (153) starts with "ME.". The third staff (157) starts with "IN". The fourth staff (161) starts with "FRONT". The fifth staff (165) starts with "OF". The sixth staff (169) starts with "ME.". The seventh staff (173) starts with "FRONT". The eighth staff (177) starts with "OF". The ninth staff (181) starts with "ME.". The tenth staff (185) starts with "OF". The eleventh staff (189) starts with "ME.". The twelfth staff (193) starts with "ME.". The final staff (197) shows a long, sweeping melodic line with a fermata over the final note. The page number "4" is centered at the top.