

Bassoon 2 or Contra

(The Contra is treated here as a non-transposing instrument. The "extra notes" are either in case a 2nd bassoon is used or to help with the ledger lines.)

Brandenburg Concerto No 4 - 3rd movement

(hns) (cls)

mf

6 (obs) (bns) (cls)

3 4 *f*

17 (ob1) (bns) (ob2)

p *mp*

23 (cls)

29 *pp*

35 (cl1) (bns)

42 (bns) *mp* *mf*

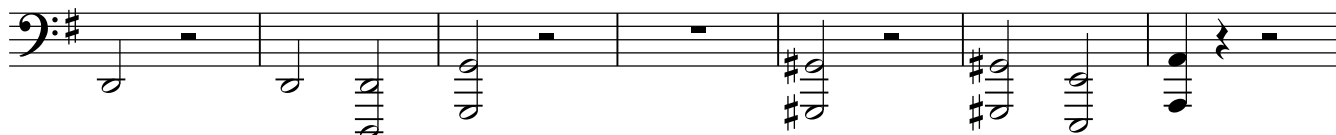
25

71 *mf*

77 (ob1) (ob2)

83 (obs) 7

95 (cls)



102

(ob1)

(hn1)

(cls)

(cls)

3

7

14

2

129

(ob1)

(bns)



136

*mf**mf*

142

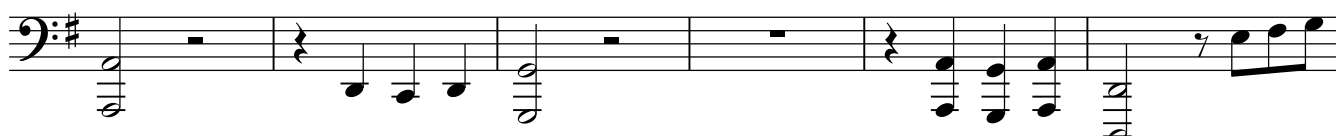


148

(cls)



154

mf

160



164

*f*

169

*mf*

174 (ob1) *f* *f* *mf* (cl1)

180 (cl2) 5 (cl1) *f*

190 (ob1) *mf* (ob2)

196 9 *f*

210 *mf*

216

224

229 *ff* (bns) (ob2, cl2)

235 *ff* (bns) (ob2, cl2)

240