

Quinto Ballo detto lo Ninfe di Senna

Lorenzo Allegri (c1573-1648)

Musical notation for the first part of the piece, measures 1-12. The music is in treble clef, common time (C), and consists of a single melodic line. Measure numbers 7 and 12 are indicated at the start of their respective staves. The piece concludes with a double bar line and a 6/4 time signature change.

Seconda Parte: Canario

Musical notation for the second part of the piece, measures 1-13. The music is in treble clef, 6/4 time, and consists of a single melodic line. Measure numbers 1, 5, 9, and 13 are indicated at the start of their respective staves. The piece concludes with a double bar line and a common time (C) signature change.

Terza Parte: Gavotta

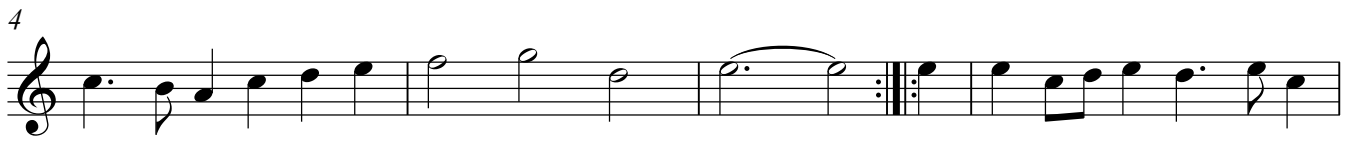
Musical notation for the third part of the piece, measures 1-11. The music is in treble clef, common time (C), and consists of a single melodic line. Measure numbers 1, 7, and 11 are indicated at the start of their respective staves. The piece concludes with a double bar line and a 6/4 time signature change.

Quarta & Ultima Parte: Corrente

15 *1*



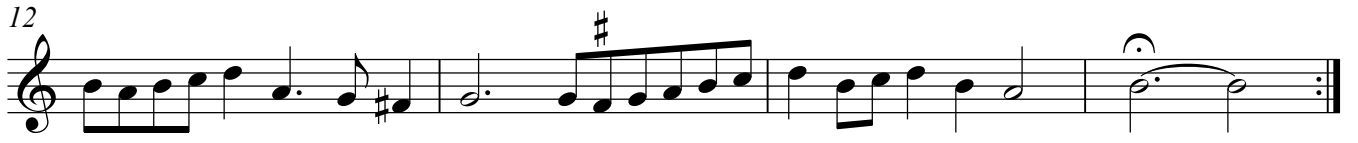
4



8



12



Quinto Ballo detto lo Ninfe di Senna

Lorenzo Allegri (c1573-1648)

7

12

6/4

Detailed description: This section contains the first part of the piece. It consists of three staves of music in common time (C). The first staff starts with a treble clef and a key signature of one sharp (F#). The second staff begins with a measure rest and a '7' above it. The third staff begins with a measure rest and a '12' above it, ending with a double bar line and a 6/4 time signature.

Seconda Parte: Canario

1

5

9

13

6/4

Detailed description: This section contains the second part of the piece, titled 'Seconda Parte: Canario'. It consists of three staves of music in 6/4 time. The first staff starts with a treble clef and a key signature of one sharp (F#). The second staff begins with a measure rest and a '5' above it. The third staff begins with a measure rest and a '9' above it. The fourth staff begins with a measure rest and a '13' above it, ending with a double bar line and a 6/4 time signature.

Terza Parte: Gavotta

1

7

11

6/4

Detailed description: This section contains the third part of the piece, titled 'Terza Parte: Gavotta'. It consists of three staves of music in common time (C). The first staff starts with a treble clef and a key signature of one sharp (F#). The second staff begins with a measure rest and a '7' above it. The third staff begins with a measure rest and an '11' above it, ending with a double bar line and a 6/4 time signature.

Quarta & Ultima Parte: Corrente

15 *1*

4

8

12

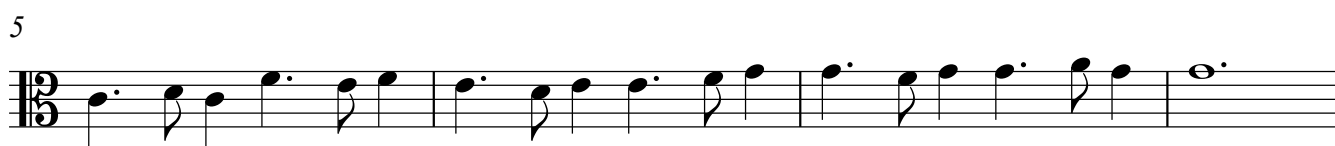
Viola 1

Quinto Ballo detto lo Ninfe di Senna

Lorenzo Allegri (c1573-1648)



Seconda Parte: Canario



Terza Parte: Gavotta

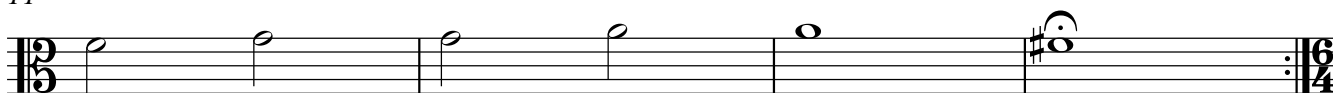
1



7



11



15

Quarta & Ultima Parte: Corrente

1



5



9



13



Viola 2

Quinto Ballo detto lo Ninfe di Senna

Lorenzo Allegri (c1573-1648)



7

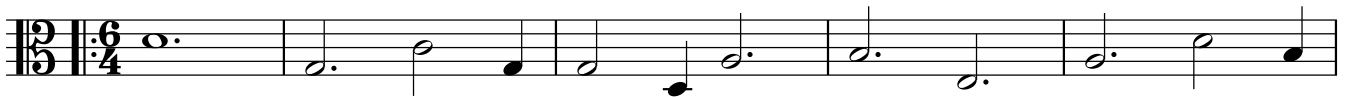


12

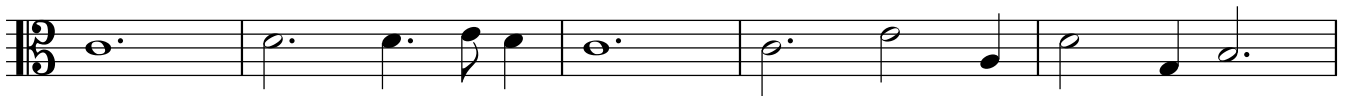


Seconda Parte: Canario

1



6



11



2

Terza Parte: Gavotta

1



7



11



15

1

Quarta & Ultima Parte: Corrente



5



9



12



Violoncello Quinto Ballo detto lo Ninfe di Senna

Lorenzo Allegri (c1573-1648)



8



13



Seconda Parte: Canario

1



7



12



Terza Parte: Gavotta

1



7



11



Quarta & Ultima Parte: Corrente

15

1



5



9



13

