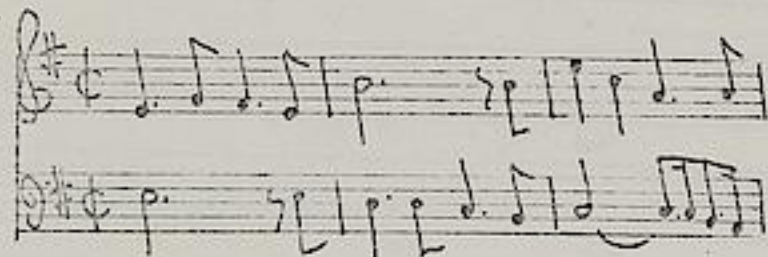


Telemann, Georg Philipp (1681-1767)

BRD DS Mus.ms 1034/24

Ouverture. del Sign. Telemann. / (e-moll) [Kopftitel]



5 Sätze.
vgl. Hoffmann.

Ms. 1. H. 18. Jh.

34,5 x 21 cm.

partitur [vl 1, 2, vla, b]: 3 Bl.

Alte Sign.: 3360.

Hoffmann, e 2.

3360 / 24
1034

Ouverture. 24

H. Lyn Telemann

Handwritten musical notation for the first system of the Ouverture, featuring four staves with various rhythmic patterns and clefs.

Handwritten musical notation for the second system of the Ouverture, continuing the melodic and harmonic development.

Handwritten musical notation for the third system of the Ouverture, showing more complex rhythmic figures.

Handwritten musical notation for the fourth system of the Ouverture, featuring a variety of note values and rests.

Handwritten musical notation for the fifth system of the Ouverture, concluding the piece with a final cadence.

Vol. (3)

Großherzogliche
Hessische
Kobbibliothek



Handwritten musical score for the first system, featuring four staves with various notes and rests.

Handwritten musical score for the second system, featuring four staves with various notes and rests.

Rondeaux

Handwritten musical score for the third system, featuring four staves with various notes and rests.

Handwritten musical score for the fourth system, featuring four staves with various notes and rests.

Handwritten musical score for the fifth system, featuring four staves with various notes and rests.

Handwritten musical notation on four staves, featuring various rhythmic patterns and melodic lines.

Douree

Handwritten musical notation on four staves, with the text "Da Capo" written above the first staff of each system.

Handwritten musical notation on four staves, continuing the piece with various rhythmic and melodic elements.

Handwritten musical notation on four staves, featuring a dense texture of notes and rests.

Handwritten musical notation on four staves, concluding the piece with a final cadence.

Menuet. 1. alternati vement.

10.34

Handwritten musical score for Menuet. 1. alternati vement. The score is written on four staves. The first staff is the treble clef, the second is the alto clef, the third is the bass clef, and the fourth is the tenor clef. The music is in 3/4 time and features a mix of eighth and sixteenth notes with some rests.

Menuet 2

Handwritten musical score for Menuet 2. The score is written on four staves. The first staff is the treble clef, the second is the alto clef, the third is the bass clef, and the fourth is the tenor clef. The music is in 3/4 time and features a mix of eighth and sixteenth notes with some rests.

Handwritten musical score for Menuet 3. The score is written on four staves. The first staff is the treble clef, the second is the alto clef, the third is the bass clef, and the fourth is the tenor clef. The music is in 3/4 time and features a mix of eighth and sixteenth notes with some rests.

Gigs.

Premiere Menuet
Su capu

Handwritten musical score for Gigs. The score is written on four staves. The first staff is the treble clef, the second is the alto clef, the third is the bass clef, and the fourth is the tenor clef. The music is in 3/4 time and features a mix of eighth and sixteenth notes with some rests.

Handwritten musical score for Premiere Menuet Su capu. The score is written on four staves. The first staff is the treble clef, the second is the alto clef, the third is the bass clef, and the fourth is the tenor clef. The music is in 3/4 time and features a mix of eighth and sixteenth notes with some rests.

This image shows a page of handwritten musical notation on aged, yellowed paper. The notation is organized into two systems, each consisting of four staves. The first system contains approximately 16 measures of music, while the second system contains approximately 12 measures. The notation includes various note values, rests, and clefs. The paper shows signs of age, including foxing and some staining. The bottom half of the page is mostly blank, with a large, faint scribble in the center.

