

Sonata da Camera n. 5

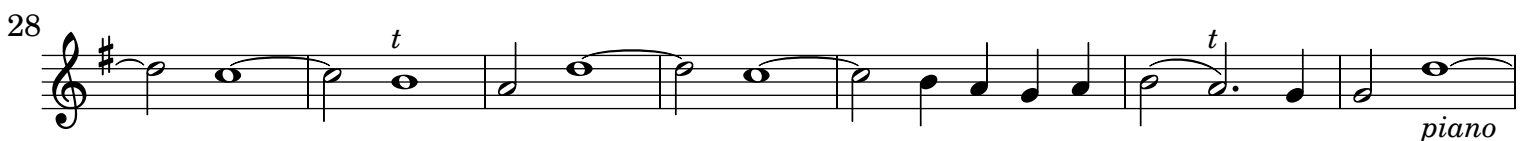
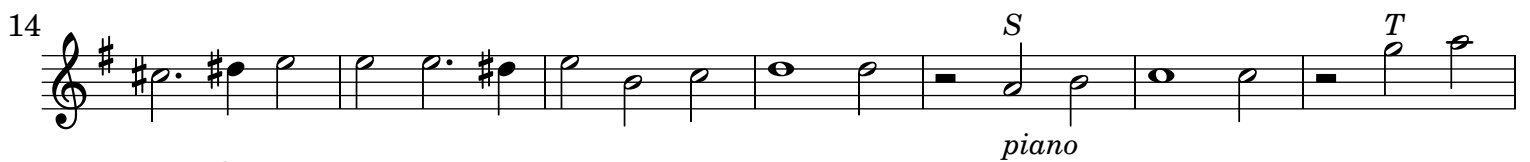
Violino Primo

G. Muffat (1653-1704)

[1.] Allemanda Grave



[2.] Adagio



[3.] Fuga

Musical score for Fuga, measures 1-48. The score is written in treble clef with a key signature of one sharp (F#) and a common time signature (C). The music features various dynamics and articulations:

- Measure 1: *S* (Sforzando)
- Measure 6: *T* (Tutti)
- Measures 11, 17, 22, 28, 33, 38, 43, 48: *t* (piano) and *T* (Tutti)
- Measure 17: *S* (Sforzando)
- Measure 48: *T* (Tutti) and *forte*

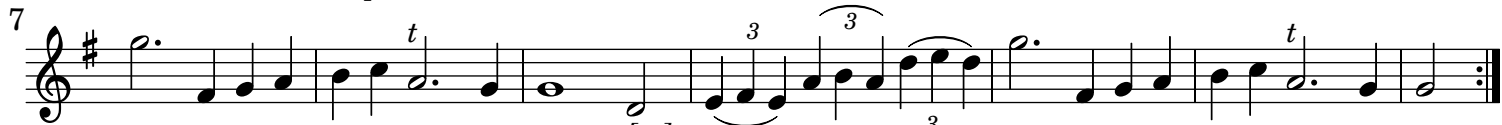
[4.] Adagio

Musical score for Adagio, measures 1-40. The score is written in treble clef with a key signature of one sharp (F#) and a common time signature (C). The music features various dynamics and articulations:

- Measure 1: *T* (Tutti)
- Measures 10, 21, 31, 40: *t* (piano)
- Measure 40: *forte*, *S* (Sforzando), *T* (Tutti), and *piano*

forte *Adagio* *piano*

[5.] Passaglia Grave



Violino Primo

113. *S*

121. *t*

12. *T S t T S b t*

13. *T t t t 3 3 3*

143. *t S p. 3 3 3*

149. *T t*

155. *t*

161. *t*

169. *t t t*

177. *S t*

16. *[T] t*

185. *t*

193. *S t T t S t T t S t T S t T p. p.*

201. *f. t S t T t S t T S t T t S t*

18. *t t t t S 3 3 3*

209. *T t t t S 3 3 3*

19.

215 *t* *T* 3 3 3 *t*

221 *S* 20.

226

232

237 *T* *t* *S* *t*

245 *T* 21. *t* *S* *T*

253 *t* *t* *t* *t* 22.

261 *t* *S* *T* *S* *T*

269 *S* *t* *T* *t* *S* *t* *T* *t* *S* *t* *T* *t*

277 *S*

281 23. *t*

287 *t*

1. Tutti 2. Solo *t* *t* (b) *t*

24. *T* *t* 3 3 3

25. 3

308 *t* *p.* *t* *t* *t*