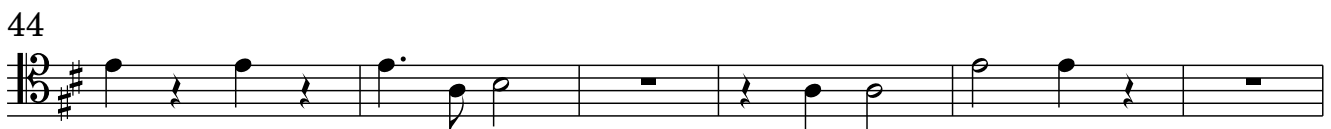
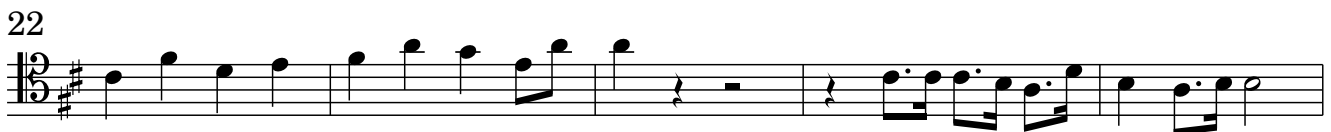
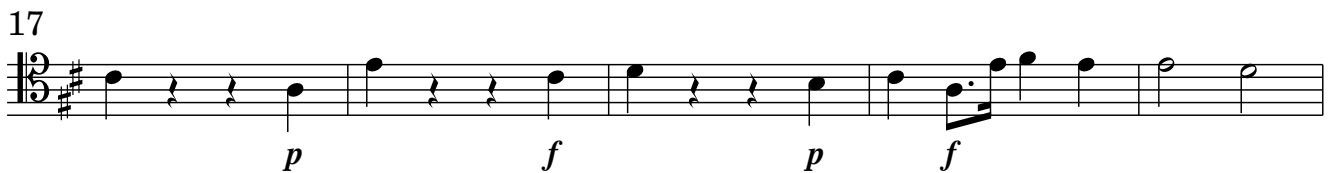
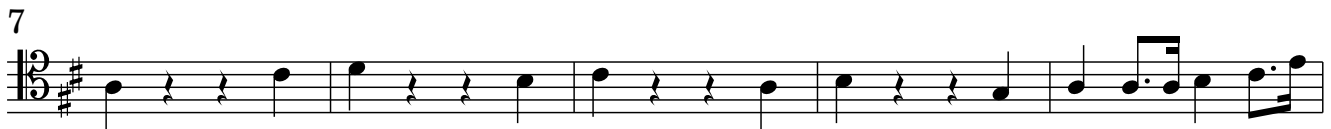


Sonata I (Armonico Tributo)

Viola 2 (Tenore)

Georg Muffat

Grave T 1. Sonata.



63



69



75



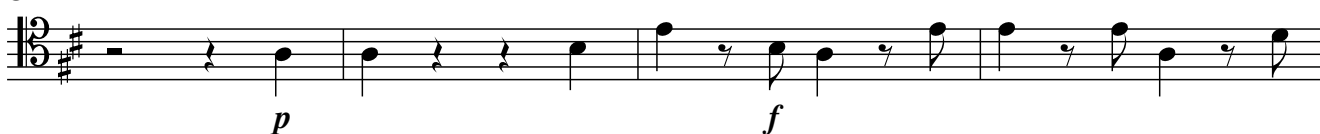
2. Allemanda.



4



8



12



16



22



26



28



3. Grave.

Musical score for Viola 2 (Tenore) for the third movement, "3. Grave." The score is written in 3/5 time and D major. It consists of seven staves of music, with measure numbers 6, 11, 16, 20, 23, and 27 indicated at the beginning of their respective staves. The dynamics are marked as follows:

- Staff 1 (measures 1-5): *f*
- Staff 2 (measures 6-10): *p*, *pp*, *f*
- Staff 3 (measures 11-15): *p*, *pp*, *ppp*, *f*
- Staff 4 (measures 16-19): *ff*, *p*
- Staff 5 (measures 20-22): *f*
- Staff 6 (measures 23-26): *ff*, *p*, *pp*
- Staff 7 (measures 27-30): *ppp*

4. Gavotta.

Musical score for Viola 2 (Tenore) for the fourth movement, "4. Gavotta." The score is written in 3/5 time and D major. It consists of three staves of music, with measure numbers 4 and 10 indicated at the beginning of their respective staves. The dynamics are marked as follows:

- Staff 1 (measures 1-3): *f*
- Staff 2 (measures 4-9): *f*
- Staff 3 (measures 10-13): *p*

5. Grave.

Musical score for Viola 2 (Tenore) for the 5th movement, "Grave". The score is in 3/2 time and D major. It consists of three staves of music. The first staff starts with a whole rest, followed by a half note G4 (p), a whole note G4 (f), and a whole rest. The second staff starts with a whole rest, followed by a half note G4 (p), a half note A4 (f), a half note B4 (f), a dotted half note G4 (f), and a whole rest. The third staff starts with a whole rest, followed by a half note G4 (p), a whole note G4 (pp), and a whole rest.

6. Menuet.

Musical score for Viola 2 (Tenore) for the 6th movement, "Menuet". The score is in 3/4 time and D major. It consists of four staves of music. The first staff starts with a quarter note G4 (f), followed by a quarter note A4, a quarter note B4, a quarter note G4, a quarter note F#4, a quarter note E4, a quarter note D4, a quarter note C#4, a quarter note B3, and a quarter note A3. The second staff starts with a quarter note G4, followed by a quarter note A4, a quarter note B4, a quarter note G4, a quarter note F#4, a quarter note E4, a quarter note D4, a quarter note C#4, a quarter note B3, and a quarter note A3. The third staff starts with a quarter note G4, followed by a quarter note A4, a quarter note B4, a quarter note G4, a quarter note F#4, a quarter note E4, a quarter note D4, a quarter note C#4, a quarter note B3, and a quarter note A3. The fourth staff starts with a quarter note G4, followed by a quarter note A4, a quarter note B4, a quarter note G4, a quarter note F#4, a quarter note E4, a quarter note D4, a quarter note C#4, a quarter note B3, and a quarter note A3. The score includes dynamic markings (f) and articulation marks (accents) over the notes.