

Sinfonia in Do maggiore [1799]

Corno II

L. Boccherini (1743-1805)

[1.] Grave

Musical notation for the first movement, Grave. The score begins with a treble clef, a common time signature (C), and a piano (pp) dynamic marking. The melody consists of a series of eighth notes, followed by a series of quarter notes, and ends with a fermata.

[2.] All[egr]o e con Imperio

Musical notation for the second movement, All[egr]o e con Imperio. The score begins with a treble clef, a common time signature (C), and a forte (f) dynamic marking. The melody consists of a series of eighth notes, followed by a series of quarter notes, and ends with a fermata.

11

Musical notation for the second movement, measures 11-24. The score begins with a treble clef, a common time signature (C), and a forte (f) dynamic marking. A triplet of eighth notes is indicated. The melody consists of a series of eighth notes, followed by a series of quarter notes, and ends with a fermata. Dynamic markings include *f*, *p*, and *f*.

25

Musical notation for the second movement, measures 25-44. The score begins with a treble clef, a common time signature (C), and a fortissimo (ff) dynamic marking. A septuplet of eighth notes is indicated. The melody consists of a series of eighth notes, followed by a series of quarter notes, and ends with a fermata. Dynamic markings include *ff*, *p*, and *ff*.

45

Musical notation for the second movement, measures 45-55. The score begins with a treble clef, a common time signature (C), and a forte (f) dynamic marking. The melody consists of a series of eighth notes, followed by a series of quarter notes, and ends with a fermata. Dynamic markings include *f*, *f*, and *p*.

56

Musical notation for the second movement, measures 56-80. The score begins with a treble clef, a common time signature (C), and a forte (f) dynamic marking. A 15-measure rest is indicated. The melody consists of a series of eighth notes, followed by a series of quarter notes, and ends with a fermata. Dynamic markings include *f* and *pp*.

81

Musical notation for the second movement, measures 81-98. The score begins with a treble clef, a common time signature (C), and a piano (p) dynamic marking. A 'Soli' marking is present. The melody consists of a series of eighth notes, followed by a series of quarter notes, and ends with a fermata. Dynamic markings include *p*, *f*, *f*, and *f*.

99

Musical notation for the second movement, measures 99-120. The score begins with a treble clef, a common time signature (C), and a forte (f) dynamic marking. A 9-measure rest is indicated. The melody consists of a series of eighth notes, followed by a series of quarter notes, and ends with a fermata. Dynamic markings include *f*, *f*, *f*, *p*, and *p.mo sempre*.

121

Musical notation for the second movement, measures 121-130. The score begins with a treble clef, a common time signature (C), and a forte (f) dynamic marking. A 4-measure rest and a 3-measure rest are indicated. The melody consists of a series of eighth notes, followed by a series of quarter notes, and ends with a fermata. Dynamic markings include *f*.

139



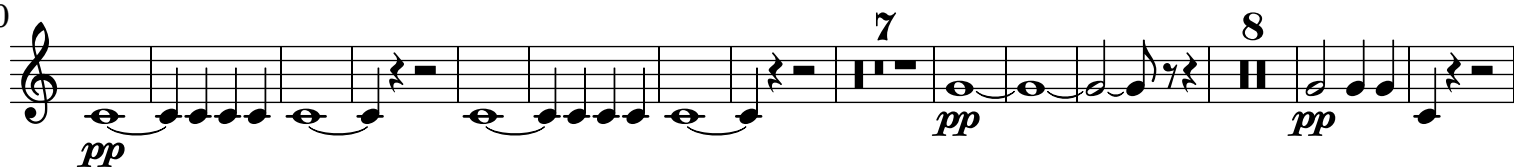
148



158



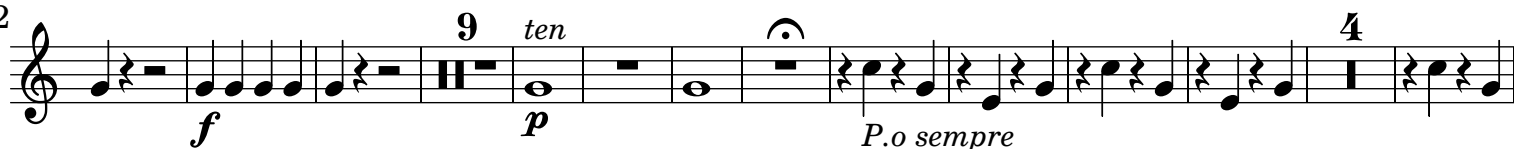
170



198



212



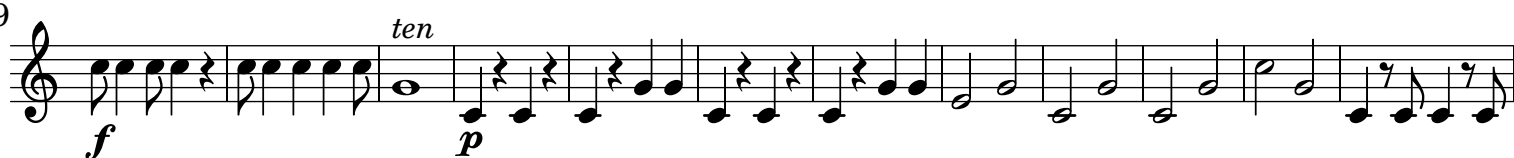
237



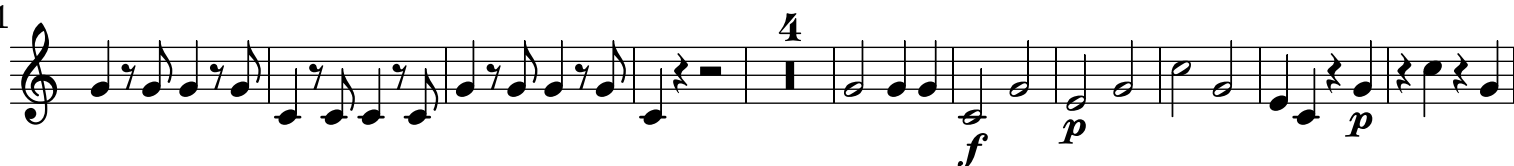
251



259



271



285



[3.] Grave

[4.] All[egr]o

81

89

97

117

135

153

174

191

212

f.mo sempre

Detailed description of the musical score: The score is for the second horn part of Boccherini's Symphony 1799. It consists of ten staves of music. The key signature is two flats (B-flat and E-flat). The time signature is 4/4. The score includes various dynamics: *ff* (fortissimo), *f* (forte), *p* (piano), and *pp* (pianissimo). There are also markings for articulation, such as slurs and accents. Some measures include fingerings (e.g., 4, 8, 2). The score ends with a fermata and a repeat sign.