

# Canzon à 8

Choir II

Francesco Cavalli (1602-1676)

Violetta (part 5 of 8)

Musiche Sacre Concertanti (Venice, 1656)

4 5 4 10 1 15 1 20 25 30 35 40 45 50 55 60 65 70 75 80 85 90 95 100 105 1

Canzon à 8 (Choir II, violetta)

Musical score for Canzon à 8 (Choir II, violetta). The score is written on a single staff with a treble clef and a common time signature (C). The music consists of 11 measures. The first measure contains a whole rest. The second measure contains a half note G4. The third measure contains a half note A4. The fourth measure contains a half note B4. The fifth measure contains a half note C5. The sixth measure contains a half note B4. The seventh measure contains a half note A4. The eighth measure contains a half note G4. The ninth measure contains a half note F4. The tenth measure contains a half note E4. The eleventh measure contains a half note D4. There are two fermatas above the notes in the eighth and ninth measures. The number 110 is written above the eighth measure. The score ends with a double bar line.

# Canzon à 8

Choir II  
Violetta (part 5 of 8)

Francesco Cavalli (1602-1676)  
Musiche Sacre Concertanti (Venice, 1656)

4 5 4 10

1 15 1

20 1

25 1 3 30 2 35

1 40 1 45

2 50

55 5 60

65

70 4 75

80 2 85 1

90 2 95 2

100 1 105 1

Canzon à 8 (Choir II, violetta)

110

The image shows a musical score for a vocal part. It consists of a single staff with a treble clef and a common time signature (C). The music begins with a whole rest, followed by a series of eighth notes: G4, A4, B4, C5, B4, A4, G4. This is followed by a quarter note G4, a quarter note F4, and a quarter note E4. The next measure contains a quarter note D4, a quarter note C4, and a quarter note B3. The final measure of the line contains a quarter note A3, a quarter note G3, and a quarter note F3. Above the staff, there are two bracket-like symbols, one above the first measure and one above the second measure. The number '110' is printed above the staff between the first and second measures. The score ends with a double bar line.

## Canzon à 8

Choir II

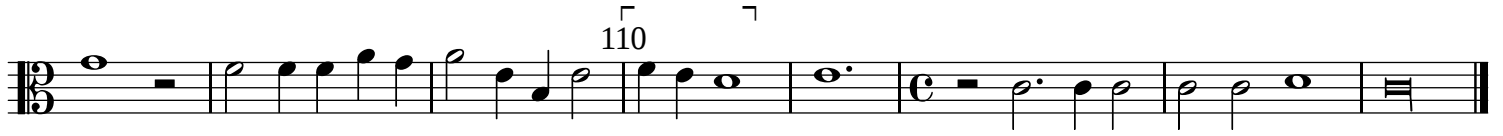
Francesco Cavalli (1602-1676)

Violetta (part 5 of 8)

Musiche Sacre Concertanti (Venice, 1656)

4 5 4 10 1 15 1 20 1 3 30 2 35 1 40 1 45 2 50 55 5 60 65 70 4 75 80 2 85 1 90 2 95 2 100 1 105 1

Canzon à 8 (Choir II, violette)



# Canzon à 8

Choir II

Francesco Cavalli (1602-1676)

Viola II (part 6 of 8)

Musiche Sacre Concertenti (Venice, 1656)

8 4 5 4 10

1 15 1

20 1 25 1

3 30 2 35 7 7

1 40 1 45

2 50 55 5

60

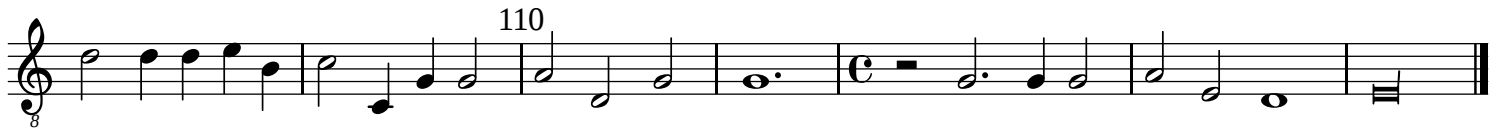
65 70 4

75

80 1 2 85 1

90 2 95 2

100 1 105 1





## Canzon à 8

Choir II

Francesco Cavalli (1602-1676)

Viola II (part 6 of 8)

Musiche Sacre Concertenti (Venice, 1656)

4 5 4 10

1 15 1

20 1 25 1

3 30 2 35

1 40 1 45

2 50 55 5

60

65 70 4

75

80 1 2 85 1

90 2 95 2

100 1 105 1

110



# Canzon à 8

Choir II  
Tenore (part 7 of 8)

Francesco Cavalli (1602-1676)  
Musiche Sacre Concertenti (Venice, 1656)

4 5 4 10

1 15 1

20 1 25 1

3 30 2 35

1 40 1 45

2 50 55 5

60

65 70 4

75

80 2 85 1

90 2 95 2

100 1 105 1



# Canzon à 8

Choir II  
Tenore (part 7 of 8)

Francesco Cavalli (1602-1676)  
Musiche Sacre Concertenti (Venice, 1656)

4 5 4 10

1 15 1

20 1 25 1

3 30 2 35

1 40 1 45

2 50 55 5

60

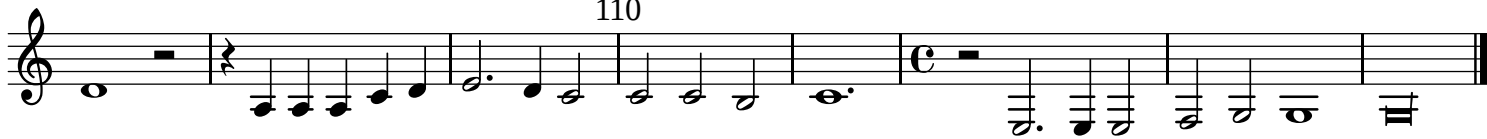
65 70 4

75

80 2 85 1

90 2 95 2

100 1 105 1



# Canzon à 8

Choir II  
Tenore (part 7 of 8)

Francesco Cavalli (1602-1676)  
Musiche Sacre Concertenti (Venice, 1656)

4 5 4 10

1 15 1

20 1 25 1

3 30 2 35

1 40 1 45

2 50 55 5

60

65 70 4

75

80 2 85 1

90 2 95 2

100 1 105 1





# Canzon à 8

Choir II

Francesco Cavalli (1602-1676)

Basso II (part 8 of 8)

Musiche Sacre Concertanti (Venice, 1656)

4 5 4 10

1 15 1

20 1

25 1 3 30 2 35

1 40 1 45

2 50 55 5

60

65 70 4

75

80 1 2 85 1

90 2 95 2

100 1 105 1

Canzon à 8 (Choir II, basso)

110

