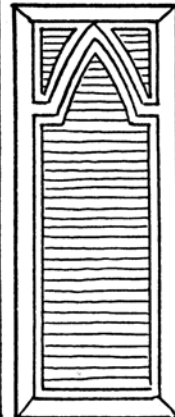
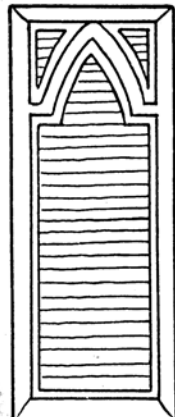
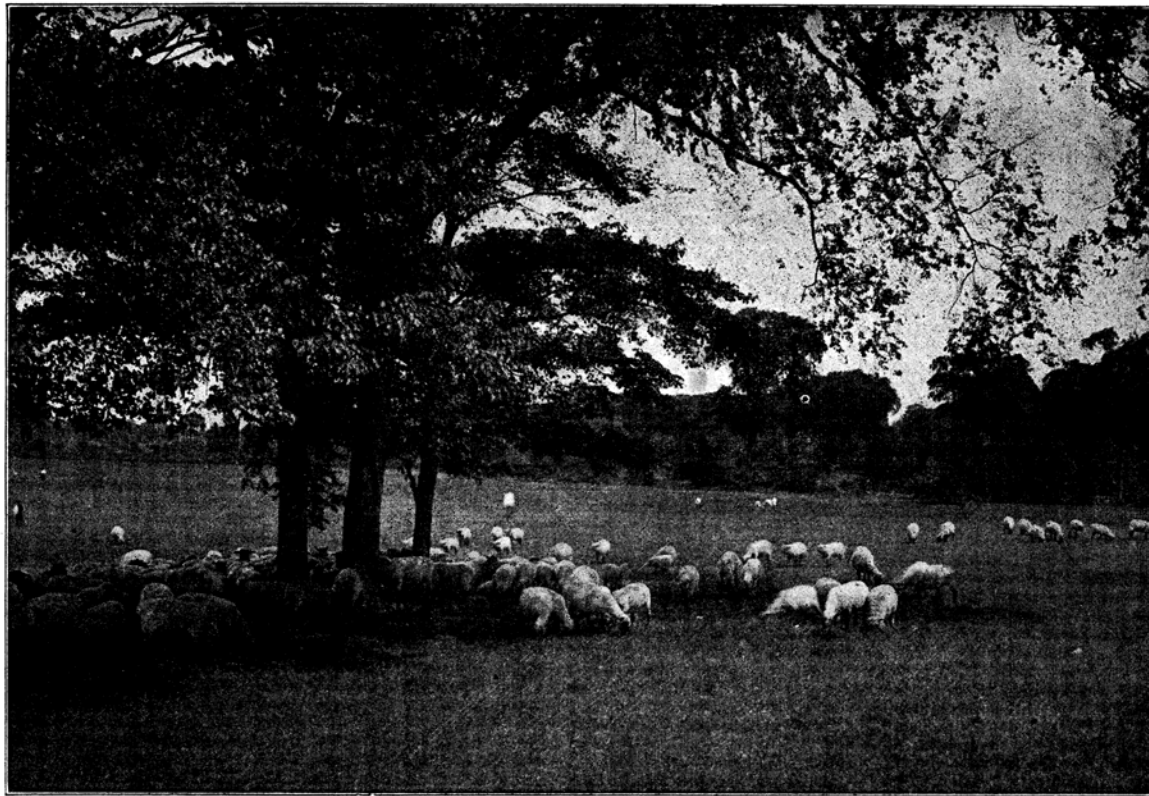


SABBATH ECHOES



SOLOS, DUETS AND QUARTETS

SOLOS

- 1057—Beyond the Smiling and the Weeping.....Jerome .50
 1032—Just Beyond the Vale of Years.....Bishop .50
 989—Lead Kindly Light (Medium Voice).....Jerome .50
 995—Nearer My God to Thee (Medium Voice).....Jerome .50
 996—Rock of Ages (Medium Voice).....Jerome .50
 1027—Some Other Day.....Fearis .50
 1056—The Gates of Paradise.....Root .50
 988—There is a Green Hill Far Away (Medium Voice).....Jerome .50

DUETS

- 658—Come Holy Spirit (Sop. or Tenor and Alto).....Jerome .40
 937—Gently Lead Us (For Sop. and Ten.).....Jerome .50
 769—God is Love (Sop. and Tenor).....Jerome .40
 725—King of Love My Shepherd Is (Sop. and Tenor).....Jerome .40
 971—Light at Evening Time (For Sop. or Ten. and Alto).....Jerome .50
 724—Sun of My Soul (Sop. or Tenor and Alto.).....Jerome .40
 668—Thy Will be Done (Sop. and Tenor).....Jerome .40
 956—Springtime of the Soul (Sop. or Tenor and Alto).....Hart .50

QUARTETS

- 673—Come Unto Me.....Jerome .40
 672—To the Haven of Thy Breast.....Jerome .40

CHICAGO MCKINLEY MUSIC CO. NEW YORK

GENTLY LEAD US

DUET SOPRANO & TENOR

FREDERICK JEROME

A piano introduction consisting of two staves. The right hand plays a melody of eighth and quarter notes, while the left hand provides a harmonic accompaniment with chords and moving lines.

SOPRANO

Gen - tly, Lord, oh gen - tly lead us, Through this lone-ly vale of

TENOR

The vocal staves for Soprano and Tenor are shown with their respective lyrics. The piano accompaniment continues with a steady eighth-note pattern in the right hand and chords in the left hand.

tears, Through the changes yet de - creed us,

The vocal staves for Soprano and Tenor are shown with their respective lyrics. The piano accompaniment continues with a steady eighth-note pattern in the right hand and chords in the left hand.

Till our last great change ap - pears. When temp-

When temp-ta-tion's darts as

ta - tion's darts as sail us, When in devious paths we stray

sail us, When in devious paths we stray

Let Thy goodness never fail us, Lead us in The per-fect way. **Fine**

Fine

TENOR SOLO

p

In the hour of pain and an - guish, In the hour when

p

Detailed description: This system contains the first three measures of the piece. The top staff is a tenor line starting with a treble clef, a key signature of one sharp (F#), and a dynamic marking of *p*. The lyrics are written below the tenor staff. The piano accompaniment consists of a grand staff with a treble and bass clef. The right hand plays a rhythmic accompaniment of eighth notes, while the left hand plays a simple bass line with half notes and rests.

death draws near, Suf - fer not our hearts to lan - guish

Detailed description: This system contains the next three measures. The tenor staff continues the melody, and the piano accompaniment maintains the same rhythmic pattern. The lyrics are written below the tenor staff.

Suf - fer not our souls to fear.

Detailed description: This system contains the final two measures of the piece. The tenor staff concludes the melody with a final note and a fermata. The piano accompaniment also concludes with a final chord and a fermata. The lyrics are written below the tenor staff.

SOP. SOLO

mf

And when mor - tal life is end - ed, Bid us in Thine arms to

cresc. *f*

rest, Till by an - - gel bands at - ten - ded, by

cresc. *f*

ff

an - - gel bands at - ten - ded, Till by an - - gel bands at

ff

> *>* *>* *>* *>* *D.S.* *§*

ten - ded, We a - wake a - mong the blest.

D.S. *§*

Late Popular Successes



Popular Waltz Ballad

IF YOU'VE NEVER BEEN IN DREAMLAND
YOU'VE NEVER BEEN IN LOVE. MAY HILL.

By Homer Graham
 Chorus by Marvin Lee
 Lyrics by May Hill

If you've nev - er been in Dream - land, you've nev - er been in love. True
 love, it seems, be - gins in dream - land, of those you're think - ing of. 'Tis
 on - ly lov - ing sweet - heart - That view those realms a - bove. If you've nev - er

Copyright MCMXVI by Frank K. Root & Co.
 British Copyright Secured

Down the Sunset Trail to
AVALON
I'll Travel On To You! Music by E. CLINTON KEITHLEY

Lyric by JACK FROST.

Down the Sun-set Trail to Av-a-lon I'll trav-el on to Av-a-lon, By the
 morn-ing brooks that bab-ble on I'll come back to keep my prom-ise true. Oh!

Copyright MCMXVI by Frank K. Root & Co.
 British Copyright Secured



Popular Song Success

THE HOUR OF MEMORY
 (Humoresque Song)

English Lyric by J. WILL CALLAHAN. A. DVOŘÁK.
 Adapted by Henry S. Sawyer.

Now the peace-ful day is end - ing, Shine and shad - ow soft - ly blend - ing
 In a fad - ing glow of crim-son hue; With the shades of night de-scend-ing

Copyright MCMXVI by Frank K. Root & Co.
 British Copyright Secured

SWEET COOKIE MINE. Music by CLARENCE W. JONES

Lyric by JACK FROST.

When I look in your eyes, just what I'm think - ing of, Sweet Cook - ie, Sweet Cook - ie, if
 you were on - ly wise you'd know the sweet I love, Sweet Cook - ie Mine. Some times I feel I could steal as I
 did long be - fore, When I stole Mah cookies from behind the pan - try door, And some day soon I feel that I'll get just one

Copyright MCMXVI by Frank K. Root & Co.
 British Copyright Secured

PARADISE BLUES
 Oh! Pretty Papa! Oh! Pretty Papa!

Words by WALTER HIRSCH. Music by SPENCER WILLIAMS

Non - ey, don't play me no Op - tra, Play me some blue mel - o -
 dy. I don't care noth - in' 'bout Car - men

Copyright MCMXVI by Frank K. Root & Co.
 British Copyright Secured.

I AIN'T GOT NOBODY
 (And Nobody Cares for Me)

Lyric by JACK FROST

I aint got no - bo - dy. And no bo - dy
 cares for me. That's why. I'm sad and

Copyright MCMXVI by Frank K. Root & Co.
 British Copyright Secured

LET'S GO BACK TO
DREAMY LOTUS LAND Music by PAUL BIESE and P. HENRI KLUCKMANN

Lyric by JACK FROST

We, please come with me And let's go back to dream - y
 Lo-tus Land. There, 'mid flow-ers fair I swear to love you,
 love you 'neath the magic moon a - bove you Wee. I love but thee, Just wait and

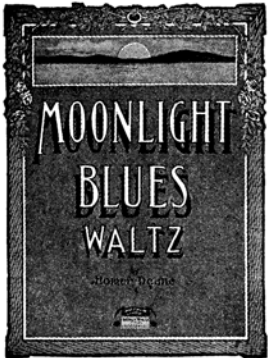
Copyright MCMXVI by Frank K. Root & Co.
 British Copyright Secured

I LOVE THAT LOVABLE MELODY JAMES WYNN

CHORUS

Play for me that lov - a - ble mel - o - dy, love - me -
 hear it played in the night, how it seems to typ - e me - use me! Cause, giv - ing full of lov - a - ble har -
 - mo - ny. Now don't you start to tease, fill my heart with ease, De - re - me - sol - la - re - de,

Copyright MCMXVI by Frank K. Root & Co.
 British Copyright Secured



The Great Original Blue Waltz

MOONLIGHT BLUES
 WALTZ. HOMER DRABE

Copyright MCMXVI by Frank K. Root & Co.
 British Copyright Secured

MY FOX - TROT GIRL
 Song or Fox-Trot.

Lyric by JACK FROST
 CHORUS

My Fox - Trot Girl (let's tod - die) My
 Fox - Trot Girl (come wad - die) When those cel - los play

Copyright MCMXVI by Frank K. Root & Co.
 British Copyright Secured



Greatest Song Hit of the Season

Complete Copies on Sale Wherever Music is Sold!

All Published and Copyrighted by

McKinley Music Company

CHICAGO
 NEW YORK