

TWO PRELUDES

(O lux beata trinitas)
for Trumpet & Organ

Score (05':17")

Jan Pieterszoon Sweelinck (1562 - 1621)
Arr. Michel Rondeau

1. Moderato ♩ = 80

Trumpet in C

Organ

C Tpt.

Org.

C Tpt.

Org.

TWO PRELUDES - Sweelinck - Score

2
17

C Tpt.

Org.

22

C Tpt.

Org.

27

C Tpt.

Org.

32

C Tpt.

Org.

TWO PRELUDES - Sweelinck - Score

37

C Tpt.

Org.

42

C Tpt.

Org.

47

C Tpt.

Org.

51 **2. Moderato**

C Tpt.

Org.

TWO PRELUDES - Sweelinck - Score

4
58

C Tpt.

Org.

63

C Tpt.

Org.

68

C Tpt.

Org.

73

C Tpt.

Org.

TWO PRELUDES - Sweelinck - Score

78

C Tpt.

Org.

83

C Tpt.

Org.

88

C Tpt.

Org.

93

C Tpt.

Org.

TWO PRELUDES - Sweelinck - Score

6
98

C Tpt.

98

Org.

Detailed description: This system covers measures 6 to 98. The C Tpt. part is a single melodic line with five whole notes. The Organ part consists of two staves. The upper staff has a treble clef and contains a series of eighth and sixteenth notes, some beamed together, and some notes with slurs. The lower staff has a bass clef and contains chords and single notes, including a key signature change to one sharp (F#) in the third measure.

103

C Tpt.

103

Org.

Detailed description: This system covers measures 103 to 108. The C Tpt. part has three notes, with a long slur extending from the first note to the end of the system. The Organ part consists of two staves. The upper staff has a treble clef and contains a series of eighth and sixteenth notes, some beamed together, and some notes with slurs. The lower staff has a bass clef and contains chords and single notes, including a key signature change to one sharp (F#) in the third measure.

TWO PRELUDES

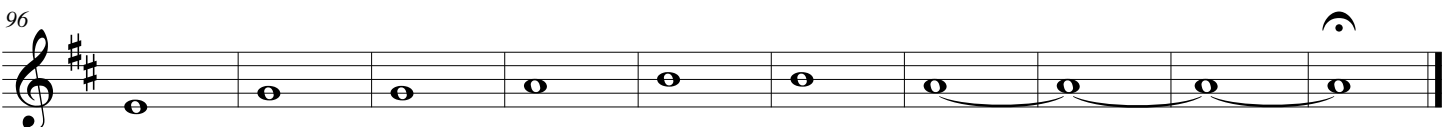
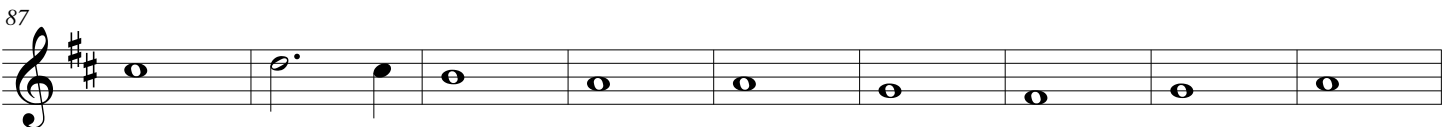
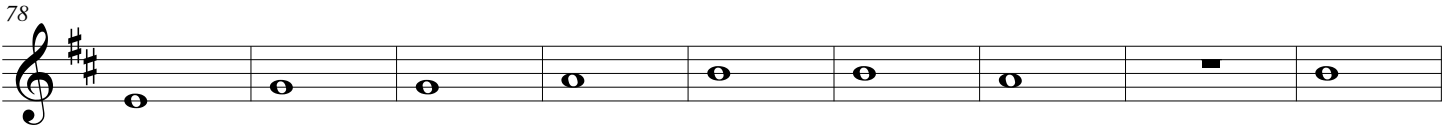
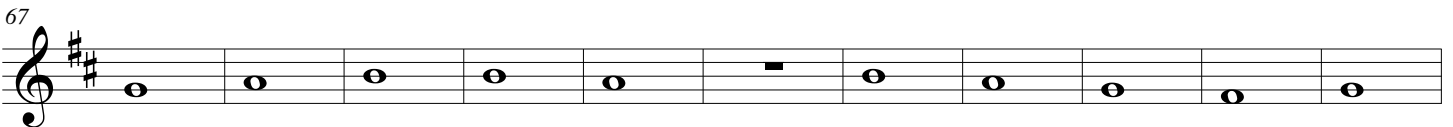
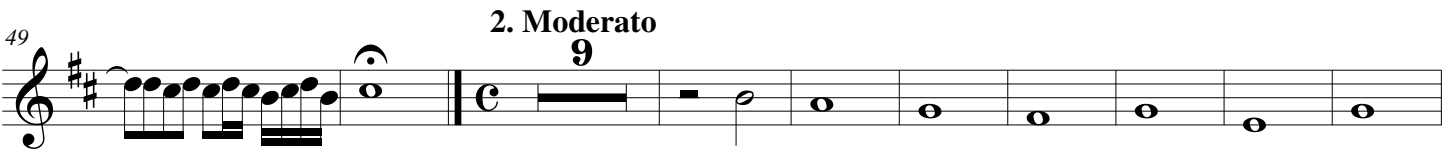
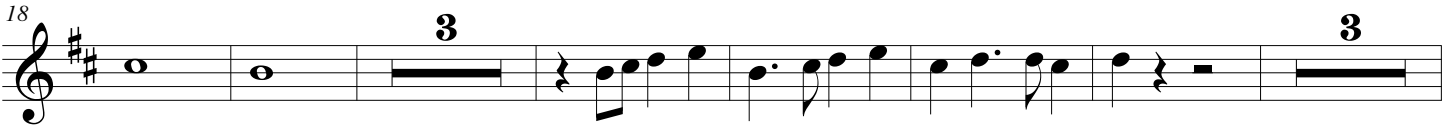
(O lux beata trinitas)
for Trumpet & Organ

Trumpet in Bb

Jan Pieterszoon Sweelinck (1562 - 1621)

Arr. Michel Rondeau

1. Moderato ♩ = 80



TWO PRELUDES

(O lux beata trinitas)
for Trumpet & Organ

Organ

Jan Pieterszoon Sweelinck (1562 - 1621)
Arr. Michel Rondeau

Trumpet in C

1. Moderato ♩ = 80

C Tpt.

Org.

C Tpt.

Org.

TWO PRELUDES - Sweelinck - Organ

2
17

C Tpt.

Org.

22

C Tpt.

Org.

27

C Tpt.

Org.

32

C Tpt.

Org.

TWO PRELUDES - Sweelinck - Organ

C Tpt. 

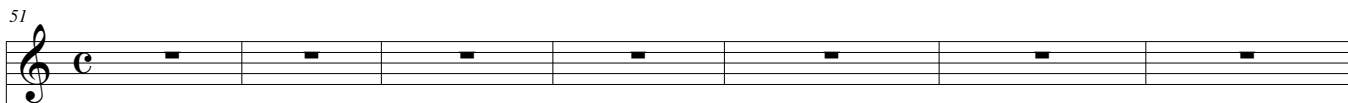
Org. 

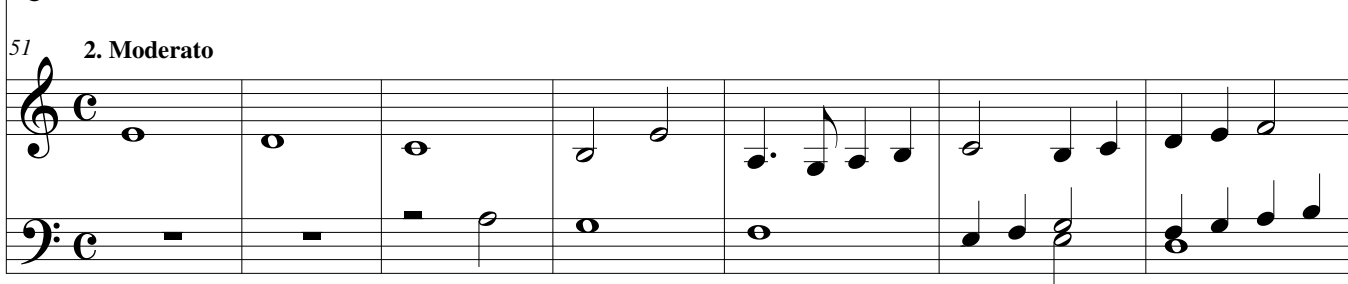
C Tpt. 

Org. 

C Tpt. 

Org. 

C Tpt. 

Org. **2. Moderato** 

TWO PRELUDES - Sweelinck - Organ

4
58

C Tpt.

Org.

63

C Tpt.

Org.

68

C Tpt.

Org.

73

C Tpt.

Org.

TWO PRELUDES - Sweelinck - Organ

78

C Tpt.

78

Org.

Detailed description: This system covers measures 78 to 82. The C Tpt. part consists of five measures of whole notes: G4, A4, B4, C5, and B4. The Organ part features a complex texture with sixteenth-note runs in the right hand and a bass line with chords and single notes in the left hand.

83

C Tpt.

83

Org.

Detailed description: This system covers measures 83 to 87. The C Tpt. part has five measures: G4, A4, a whole rest, B4, and A4. The Organ part continues with intricate sixteenth-note patterns in both hands, including a prominent melodic line in the right hand.

88

C Tpt.

88

Org.

Detailed description: This system covers measures 88 to 92. The C Tpt. part has five measures: G4, A4, B4, C5, and B4. The Organ part features a more active bass line with frequent sixteenth-note runs and chords.

93

C Tpt.

93

Org.

Detailed description: This system covers measures 93 to 97. The C Tpt. part has five measures: G4, A4, B4, C5, and B4. The Organ part concludes with a final melodic phrase in the right hand and a sustained bass line in the left hand.

TWO PRELUDES - Sweelinck - Organ

6
98

C Tpt.

Org.

Detailed description: This system covers measures 6 to 98. The C Tpt. part is a single staff with a treble clef, containing five measures of whole notes. The Organ part is a two-staff system with a treble and bass clef. It contains five measures of music, including eighth and sixteenth notes, rests, and chords. A key signature change to one sharp (F#) is indicated in the third measure of the organ part.

103

C Tpt.

Org.

Detailed description: This system covers measures 103 to 108. The C Tpt. part is a single staff with a treble clef, containing three measures of whole notes. The Organ part is a two-staff system with a treble and bass clef. It contains three measures of music, including eighth notes, sixteenth notes, and chords. The system concludes with a double bar line.