

LARGO ASSAI

HAYDN.

Arreglado para guitarra,

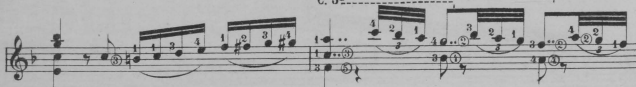
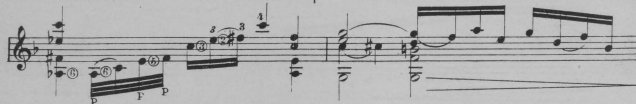
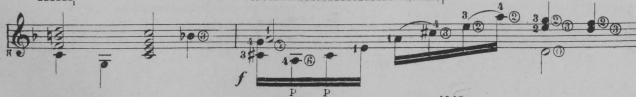
Francisco Tárrega.

G. 4^a C. 8^a C. 4^a C. 8^a
mezza voce. *ten.* *ten.*
 C. 4^a C. 4^a
cres.
 C. 8^a C. 2^a
 C. 4^a C. 8^a
pp
 C. 5^a
p *poco f*
 C. 5^a C. 5^a C. 10^a C. 5^a C. 8^a

40.59.

C. 8^aC. 9^a

8

C. 9^aC. 5^a*mezza voce.*C. 5^aC. 8^aC. 6^aC. 5^aC. 4^aC. 8^aC. 2^a

. 1049.

