

RIGAUDON in A MINOR (5)

(from: Overture - Suite in A minor BWV 55:a1)

Score (00':57'')

for Trumpet & Organ

Georg Philipp Telemann (1681 - 1767)

Arr. Michel Rondeau

Presto $\text{♩} = 120$

Trumpet in C

Organ

This system contains the first four measures of the piece. The Trumpet in C part (top staff) begins with a quarter note G4, followed by quarter notes A4, B4, and C5, then a half note B4, and finally a quarter note G4. The Organ part (bottom two staves) provides a harmonic accompaniment with chords and a bass line. The key signature has one sharp (F#) and the time signature is common time (C).

C Tpt.

Org.

This system contains measures 5 through 9. The C Trumpet part (top staff) has a whole rest in measure 5, followed by quarter notes G4, A4, and B4, and a dotted half note G4. The Organ part (bottom two staves) continues the accompaniment. A repeat sign is present at the end of measure 9.

C Tpt.

Org.

This system contains measures 10 through 14. The C Trumpet part (top staff) has quarter notes G4, A4, and B4, followed by a dotted half note G4 with a trill (tr) above it. The Organ part (bottom two staves) continues the accompaniment. A trill (tr) is also indicated above the organ's treble staff in measure 14.

RIGAUDON in A MINOR (5) - Telemann - Score

C Tpt.

Org.

15

C Tpt.

Org.

20

C Tpt.

Org.

25

1. 2.

RIGAUDON in A MINOR (5)

(from: Overture - Suite in A minor TWV 55:a1)

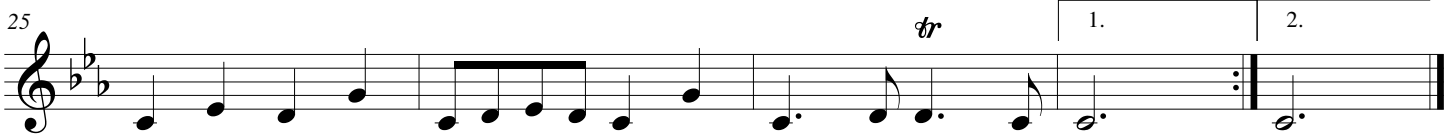
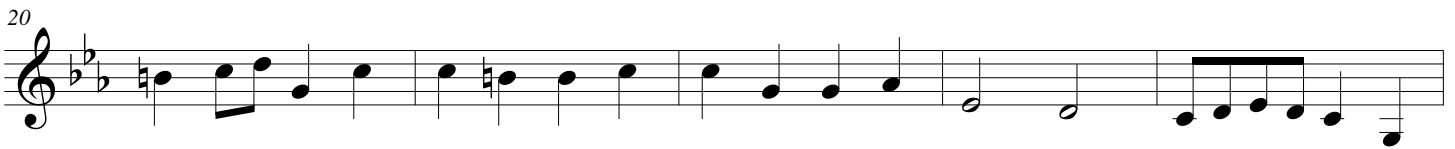
for Trumpet & Organ

Trumpet in A

Georg Philipp Telemann (1681 - 1767)

Arr. Michel Rondeau

Presto $\text{♩} = 120$



RIGAUDON in A MINOR (5)

(from: Overture - Suite in A minor TWV 55:a1)

for Trumpet & Organ

Trumpet in D

Georg Philipp Telemann (1681 - 1767)

Arr. Michel Rondeau

Presto $\text{♩} = 120$



RIGAUDON in A MINOR (5)

(from: Overture - Suite in A minor TWV 55:a1)
for Trumpet & Organ

Organ

Georg Philipp Telemann (1681 - 1767)

Arr. Michel Rondeau

Trumpet in C

Presto ♩ = 120

Organ

Detailed description: This system contains the first four measures of the piece. The Trumpet in C part is in the treble clef with a common time signature. The Organ part consists of two staves, treble and bass clef. The tempo is marked 'Presto' with a quarter note equal to 120 beats per minute. The key signature has one sharp (F#).

C Tpt.

Org.

Detailed description: This system contains measures 5 through 9. The C Trumpet part has a measure rest for the first measure, then enters in measure 5. The Organ part continues with accompaniment. A repeat sign is present at the end of measure 8.

C Tpt.

Org.

Detailed description: This system contains measures 10 through 14. The C Trumpet part has a measure rest for the first measure, then enters in measure 10 with a trill (tr) in measure 11. The Organ part continues with accompaniment, also featuring a trill (tr) in measure 11.

RIGAUDON in A MINOR (5) - Telemann - Organ

C Tpt.

Org.

C Tpt.

Org.

C Tpt.

Org.