

MISSAE JACOBI OBREHT.



T
II.

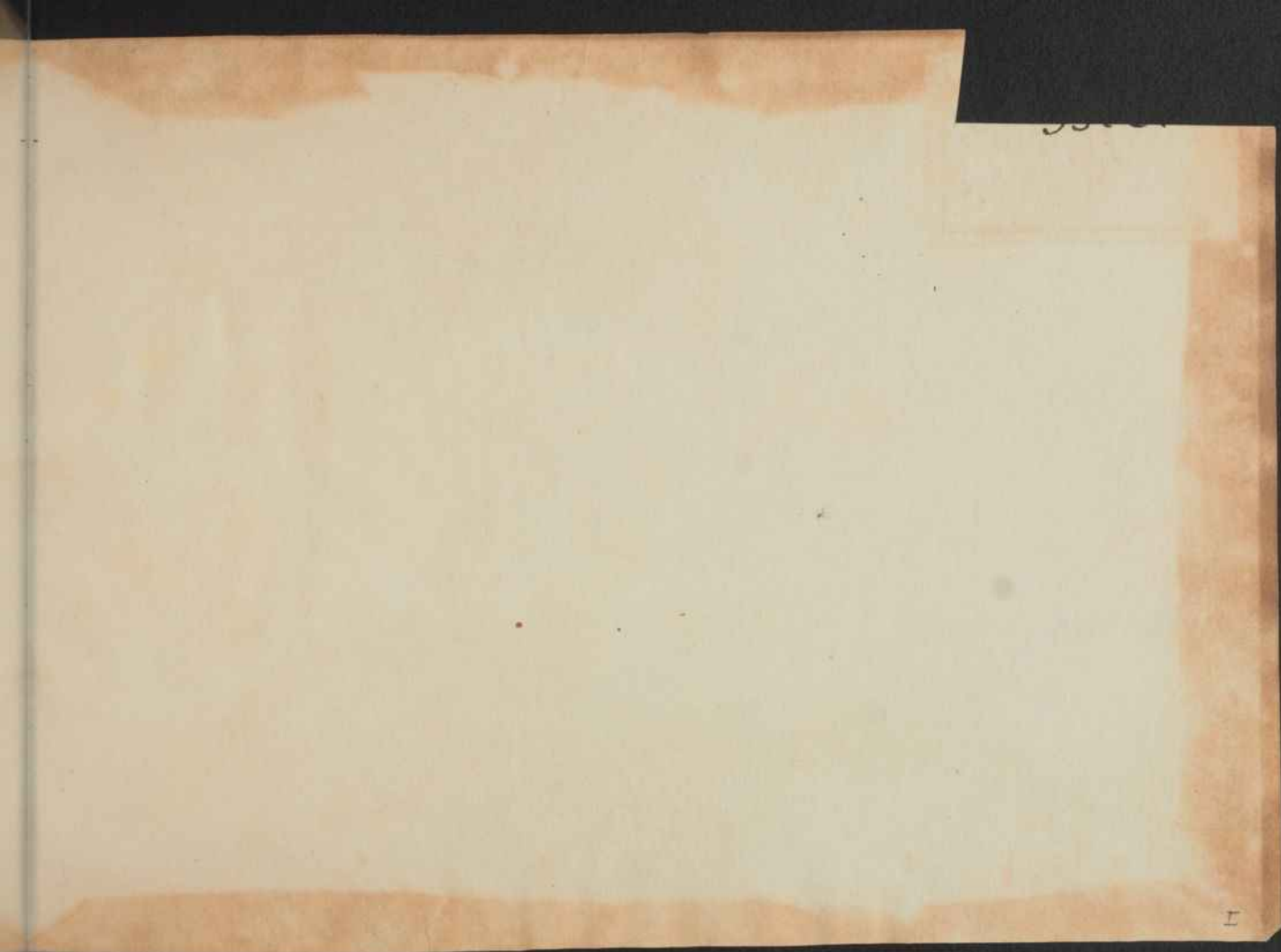
R1XVI Pedrucci / 13

sa. 77. C. 13.

1137

1 + 14 + 1 3/4 -

28. 1. 1966.





240

Yrie benedemande
 Et in terra par
 Qui tollis
 qui tollis
 Cum sancto spi

*Christe.
 Tacet*
*Primo crescat in quintuplo
 Secundo in quadruplo
 Tertio in tripulum*

*Christe.
 Tacet*

Violone

241

Et in terra par
 Qui tollis peccata mundi
 Cum sancto spi

*Christe.
 Tacet*

Direm Et in unus dñm Et in carnatus est
 Et in spm sanctū dñm omnipotētes
 Et in carnatus est
 Et in spm sanctū

242

Resoluto

BIBLIOTHECA PALAT.
 VIENNEENSIS.

243

Sanctus

Osanna: primo crescat in secundo ut

Benedictus

Facet

duplus
facet

Resoluto

Sanctus sanctus

Facet

Osanna

Benedictus

Facet

Osanna

ut supra

244

Agnus dei

Resoluto

Agnus dei q tollis

peccata mundi miserere nobis Agnus dei: secundus
et tertium



Co Brecomum
vrie eley son
tr. briste.
Facet

245

lycie eley son D;

240

Et in terra pax Creat in triplum Qui

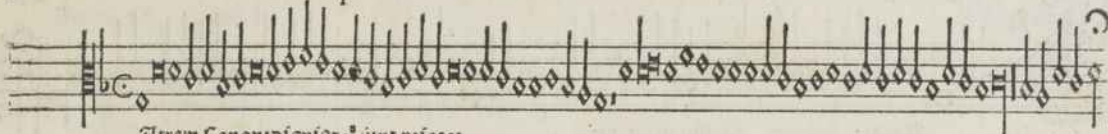
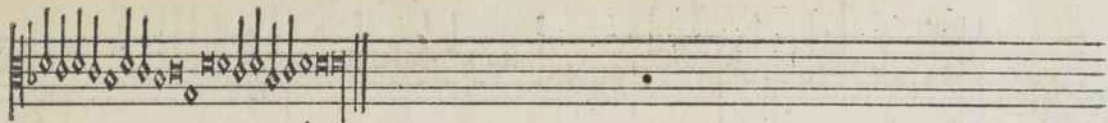
240

Andolucio

Et in terra pax Qui tollis Qui tollis

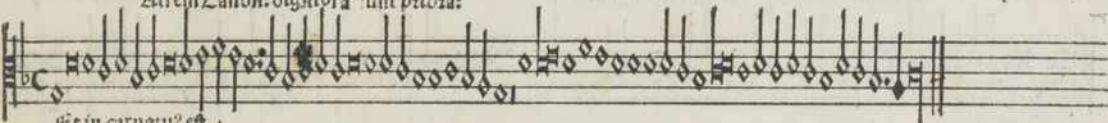
quoniam En sol' altissim'

Cum saucto

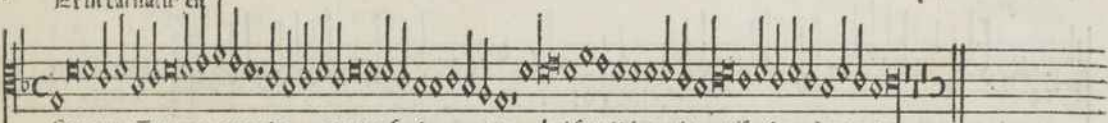


247

Etrem Lanon: digniora sunt priora:

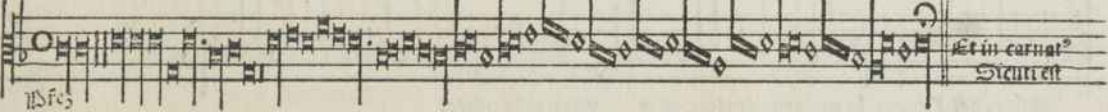


Et in carnatu est

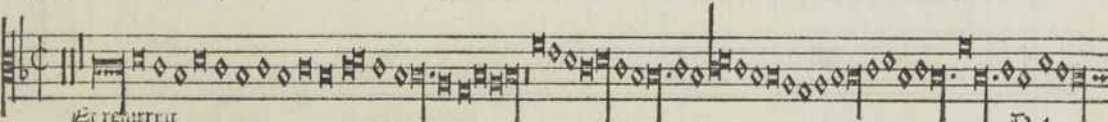


Lanon: Turenor caneriza r pantifasim canta | cui fureis in capite antifraxando repetet:

Violino



Et in carnat.
Sicut est

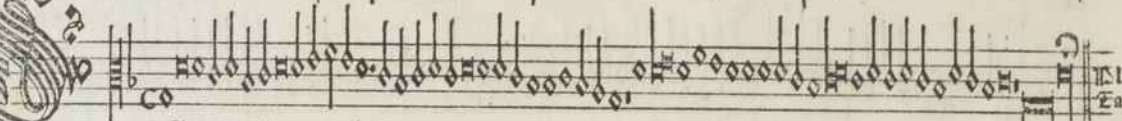
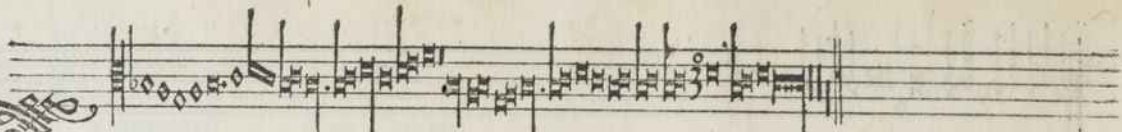


Et resurrexit

B 4

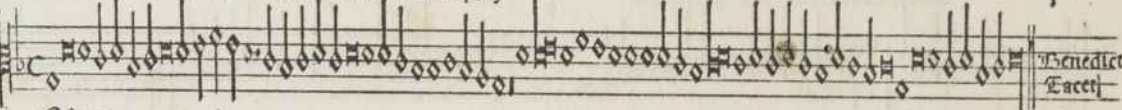
Clarinetto

248



Sanctus sanctus Crescat in dupluz

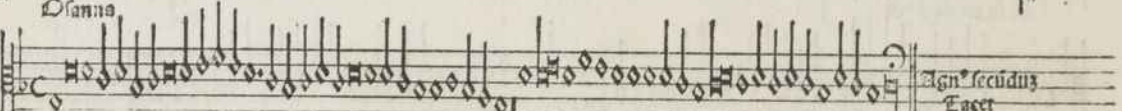
Pleni
Facet



Benedictus
Facet

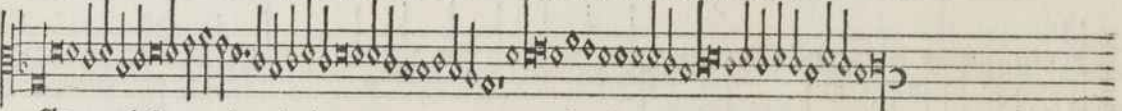
Osanna

249

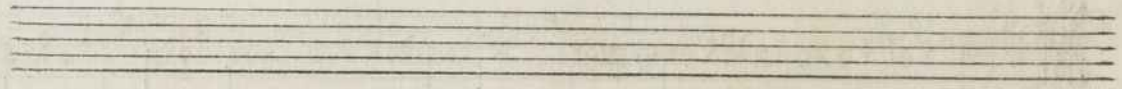


Agnus secundus
Facet

Agnus dei canon Qui se exaltat humiliabitur: et qui se humiliat exaltabitur:



Agnus dei Canon: in partipathypaton arces vertatur in pisces:



Agnus dei pmum Agnus dei

tercium

250

yrre fortuna desperata: clep

son h yrre

briffe.
Facet

251

Et in ira pax Canon: canctiza: In medio cōsistit virtus. Clere solū

Resoluto

Et in terra pax
Qui tollis peccata

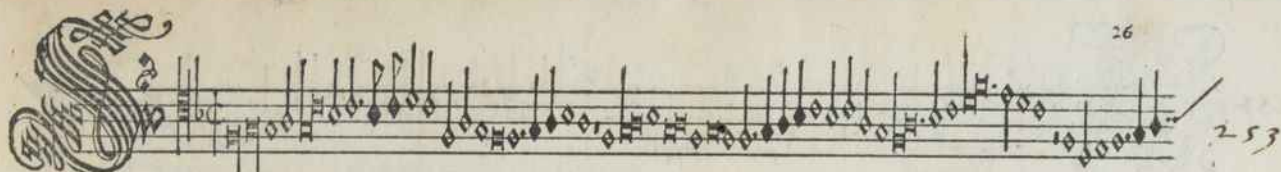
252

Direm omnipotentem
Et in carnatus est

In medio consistit virtus

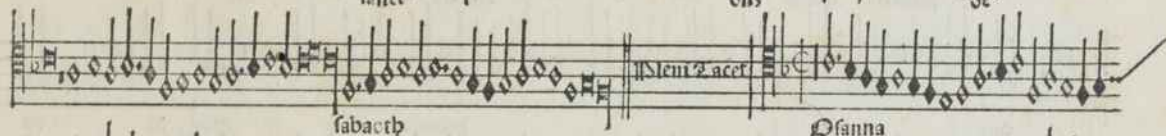
Resoluto

Patrem omnipotentem
Et in ca. natum est:

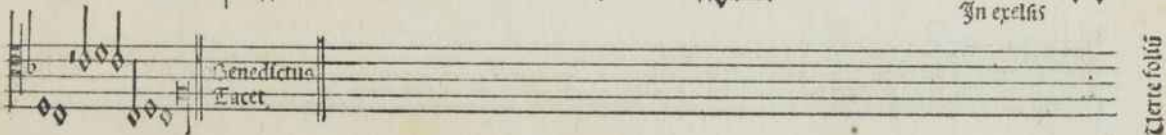


Sanctus

sanctus



Osanna



Certe foliū

254

Deus dei

qui tollis

peccata mundi

Detailed description: This is the first musical staff on the page. It begins with a large, ornate initial letter 'D' in black ink, which is decorated with intricate scrollwork and floral patterns. To the left of the staff, the number '254' is written in a cursive hand. The staff itself contains musical notation with a treble clef and a common time signature (C). The lyrics 'Deus dei' are written below the first few notes. The staff continues with more notes and rests, with the words 'qui tollis' and 'peccata mundi' appearing further along.

Agnus secūndus
Facet

miserere nobis

Agnus dei

Detailed description: This is the second musical staff. It starts with a treble clef and a common time signature. The lyrics 'Agnus secūndus' and 'Facet' are written below the first few notes. The staff continues with musical notation and rests, with the words 'miserere nobis' and 'Agnus dei' appearing further along.

qui tollis

peccata mundi do

Detailed description: This is the third musical staff. It starts with a treble clef and a common time signature. The lyrics 'qui tollis' and 'peccata mundi do' are written below the first few notes. The staff continues with musical notation and rests.

na no bis

pacem

Detailed description: This is the fourth musical staff. It starts with a treble clef and a common time signature. The lyrics 'na no bis' and 'pacem' are written below the first few notes. The staff continues with musical notation and rests.

na no bis

pacem

Detailed description: This is the fifth musical staff. It starts with a treble clef and a common time signature. The lyrics 'na no bis' and 'pacem' are written below the first few notes. The staff continues with musical notation and rests.

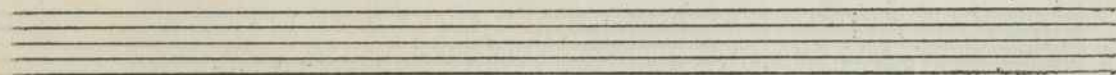
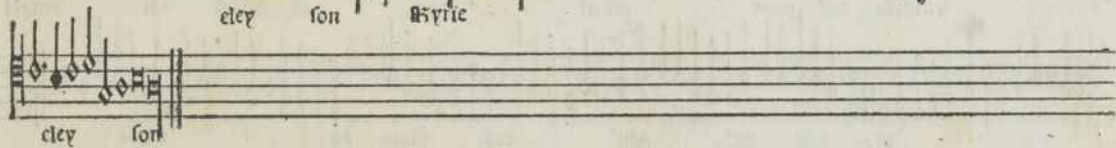
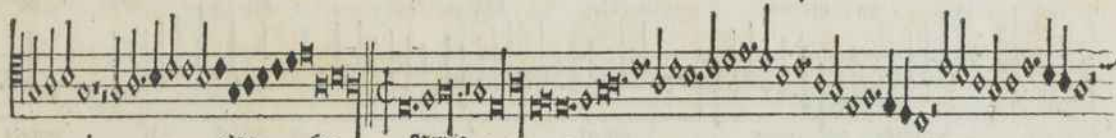
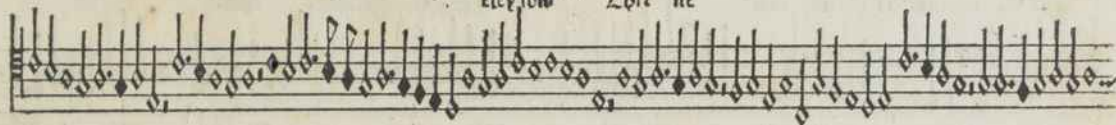
Detailed description: This is the sixth musical staff, which is empty and contains no musical notation or text.

Detailed description: This is the seventh musical staff, which is empty and contains no musical notation or text.

Detailed description: This is the eighth musical staff, which is empty and contains no musical notation or text.

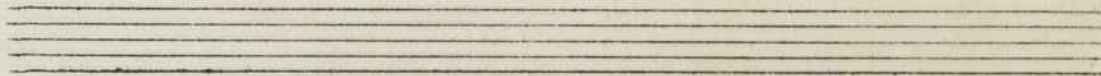


2*





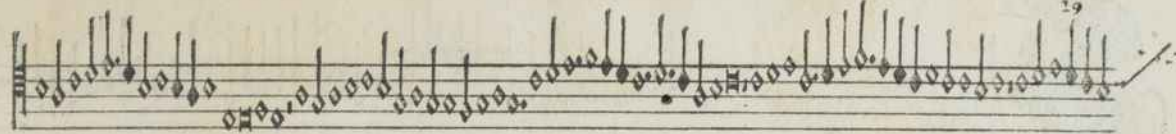
Et in terra pax ho- minib' bonę voluntatis lauda- m' te bñdici-
 m' te adoram' te glori- cam' te gra- tias agim' tibi
 pp magnam glo- riam tuā am- dñe de-
 rex ce- lestis de- pater om- ni- po- tens dñe fi- li- vnigē-
 te dñe de- agn' dei filius pa- tris



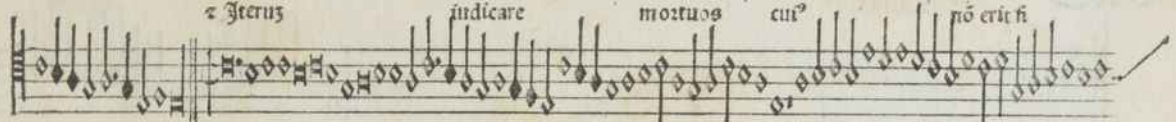
Qui tollis peccata mundi misere nobis qui tollis peccata
 mundi suscipe deprecationes nostras qui
 sedes ad dexteram patris miserere nobis qui tu solus sanctus
 tu solus dominus tu solus altissimus
 Iesu christe cum sancto spiritu in gloria deipatris amen



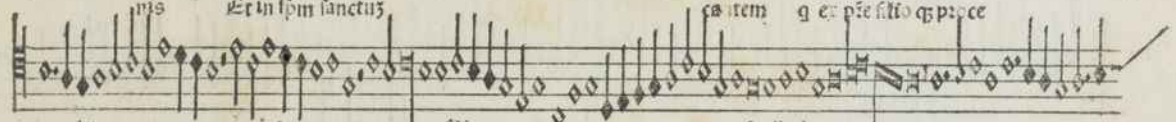
Atre omnipotere, factoré celi omnium z invisibilium filium z ex pre
 ante oia secula deum de do genu
 ru a no factum p quz oia
 9. pp descendit z in carnat
 ex maia z homo factus est Luceifixus sub pi la po
 passus tercia die z ascendit i celis sedet



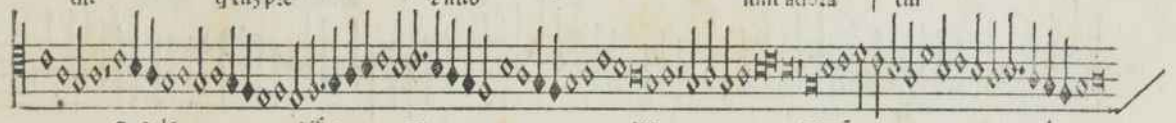
z iterus iudicare mortuos cui⁹ nō erit fi



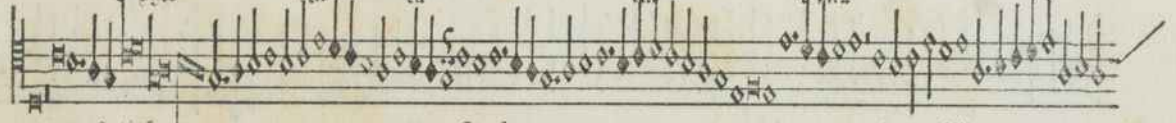
nis Et in spm sanctus ca item q ex pte filio q ppece



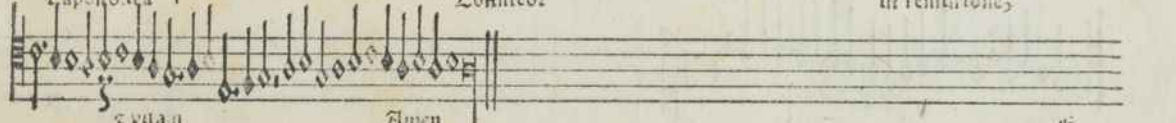
dit q euz pie z filio siml adora tur



q pto tifi ca tur q vna



z apostolica Confiteor in remissiones



z vita Amen



Auctus

fabat orbis

Et facti sunt

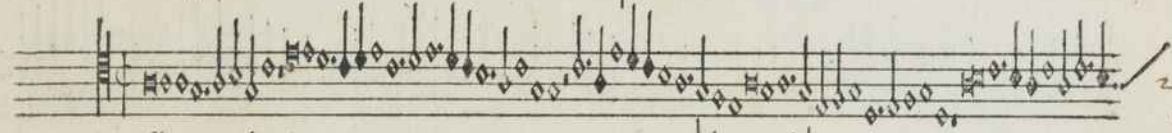
The image shows a page of musical notation with six staves. The first staff begins with a large, decorative initial 'S' that is partially obscured by the page number '258'. The word 'Auctus' is written below the first staff. The second staff continues the musical line. The third staff has the words 'fabat orbis' written below it. The fourth staff has the words 'Et facti sunt' written below it. The fifth and sixth staves continue the musical notation. The notation consists of rhythmic patterns of notes and rests, typical of a lute tablature or a similar early printed musical notation system.



Stanna

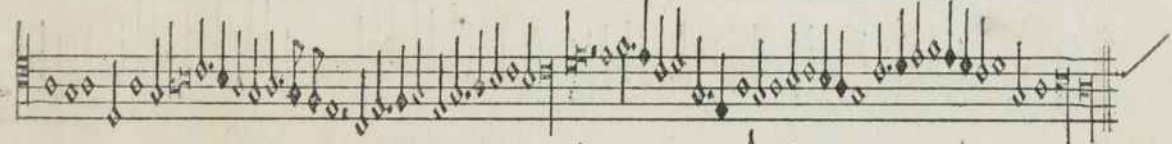
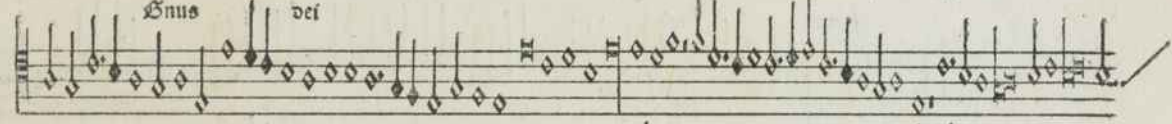


Benedictus sup Crucifix



259

Enus dei



Agnus dei



F. 1

Clare solid

A handwritten musical score consisting of six staves. The notation is a form of early printed music, likely mensural notation, with square notes and stems. The first five staves contain a single melodic line. The fourth staff includes the Latin text "Agnus dei" written above the notes. The sixth staff begins with a double bar line and contains only a few notes, suggesting the end of a section or a specific instruction. The paper is aged and shows some staining.



Handwritten musical score for the first system, featuring a treble clef and a common time signature. The melody is written on a five-line staff with square notes. The lyrics are: *Yrie* *eley son* *Chrite*. A second staff below contains a bass line with square notes. The lyrics *eley son* *h'Yrie* are written below this staff. The system concludes with a double bar line and a handwritten number *260* to the right.



Handwritten musical score for the second system, featuring a treble clef and a common time signature. The melody is written on a five-line staff with square notes. The lyrics are: *in terra* *par hominib⁹*. A second staff below contains a bass line with square notes. The lyrics *terre solus* are written below this staff. The system concludes with a double bar line and a handwritten number *261* to the right.

terre solus

E₃

Dñe deus agnus dei

This staff contains musical notation with diamond-shaped notes and vertical stems, characteristic of early printed tablature. The notes are arranged in a sequence that corresponds to the lyrics 'Dñe deus agnus dei'. The notation is dense and fills most of the staff's vertical space.

This staff continues the musical notation from the first staff, featuring diamond-shaped notes and vertical stems. It appears to be a continuation of the same piece.

This staff continues the musical notation, showing a consistent pattern of diamond-shaped notes and vertical stems. The notation is dense and fills most of the staff's vertical space.

This staff continues the musical notation, showing a consistent pattern of diamond-shaped notes and vertical stems. The notation is dense and fills most of the staff's vertical space.

Cum sancto spū

This staff begins with the lyrics 'Cum sancto spū' and continues with musical notation using diamond-shaped notes and vertical stems. The notation is dense and fills most of the staff's vertical space.

Four empty musical staves are located at the bottom of the page, arranged in a single block. They are completely blank and do not contain any notation.



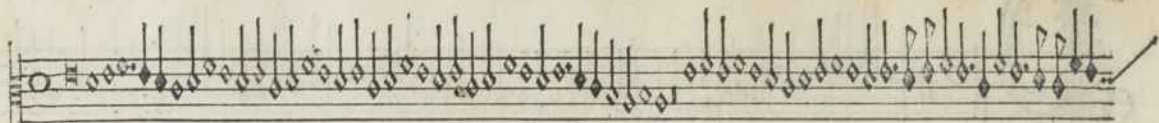
Et in omnipotentem

262

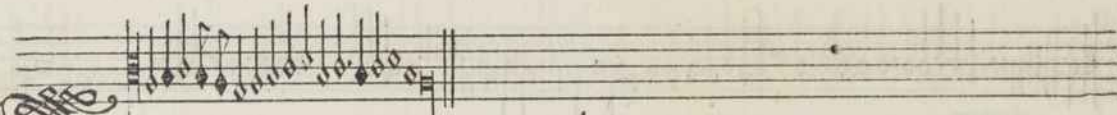
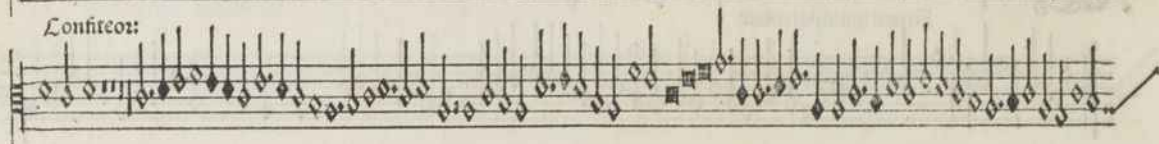
Genitum

Et in carnatus est

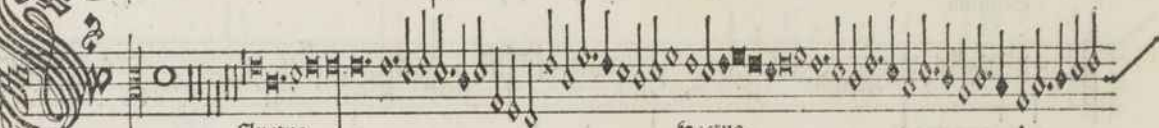
Qui tu pie
Tacet



Confiteor:

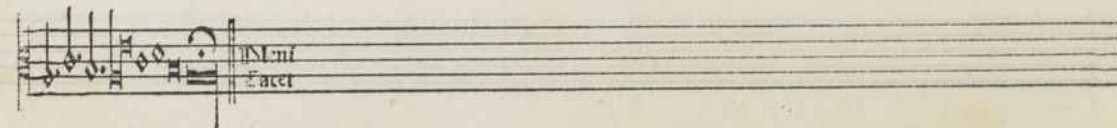
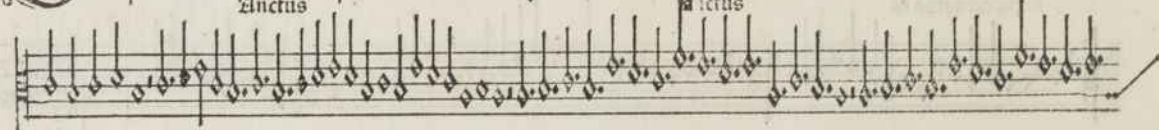


263



Inclus

sa ctus



Sancti
Facet

Handwritten musical score for a single melodic line, likely a lute or guitar. The notation includes rhythmic values, accidentals, and dynamic markings. The score is organized into five staves of music, with some sections marked with text.

The first staff begins with the marking *Dianna*. The second staff is marked *Benedictus*. The third staff contains the text *In nomine* and *Facet*, followed by the marking *Dianna*. The fourth and fifth staves continue the melodic line.

267



Agnus dei

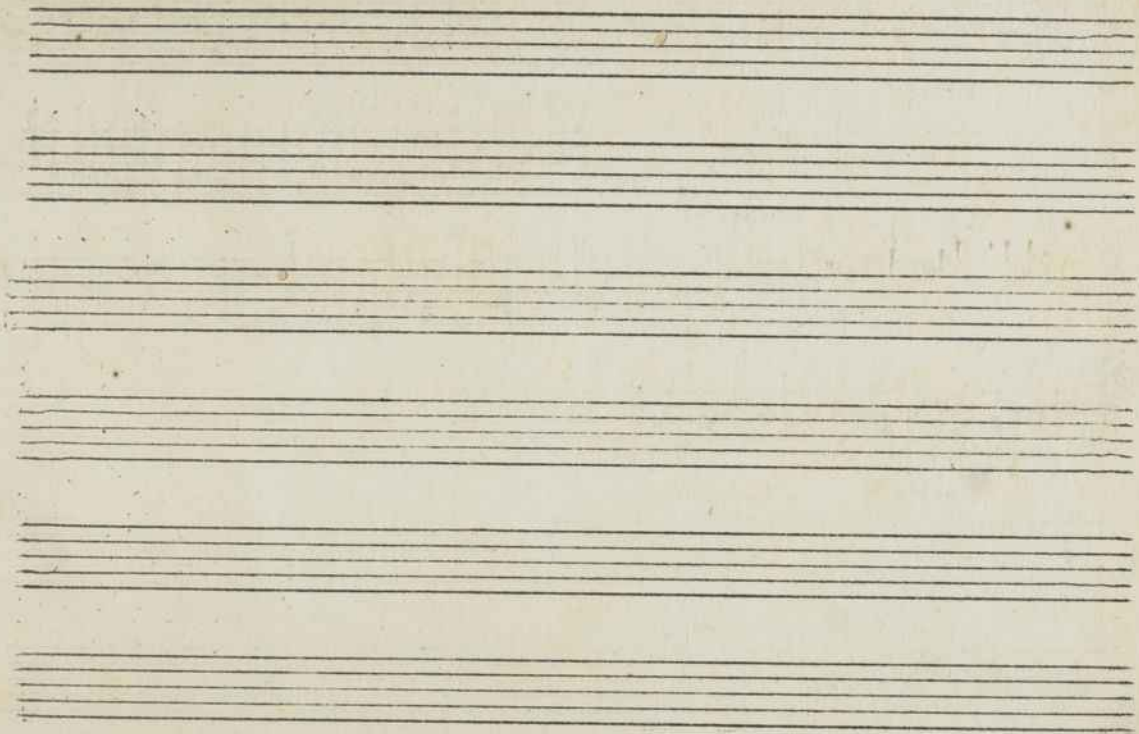
Agnus dei
Tacet

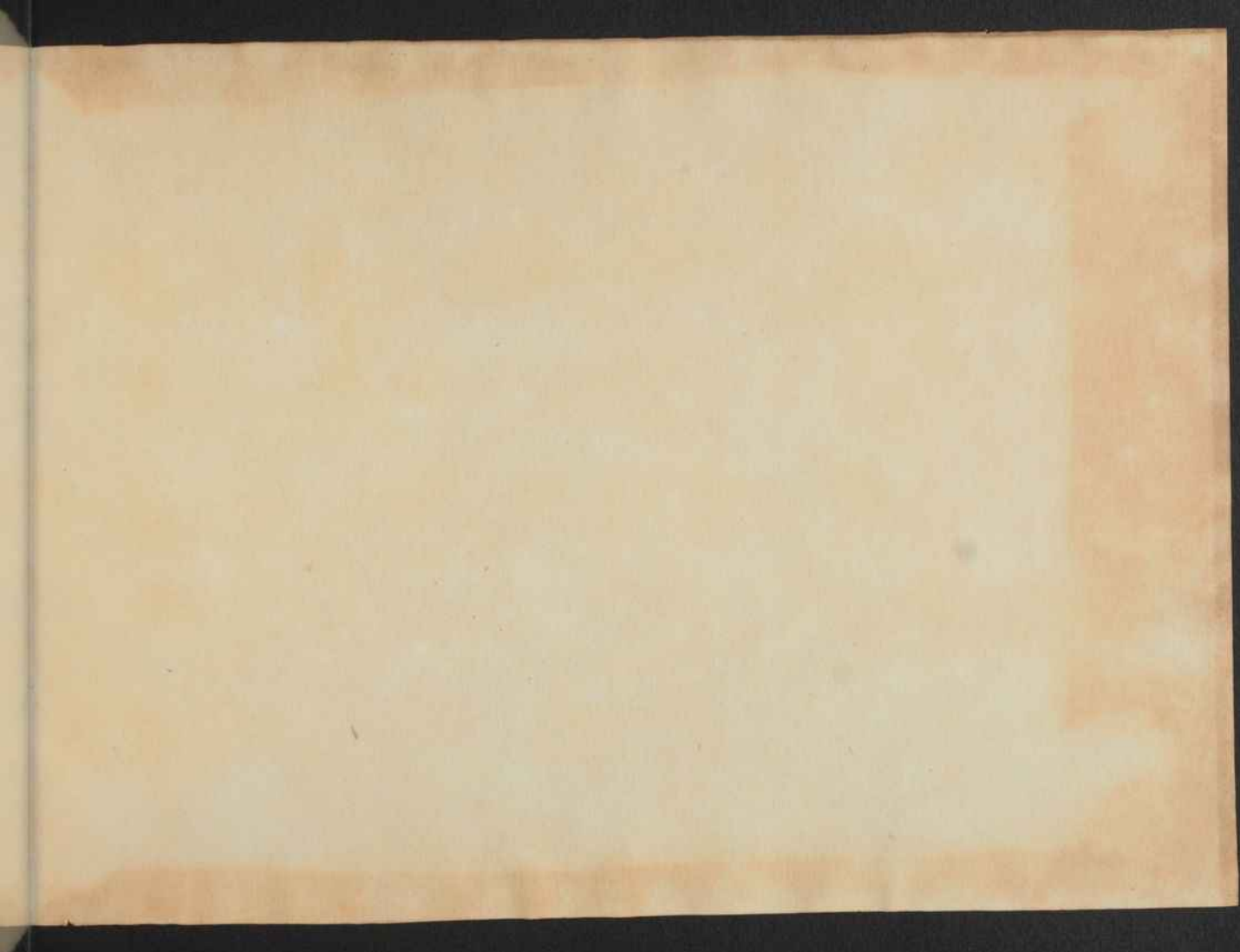
Agnus dei

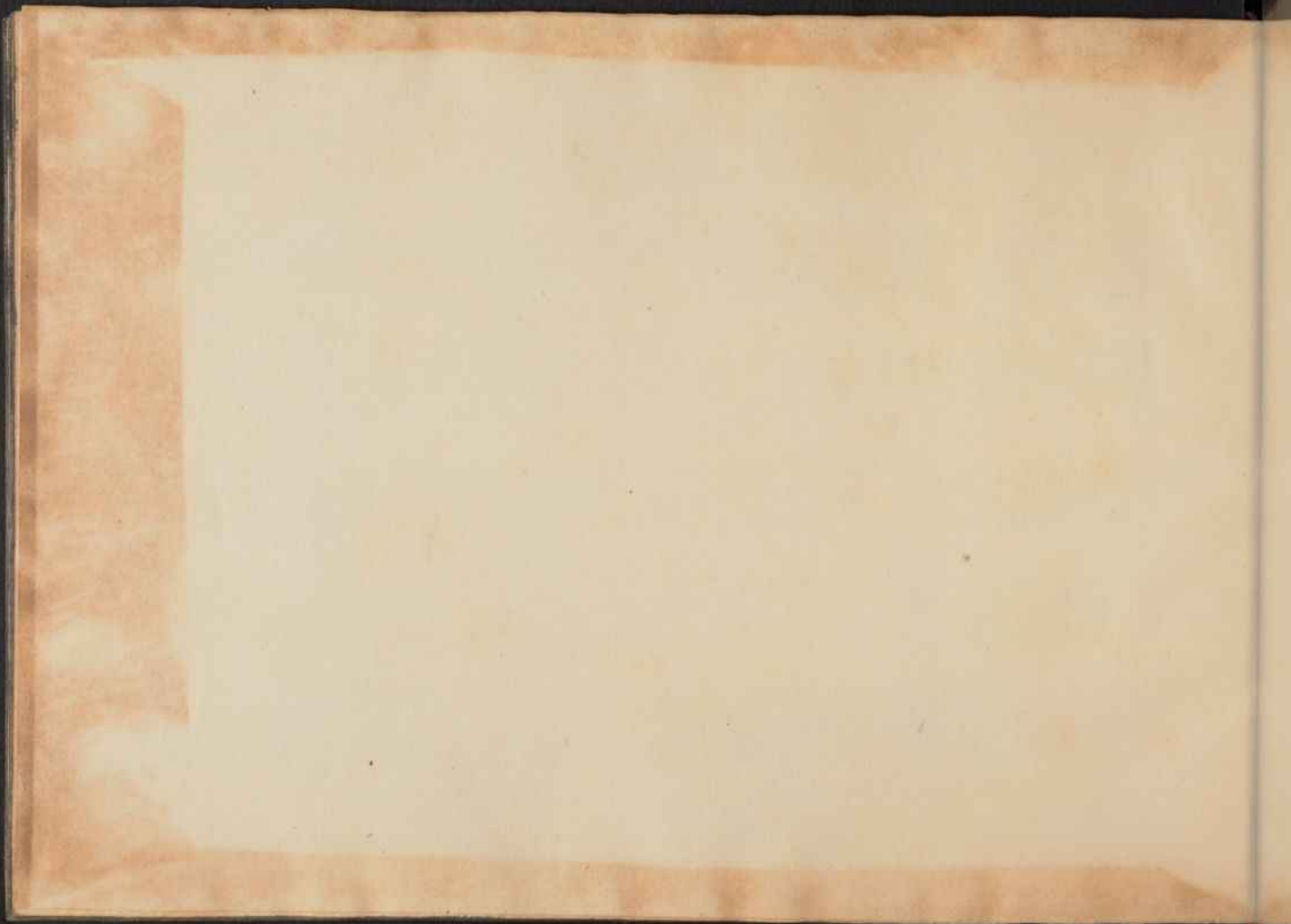
na no bis

bis pacem

BIBLIOTHECA PALAT.
VIENNOBONENSIS.







ÖNB



+Z138211800



0 1 2 3 4 5 6 7 8 9 10 11 12 13 14 15 16 17 18 19 20

IMAGO
PHOTOGRAPHIC

COLOUR AND MONOCHROME SEPARATION GUIDE

BLUE

CYAN

GREEN

YELLOW

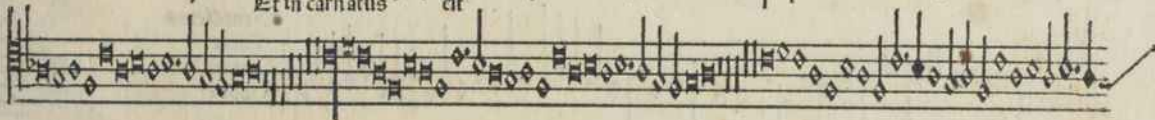
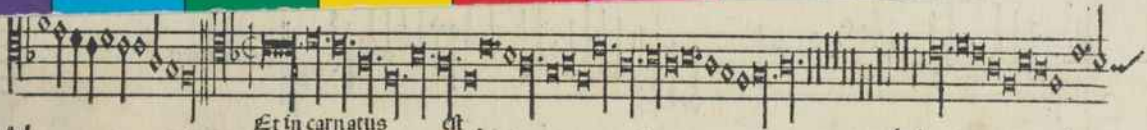
RED

MAGENTA

WHITE

3/COLOUR

BLACK



BIBLIOTHECA PALAT.
VINDEBONENSIS.

240

Handwritten musical score on five staves. The lyrics are: "Frie Zenedemande", "Christe. Tacet", "Kyrie eley son", "Et in terra par", "Qui tollis", "qui tollis", "Cum sancto spi", "Kyrie eley son", "Kyrie". The score includes various musical notations such as clefs, time signatures, and dynamic markings.

24

IMAGO PHOTOGRAPHIC COLOUR AND MONOCHROME SEPARATION GUIDE

0 1 2 3 4 5 6 7 8 9 10 11 12 13 14 15 16 17 18 19

inch 1 2 3 4 5 6 7 8 9 10 11 12 13 14 15 16 17 18 19 20

cm 1 2 3 4 5 6 7 8 9 10 11 12 13 14 15 16 17 18 19 20

BLUE CYAN GREEN YELLOW RED MAGENTA WHITE 3/COLOUR BLACK

71