

RONDEAU in G MAJOR (2)

(from: *Ouverture - Suite in G Major, TWV 55:G8*)

for Strings & Bass continuo

Score (01':20")

Georg Philipp Telemann (1681 - 1767)

(Urtext)

Rondeau $\text{♩} = 100$

Ed. Michel Rondeau

Violin I

Violin II

Viola

Double Bass

This system contains the first four measures of the piece. The Violin I part features a melodic line with eighth-note patterns. The Violin II part provides a harmonic accompaniment with quarter notes. The Viola and Double Bass parts play a steady bass line of quarter notes. The key signature is one sharp (F#) and the time signature is common time (C).

Vln. I

Vln. II

Vla.

D.B.

This system contains measures 5 through 8. Measure 5 is marked with a '5' above the staff. The Violin I part continues its melodic line. The Violin II part has a more active role with eighth-note patterns. The Viola and Double Bass parts continue their harmonic support. The key signature and time signature remain the same.

Vln. I

Vln. II

Vla.

D.B.

This system contains measures 11 through 14. Measure 11 is marked with an '11' above the staff. The Violin I part has a more active role with eighth-note patterns. The Violin II part continues its harmonic support. The Viola and Double Bass parts continue their harmonic support. The key signature and time signature remain the same.

RONDEAU in G MAJOR (2) - TWV 55:G8 - Telemann - Score

16

Vln. I

Vln. II

Vla.

D.B.

Detailed description: This system contains measures 16 through 20. The music is in G major (one sharp) and 3/4 time. The first violin part (Vln. I) features a melodic line with eighth-note patterns and some sixteenth-note runs. The second violin (Vln. II) and viola (Vla.) parts provide harmonic support with similar rhythmic patterns. The double bass (D.B.) part follows a steady eighth-note bass line. The system concludes with a repeat sign.

21

Vln. I

Vln. II

Vla.

D.B.

Detailed description: This system contains measures 21 through 25. The musical texture continues with the same instruments. The first violin part has more complex rhythmic figures, including some sixteenth-note passages. The second violin and viola parts maintain their harmonic roles. The double bass part continues with its eighth-note accompaniment. The system ends with a repeat sign.

27

Vln. I

Vln. II

Vla.

D.B.

D.C.

Detailed description: This system contains measures 27 through 31, which is the final system on the page. The music concludes with a double bar line and repeat dots. The first violin part has a final melodic flourish. The second violin and viola parts have a final chordal cadence. The double bass part ends with a final bass note. The instruction 'D.C.' (Da Capo) is written in the second violin part, indicating a repeat of the section.

RONDEAU in G MAJOR (2)

(from: *Ouverture - Suite in G Major, TWV 55:G8*)

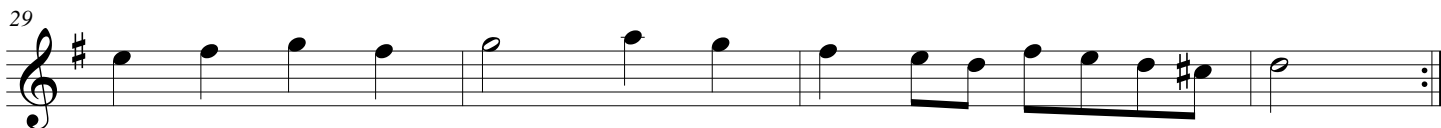
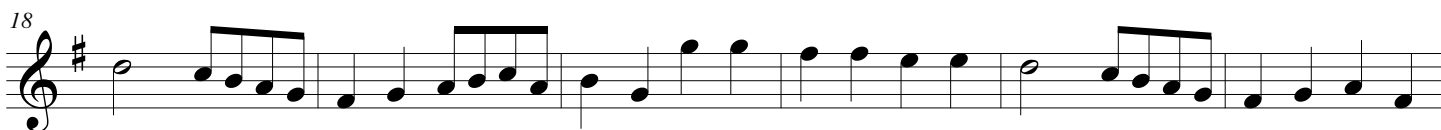
for Strings & Bass continuo

Violin I

Georg Philipp Telemann (1681 - 1767)

Ed. Michel Rondeau

Rondeau $\text{♩} = 100$



D.C.

RONDEAU in G MAJOR (2)

(from: Overture - Suite in G Major, TWV 55:G8)

for Strings & Bass continuo

Violin II

Georg Philipp Telemann (1681 - 1767)

Ed. Michel Rondeau

Rondeau $\text{♩} = 100$



D.C.

RONDEAU in G MAJOR (2)

(from: Overture - Suite in G Major, TWV 55:G8)

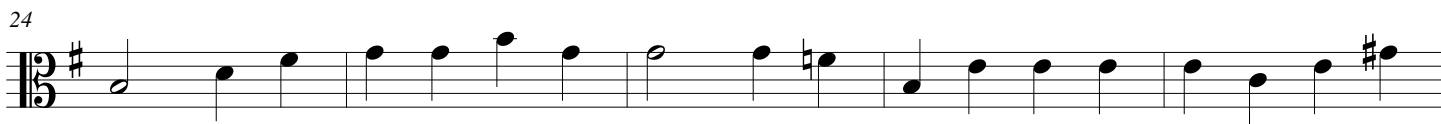
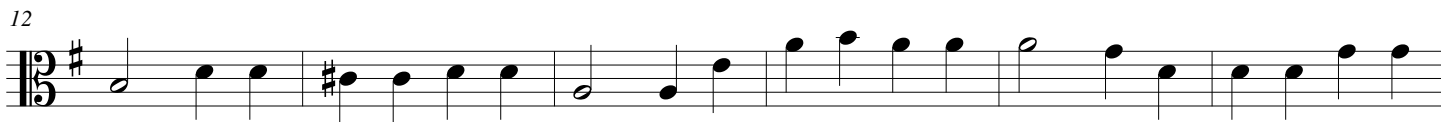
for Strings & Bass continuo

Viola

Georg Philipp Telemann (1681 - 1767)

Ed. Michel Rondeau

Rondeau $\text{♩} = 100$



D.C.

RONDEAU in G MAJOR (2)

(from: *Overture - Suite in G Major, TWV 55:G8*)

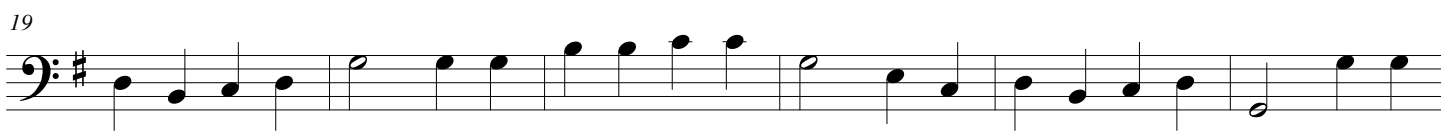
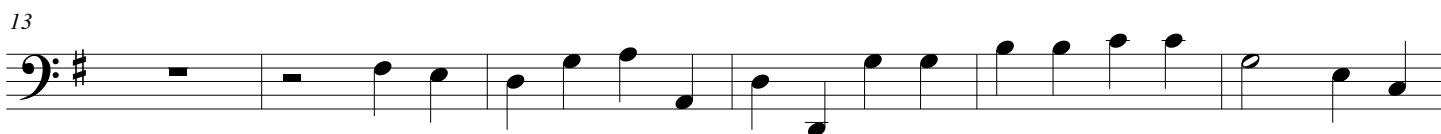
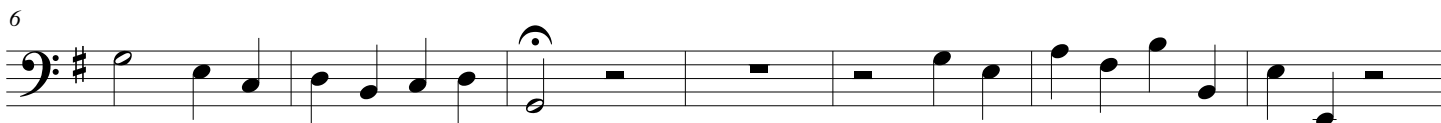
for Strings & Bass continuo

Double Bass

Georg Philipp Telemann (1681 - 1767)

Ed. Michel Rondeau

Rondeau $\text{♩} = 100$



D.C.