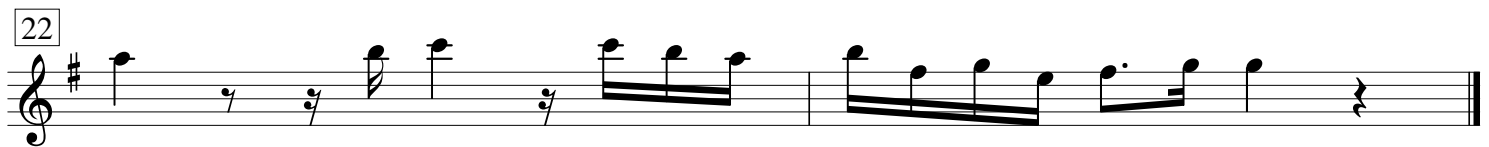
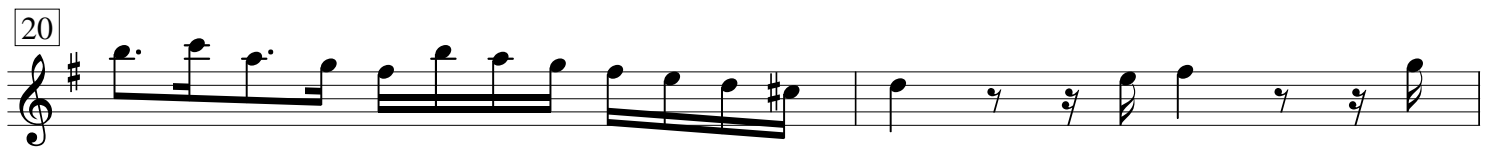
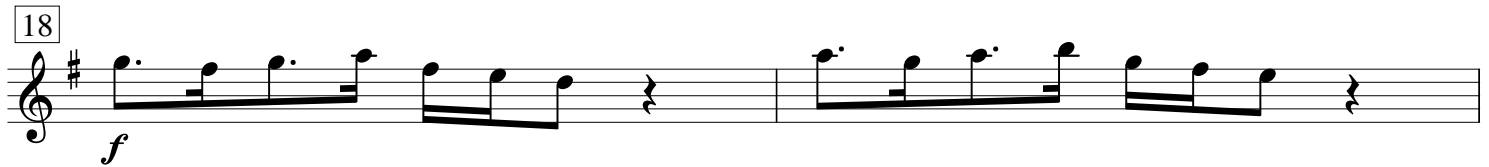
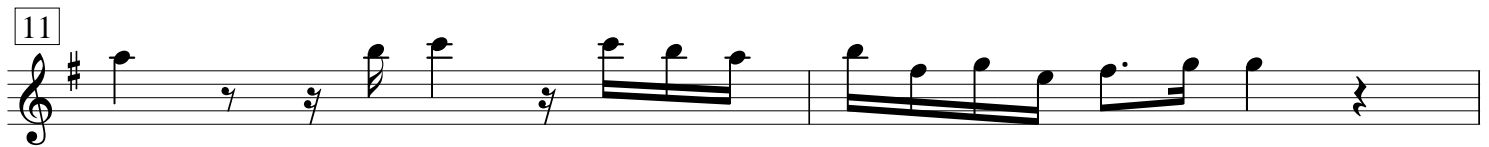
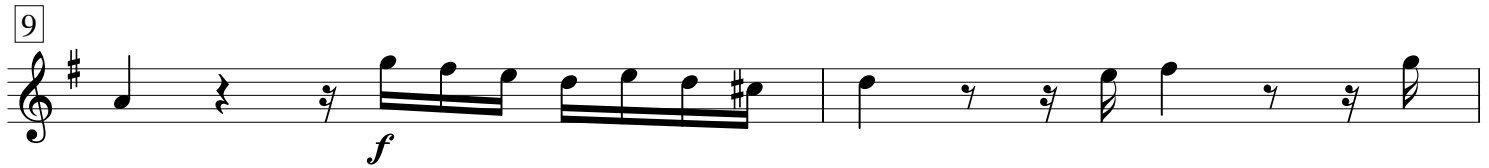
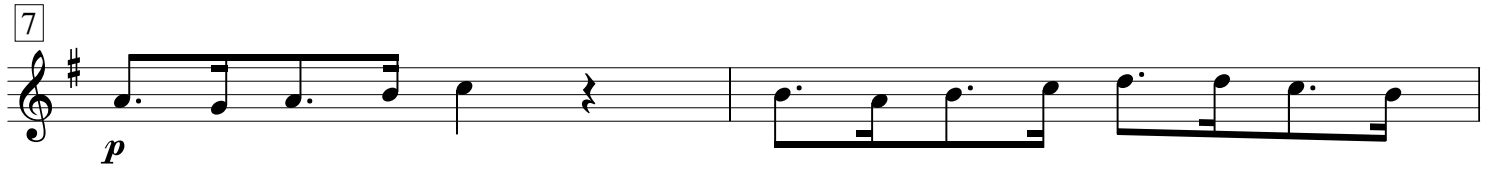
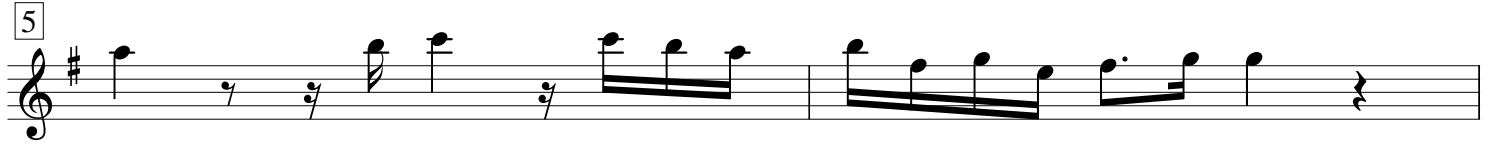
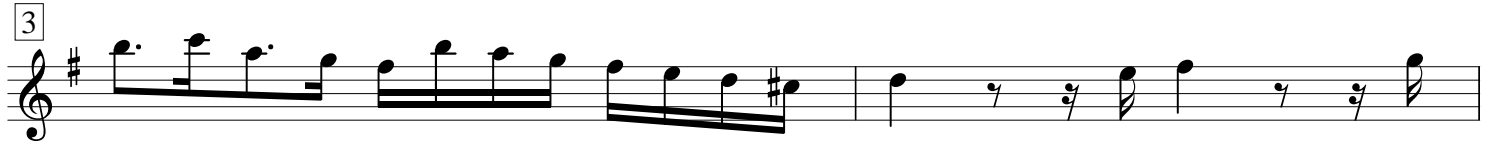
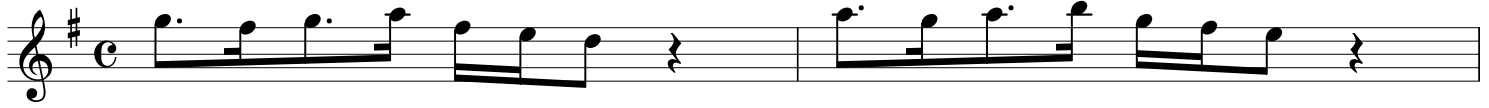


[ Dictum ]

Gottfried Heinrich Stölzel



Recitativo tacet

# Aria

Musical score for the Aria section, measures 1-60. The score is written in treble clef with a key signature of one sharp (F#) and a time signature of 2/4. The music features various dynamics including *f* (forte), *p* (piano), and *f* (forte). It includes several ornaments (trills) and rests. Measure numbers 6, 11, 17, 22, 29, 37, 43, 49, 55, and 60 are indicated in boxes on the left. The piece concludes with a double bar line and a 4-measure rest.

da capo

# Recitativo

Musical score for the Recitativo section, measures 1-6. The score is written in treble clef with a key signature of one sharp (F#) and a time signature of common time (C). The music consists of a few notes, including a trill in the first measure. Measure numbers 6 and 11 are indicated in boxes on the left.

## Aria

6

11

16

23

36

41

46

52

Recitativo tacet

## Choral

9

16

24