

Studenten-Music

Leipzig 1654

Johann Rosenmüller

c.1619 – 1684

Published by Johan Tufvesson.

Non-commercial copying welcome

Revision : 1.2

Studenten-Music

Leipzig 1654

Johann Rosenmüller

(c.1619–1684)

1-7 Paduan à 3

Tacet

8. Paduan à 5

6

11

16

21

26

29

33

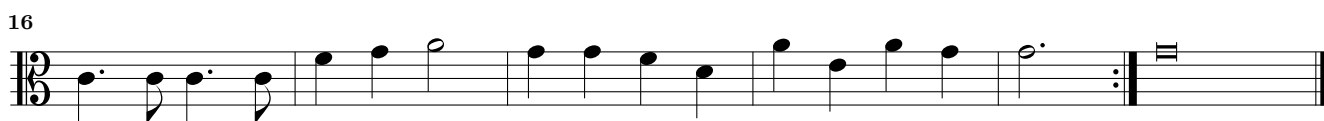
37

42

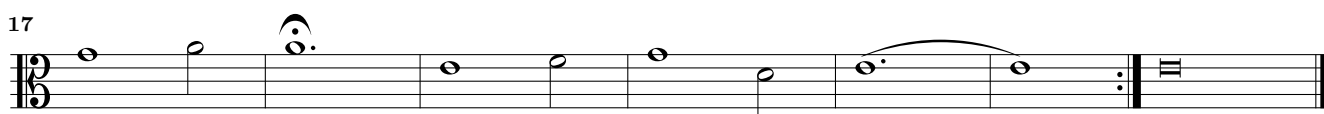
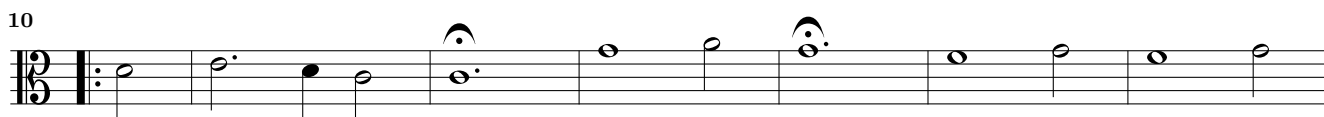
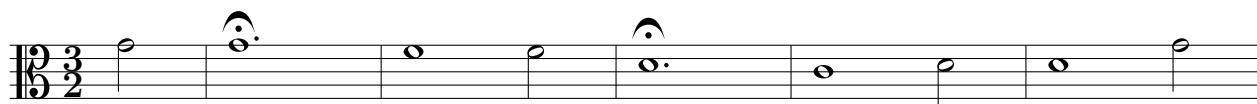
47

51

9. Alemanda



10. Courant Adagio



11. Courant Allegro



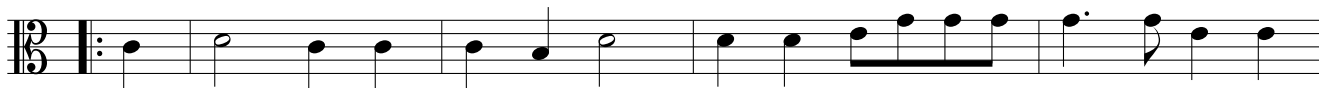
12. Alemanda



5



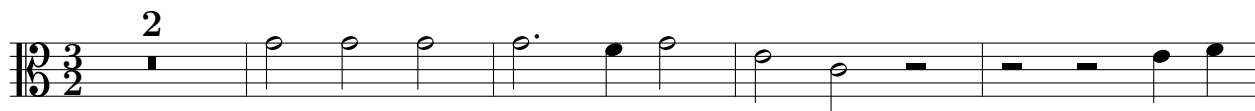
9



14



13. Courant



7



13



19



25



14. Ballo



4

Adagio



8

Allegro

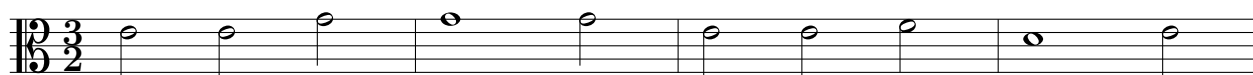


12

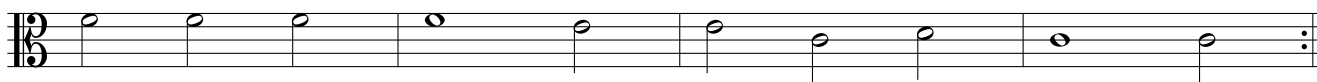


p

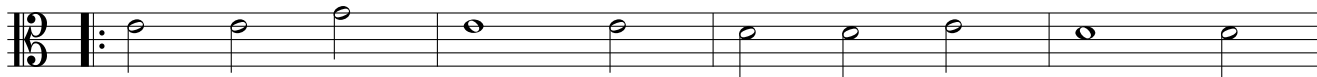
15. Sarabanda



5



9



13



16. Paduan



6



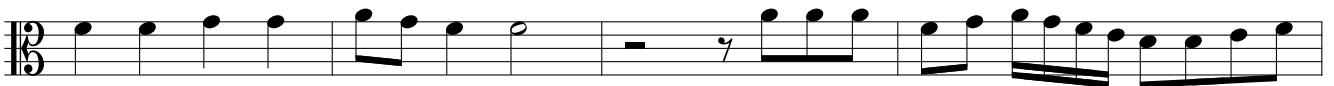
12



17



23



27



32



37



43



48



53



17. Alemanda

Musical score for 17. Alemanda, featuring a single staff in bass clef with a common time signature (C). The piece consists of 16 measures. The notation includes quarter notes, eighth notes, and a half note, with various rests and phrasing slurs. The piece concludes with a double bar line and repeat dots.

18. Courant

Musical score for 18. Courant, featuring a single staff in bass clef with a 3/2 time signature. The piece consists of 19 measures. The notation includes quarter notes, half notes, and a dotted half note, with various rests and phrasing slurs. The piece concludes with a double bar line and repeat dots.

19. Ballo Adagio

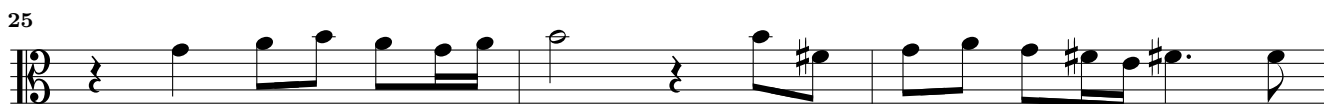
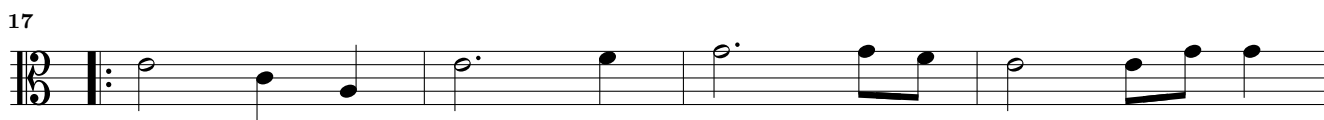
Musical score for 19. Ballo Adagio, featuring a single staff in bass clef with a common time signature (C). The piece consists of 9 measures. The notation includes quarter notes, eighth notes, and a half note, with various rests and phrasing slurs. The piece concludes with a double bar line and repeat dots.

Allegro

20. Sarabanda

Musical score for 20. Sarabanda, featuring a single staff in bass clef with a 3/2 time signature. The piece consists of 13 measures. The notation includes quarter notes, half notes, and a dotted half note, with various rests and phrasing slurs. The piece concludes with a double bar line and repeat dots.

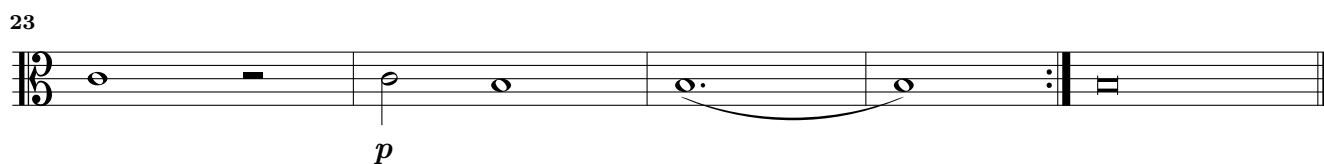
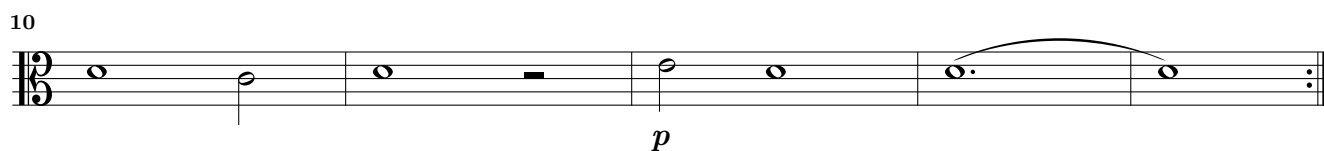
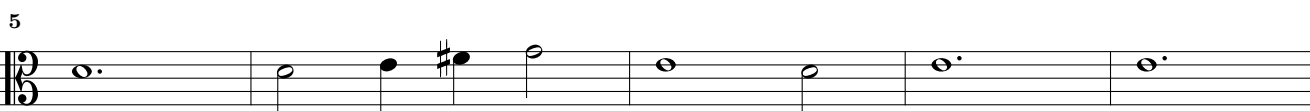
21. Paduan



22. Ballo



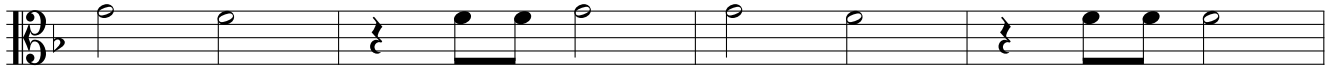
23. Courant



25. Alemanda



5



9



13



17



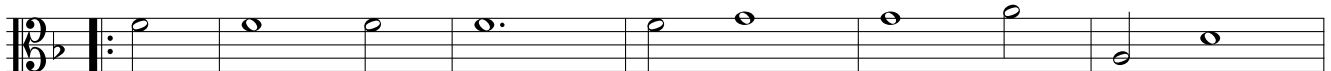
26. Courant



6



12



18



23



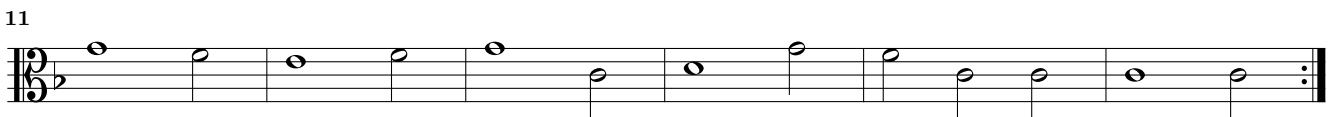
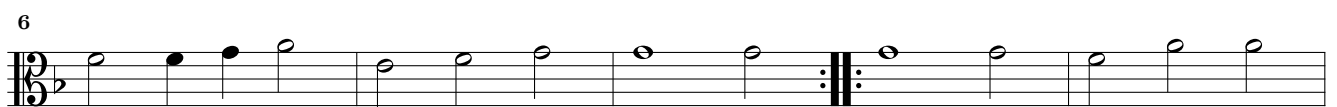
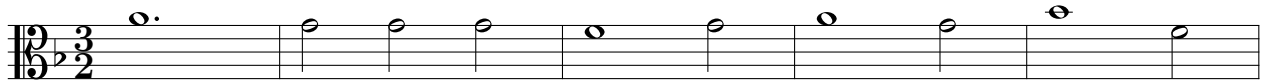
27. Alemanda

Studenten-Music – 29. Sarabanda – Altus

28. Ballo



29. Sarabanda



This page intentionally left blank.

30. Paduan

The musical score for '30. Paduan' is written in bass clef with a common time signature (C). The piece consists of 45 measures, with measure numbers 5, 9, 13, 17, 21, 25, 29, 33, 38, 42, and 45 explicitly labeled. The notation includes various rhythmic values such as quarter, eighth, and sixteenth notes, as well as rests and accidentals. The score concludes with a double bar line and repeat dots at the end of measure 45.

31. Alemanda

Musical score for 31. Alemanda, Altus part, measures 1-13. The score is written in bass clef with a common time signature (C). The melody consists of quarter and eighth notes, with a repeat sign at the end of measure 13.

32. Courant

Musical score for 32. Courant, Altus part, measures 1-17. The score is written in bass clef with a 3/2 time signature. The melody consists of quarter and eighth notes, with a repeat sign at the end of measure 17.

33. Ballo *Allegro*

Musical score for 33. Ballo *Allegro*, Altus part, measures 1-5. The score is written in bass clef with a common time signature (C). The melody consists of quarter and eighth notes, with a repeat sign at the end of measure 5.

34. Sarabanda

Musical score for 34. Sarabanda, Altus part, measures 1-11. The score is written in bass clef with a 3/2 time signature. The melody consists of quarter and eighth notes, with a repeat sign at the end of measure 11.

35. Paduan



6



10



14



19



23



28



33



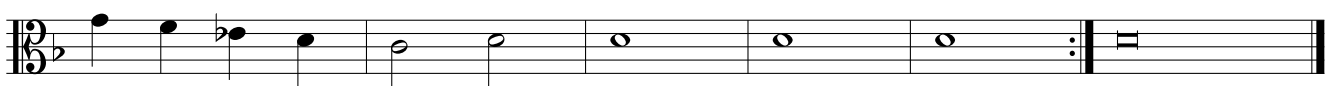
37



41



46



36. Alemanda

Musical score for 36. Alemanda, Altus part. The score is in 2/4 time and B-flat major. It consists of four staves of music. The first staff starts with a treble clef and a common time signature. The second staff has a measure number '4' below it. The third staff has a measure number '8' below it. The fourth staff has a measure number '13' below it. The piece ends with a double bar line and repeat signs.

37. Courant

Musical score for 37. Courant, Altus part. The score is in 3/2 time and B-flat major. It consists of three staves of music. The first staff starts with a treble clef and a 3/2 time signature. The second staff has a measure number '6' below it. The third staff has a measure number '12' below it. The fourth staff has a measure number '20' below it. The piece ends with a double bar line and repeat signs.

38. Ballo Adagio

Musical score for 38. Ballo Adagio, Altus part. The score is in 2/4 time and B-flat major. It consists of three staves of music. The first staff starts with a treble clef and a common time signature. The second staff has a measure number '5' below it and the tempo marking 'Allegro' above it. The third staff has a measure number '9' below it. The piece ends with a double bar line and repeat signs.

39. Sarabanda

Musical score for 39. Sarabanda, Altus part. The score is in 3/2 time and B-flat major. It consists of three staves of music. The first staff starts with a treble clef and a 3/2 time signature. The second staff has a measure number '6' below it. The third staff has a measure number '11' below it. The piece ends with a double bar line and repeat signs.

40. Paduan



8



12



17



21



25



29



34



38



42



45



41. Alemanda

Musical score for Alemanda, measures 1-10. The piece is in 3/4 time and G major. The notation is in bass clef. Measure 1 starts with a common time signature 'C'. The melody consists of quarter and eighth notes. Measure 4 is marked with a '4'. Measure 7 is marked with a '7'. Measure 11 is marked with an '11'. The piece ends with a double bar line and repeat dots.

42. Courant

Musical score for Courant, measures 1-20. The piece is in 3/2 time and G major. The notation is in bass clef. Measure 7 is marked with a '7'. Measure 12 is marked with a '12'. Measure 20 is marked with a '20'. The piece ends with a double bar line and repeat dots.

43. Ballo

Musical score for Ballo, measures 1-4. The piece is in common time and G major. The notation is in bass clef. Measure 5 is marked with a '5'. The piece ends with a double bar line and repeat dots.

44. Sarabanda

Musical score for Sarabanda, measures 1-10. The piece is in 3/2 time and G major. The notation is in bass clef. Measure 6 is marked with a '6'. Measure 11 is marked with an '11'. The piece ends with a double bar line and repeat dots.

45. Paduan



6



11



17



21



24



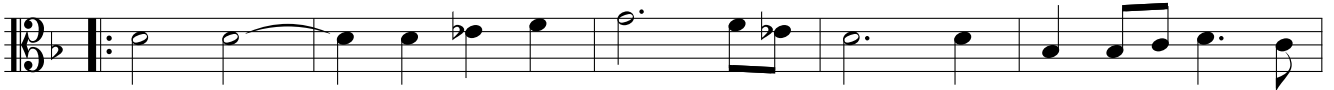
27



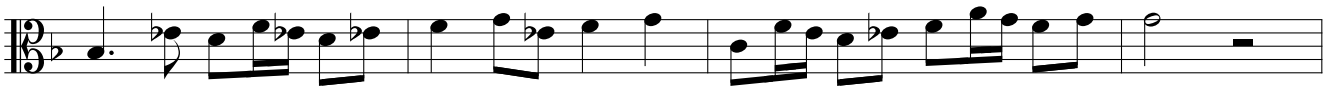
31



35



40



44



48



46. Alemanda

Musical score for Alemanda, measures 1-10. The piece is in 3/4 time and B-flat major. It consists of ten measures of music. Measure 10 ends with a double bar line and repeat dots.

47. Courant

Musical score for Courant, measures 1-18. The piece is in 3/2 time and B-flat major. It consists of three systems of six measures each. Measure 18 ends with a double bar line and repeat dots.

48. Ballo Adagio

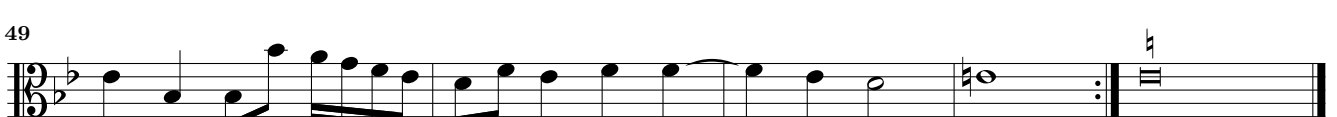
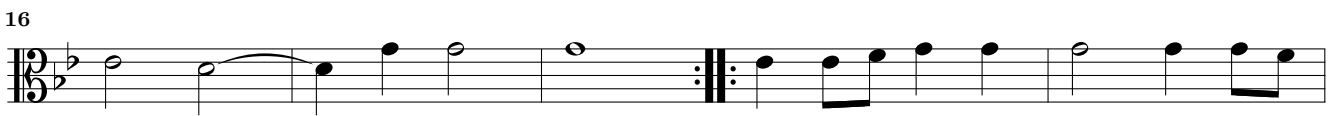
Musical score for Ballo Adagio, measures 1-10. The piece is in 3/4 time and B-flat major. It consists of two systems of five measures each. Measure 10 ends with a double bar line and repeat dots.

Allegro

49. Sarabanda

Musical score for Sarabanda, measures 1-11. The piece is in 3/2 time and B-flat major. It consists of three systems of four measures each. Measure 11 ends with a double bar line and repeat dots.

50. Paduan



51. Alemanda

Musical score for Alemanda, featuring a single staff in bass clef with a common time signature (C). The piece consists of four lines of music. The first line starts with a treble clef and a common time signature. The second line begins with a measure rest of 4 measures. The third line begins with a measure rest of 7 measures. The fourth line begins with a measure rest of 11 measures. The score concludes with a double bar line and repeat signs.

52. Courant

Musical score for Courant, featuring a single staff in bass clef with a 3/2 time signature. The piece consists of four lines of music. The first line starts with a treble clef and a 3/2 time signature. The second line begins with a measure rest of 5 measures. The third line begins with a measure rest of 11 measures. The fourth line begins with a measure rest of 17 measures. The score concludes with a double bar line and repeat signs.

53. Ballo Adagio Adagio

Musical score for Ballo Adagio Adagio, featuring a single staff in bass clef with a common time signature (C). The piece consists of two lines of music. The first line starts with a treble clef and a common time signature. The second line begins with a measure rest of 5 measures and is marked *Allegro*. The score concludes with a double bar line and repeat signs.

54. Sarabanda

Musical score for Sarabanda, featuring a single staff in bass clef with a 3/2 time signature. The piece consists of three lines of music. The first line starts with a treble clef and a 3/2 time signature. The second line begins with a measure rest of 6 measures. The third line begins with a measure rest of 12 measures. The score concludes with a double bar line and repeat signs.

55. Paduan

The musical score for '55. Paduan' is written in G major (one sharp) and common time (C). It consists of ten staves of music. The notation includes various rhythmic values such as quarter, eighth, and sixteenth notes, as well as rests and repeat signs. The piece concludes with a double bar line and repeat dots.

56. Alemanda

Musical score for '56. Alemanda' in G major and common time (C). The score consists of four staves. The first staff begins with a treble clef, a key signature of one sharp (F#), and a common time signature (C). The melody is written in a single line. The second and third staves continue the melody with various rhythmic values including eighth and sixteenth notes. The fourth staff concludes the piece with a double bar line and repeat dots.

57. Courant

Musical score for '57. Courant' in G major and 3/2 time. The score consists of seven staves. The first staff begins with a treble clef, a key signature of one sharp (F#), and a 3/2 time signature. The melody is written in a single line. The second and third staves continue the melody with various rhythmic values including quarter and eighth notes. The fourth staff begins with a repeat sign. The fifth and sixth staves continue the melody. The seventh staff concludes the piece with a double bar line and repeat dots.

58. Ballo

Musical score for '58. Ballo' in G major, common time (C). The score consists of four staves. The first staff begins with a treble clef, a key signature of one sharp (F#), and a common time signature. The melody is written in a simple, rhythmic style. The second and third staves continue the melody with various note values and rests. The fourth staff concludes the piece with a double bar line and repeat dots.

59. Courant

Musical score for '59. Courant' in G major, 3/2 time. The score consists of six staves. The first staff begins with a treble clef, a key signature of one sharp (F#), and a 3/2 time signature. The melody is written in a simple, rhythmic style. The second and third staves continue the melody with various note values and rests. The fourth and fifth staves conclude the piece with a double bar line and repeat dots.

60. Sarabanda

Musical score for '60. Sarabanda' in G major, 3/2 time. The score consists of four staves. The first staff begins with a treble clef, a key signature of one sharp (F#), and a 3/2 time signature. The melody is written in a simple, rhythmic style. The second and third staves continue the melody with various note values and rests. The fourth staff concludes the piece with a double bar line and repeat dots.