

Acte III

Scène 2

Cyril Plante

Allegro agitato

The score is for an orchestra and a vocal soloist, M me de Clèves. The tempo is 'Allegro agitato'. The key signature is one flat (B-flat major/D minor) and the time signature is 6/8. The orchestration includes Flutes, Oboes, Bb Clarinets, Bassoons, Horns I-II, Bb Trumpets, Trombones, C Tuba, Timpani, Harp, Violins I and II, Violas, Violoncellos, and Contrabasses. The vocal line for M me de Clèves has lyrics in French: 'Ne di - tes rien, Ma - da - me, ne di - tes rien! Vous'. The score shows four measures. The first three measures are mostly rests for the woodwinds and strings, with the timpani playing a rhythmic pattern of eighth notes. In the fourth measure, several instruments enter with melodic lines. The Oboe, Bb Clarinets, Bb Trumpets, Trombones, and C Tuba all play a similar eighth-note melody starting on a G4. The Bassoons play a lower octave version of this melody. The Violins I and II, Violas, and Violoncellos also have parts in this measure. The Contrabasses play a sustained chord. The vocal line enters in the first measure with a descending eighth-note pattern. Dynamics include *f* (forte) and *p* (piano).

5

Fl.

Ob.

B \flat Cl.

Bsn.

Hn.

B \flat Tpt.

Trb.

C Tu.

Timp.

Hrp.

M me de Cl.

M. St.

Nem.

Vlns. 1

Vlns. 2

Vlas.

Vlcs.

Cbs.

crescendo

ff

crescendo

ff

crescendo

ff

crescendo

ff

crescendo

ff

crescendo

ff

crescendo

ff

crescendo

ff

crescendo

ff

crescendo

ff

crescendo

ff

crescendo

ff

crescendo

ff

crescendo

ff

crescendo

ff

pour-riez brouil-ler le duc et le vi-dâ-

2

3

3

ff

3

Andante

8

Fl. *mf* *f*

Ob. *mf*

B♭ Cl.

Bsn.

Hn.

B♭ Tpt. *f*

Trb.

C Tu.

Timp. *mf*

Hrp.

M me de Cl. me.

M. St. Je se - rai pru - den - te, ma chè - re.

Nem.

Vlins. 1 *mf*

Vlins. 2 *mf*

Vlas. *mf*

Vlcs. *mf*

4 Cbs. *mf*

12

Fl. *p*

Ob. *f* *p*

B♭ Cl.

Bsn.

Hn. *f* *p*

B♭ Tpt. *p*

Trb.

C Tu.

Timp.

Hrp.

M me de Cl.

M. St.

Nem. *8*
 Mes - da - mes, vous par - li - ez de moi quand je

Vlins. 1

Vlins. 2

Vlas.

Vlcs. *p*

Cbs.

16

Fl.

Ob.

B♭ Cl.

Bsn.

Hn.

B♭ Tpt.

Trb.

C Tu.

Timp.

Hrp.

Mme de Cl.

M. St.

Nem.

Vlins. 1

Vlins. 2

Vlas.

Vlcs.

6 Cbs.

f *p*

p

f *p*

f

f

f

En ef - fet, je veux sa - voir de vous si u - ne his -
suis ren - tré.

19

Fl.

Ob.

B♭ Cl.

Bsn.

Hn.

B♭ Tpt.

Trb.

C Tu.

Timp.

Hrp.

M me de Cl.

M. St.

Nem.

Vlns. 1

Vlns. 2

Vlas.

Vlcs.

Cbs.

p

p

p

p

p

f

f

f

toi re que l'on m'a con-tée est vé-ri-ta-ble. E-tes vous ce-lui à qui

8

f

f

f

f

23

Fl.

Ob.

B \flat Cl.

Bsn.

Hn.

B \flat Tpt.

Trb.

C Tu.

Timp.

Hrp.

M me de Cl.

M. St.

Nem.

Vlms. 1

Vlms. 2

Vlas.

Vlcs.

Cbs.

mf

mf

mf

p

p

p

p

l'on³ ca - che u - ne pas - si - on et qu'on a - voue son a - mour

8

Fl.

Ob.

B♭ Cl.

Bsn.

Hn.

B♭ Tpt.

Trb.

C Tu.

Timp.

Hrp.

M me de Cl.

M. St.

à son ma - ri.

Nem.

Quel em - bar - ras!

Vlins. 1

Vlins. 2

Vlas.

Vlcs.

Cbs.

32

Fl. *mf* *f*

Ob.

B \flat Cl.

Bsn.

Hn.

B \flat Tpt. *mf* *f*

Trb.

C Tu.

Timp.

Hrp.

M me de Cl.

M. St.

Nem.

Vlms. 1

Vlms. 2 *mf*

Vlas. *mf*

Vlcs. *mf*

Cbs. *mf*

37

Fl. *p*

Ob.

B♭ Cl.

Bsn.

Hn.

B♭ Tpt. *p*

Trb.

C Tu.

Timp.

Hrp.

M me de Cl.

M. St.

Nem. ₈ Quel em - bar - ras! Quel

Vlins. 1 *mf*

Vlins. 2 *p*

Vlas. *p* *mf*

Vlcs. *p*

Cbs. *p*

Re -

11

Fl.

Ob.

B \flat Cl.

Bsn.

Hn.

B \flat Tpt.

Trb.

C Tu.

Timp.

Hrp.

M me de Cl.

gar - dez - le, quel em - bar - ras!

M. St.

Vó - yez et ju - gez si cet - te a - ven - tu - re

Nem.

em - bar - ras!

Vlns. 1

Vlns. 2

Vlas.

Vlcs.

Cbs.

Lento

45

Fl.

Ob.

B \flat Cl.

Bsn.

Hn.

B \flat Tpt.

Trb.

C Tu.

Timp.

Hrp.

M me de Cl.

M. St.
n'est pas la sien - ne!

Nem.
8 J'a - voue ê - tre af - fli - gé de l'in - fi -

Vlns. 1
p

Vlns. 2
p

Vlas.
p

Vlcs.
p

Cbs.
p

13

49

Fl.

Ob.

B \flat Cl.

Bsn.

Hn.

B \flat Tpt.

Trb.

C Tu.

Timp.

Hrp.

M me de Cl.

M. St.

Nem.

Vlms. 1

Vlms. 2

Vlas.

Vlcs.

Cbs.

8 dé - li - té du vi - dà - me. On m'a con - fi - é des cho - ses

53

Fl.

Ob.

B \flat Cl.

Bsn.

Hn.

B \flat Tpt.

Trb.

C Tu.

Timp.

Hrp.

M me de Cl.

M. St.

Nem.

Vlns. 1

Vlns. 2

Vlas.

Vlcs.

Cbs.

8 de gran - de im - por - tan - ce mais je ne sais

pp

pp

pp

56

Fl. *f*

Ob. *mf*

B♭ Cl.

Bsn.

Hn.

B♭ Tpt.

Trb.

C Tu.

Timp.

Hrp.

M me de Cl.
 Quel em - bar - ras! quel em - bar - ras!

M. St.

Nem.
 8 pas pour-quoi vous me fai - tes l'hon - neur

Vlns. 1

Vlns. 2

Vlas. *f*

Vlcs. *f*

16 Cbs. *f*

59

Fl. *mf* *p*

Ob.

B♭ Cl.

Bsn.

Hn. *pp*

B♭ Tpt.

Trb. *pp*

C Tu. *pp*

Timp.

Hrp. *p*

M me de Cl.

M. St.

Nem. ₈ de me mé - ler à cet - te a - ven - tu - re. Mon a - mi ne m'a pas a -

Vlns. 1

Vlns. 2

Vlas. *p*

Vlcs. *p*

Cbs. *p*

65

Fl. *pp* *mf*

Ob.

B♭ Cl.

Bsn.

Hn.

B♭ Tpt.

Trb.

C Tu.

Timp.

Hrp.

M me de Cl.

M. St.

Nem. 8
 vou - é le nom de cet - te per - son - ne. Je sais seu - le -

Vlns. 1

Vlns. 2

Vlas. *mf*

Vlcs. *mf*

Cbs. *mf*

69

Fl.

Ob.

B \flat Cl.

Bsn.

Hn.

B \flat Tpt.

Trb.

C Tu.

Timp.

Hrp.

M me de Cl.

M. St.

Nem.

Vlns. 1

Vlns. 2

Vlas.

Vlcs.

Cbs.

8 ment qu'il est l'hom - me du mon - de le plus a - mou - reux

73

Fl.

Ob.

B♭ Cl.

Bsn.

Hn.

B♭ Tpt.

Trb.

C Tu.

Timp.

Hrp.

M me de Cl.

M. St.

Nem.

Vlns. 1

Vlns. 2

Vlas.

Vlcs.

20 Cbs.

p

p

mf *p*

mf *p*

p

p

p

Le trou - vez -
et le plus à plain - dre.

78

Fl.

Ob.

B \flat Cl.

Bsn.

Hn.

B \flat Tpt.

Trb.

C Tu.

Timp.

Hrp.

M me de Cl.

M. St.

Nem.

Vlns. 1

Vlns. 2

Vlas.

Vlcs.

Cbs.

vous si à plain - dre puis - qu'il est ai - mé?

Cro - yez-vous qu'il

21

Fl.

Ob.

B♭ Cl.

Bsn.

Hn.

B♭ Tpt.

Trb.

C Tu.

Timp.

Hrp.

M me de Cl.

M. St.

Nem.

le soit... La da - me qu'il ai - me i - gno - re ce qu'est l'a -

Vlms. 1

Vlms. 2

Vlas.

Vlcs.

Cbs.

mf

mf

mf

mf

mf

mf

mf

86

Fl.

Ob.

B \flat Cl.

Bsn.

Hn.

B \flat Tpt.

Trb.

C Tu.

Timp.

Hrp.

M me de Cl.

M. St.

Nem.

Vlms. 1

Vlms. 2

Vlas.

Vlcs.

Cbs.

p

p

p

f

f

f

p

p

p

p

p

p

8

mour. Peut - on se flat - ter d'au - cu - ne es -

91

Fl.

Ob.

B \flat Cl.

Bsn.

Hn.

B \flat Tpt.

Trb.

C Tu.

Timp.

Hrp.

M me de Cl.

M. St.

Nem.

Vlms. 1

Vlms. 2

Vlas.

Vlcs.

Cbs.

8 pé-ran - ce? Mais tout mal - heu - reux qu'il est, il ne chan - ge - rait pas son

96

Fl.

Ob.

B \flat Cl.

Bsn.

Hn.

B \flat Tpt.

Trb.

C Tu.

Timp.

Hrp.

M me de Cl.

M. St.

Nem.

Vlns. 1

Vlns. 2

Vlas.

Vlcs.

Cbs.

8

é - tat con - tre ce - lui du plus heu - reux a - mants du mon - de.

mf

mf

mf

mf

mp

f

f

mp

f

mp

f

25

100

Fl.

Ob.

B♭ Cl.

Bsn.

Hn.

B♭ Tpt.

Trb.

C Tu.

Timp.

mf

Hrp.

M me de Cl.

M. St.

Je com - men - ce à croi - re qu'il ne s'a - git pas

Nem.

Vlns. 1

p

Vlns. 2

p

Vlas.

p

Vlcs.

p

Cbs.

p

103

Fl.

Ob.

B \flat Cl.

Bsn.

Hn.

B \flat Tpt.

Trb.

C Tu.

Timp.

Hrp.

M me de Cl.

M. St.

Nem.

Vlns. 1

Vlns. 2

Vlas.

Vlcs.

Cbs.

mf *p* *mf* *p*

de vous. Ma - da - me de Clè - ves sou - tient que

107

Fl. *pp*

Ob. *pp*

B \flat Cl.

Bsn.

Hn.

B \flat Tpt.

Trb.

C Tu.

Timp.

Hrp. *p* *f*

M me de Cl. Je le pen - se en ef - fet.

M. St. *8* This - toi - re est in - vrai - sem - bla - ble.

Nem.

Vlins. 1

Vlins. 2

Vlas.

Vlcs.

Cbs.

111

Fl. *p*

Ob.

B \flat Cl.

Bsn.

Hn.

B \flat Tpt.

Trb.

C Tu.

Timp.

Hrp. *p*

M me de Cl.
 Quel - le fem - me au - rait cet - te im - pru - den - ce et quel ma - ri

M. St.

Nem.

Vlns. 1

Vlns. 2 *p*

Vlas. *p*

Vlcs. *p*

Cbs.

115

Fl.

Ob.

B \flat Cl.

Bsn.

Hn.

B \flat Tpt.

Trb.

C Tu.

Timp.

Hrp.

Mme de Cl.

M. St.

Nem.

Vlns. 1

Vlns. 2

Vlas.

Vlcs.

Cbs.

30

au - rait pu ra - con - té ce - la?

8

3

3

3

3

mp

mp

pp

pp

pp

pp

Peut - ê - tre la ja - lou - sie

Fl.

Ob.

B \flat Cl.

Bsn.

Hn.

B \flat Tpt.

Trb.

C Tu.

Timp.

Hrp.

M me de Cl.

M. St.

Nem.

Vlns. 1

Vlns. 2

Vlas.

Vlcs.

Cbs.

p

pp

p

ou la cu - rio - si - té d'en - sa - voir da - van - ta - ge?

Detailed description: This is a page of a musical score for page 119. It contains 18 staves. The instruments listed on the left are Flute (Fl.), Oboe (Ob.), Bass Clarinet (B \flat Cl.), Bassoon (Bsn.), Horn (Hn.), Bass Trombone (B \flat Tpt.), Trumpet (Trb.), C Trumpet (C Tu.), Timpani (Timp.), Harp (Hrp.), Mezzo-soprano (M me de Cl.), Soprano (M. St.), Narrator (Nem.), Violin 1 (Vlns. 1), Violin 2 (Vlns. 2), Viola (Vlas.), Violoncello (Vlcs.), and Double Bass (Cbs.). The Flute, Bass Clarinet, Bass Trombone, C Trumpet, Timpani, Harp, Mezzo-soprano, Violin 1, Violin 2, Viola, Violoncello, and Double Bass staves contain rests. The Oboe staff has a melodic line starting in the fourth measure with a dynamic marking of *p*. The Bassoon staff has a melodic line starting in the fourth measure with a dynamic marking of *pp*. The Horn staff has a melodic line starting in the first measure with a dynamic marking of *p*. The Narrator staff has a melodic line with lyrics: "ou la cu - rio - si - té d'en - sa - voir da - van - ta - ge?".

124

Fl.

Ob.

B \flat Cl.

Bsn.

Hn.

B \flat Tpt.

Trb.

C Tu.

Timp.

Hrp.

M me de Cl.

M. St.

Nem.

Vlns. 1

Vlns. 2

Vlas.

Vlcs.

Cbs.

ff

ff

ff

f

f

f

Par - d \acute{o} n - nez - moi

Fl.

Ob.

B \flat Cl.

Bsn.

Hn.

B \flat Tpt.

Trb.

C Tu.

Timp.

Hrp.

M me de Cl.

M. St.

Nem.

Vlms. 1

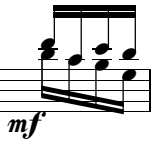
Vlms. 2

Vlas.

Vlcs.

Cbs.

Vivo



133

Fl.

Ob.

B \flat Cl.

Bsn.

Hn.

B \flat Tpt.

Trb.

C Tu.

Timp.

Hrp.

M me de Cl.

M. St.

Nem.

8

Je don - ne - rai ma vie pour vous par - ler un mo - ment.

Vlns. 1

Vlns. 2

Vlas.

Vlcs.

Cbs.

p

Fl.

Ob.

B♭ Cl.

Bsn.

Hn.

B♭ Tpt.

Trb.

C Tu.

Timp.

Hrp.

Mme de Cl.

M. St.

Nem.

Vlins. 1

Vlins. 2

Vlas.

Vlcs.

Cbs.

136

Fl.

Ob.

B♭ Cl.

Bsn.

Hn.

B♭ Tpt.

Trb.

C Tu.

Timp.

Hrp.

Mme de Cl.

M. St.

Nem.

Vlins. 1

Vlins. 2

Vlas.

Vlcs.

Cbs.

(l'interrompant)

Ne di - tes rien...

Je vous sup - plie de croi - re...

35