

# Concerto a Cinque RV 364

## Violino Primo Principale

A. Vivaldi (1678-1741)

[1.] Allegro

5

9

14 *Solo*

18

21

24

28

31

34

37 *Tutti*

41

44 *Solo*

48 *Tutti*

52

55

58

61

65

69 *Solo*

72

75 *Tutti*

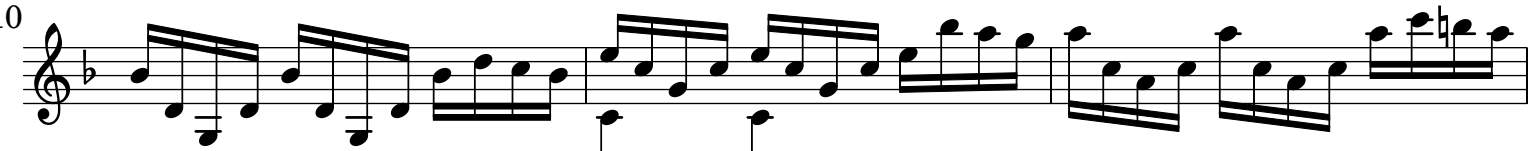
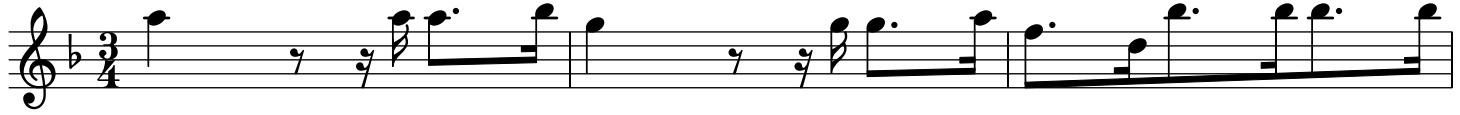
78

81

85

The image displays a page of musical notation for the Violino Primo Principale part of Vivaldi's Concerto a Cinque RV364. The score is written on ten staves, each beginning with a measure number. The key signature is one flat (B-flat), and the time signature is 3/4. The notation includes various rhythmic patterns, such as sixteenth and thirty-second notes, and rests. Dynamic markings 'Solo' and 'Tutti' are placed above the staves at measures 44, 48, 69, and 75. The piece concludes with a double bar line at measure 85.

## [2.] Largo[-Presto-Largo]



40

43

46

49 *Presto*  
*Solo*

52

55

58

61

64

67

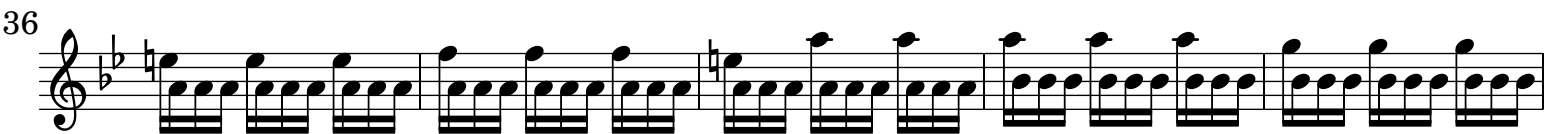
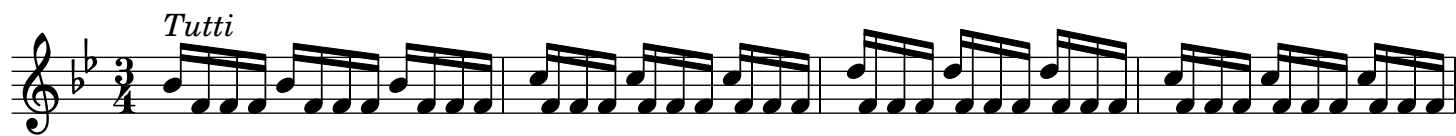
70

73 *Largo*  
*Tutti*

76

Detailed description: This is a page of a musical score for the Violino Primo Principale part of Vivaldi's Concerto a Cinque RV364. The score is written in treble clef with a key signature of one flat (B-flat). It consists of ten staves of music, numbered 40 through 76. The first staff (40-43) features a melodic line with eighth and sixteenth notes. The second staff (43-46) continues this line with some rests. The third staff (46-49) shows a continuation of the melodic pattern. At measure 49, the tempo changes to 'Presto' and the performance instruction 'Solo' is indicated. The fourth staff (49-52) begins with a more rhythmic, eighth-note pattern. The fifth staff (52-55) continues this pattern. The sixth staff (55-58) shows a continuation of the eighth-note pattern. The seventh staff (58-61) continues the eighth-note pattern. The eighth staff (61-64) continues the eighth-note pattern. The ninth staff (64-67) continues the eighth-note pattern. The tenth staff (67-70) continues the eighth-note pattern. At measure 73, the tempo changes to 'Largo' and the performance instruction 'Tutti' is indicated. The eleventh staff (73-76) begins with a long rest followed by a melodic line. The twelfth staff (76) continues this melodic line and ends with a double bar line.

## [3.] Presto



56 *Tutti*

61

66 *Solo*

71

76

80 *Tutti*

84 *Solo*

89

96 *Tutti*

102

107 *Piano*

The image shows a page of musical notation for the Violino Primo Principale part of Vivaldi's Concerto a Cinque RV364. The page is numbered 6. The music is in G minor (one flat) and 4/4 time. The score is divided into measures, with measure numbers 56, 61, 66, 71, 76, 80, 84, 89, 96, 102, and 107 marked at the beginning of their respective staves. The dynamics are indicated by the words *Tutti*, *Solo*, and *Piano*. The notation includes eighth notes, sixteenth notes, and slurs. There are also some accidentals, such as a flat sign in measure 71 and a double flat sign in measure 89.