

TO INEZ ALLISON

# Why did I love false Flora.

WORDS AND MUSIC

BY

W.B.

Published by HILBUS & HITZ, MUSIC DEPOT, Washington D.C.

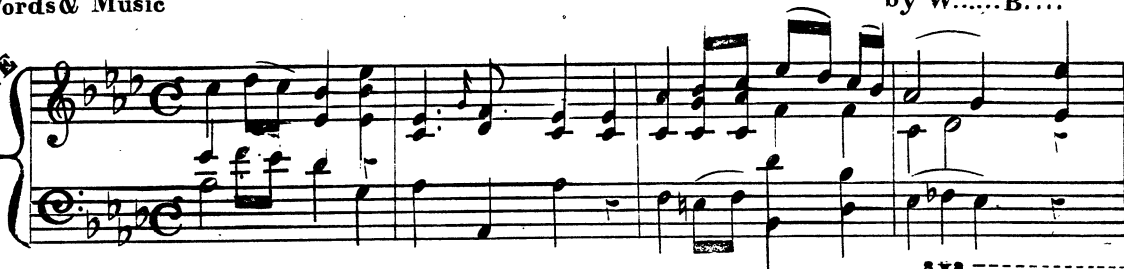
Entered according to Act of Congress by Hilbus & Hitz in the year 1885 in the Clerk's office of the District of Columbia.

# WHY DID I LOVE FALSE FLORA

Words & Music

by W.....B....

ANDANTE



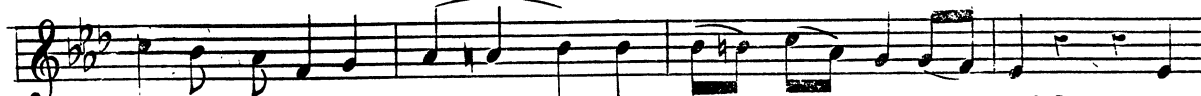
1<sup>st</sup> vers Why did I love false Flora.... for she was false as fa ir Oh



2<sup>nd</sup> vers Why were her cheeks like Ro...ses. Why was her neck so white Oh



had I been true to No....rah I should not now des..pair. She.s



why was her breath like Po.....sies and why her eyes so bright. Sure



left me one sad to...ken; a heart that's al..most bro...ken



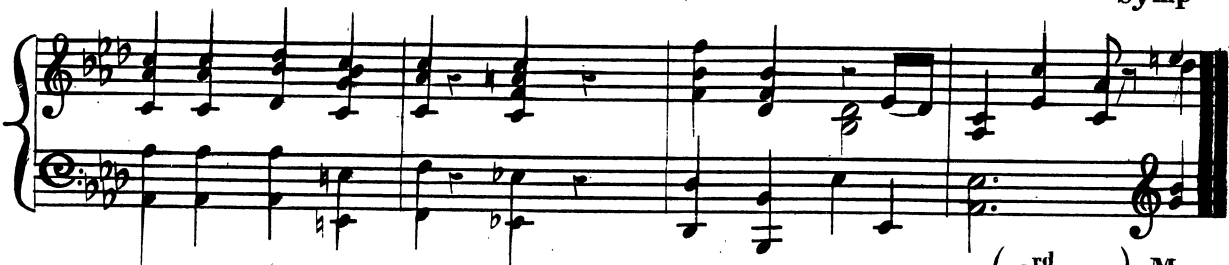
Nature's wrong in gi...ving such beauties for de...ceiv...ving



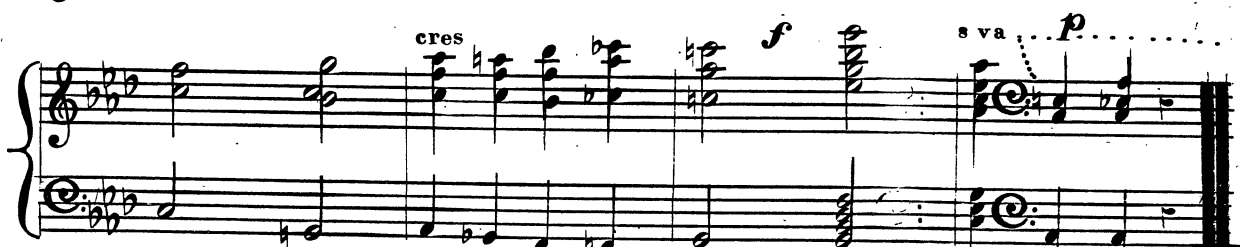
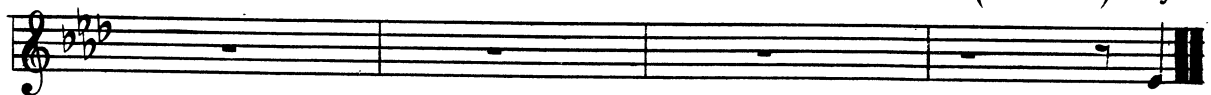
had i been true to No...rah I should not now despair.



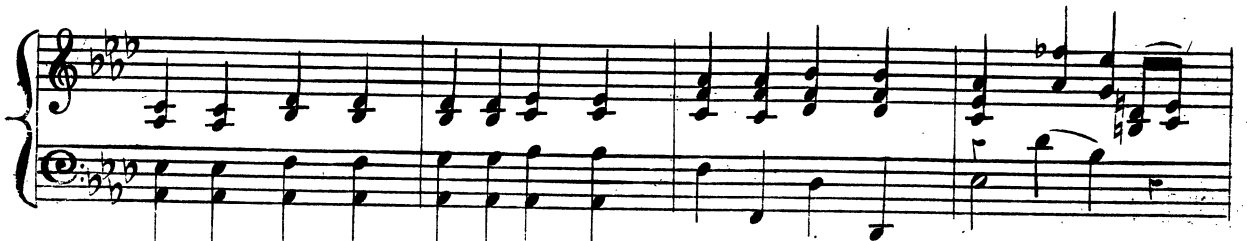
Symp



(3rd vers) My



dream now of Love is O ver and with it all life's charms, I'd have



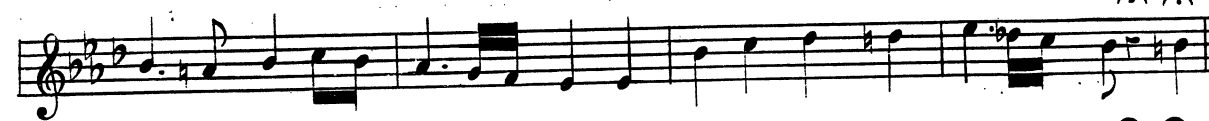
34

why did i love false flora

found if a con..stant Lo....ver sweet peace on No rahs arms. But



she a las lies slee....ping, Un conscions of my wee ping. Ah



had I been true to No rah I should not now des pair.



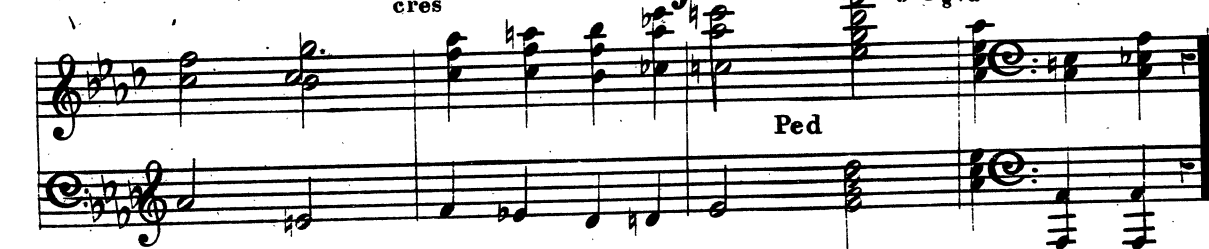
ad Lib

sym



cres

*ff* *va* *f* *p* Ritard



Ped