

COURANTE

(from: *Terpsichore*, TMA 86 - 1612)
for Oboe & Harpsichord

Score (01':05")

Pierre-Francois Caroubel (1556 - 1615)
Arr. Michel Rondeau

Allegretto ♩ = 60

Oboe

Harpsichord

Detailed description: This system contains the first nine measures of the piece. The Oboe part is written in a treble clef with a 3/8 time signature. It begins with a repeat sign, followed by a series of eighth and sixteenth notes, including a triplet of sixteenth notes. The Harpsichord part is written in a grand staff (treble and bass clefs). The right hand plays chords and single notes, while the left hand provides a bass line with eighth and sixteenth notes. The key signature has one sharp (F#).

Ob.

Hpschd.

Detailed description: This system contains measures 10 through 21. Measure 10 is marked with a '10' and a sharp sign. The Oboe part features a first ending (1.) and a second ending (2.) starting at measure 17. The Harpsichord part continues with its accompaniment, including some sixteenth-note patterns in the right hand. The piece concludes with a fermata over the final note of the Oboe part.

Ob.

Hpschd.

Detailed description: This system contains measures 22 through 31. Measure 22 is marked with a '22'. Similar to the previous system, it includes first and second endings for the Oboe part starting at measure 27. The Harpsichord part provides accompaniment throughout. The piece ends with a fermata over the final note of the Oboe part.

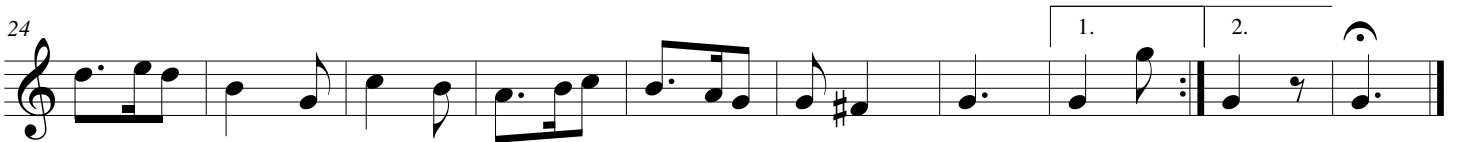
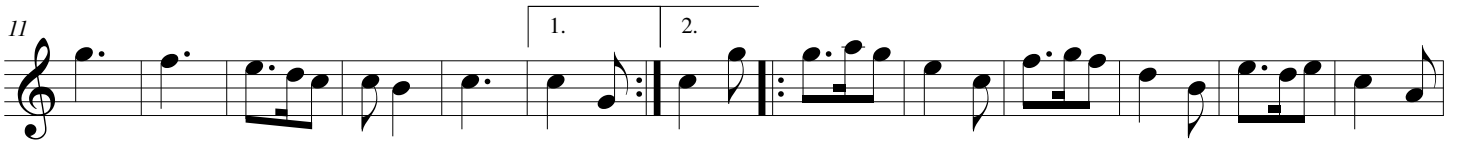
COURANTE

(from: *Terpsichore*, TMA 86 - 1612)
for Oboe & Harpsichord

Oboe

Pierre-Francois Caroubel (1556 - 1615)
Arr. Michel Rondeau

Allegretto ♩. = 60



COURANTE

(from: *Terpsichore*, TMA 86 - 1612)
for Oboe & Harpsichord

Pierre-Francois Caroubel (1556 - 1615)
Arr. Michel Rondeau

Harpsichord

Oboe

Allegretto ♩ = 60

Harpsichord

Ob.

Hpschd.

Ob.

Hpschd.