

Frühlingsmorgen.

Symphonische Dichtung.

Philipp Scharwenka Op. 87.

1.

1^{tes} Fagott.

Mäßig bewegt.

The musical score for the first Bassoon part consists of ten staves. The key signature is two flats (B-flat and E-flat). The tempo is marked 'Mäßig bewegt'. The score includes various dynamic markings: *f*, *ff*, *mf*, *cresc.*, *molto cresc.*, and *molto*. There are also performance instructions: *A.* (first ending), *B.* (second ending), and *cresc.* (crescendo). The music features a variety of rhythmic patterns, including eighth and sixteenth notes, and rests. The score is written in a clear, handwritten style.

E a Tempo.

Handwritten musical score for a single instrument, featuring multiple staves with notes, rests, and dynamic markings. The score includes various performance instructions such as *un poco più mosso rit.*, *molto cresc.*, *dim*, *es crescendo*, *molto cresc.*, *sempre f.*, and *un poco rall.*. The piece concludes with a 3/4 time signature.

Key markings and instructions include:

- un poco più mosso rit.*
- molto cresc.*
- dim*
- es crescendo*
- molto cresc.*
- dim*
- es cresc.*
- molto cresc.*
- molto cresc.*
- sempre f.*
- un poco rall.*

M. Richtiges als züner.

Stiller.

riten.

Musical staff with notes and rests.

Wieder sehr ruhig

Wieder stiller

Musical staff with notes and rests.

Musical staff with notes and rests. Includes dynamic markings *riten.*, *ppp.*, and *a tempo*.

Musical staff with notes and rests. Includes dynamic marking *a tempo*.

tränquillo.

molto riten.

Musical staff with notes and rests.

Langsam mit großer Empfindung.

Musical staff with notes and rests. Includes dynamic markings *ppp cresc.* and *f*.

Musical staff with notes and rests. Includes dynamic markings *cresc.* and *ppp*.

Musical staff with notes and rests. Includes dynamic markings *ppp*, *molto cresc.*, *f*, *riten*, *fp*, and *molto cresc.*

Musical staff with notes and rests. Includes dynamic markings *f*, *riten*, *fp*, *cresc.*, and *cresc.*

Musical staff with notes and rests. Includes dynamic markings *riten*, *fp*, *molto a poco cresc.*, and *cresc.*

Musical staff with notes and rests. Includes dynamic markings *riten*, *fp*, *molto a poco cresc.*, and *cresc.*

Musical staff with notes and rests. Includes dynamic markings *riten*, *fp*, *molto a poco cresc.*, and *cresc.*

Musical staff with notes and rests. Includes dynamic markings *riten*, *fp*, *molto a poco cresc.*, and *cresc.*

Musical staff with notes and rests. Includes dynamic markings *riten*, *fp*, *molto a poco cresc.*, and *cresc.*

Wieder ganz allmählig beschleunigt.

Handwritten musical notation on a single staff. It begins with a treble clef, a key signature of two flats (B-flat and E-flat), and a common time signature. The notes are mostly quarter and eighth notes with slurs. Dynamics include *ff* at the start, *sf* in the middle, and *f* towards the end.

Handwritten musical notation on a single staff. It continues with a treble clef, two flats key signature, and common time. The notes are mostly quarter notes with slurs. Dynamics include *sf*, *f*, *sf*, *f*, and *molto* at the end.

Handwritten musical notation on a single staff. It begins with a treble clef, two flats key signature, and common time. The notes are mostly quarter notes with slurs. Dynamics include *ff*, *sf*, *fin. dim.*, and *ff*. There is a large 'R' written above the staff.

Handwritten musical notation on a single staff. It begins with a treble clef, two flats key signature, and common time. The notes are mostly quarter notes with slurs. Dynamics include *ritex.*, *ritard.*, and *sf*. There is a large 'U' written above the staff.

Handwritten musical notation on a single staff. It begins with a treble clef, two flats key signature, and common time. The notes are mostly quarter notes with slurs. Dynamics include *sf*, *sf*, *sf*, and *sf*. The tempo marking *Mäßig bewegt, wie zu Anfang* is written above the staff.

Handwritten musical notation on a single staff. It continues with a treble clef, two flats key signature, and common time. The notes are mostly quarter notes with slurs. Dynamics include *sf*, *sf*, *sf*, and *sf*.

Handwritten musical notation on a single staff. It continues with a treble clef, two flats key signature, and common time. The notes are mostly quarter notes with slurs. Dynamics include *sf*, *sf*, *sf*, and *sf*.

Handwritten musical notation on a single staff. It continues with a treble clef, two flats key signature, and common time. The notes are mostly quarter notes with slurs. Dynamics include *sf* and *f*. There is a '2.' written below the staff.

Handwritten musical notation on a single staff. It begins with a treble clef, two flats key signature, and common time. The notes are mostly quarter notes with slurs. Dynamics include *f* and *dim.*

Handwritten musical notation on a single staff. It begins with a treble clef, two flats key signature, and common time. The notes are mostly quarter notes with slurs. Dynamics include *f*, *sf*, and *eser.*. The tempo marking *solus et espr.* is written above the staff.

Handwritten musical notation on a single staff. It continues with a treble clef, two flats key signature, and common time. The notes are mostly quarter notes with slurs. Dynamics include *dim. sf* and *eser.*

Handwritten musical notation on a single staff. It continues with a treble clef, two flats key signature, and common time. The notes are mostly quarter notes with slurs. Dynamics include *eser.*, *dim. sf*, *eser.*, and *mf. eser.*

V

f *dim.* *dim.*

ff *sf* *sf* *sf* *sf*

f *sf*

III

pp *f*

Brausche

f *sf*

molto esp.

f *sf*

espr.

f *sf*

dim.

p *sf* *f*

espr.

f *sf*

f *espr.* *f* *espr.* *f*

f *Ha* *f*

Viol. 1.

f *sf*

6.

Bb

Cc

molto cresc. *sf* *sf* *fp* *molto cresc.*

Da tempo.

un poco rit.

fz. *dim.* *pp* *fp* *cresc.*

cresc. *fz.* *piu cresc.* *sf*

pp *fp* *cresc.*

fz. *molto cresc.* *sf* *molto cresc.* *sf* *molto cresc.*

fz. *sf* *sf* *fz. o sempre. piu cresc.*

ritando

tranquillo.

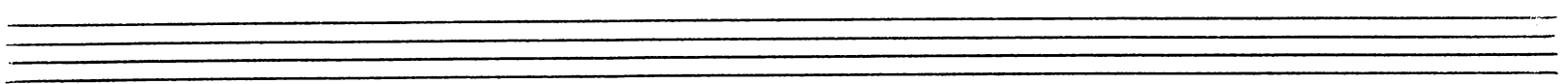
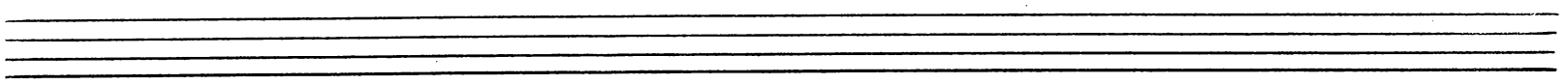
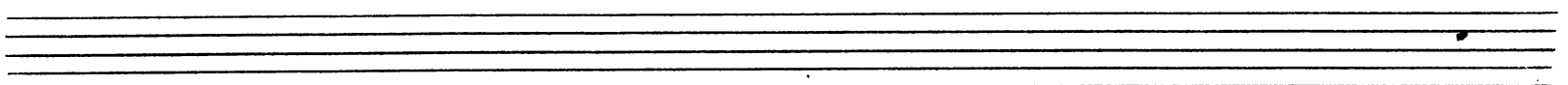
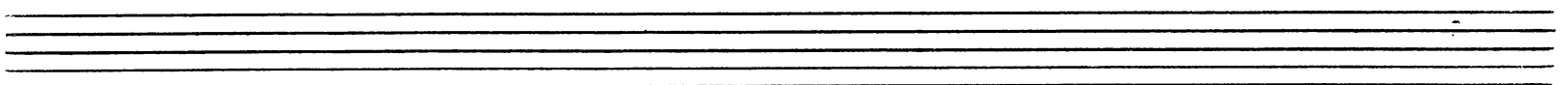
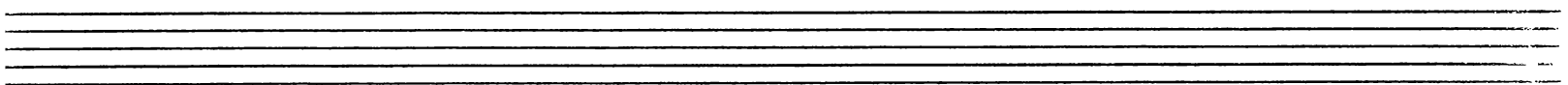
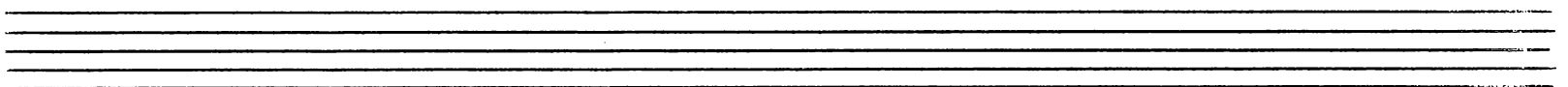
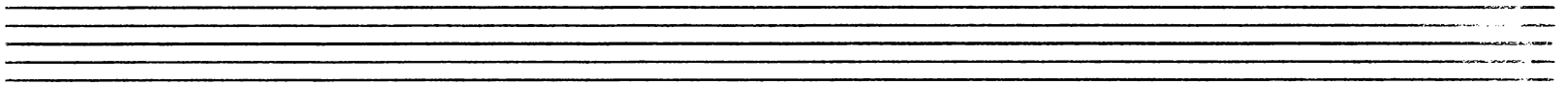
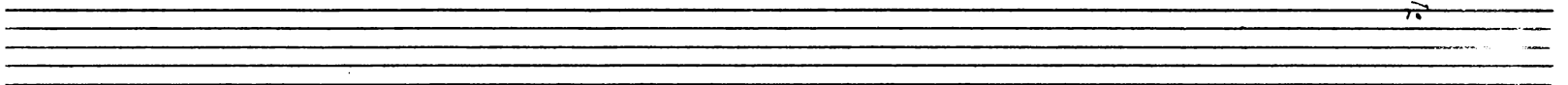
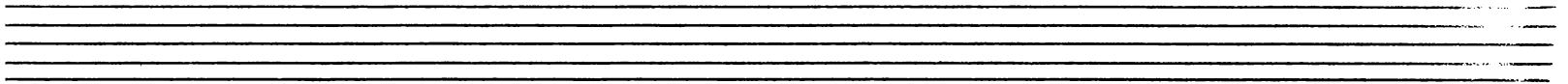
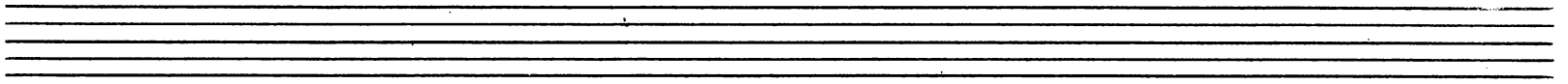
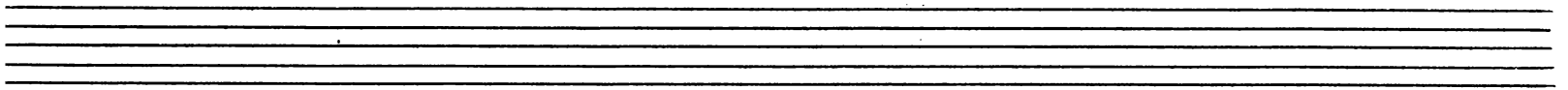
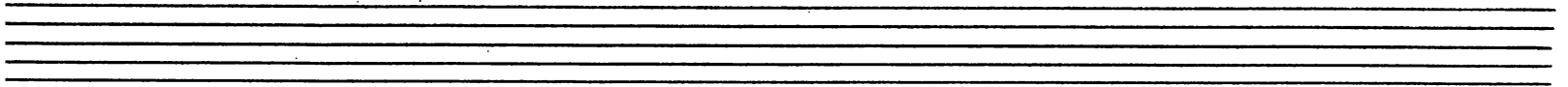
pp *fp* *cresc.* *pp*

Handwritten musical notation on a single staff. It begins with a treble clef, a key signature of two flats (B-flat and E-flat), and a common time signature. The notation includes several measures with notes, some beamed together, and some with slurs. Dynamic markings include *fp* (for *fortissimo*) and *pp* (for *pianissimo*). The instruction *piu calando.* is written above the staff.

Handwritten musical notation on a single staff. It begins with a bass clef, a key signature of two flats, and a common time signature. The notation includes several measures with notes, some with slurs. Dynamic markings include *mp* (for *mezzo-piano*) and *pp*. The instruction *molto tranquillo.* is written above the staff, and *ritard.* (for *ritardando*) is written below the staff. There is also a marking *Fag. II sempre pp* below the staff.

Handwritten musical notation on a single staff. It begins with a treble clef, a key signature of two flats, and a common time signature. The notation includes several measures with notes and slurs. A dynamic marking of *pp* is present at the beginning.

A series of ten empty musical staves, each consisting of five horizontal lines, provided for further notation.



Frühlingsregen.

Symphonische Dichtung.

Philipp Scharwenka Op. 87.

2^{ter} Fagott.

Mäßig bewegt.

Fag. I

10

15

a tempo.

p. e tranquillo.

un poco più rit.

2.

F.

Handwritten musical score for a piece in 12/8 time. The score consists of ten staves of music. The key signature is B-flat major (two flats). The piece begins with a dynamic of *f* and a tempo marking of *Allegro*. The first staff contains a melodic line with a dynamic of *f* and a tempo marking of *Allegro*. The second staff contains a bass line with a dynamic of *pp* and a tempo marking of *Allegro*. The third staff contains a melodic line with a dynamic of *pp* and a tempo marking of *Allegro*. The fourth staff contains a bass line with a dynamic of *f* and a tempo marking of *Allegro*. The fifth staff contains a melodic line with a dynamic of *pp* and a tempo marking of *Allegro*. The sixth staff contains a bass line with a dynamic of *pp* and a tempo marking of *Allegro*. The seventh staff contains a melodic line with a dynamic of *f* and a tempo marking of *Allegro*. The eighth staff contains a bass line with a dynamic of *f* and a tempo marking of *Allegro*. The ninth staff contains a melodic line with a dynamic of *f* and a tempo marking of *Allegro*. The tenth staff contains a bass line with a dynamic of *pp* and a tempo marking of *Allegro*. The score includes various dynamics such as *f*, *pp*, *sfz*, *mf*, and *ff*. Performance instructions include *molto cresc.*, *dim.*, *cresc.*, *sempre f*, *un poco rall.*, *M. Più figo al zúvor.*, *ffuallor.*, *riten.*, *N. Alindor pefr nífig.*, and *Alindor pfuallor.*

This is a handwritten musical score for a piece titled "Ruff." The score is written on ten staves, with the first two staves in the bass clef and the remaining eight in the treble clef. The key signature is B-flat major (two flats). The score includes various musical notations such as notes, rests, slurs, and dynamic markings. Handwritten annotations in German provide performance instructions.

Annotations and Performance Instructions:

- ritard.* (ritardando) - appears on the first and second staves.
- ff* (fortissimo) - appears on the first, second, and third staves.
- molto* - appears on the first staff.
- ritard. zurückfallen.* - appears on the first staff.
- ritard.* - appears on the second staff.
- ff* - appears on the second staff.
- ritard.* - appears on the third staff.
- ff* - appears on the third staff.
- Mäßig bewegt, wie zu Anfang.* (Moderately moved, like at the beginning) - appears on the third staff.
- ff* - appears on the fourth, fifth, sixth, seventh, eighth, and ninth staves.
- ritard.* - appears on the eighth staff.
- ff* - appears on the eighth staff.
- ritard.* - appears on the ninth staff.
- ff* - appears on the ninth staff.
- ritard.* - appears on the tenth staff.
- ff* - appears on the tenth staff.

The score concludes with a double bar line on the tenth staff.

Handwritten musical notation on a single staff, featuring various notes, rests, and dynamic markings such as *sf* and *f*.

Handwritten musical notation on a single staff, featuring various notes and rests.

Handwritten musical notation on a single staff, featuring various notes, rests, and dynamic markings such as *sf* and *f*.

Handwritten musical notation on a single staff, featuring various notes, rests, and dynamic markings such as *cresc.* and *sf*.

Handwritten musical notation on a single staff, featuring various notes, rests, and dynamic markings such as *cresc.* and *f*.

Handwritten musical notation on a single staff, featuring various notes, rests, and dynamic markings such as *cresc.* and *sf*.

Handwritten musical notation on a single staff, featuring various notes, rests, and dynamic markings such as *cresc.* and *f*.

Handwritten musical notation on a single staff, featuring various notes, rests, and dynamic markings such as *cresc.* and *f*.

Handwritten musical notation on a single staff, featuring various notes, rests, and dynamic markings such as *cresc.* and *f*.

Handwritten musical notation on a single staff, featuring various notes, rests, and dynamic markings such as *cresc.* and *f*.

Handwritten musical notation on a single staff, featuring various notes, rests, and dynamic markings such as *cresc.* and *f*.

Handwritten musical notation on a single staff, featuring various notes, rests, and dynamic markings such as *cresc.* and *f*.

