

COURANTE

(from: *Terpsichore*, TMA 165 - 1612)
for Oboe and Harpsichord

Score (00':48")

Allegretto ♩ = 59

Michael Praetorius (1571 - 1621)

Arr. Michel Rondeau

Oboe

Harpsichord

Measures 1-8 of the score. The Oboe part begins with a treble clef and a 3/8 time signature. The Harpsichord part is written in a grand staff with treble and bass clefs. The music is in 3/8 time and features a rhythmic pattern of eighth and sixteenth notes.

Ob.

Hpschd.

Measures 9-17 of the score. The Oboe part includes a first and second ending bracketed over measures 11-12. The Harpsichord part continues with its accompaniment. Measure 9 is marked with a '9' at the beginning of the staff.

Ob.

Hpschd.

Measures 18-26 of the score. The Oboe part includes a first and second ending bracketed over measures 20-21. The Harpsichord part continues with its accompaniment. Measure 18 is marked with an '18' at the beginning of the staff.

COURANTE

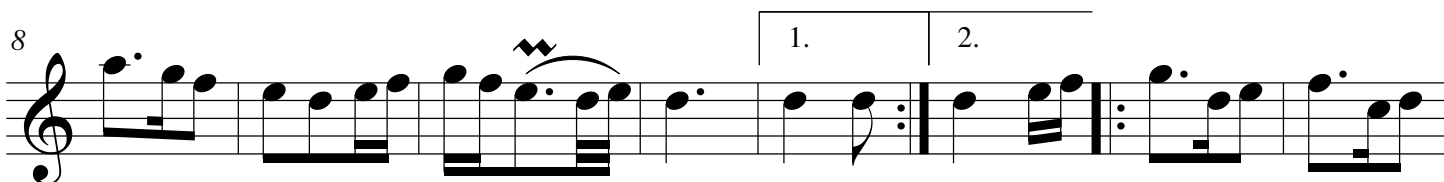
(from: *Terpsichore*, TMA 165 - 1612)
for Oboe and Harpsichord

Oboe

Michael Praetorius (1571 - 1621)

Arr. Michel Rondeau

Allegretto ♩ = 59



COURANTE

(from: *Terpsichore*, TMA 165 - 1612)
for Oboe and Harpsichord

Michael Praetorius (1571 - 1621)
Arr. Michel Rondeau

Harpsichord

Oboe

Allegretto ♩ = 59

Harpsichord

Ob.

Hpschd.

Ob.

Hpschd.