

Concerto per archi e Basso Continuo

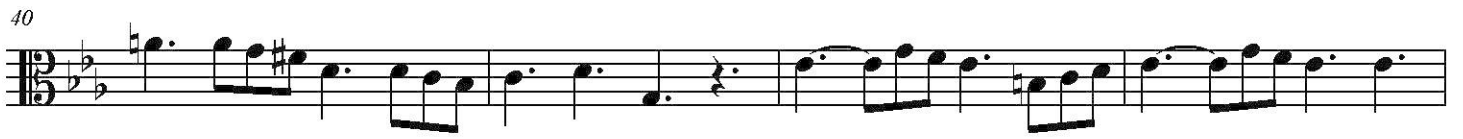
RV 120

I. Allegro non molto

Antonio Vivaldi (1678 - 1741)

Viola

The image displays the musical score for the Viola part of the first movement of Vivaldi's Concerto per archi e Basso Continuo, RV 120. The score is written in bass clef with a key signature of one flat (B-flat) and a time signature of 12/8. The music is divided into ten systems, each starting with a measure number: 4, 8, 12, 16, 20, 23, 27, 30, and 33. The notation includes various rhythmic values such as eighth and sixteenth notes, often beamed together, and rests. The piece concludes with a final double bar line at the end of the tenth system.



II. Largo



III. Allegro

7

11

14

19

25

29

33

38

43

48

52

56

f

p

f

p