

Violoncello

Roundelay 2002

note: the microtones are inflections not tempered quarter-tones, i.e. these notes should be played slightly sharper or flatter as necessary.

3'05" ↔ 3'35" 3'25" ↔ 3'55"

8'15" ↔ 8'55" 8'45" ↔ 9'25"

11'05" ↔ 11'40" 11'30" ↔ 12'05"

15'00" ↔ 15'45" 15'35" ↔ 16'20"

21'40" ↔ 22'55" 22'45" ↔ 24'00"

25'35" ↔ 26'30" 26'20" ↔ 27'15"

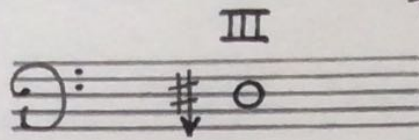
32'15" ↔ 32'50" 32'40" ↔ 33'15"

35'45" ↔ 36'05" 35'55" ↔ 36'15"

39'10" ↔ 39'35" 39'25" ↔ 39'50"

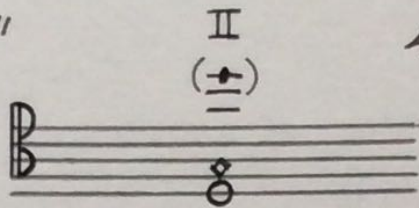
Violoncello

41'20" ↔ 41'40"



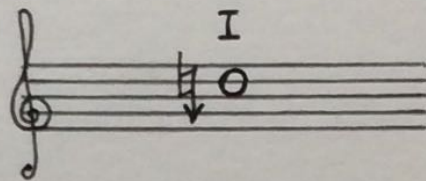
41'30" ↔ 41'50"

43'40" ↔ 45'00"



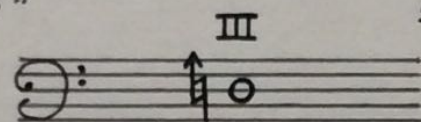
44'50" ↔ 46'10"

47'35" ↔ 47'55"



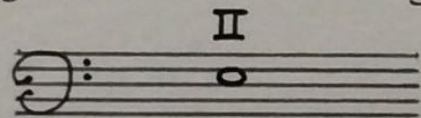
47'45" ↔ 48'05"

52'35" ↔ 53'05"



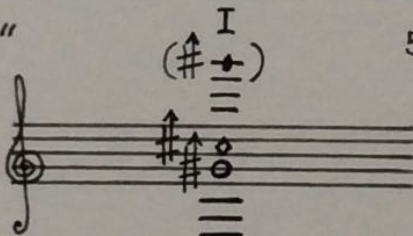
52'55" ↔ 53'25"

54'50" ↔ 55'35"



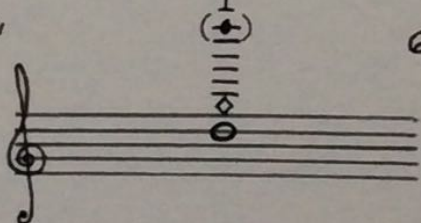
55'25" ↔ 56'10"

58'10" ↔ 58'35"



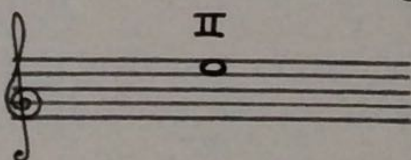
58'25" ↔ 58'50"

61'15" ↔ 62'10"



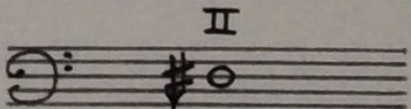
62'00" ↔ 62'55"

63'45" ↔ 65'00"



64'50" ↔ 66'05"

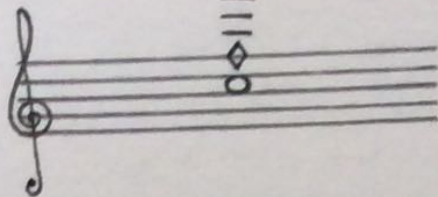
73'30" ↔ 73'50"



73'40" ↔ 74'00"

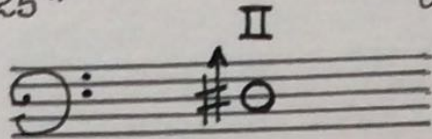
Violoncello

77'15" ↔ 78'10"



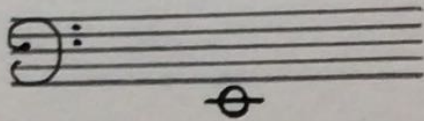
78'00" ↔ 78'55"

81'50" ↔ 82'25"



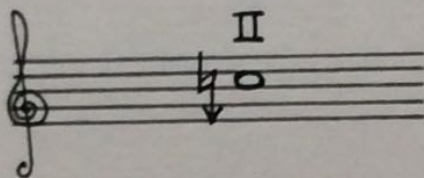
82'15" ↔ 82'50"

84'10" ↔ 84'35"



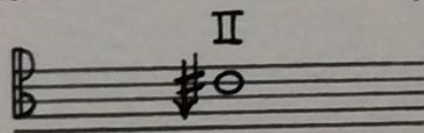
84'25" ↔ 84'50"

91'20" ↔ 92'45"



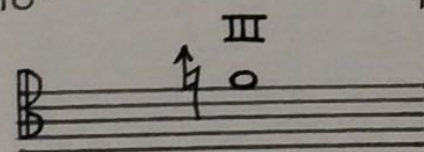
92'35" ↔ 94'00"

96'55" ↔ 97'15"



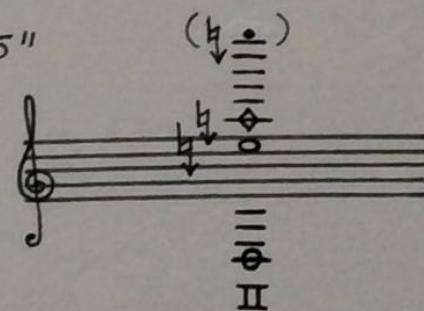
97'05" ↔ 97'25"

98'35" ↔ 99'10"



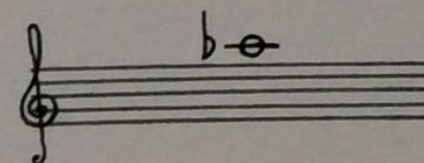
99'05" ↔ 99'40"

100'20" ↔ 101'45"



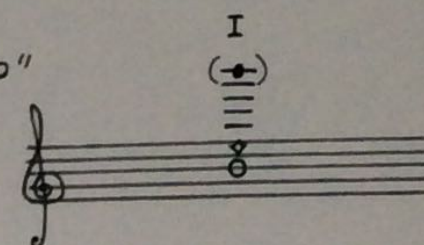
101'35" ↔ 103'00"

103'40" ↔ 105'00"



104'50" ↔ 106'10"

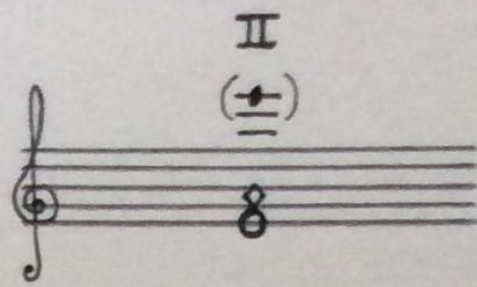
109'55" ↔ 110'30"



110'20" ↔ 110'55"

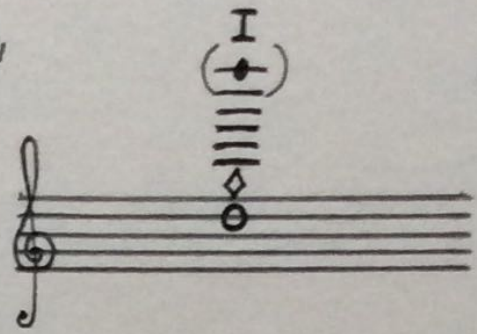
Violoncello

112'35" ↔ 113'05"



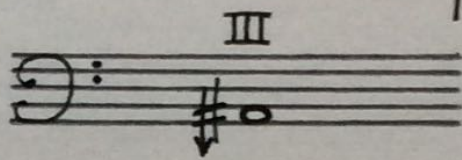
112'55" ↔ 113'25"

113'45" ↔ 114'55"



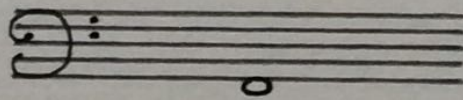
114'05" ↔ 115'15"

115'35" ↔ 116'10"



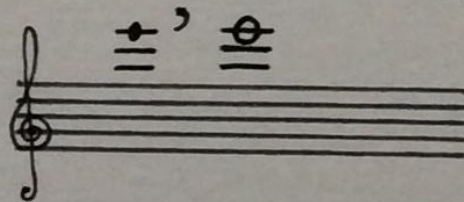
116'00" ↔ 116'35"

116'55" ↔ 117'15"



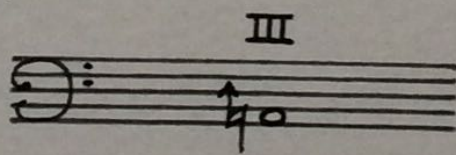
117'05" ↔ 117'25"

118'35" ↔ 119'10"



119'05" ↔ 119'40"

120'20" ↔ 121'45"



121'35" ↔ 123'00"