

Quartet from Sonata in 3 parts No. 5 in a

Henry Purcell [viola part by R. Bartoli] Z 794

Moderato
Vln. II

Measures 1-5 of the Moderato section. The music is in 3/4 time and begins with a rest. The first note is a quarter note G4, followed by quarter notes A4, B4, and C5. A slur covers measures 2-4, containing quarter notes D5, E5, F5, and G5. Measure 5 contains a quarter note G5, a quarter rest, and a quarter note F5. A dynamic marking *p* is placed below measure 5.

Measures 6-12 of the Moderato section. Measure 6 starts with a quarter note G4, followed by quarter notes A4, B4, and C5. Measure 7 has a quarter note D5, followed by quarter notes E5, F5, and G5. Measure 8 has a quarter note G5, followed by quarter notes F5, E5, and D5. Measure 9 has a quarter note C5, followed by quarter notes B4, A4, and G4. Measure 10 has a quarter note F4, followed by quarter notes E4, D4, and C4. Measure 11 has a quarter note B3, followed by quarter notes A3, G3, and F3. Measure 12 has a quarter note E3, followed by quarter notes D3, C3, and B2.

Measures 13-17 of the Moderato section. Measure 13 has a quarter note G4, followed by quarter notes A4, B4, and C5. Measure 14 has a quarter note D5, followed by quarter notes E5, F5, and G5. Measure 15 has a quarter note G5, followed by quarter notes F5, E5, and D5. Measure 16 has a quarter note C5, followed by quarter notes B4, A4, and G4. Measure 17 has a quarter note F4, followed by quarter notes E4, D4, and C4.

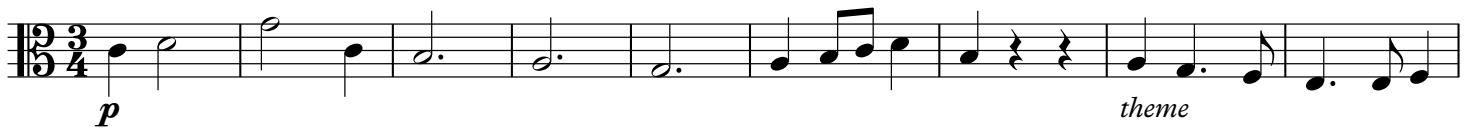
Measures 18-24 of the Moderato section. Measure 18 has a quarter note G4, followed by quarter notes A4, B4, and C5. Measure 19 has a quarter note D5, followed by quarter notes E5, F5, and G5. Measure 20 has a quarter note G5, followed by quarter notes F5, E5, and D5. Measure 21 has a quarter note C5, followed by quarter notes B4, A4, and G4. Measure 22 has a quarter note F4, followed by quarter notes E4, D4, and C4. Measure 23 has a quarter note B3, followed by quarter notes A3, G3, and F3. Measure 24 has a quarter note E3, followed by quarter notes D3, C3, and B2.

Adagio

Measures 1-8 of the Adagio section. Measure 1 has a quarter note G4, followed by quarter notes A4, B4, and C5. Measure 2 has a quarter note D5, followed by quarter notes E5, F5, and G5. Measure 3 has a quarter note G5, followed by quarter notes F5, E5, and D5. Measure 4 has a quarter note C5, followed by quarter notes B4, A4, and G4. Measure 5 has a quarter note F4, followed by quarter notes E4, D4, and C4. Measure 6 has a quarter note B3, followed by quarter notes A3, G3, and F3. Measure 7 has a quarter note E3, followed by quarter notes D3, C3, and B2. Measure 8 has a quarter note G2, followed by quarter notes F2, E2, and D2. A dynamic marking *p* is placed below measure 4.

Measures 9-15 of the Adagio section. Measure 9 has a quarter note G2, followed by quarter notes F2, E2, and D2. Measure 10 has a quarter note C3, followed by quarter notes B2, A2, and G2. Measure 11 has a quarter note F3, followed by quarter notes E3, D3, and C3. Measure 12 has a quarter note B3, followed by quarter notes A3, G3, and F3. Measure 13 has a quarter note E4, followed by quarter notes D4, C4, and B3. Measure 14 has a quarter note G4, followed by quarter notes F4, E4, and D4. Measure 15 has a quarter note B4, followed by quarter notes A4, G4, and F4.

Measures 16-24 of the Adagio section. Measure 16 has a quarter note A4, followed by quarter notes G4, F4, and E4. Measure 17 has a quarter note D5, followed by quarter notes C5, B4, and A4. Measure 18 has a quarter note G5, followed by quarter notes F5, E5, and D5. Measure 19 has a quarter note C6, followed by quarter notes B5, A5, and G5. Measure 20 has a quarter note F6, followed by quarter notes E6, D6, and C6. Measure 21 has a quarter note B6, followed by quarter notes A6, G6, and F6. Measure 22 has a quarter note E7, followed by quarter notes D7, C7, and B7. Measure 23 has a quarter note G7, followed by quarter notes F7, E7, and D7. Measure 24 has a quarter note B7, followed by quarter notes A7, G7, and F7. The section ends with a double bar line and a 3/4 time signature.

1 **Largo [Moderato]**

57 **Grave**

f

63

CANZONA: Allegro

dim. *p*

69

Vln. II

mf

72

cresc.

75

f

79

83

86

90 **[Poco] Adagio**

mf