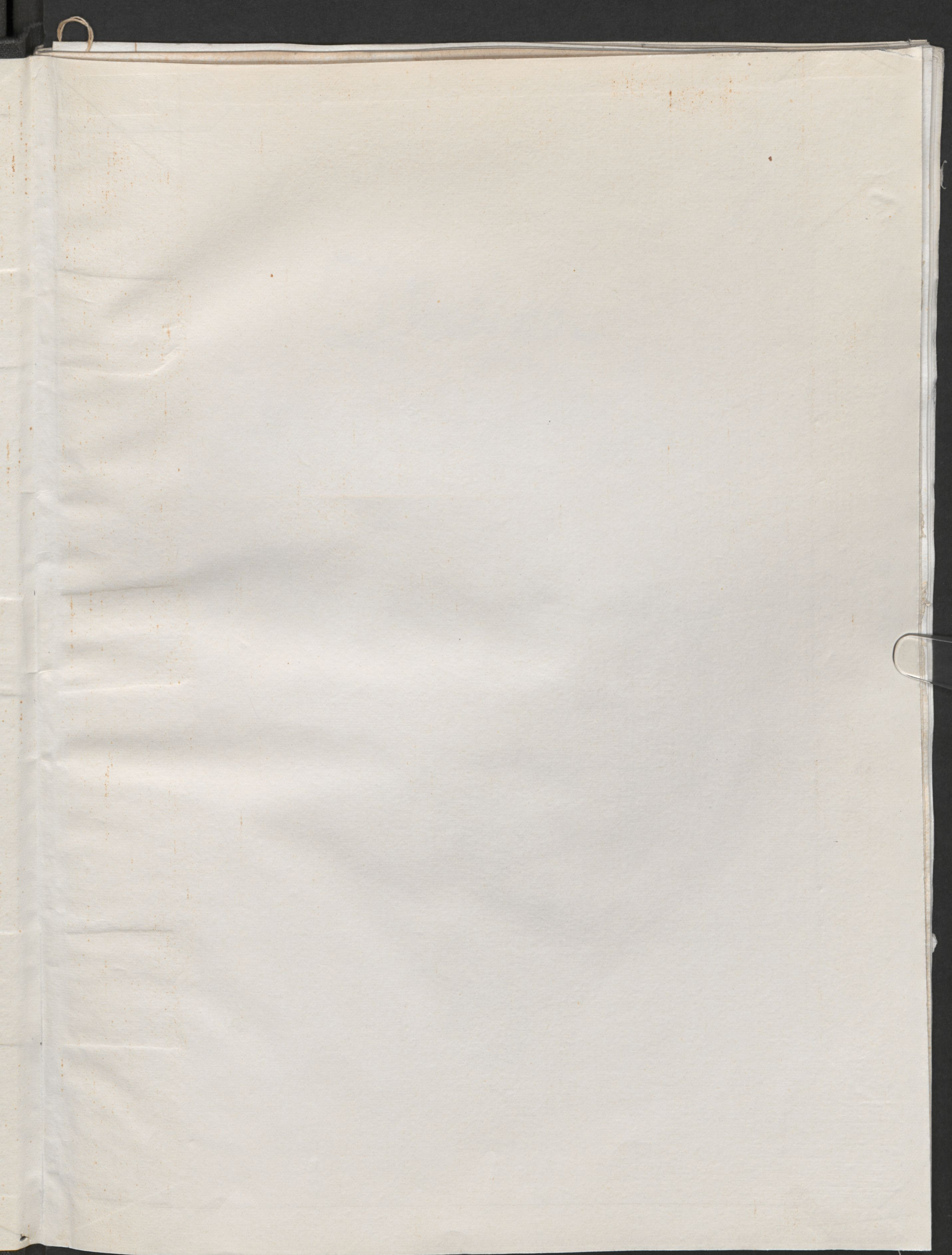


E.M. 47.

RISM





1/10

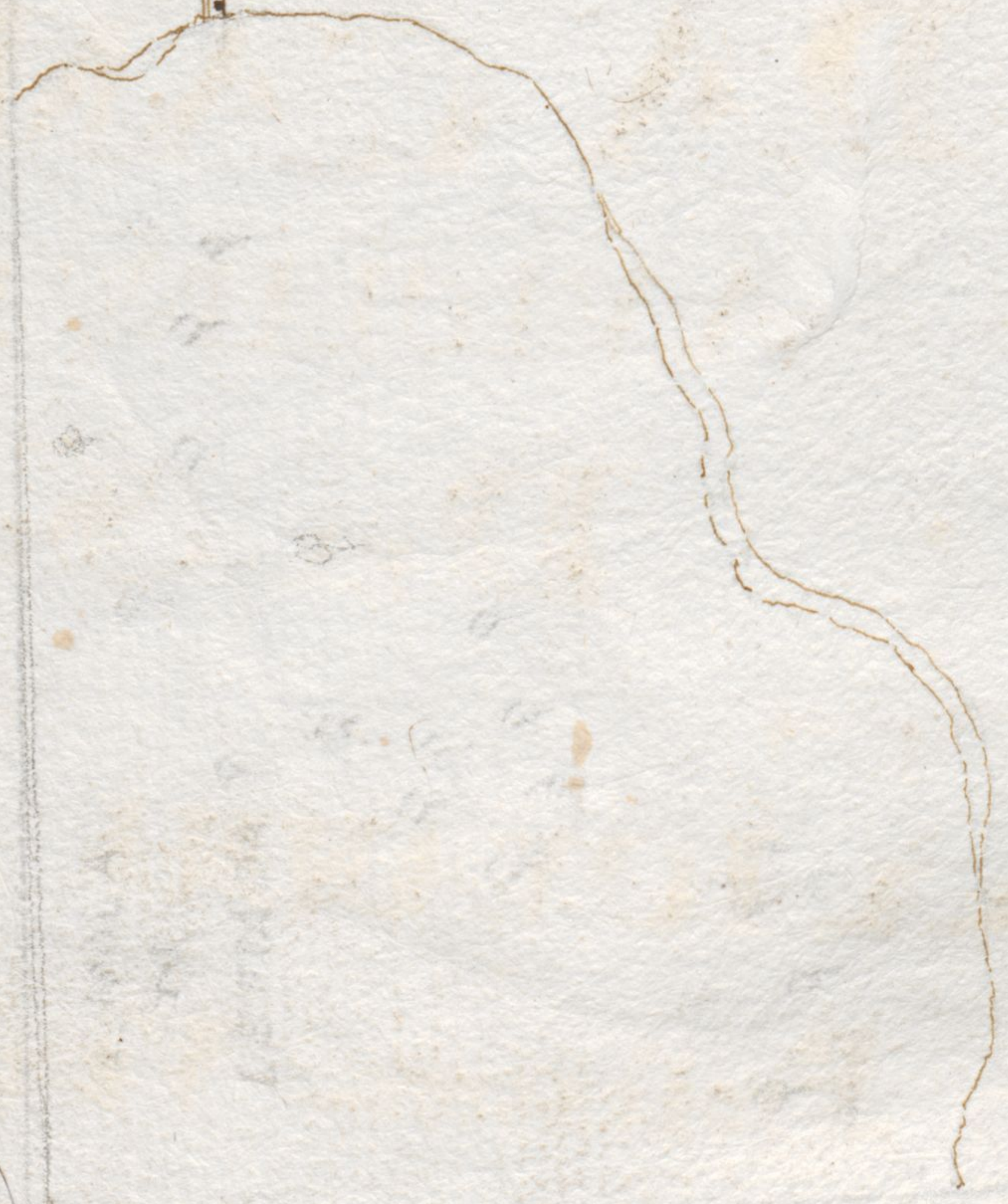
E.M. 47

27
47

Violino
Del Sig.
Donnami Reali

[Large decorative flourish]





Faint, illegible text or markings within the large brown outline, possibly bleed-through from the reverse side of the page.

VIOLINO

SONATE

DA CAMERA

A VIOLINO E BASSO

DEL SIGNOR

GIOVANNI REALI

Professore Veneto

OPERA SECONDA



1701

JOHN ...

...

...

...

...

...

...

...

Sonata I. *grave*

Musical notation on a single staff.

Musical notation on a single staff.

Allegro $\frac{2}{4}$ Musical notation on a single staff.

Musical notation on a single staff.

Musical notation on a single staff.

Musical notation on a single staff.

Musical notation on a single staff.

Musical notation on a single staff.

Musical notation on a single staff.

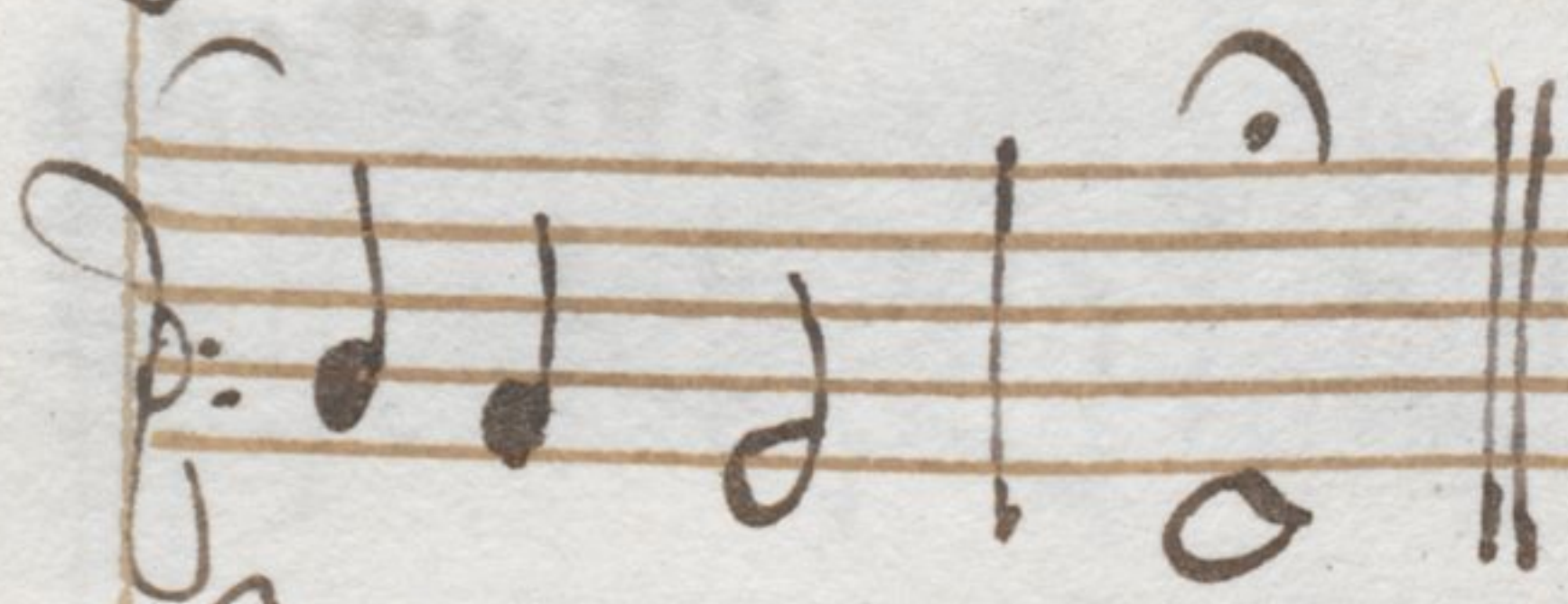

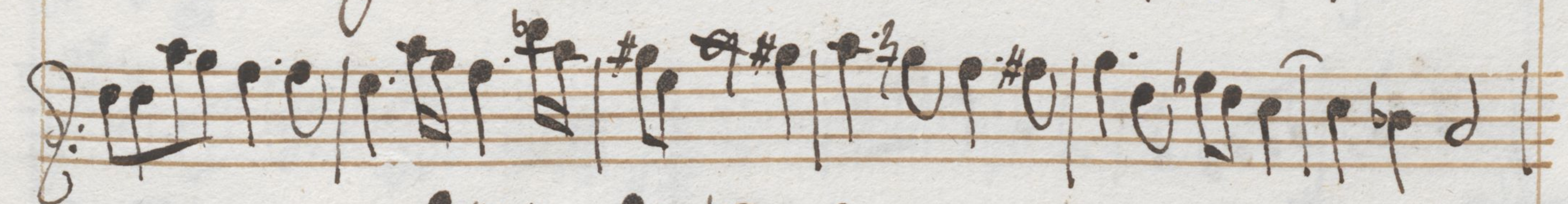
Musical notation on a single staff.

J. S. Bach

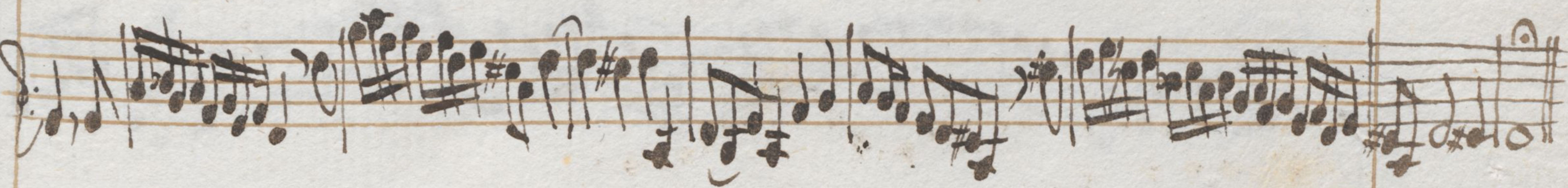
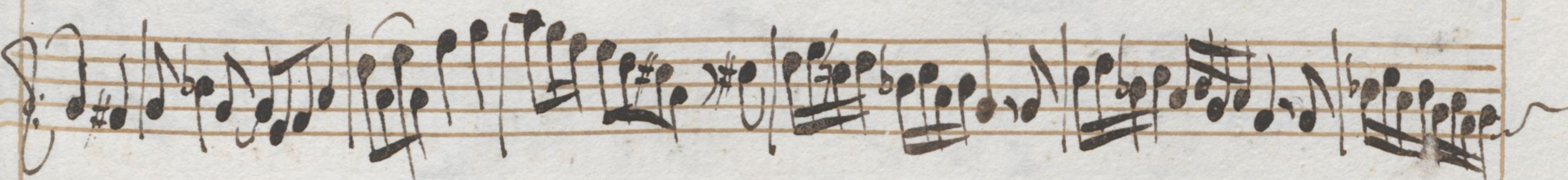
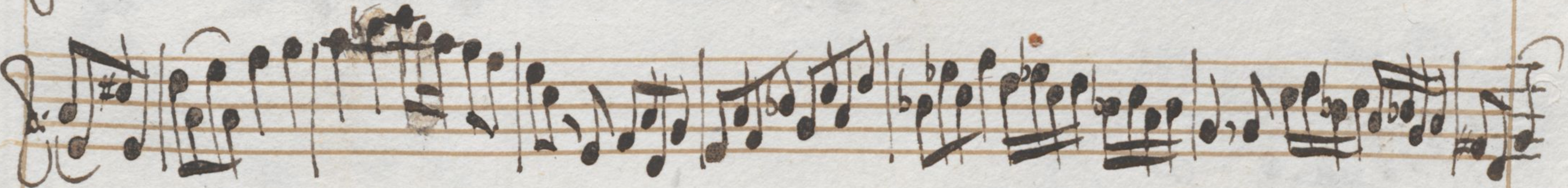
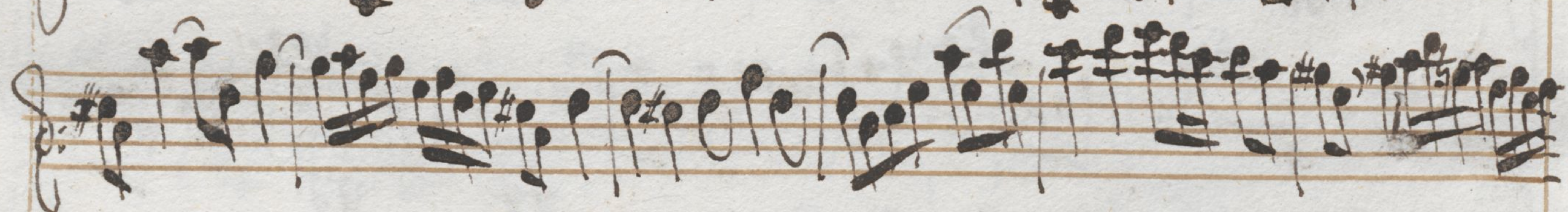
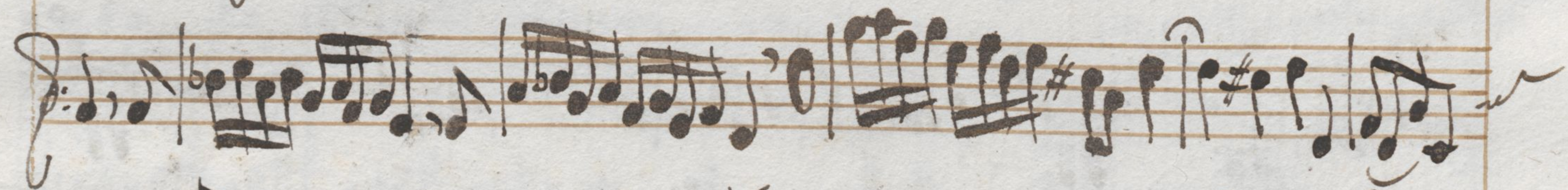
Traue $\frac{3}{4}$ p : 4

Allegro $\frac{3}{8}$ p : 8

Sonata 2: *Andante*



Allero

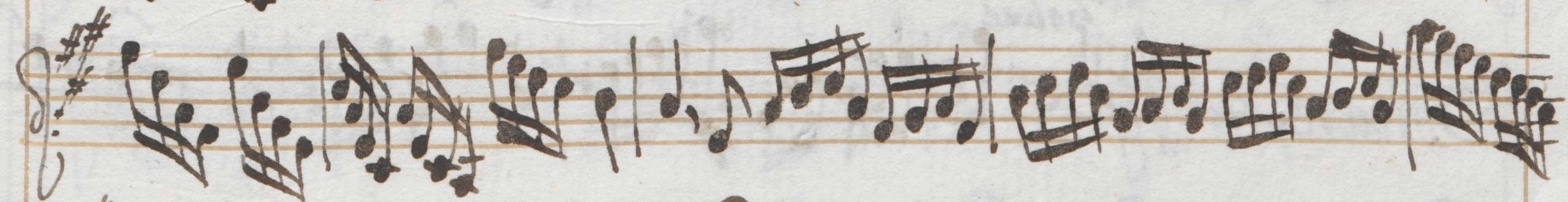
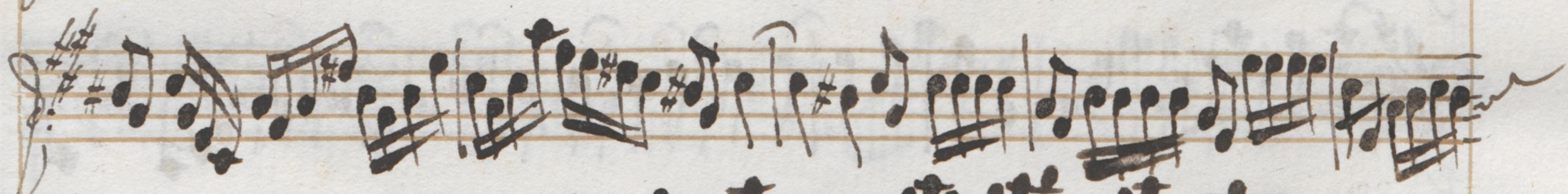
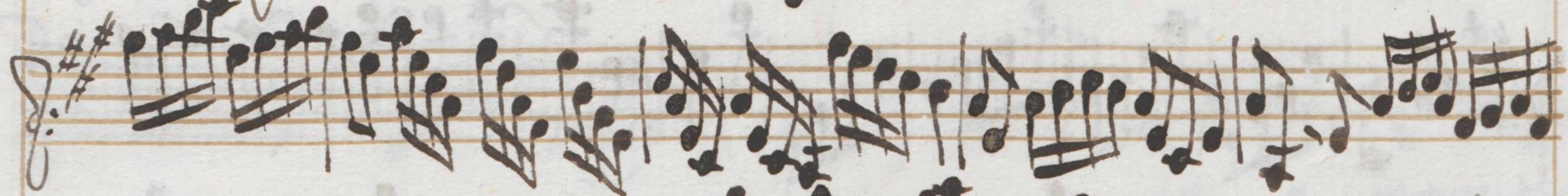
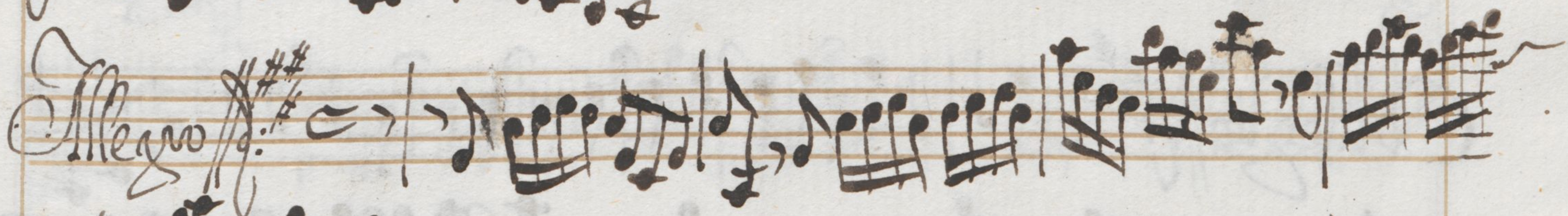
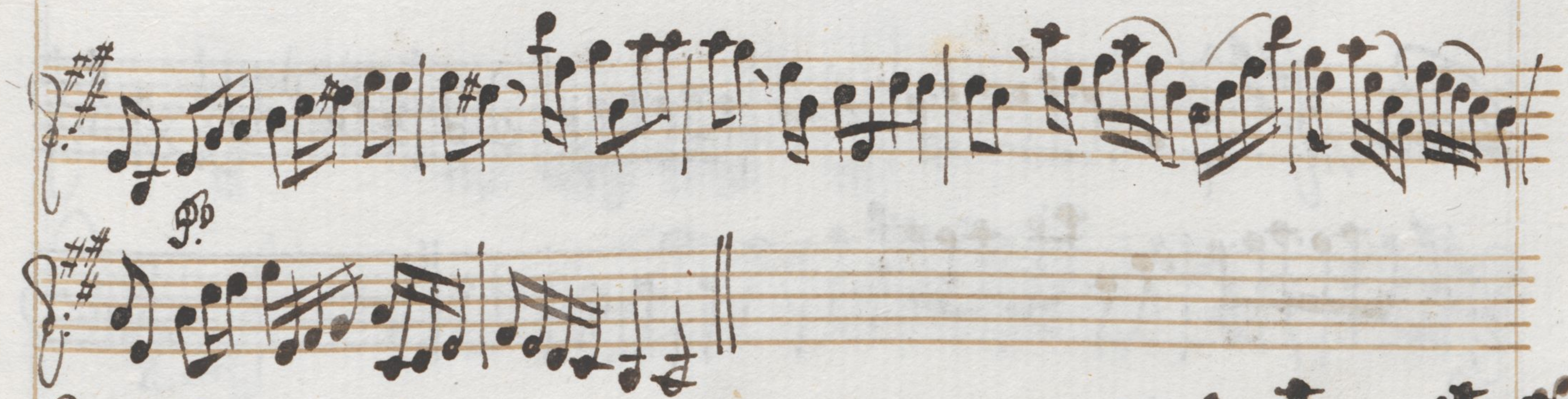


Andante $\text{♩} = 4$

Allegro $\text{♩} = 4$

Andante

Sonata $\text{♩} = 3$



J. J. G. G. G.

Grave $\text{G}^{\#}\text{C}^{\#}$ $\frac{3}{4}$

Allegro $\text{G}^{\#}\text{C}^{\#}$ $\frac{2}{4}$

Sonata $\text{G}^{\flat}\text{C}^{\flat}$ $\frac{3}{4}$ *Andante*

Musical notation on a single staff, featuring a treble clef, a key signature of two flats (B-flat and E-flat), and a 2/4 time signature. The piece concludes with a double bar line and repeat dots.

Allergroß Musical notation on a single staff, featuring a treble clef, a key signature of two flats, and a common time signature. The notation includes various rhythmic values and rests.

Musical notation on a single staff, featuring a treble clef, a key signature of two flats, and a common time signature. The notation includes various rhythmic values and rests.

Musical notation on a single staff, featuring a treble clef, a key signature of two flats, and a common time signature. The notation includes various rhythmic values and rests.

Musical notation on a single staff, featuring a treble clef, a key signature of two flats, and a common time signature. The notation includes various rhythmic values and rests.

Musical notation on a single staff, featuring a treble clef, a key signature of two flats, and a common time signature. The notation includes various rhythmic values and rests.

Musical notation on a single staff, featuring a treble clef, a key signature of two flats, and a common time signature. The notation includes various rhythmic values and rests.

Musical notation on a single staff, featuring a treble clef, a key signature of two flats, and a common time signature. The notation includes various rhythmic values and rests.

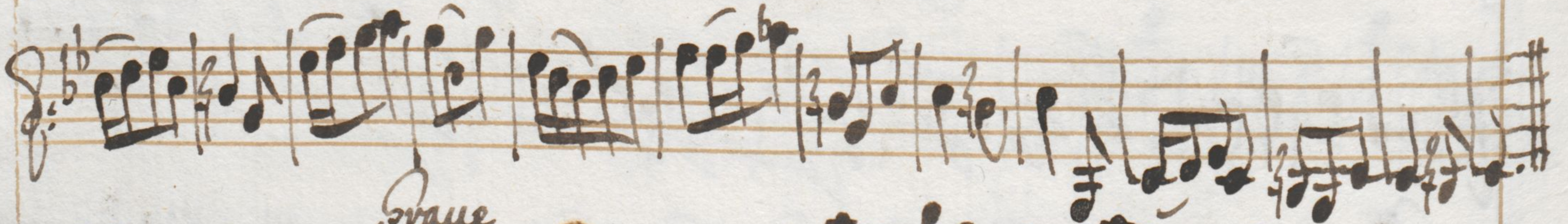
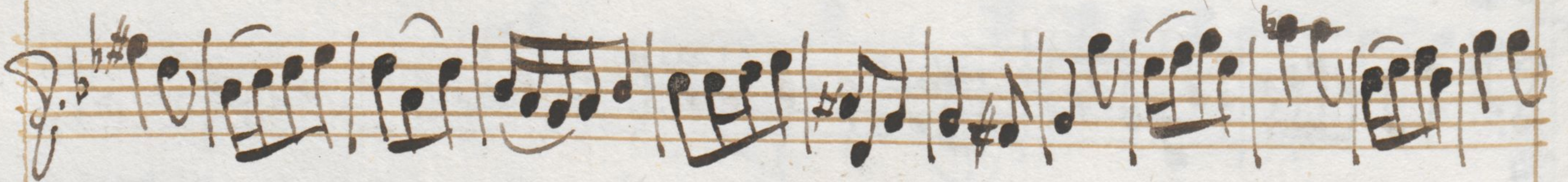
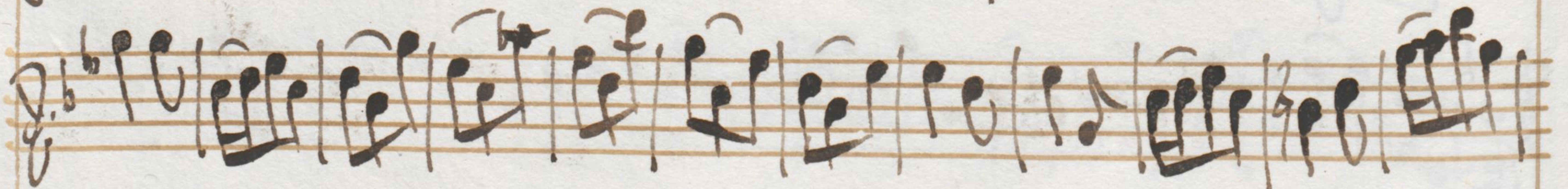
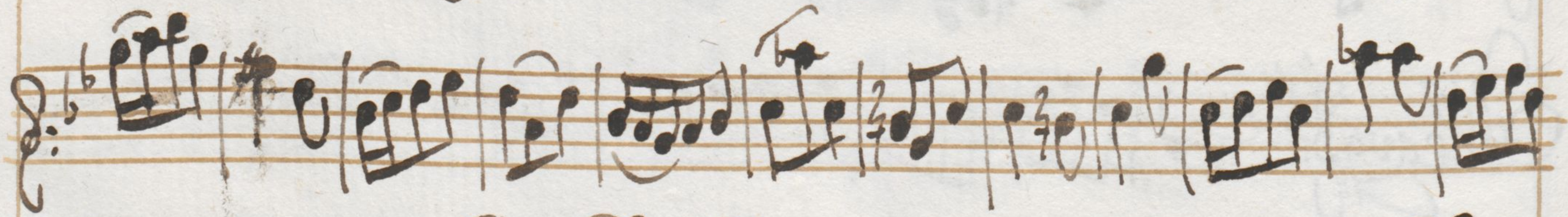
Musical notation on a single staff, featuring a treble clef, a key signature of two flats, and a common time signature. The notation includes various rhythmic values and rests.

Largo Musical notation on a single staff, featuring a treble clef, a key signature of two flats, and a 3/4 time signature. The notation includes various rhythmic values and rests.

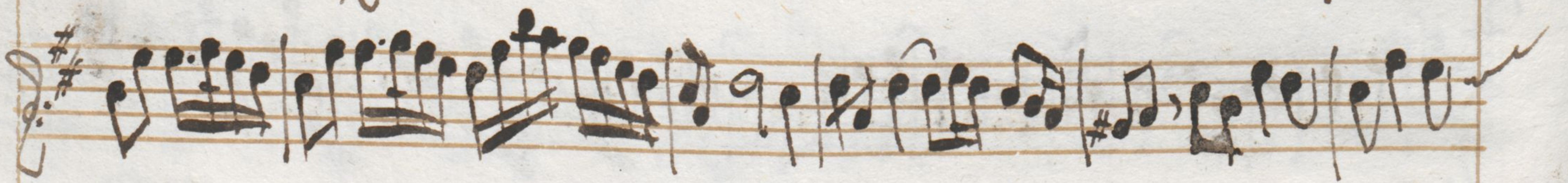
Musical notation on a single staff, featuring a treble clef, a key signature of two flats, and a common time signature. The notation includes various rhythmic values and rests.

Fin. Solo Musical notation on a single staff, featuring a treble clef, a key signature of two flats, and a 3/8 time signature. The notation includes various rhythmic values and rests.

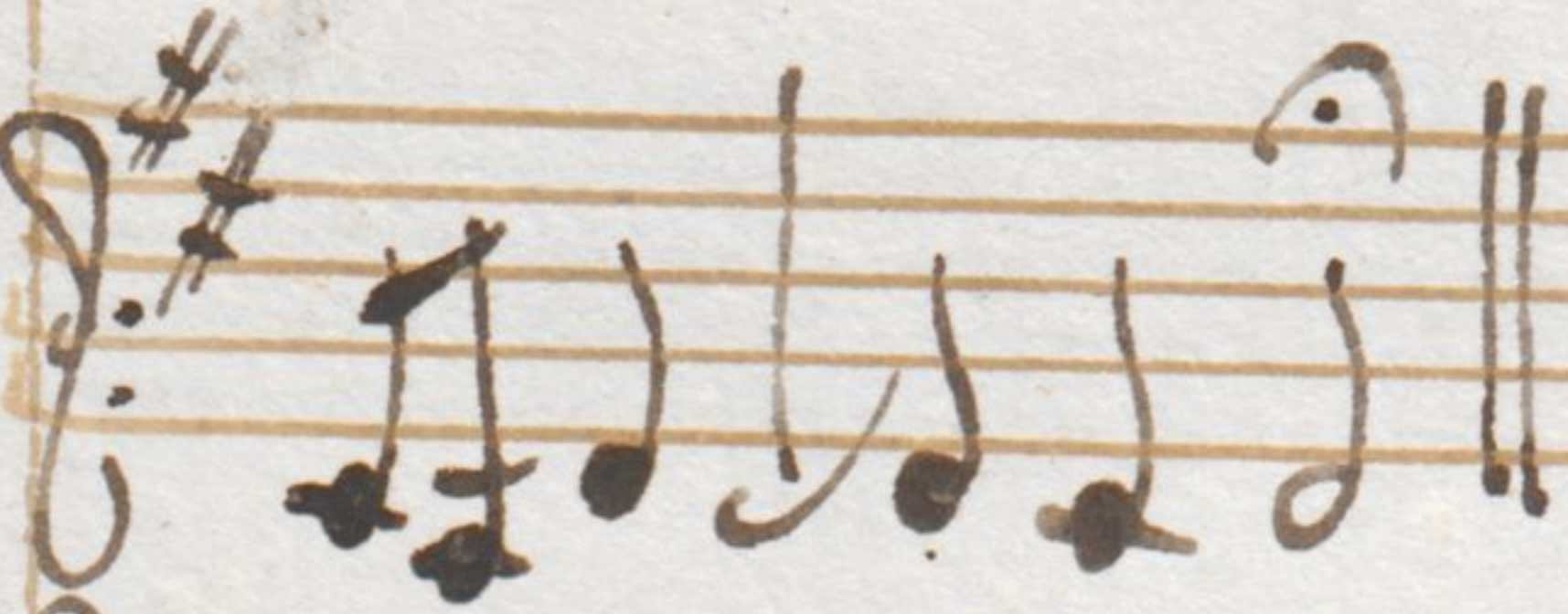
Al Tempo giusto
e Cantabile



Sonata *Andante*



P



Allievo

A handwritten musical score on 12 staves. The notation is in a treble clef with a key signature of two sharps (F# and C#). The music consists of a series of melodic lines with various rhythmic values, including eighth and sixteenth notes, and rests. The handwriting is in dark ink on aged, slightly yellowed paper. The score concludes with a double bar line and the instruction "Segue G. All. =".

Allegro

Handwritten musical score for the first section, featuring ten staves of music in treble clef with a key signature of two sharps (F# and C#) and a common time signature (C). The notation includes various rhythmic values such as eighth and sixteenth notes, often beamed together, and rests. The music is written in a fluid, cursive style characteristic of 18th or 19th-century manuscripts.

Adagio

Sonata

Handwritten musical score for the second section, featuring five staves of music in treble clef with a key signature of two sharps (F# and C#) and a common time signature (C). The notation is more complex, featuring many sixteenth and thirty-second notes, often in dense passages. The handwriting remains consistent with the first section.

This image shows a page of handwritten musical notation on aged, yellowed paper. The score is written in dark ink and consists of approximately 13 staves. The notation includes various musical symbols such as notes, rests, beams, and clefs. The first staff begins with a treble clef and a key signature of one sharp (F#). The second staff contains a double bar line. The third staff is marked with the tempo instruction "Allegro" in a cursive hand. The fourth and fifth staves feature dense, rapid passages of music. The sixth staff begins with a new tempo instruction, "Tutti", written in a similar cursive hand. The final two staves conclude the piece with a double bar line and a decorative flourish. The paper shows signs of age, including some staining and a small metal fastener on the right edge.

Allegro 6/8

Handwritten musical score for the first section, marked "Allegro" in 6/8 time. It consists of five staves of music with various notes, rests, and accidentals.

Sonata *Andante*

Handwritten musical score for the second section, marked "Sonata" and "Andante". It consists of five staves of music with various notes, rests, and accidentals.

Allegro

Handwritten musical score for the third section, marked "Allegro". It consists of two staves of music with various notes, rests, and accidentals.

Handwritten musical notation on a single staff, featuring a treble clef, a key signature of one flat (B-flat), and a 3/4 time signature. The notation consists of a series of eighth and sixteenth notes, some beamed together, with a final fermata.

Handwritten musical notation on a single staff, continuing the piece with similar rhythmic patterns and a final fermata.

Handwritten musical notation on a single staff, showing a continuation of the melodic line with various note values.

Handwritten musical notation on a single staff, featuring a treble clef and a key signature of one flat. The notation includes a variety of note values and rests.

Handwritten musical notation on a single staff, continuing the melodic development.

Handwritten musical notation on a single staff, showing a continuation of the piece with a final fermata.

Handwritten musical notation on a single staff, featuring a treble clef and a key signature of one flat. The notation includes a variety of note values and rests.

Handwritten musical notation on a single staff, continuing the melodic line with various note values.

Handwritten musical notation on a single staff, concluding with a double bar line and a fermata.


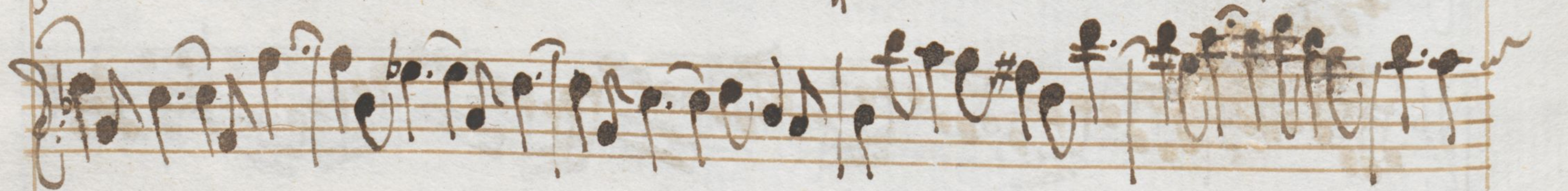
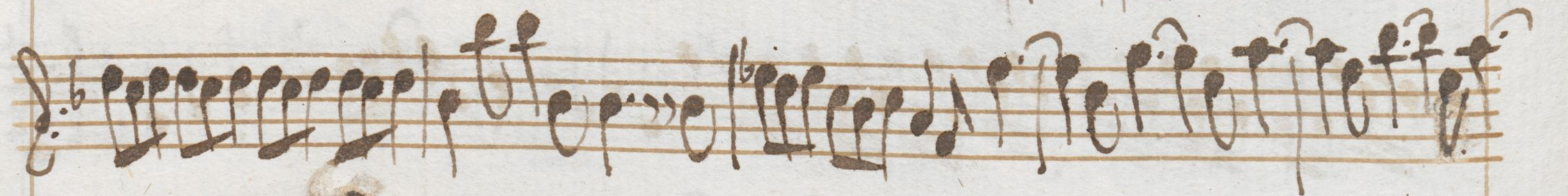
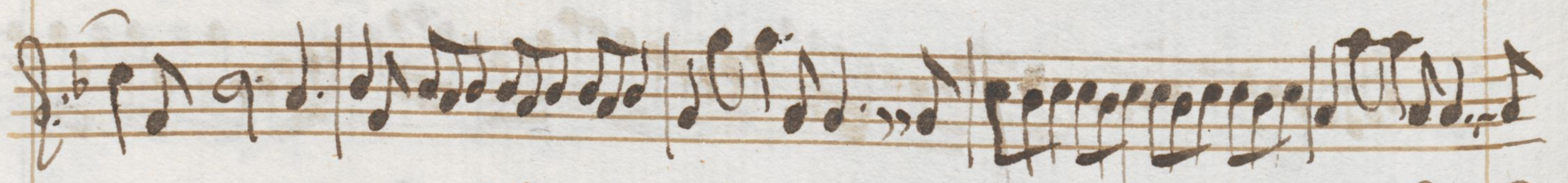
Handwritten musical notation on a single staff, starting with the word "Grave" in a cursive hand. The notation includes a treble clef, a key signature of one flat, and a 3/4 time signature.

Handwritten musical notation on a single staff, continuing the piece with a treble clef and a key signature of one flat.

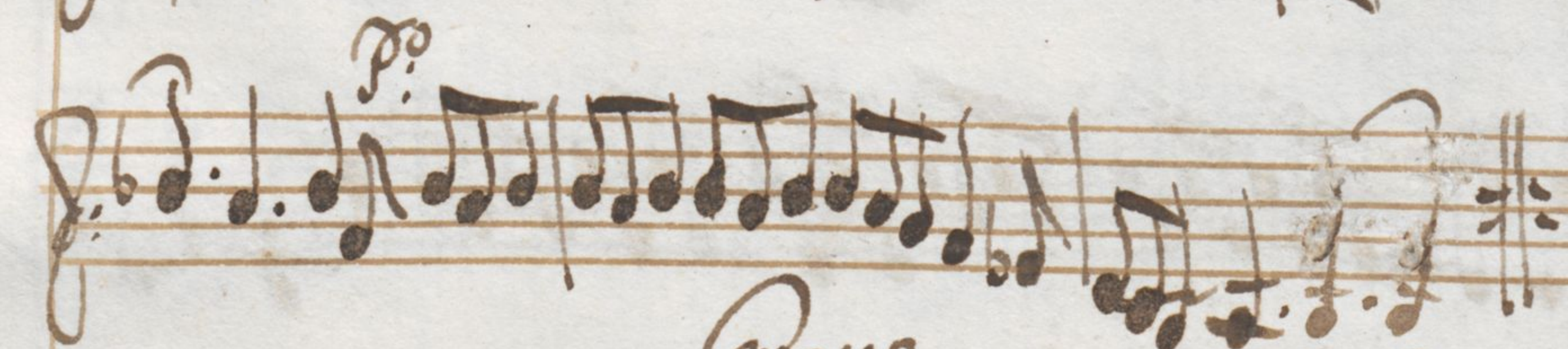
Handwritten musical notation on a single staff, concluding with a double bar line and a fermata.

Handwritten signature and date in cursive: "G. G. G. 1722".

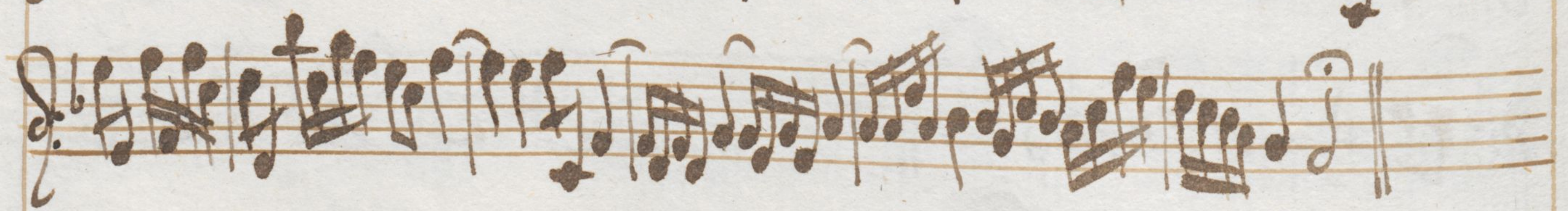
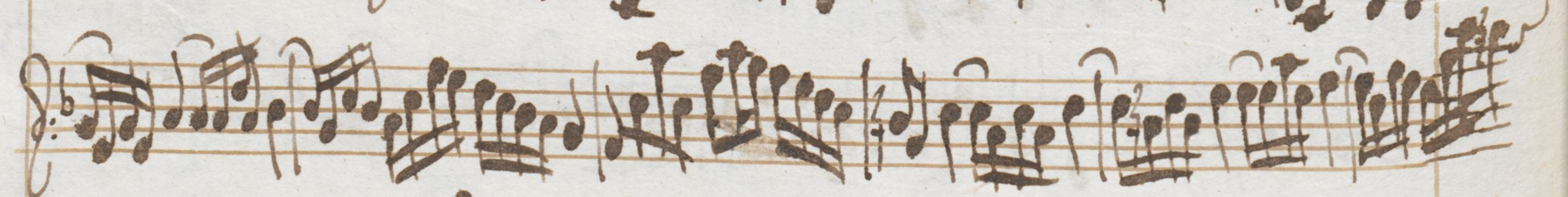
Allegro $\frac{22}{8}$



pp



Sonata *trave*



Allegro

Andante

J. J. J. J. J. J.

Allegro G^b $\frac{3}{8}$

Grave

Sonata G^b $\frac{3}{8}$

Segue f. All.

Allegro $\text{G}^{\#}$

Handwritten musical score for the first system, consisting of six staves. The notation is dense with many beamed notes and rests. The key signature is one sharp (F#).

Allegro $\text{G}^{\#}$ 4

Handwritten musical score for the second system, consisting of two staves. The notation is less dense than the first system. The key signature is one sharp (F#).

Allegro $\text{G}^{\#}$ 6

Handwritten musical score for the third system, consisting of two staves. The notation is dense with many beamed notes. The key signature is one sharp (F#).

Allegro $\text{G}^{\#}$ *Sempre subito*
fa Sed. 2. 1. 2.

Handwritten musical score for the fourth system, consisting of two staves. The notation is dense with many beamed notes. The key signature is one sharp (F#). The system concludes with the instruction "Sempre subito" and "fa Sed. 2. 1. 2." written in a cursive hand.

Handwritten musical notation on three staves. The first two staves feature dense, rapid sixteenth-note passages. The third staff continues with similar rhythmic intensity, ending with a fermata over a whole note.

Sonata 10. *Andante*

Handwritten musical notation for Sonata 10, Andante. The piece begins with a treble clef, a key signature of two sharps (F# and C#), and a common time signature. The notation is characterized by flowing, melodic lines with frequent slurs and ties, typical of the Andante tempo.

Allegro

Handwritten musical notation for an Allegro section. It begins with a treble clef, a key signature of two sharps, and a common time signature. The tempo is marked as Allegro, and the notation is more rhythmic and energetic, featuring many sixteenth-note patterns.

This block contains the main body of handwritten musical notation on the page. It consists of 11 staves of music written in G major (one sharp) and 2/4 time. The notation is dense, featuring many sixteenth and thirty-second notes, often grouped with beams and slurs. There are several dynamic markings, including 'P.0' (piano) and 'f.' (forte). The piece concludes with a double bar line and repeat dots. The handwriting is a cursive style typical of the 18th or 19th century.

Dei Dei segue la 2.ª Parte

Handwritten musical notation on five staves. The notation is in a single system, featuring a treble clef, a key signature of two sharps (F# and C#), and a common time signature (C). The music consists of a series of eighth and sixteenth notes, often beamed together in groups. The notation is dense and fills most of the staves. The fifth staff ends with a double bar line and a repeat sign.

Finer

Finisto



13

IL MARE

Scala di passi 200 geometrici

