

# TRUMPET ARIA

(from: Arie 'Letzte Stunde, brich herein', BWV31.8)

Score (03':40")

for Trumpet and Organ

Johann Sebastian Bach (1685 - 1750)

Arr. Michel Rondeau

Moderato ♩ = 100

Trumpet in C

Organ

This system contains the first five measures of the score. The Trumpet in C part is shown as a single staff with a treble clef and a 3/4 time signature, containing five whole rests. The Organ part is shown as two staves (treble and bass clefs) with a 3/4 time signature. The right hand plays a continuous eighth-note pattern, while the left hand plays a bass line with a melodic contour.

C Tpt.

Org.

This system contains measures 6 through 11. The C Trumpet part remains silent with whole rests. The Organ part continues with the eighth-note pattern in the right hand and a bass line in the left hand. A trill (tr) is indicated above the eighth note in the right hand of measure 7. The bass line features a melodic line with a sharp sign in measures 8 and 9.

C Tpt.

Org.

This system contains measures 12 through 17. The C Trumpet part remains silent with whole rests. The Organ part continues with the eighth-note pattern in the right hand and a bass line in the left hand. A trill (tr) is indicated above the eighth note in the right hand of measure 14. The bass line features a melodic line with a sharp sign in measure 15.

TRUMPET ARIA - BWV 31.8 - Bach - Score

2  
18

C Tpt.

Org.

24

C Tpt.

Org.

30

C Tpt.

Org.

36

C Tpt.

Org.

TRUMPET ARIA - BWV 31.8 - Bach - Score

42

C Tpt.

Org.

*tr*

Detailed description: This system covers measures 42 to 47. The C Trumpet part (top staff) begins with a melodic line of eighth and sixteenth notes, featuring a trill in measure 46. The Organ part (bottom two staves) provides harmonic support with a steady eighth-note accompaniment in the right hand and a more active bass line in the left hand.

48

C Tpt.

Org.

*tr*

Detailed description: This system covers measures 48 to 53. The C Trumpet part has a whole rest in measure 48, then resumes with a melodic line. The Organ part continues with its accompaniment, featuring a trill in the right hand in measure 49.

54

C Tpt.

Org.

Detailed description: This system covers measures 54 to 59. The C Trumpet part continues with its melodic line. The Organ part features a prominent eighth-note accompaniment in the right hand and a bass line with some chromatic movement.

60

C Tpt.

Org.

Detailed description: This system covers measures 60 to 65. The C Trumpet part has a whole rest in measure 60, then resumes with a melodic line. The Organ part continues with its accompaniment, ending with a whole note in the right hand in measure 65.

TRUMPET ARIA - BWV 31.8 - Bach - Score

4  
66

C Tpt.

Org.

71

C Tpt.

Org.

77

C Tpt.

Org.

83

C Tpt.

Org.



TRUMPET ARIA - BWV 31.8 - Bach - Score

6  
113

C Tpt.

Org.

118

C Tpt.

Org.

# TRUMPET ARIA

(from: Arie 'Letzte Stunde, brich herein', BWV31.8)

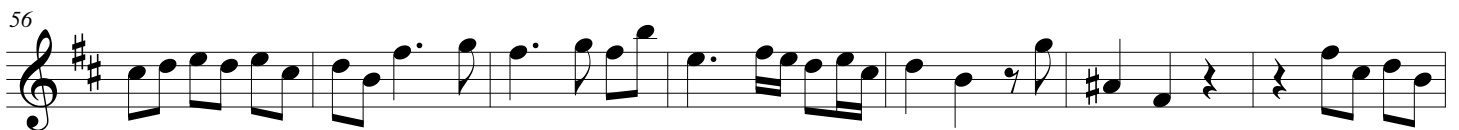
for Trumpet and Organ

## Trumpet in B $\flat$

Johann Sebastian Bach (1685 - 1750)

Arr. Michel Rondeau

Moderato  $\text{♩} = 100$



TRUMPET ARIA - BWV 31.8 - Bach - B $\flat$  Trumpet

70

7

83

8

90

9

97

10

104

10



# TRUMPET ARIA

(from: Arie 'Letzte Stunde, brich herein', BWV31.8)

for Trumpet and Organ

## Trumpet in C

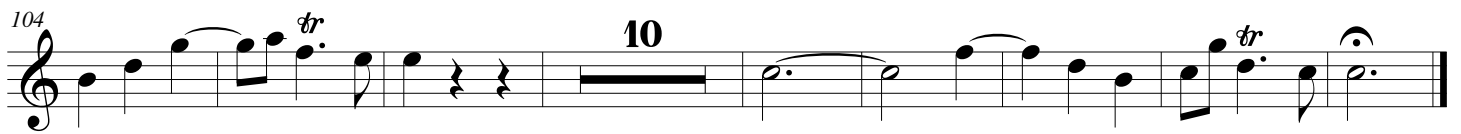
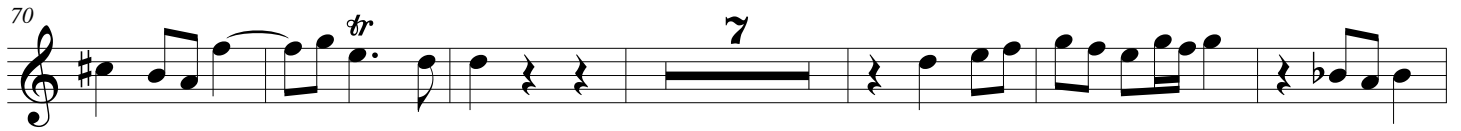
Johann Sebastian Bach (1685 - 1750)

Arr. Michel Rondeau

Moderato  $\text{♩} = 100$



## TRUMPET ARIA - BWV 31.8 - Bach - C Trumpet



# TRUMPET ARIA

(from: Arie 'Letzte Stunde, brich herein', BWV31.8)

for Trumpet and Organ

## Trumpet in D

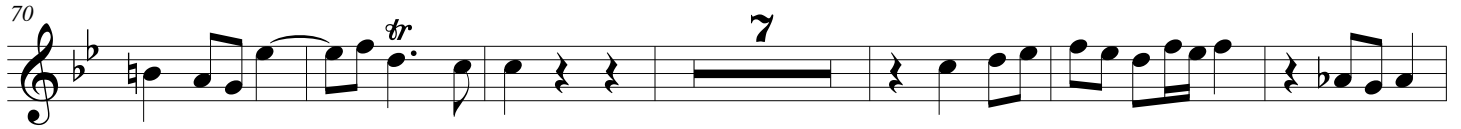
Johann Sebastian Bach (1685 - 1750)

Arr. Michel Rondeau

Moderato ♩ = 100



## TRUMPET ARIA - BWV 31.8 - Bach - D Trumpet



# TRUMPET ARIA

(from: Arie 'Letzte Stunde, brich herein', BWV31.8)  
for Trumpet and Organ

Johann Sebastian Bach (1685 - 1750)  
Arr. Michel Rondeau

## Organ

Trumpet in C

Moderato ♩ = 100

Organ

C Tpt.

Org.

C Tpt.

Org.

# TRUMPET ARIA - BWV 31.8 - Bach - Organ

2  
18

C Tpt.

Org.

24

C Tpt.

Org.

30

C Tpt.

Org.

36

C Tpt.

Org.

TRUMPET ARIA - BWV 31.8 - Bach - Organ

C Tpt. <sup>42</sup>

Org. <sup>42</sup>

Detailed description: This system contains measures 42 through 47. The C Trumpet part (top staff) begins with a treble clef and a key signature of one sharp (F#). It features a melodic line with eighth and sixteenth notes, including a trill (tr) in measure 46. The Organ part (bottom two staves) consists of a right-hand treble clef and a left-hand bass clef. The right hand plays a rhythmic accompaniment of eighth and sixteenth notes, while the left hand provides a harmonic foundation with quarter and eighth notes.

C Tpt. <sup>48</sup>

Org. <sup>48</sup>

Detailed description: This system contains measures 48 through 53. The C Trumpet part (top staff) has a whole rest in measure 48, followed by a melodic line starting in measure 49. A trill (tr) is marked in measure 50. The Organ part (bottom two staves) continues with its accompaniment, featuring a right-hand treble clef and a left-hand bass clef. The right hand has a more active melodic line with eighth and sixteenth notes, while the left hand remains mostly harmonic.

C Tpt. <sup>54</sup>

Org. <sup>54</sup>

Detailed description: This system contains measures 54 through 59. The C Trumpet part (top staff) plays a continuous melodic line with eighth and sixteenth notes. The Organ part (bottom two staves) features a right-hand treble clef and a left-hand bass clef. The right hand has a busy melodic line with many sixteenth notes, while the left hand provides a steady harmonic accompaniment with quarter notes.

C Tpt. <sup>60</sup>

Org. <sup>60</sup>

Detailed description: This system contains measures 60 through 65. The C Trumpet part (top staff) has a whole rest in measure 60, followed by a melodic line starting in measure 61. The Organ part (bottom two staves) continues with its accompaniment, featuring a right-hand treble clef and a left-hand bass clef. The right hand has a melodic line with eighth and sixteenth notes, while the left hand provides a harmonic accompaniment with quarter notes.

TRUMPET ARIA - BWV 31.8 - Bach - Organ

4  
66

C Tpt.

Org.

71

C Tpt.

Org.

77

C Tpt.

Org.

83

C Tpt.

Org.



TRUMPET ARIA - BWV 31.8 - Bach - Organ

C Tpt. <sup>89</sup>

Org. <sup>89</sup>

Detailed description: This system covers measures 89 to 94. The C Tpt. part begins with a treble clef and a key signature of one sharp (F#). It features a melodic line with eighth and sixteenth notes, including a trill (tr) in measure 91. The Organ part is written for a grand staff (treble and bass clefs). The right hand plays a rhythmic accompaniment of eighth notes, while the left hand provides a bass line with quarter and eighth notes. Trills (tr) are also present in the organ's right hand in measures 91 and 94.

C Tpt. <sup>95</sup>

Org. <sup>95</sup>

Detailed description: This system covers measures 95 to 100. The C Tpt. part continues the melodic line with eighth and sixteenth notes. The Organ part maintains its accompaniment, with the right hand featuring a trill (tr) in measure 98. The bass line continues with steady eighth-note accompaniment.

C Tpt. <sup>101</sup>

Org. <sup>101</sup>

Detailed description: This system covers measures 101 to 106. The C Tpt. part includes several trills (tr) in measures 101, 102, and 105. The Organ part continues with its characteristic accompaniment, featuring a trill (tr) in the right hand in measure 103. The bass line consists of eighth notes.

C Tpt. <sup>107</sup>

Org. <sup>107</sup>

Detailed description: This system covers measures 107 to 112. The C Tpt. part is mostly silent, indicated by a series of horizontal lines. The Organ part continues with its accompaniment, featuring a trill (tr) in the right hand in measure 111. The bass line continues with eighth notes.

TRUMPET ARIA - BWV 31.8 - Bach - Organ

6

C Tpt. *113*

Org. *113*

This system contains measures 113 through 117. The C Trumpet part (top staff) is mostly silent, with a whole note G4 in the final measure. The Organ part (bottom staves) features a rhythmic pattern of eighth notes in the right hand and a bass line with a prominent G3 in the final measure. Measure 113 starts with a treble clef and a key signature of one sharp (F#).

C Tpt. *118*

Org. *118*

This system contains measures 118 through 122. The C Trumpet part (top staff) plays a melodic line with a trill (tr.) in measure 121. The Organ part (bottom staves) continues the rhythmic pattern, with a trill (tr.) in the right hand in measure 121. Measure 118 starts with a treble clef and a key signature of one sharp (F#).