



C.1925

Messe de Mozart

Sanctus

Cabris *[Signature]*

9 Janvier 1888

[Large red handwritten mark, possibly 'B' with a diagonal line]



Le chœur avec les
nuances
le maître
sans liaisons et
sans nuances



Cors - deux lignes
Cromph.
Basson
Harpe

Andante Moderato

2 Basses
Andante Moderato

Harpe

Violons
Andante Moderato
con Sordini

1^{us}
2^{us}

1^{us}
Violoncelles
Andante Moderato

2^{us}
Conti. bap.

Moderato

S.
A.

1^{us} et 2^{us} T.
1^{us} et 2^{us} B.

Andante Moderato

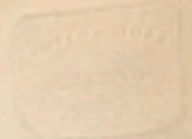
Cors
Cromph.
en Fa
Andante Moderato
sur deux lignes

2 Trompettes
en Fa

Handwritten musical score on aged paper, featuring multiple staves with musical notation and lyrics. The score includes a vocal line with lyrics and a piano accompaniment. The lyrics are: *tus*, *sanc - - - tus*, *Do - - mi -*, *sanc - - - tus*, *sanc - - - tus*.

Handwritten annotation: *un octave au dessous*

Red circular stamp: *CONSERVATOIRE NATIONAL DE MUSIQUE*



Handwritten musical score on aged paper, featuring multiple staves of music and lyrics. The score includes various musical notations such as notes, rests, and dynamic markings.

Key annotations and markings include:

- un octave au dessous* (written in the second system)
- pp* (pianissimo) in the sixth system
- pp* (pianissimo) in the seventh system
- pp* (pianissimo) in the eighth system

Lyrics are written below the vocal staves:

- System 5: *- nus* *do - - mi - - nus* *de - -*
- System 6: *pp* *Sanc - - - tus* *do - - mi - nus*

The score is organized into systems, with some systems containing multiple staves of music. The bottom of the page shows several empty staves.

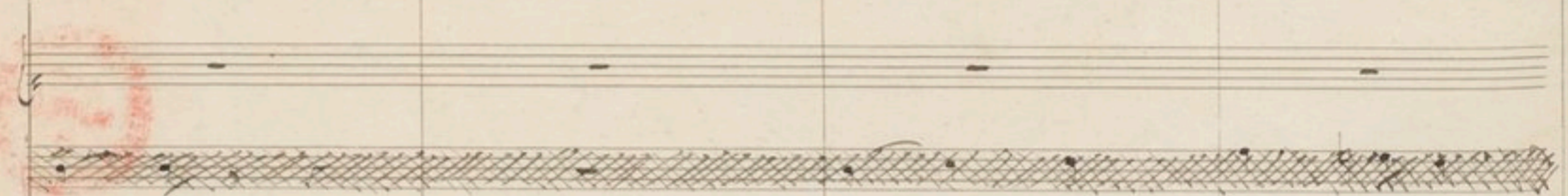


Handwritten musical score for piano and voice. The piano part consists of multiple staves with dense sixteenth-note patterns and slurs. The vocal line includes lyrics: "de - - - us Sa - ba -".



Handwritten musical score for piano and voice. The piano part continues with similar sixteenth-note patterns. The vocal line includes lyrics: "mi - - - us de - - - us".

Handwritten musical notation for piano accompaniment, featuring multiple staves with complex rhythmic patterns and slurs.



oth
De - - - us sa - ba - - - oth
San - - - tus Do - - - mi - - - nus

Handwritten musical notation for piano accompaniment, including chordal structures and melodic lines.

Handwritten musical notation on a single staff, consisting of a few notes and rests.

Handwritten musical notation on a single staff, featuring a series of beamed eighth notes.

Handwritten musical notation on a single staff, showing a sequence of chords.

octave au dessous

Handwritten musical notation on a single staff, with beamed eighth notes.

Handwritten musical notation on a single staff, with beamed eighth notes.

Handwritten musical notation on a single staff, showing a sequence of chords.

Handwritten musical notation on a single staff, with beamed eighth notes.

Handwritten musical notation on a single staff, with beamed eighth notes.

Handwritten musical notation on a single staff, with beamed eighth notes.

Handwritten musical notation on a single staff, with beamed eighth notes.

Handwritten musical notation on a single staff, with beamed eighth notes.

Handwritten musical notation on a single staff, with beamed eighth notes.

Handwritten musical notation on a single staff, with beamed eighth notes.

Handwritten musical notation on a single staff, with beamed eighth notes.

Handwritten musical notation on a single staff, with beamed eighth notes.

Handwritten musical notation on a single staff, with beamed eighth notes.

Handwritten musical notation on a single staff, with beamed eighth notes.

Handwritten musical notation on a single staff, with beamed eighth notes.

Handwritten musical notation on a single staff, with beamed eighth notes.

Handwritten musical notation on a single staff, with beamed eighth notes.



pp

arco

pizz

sempre dolce

Pla - ni sunt cae - li et

sa - ba - oth

sa - ba - oth

1st fl

p

Corn
Trump.

pp

1st fl

p

dolce sempre

Handwritten musical score for the first system, including vocal lines and piano accompaniment. The notation features various note values, rests, and dynamic markings such as *pp* and *arco*. The tempo/mood is indicated as *dolce sempre*.

arco

dolce sempre



Ter - - - - ra

sempre dolce

sempre dolce

glo - ri - a glo - ri - a

C.
Comp.

dolce
1^o 2^o 3^o
pp

Handwritten musical score for the upper part of the piece. It consists of several staves. The top staff contains notes with a 'd.' above them and a 'sempre p' marking. Below it are staves with rhythmic patterns and notes. A staff with the instruction 'in octaves' is present. The bottom of this section shows a grand staff with piano accompaniment.

Ho - san - na in ex -

tu

Con
Temp.

Handwritten musical score for the lower part of the piece, including a grand staff with piano accompaniment. It features a 3/4 time signature and a 'Dolce' marking. The notes are mostly sustained chords and single notes.

poco a poco cresc.

Handwritten musical score for piano and voice. The piano part features complex textures with multiple staves, including arpeggiated chords and rapid sixteenth-note passages. The vocal line is marked *Dim.* and includes some scribbled-out notation. Dynamic markings include *poco a poco cresc.* and *cresc.* throughout the section.

Vocal line with lyrics: *- cel - - - - - sis ho san - na in - ce -*

Handwritten musical score for piano and voice. The piano part continues with complex textures and dynamic markings such as *poco a poco cresc.* and *cresc.* The vocal line is partially obscured by piano accompaniment.



Handwritten musical score for strings and woodwinds. The top staff is a single line with notes and dynamics like 'ff'. Below it are two staves for woodwinds (oboe and bassoon) with notes and dynamics. The bottom two staves are for strings (violin and viola) with notes and dynamics. A red circular stamp is visible on the left side of the page.

Handwritten musical score for vocal and piano parts. The top staff is a vocal line with lyrics "Ho - san - na" and dynamics "ff" and "p". Below it are two staves for piano accompaniment with notes and dynamics. A red circular stamp is visible on the left side of the page.

3^o
C₄
p_b
p_b
p_b

[Handwritten signature]

1. 2. 3. 4.

Handwritten musical score for the first system, consisting of five staves. The notation includes various rhythmic values and dynamic markings. The word "dimin." is written above the first and second staves. The third staff has "dimin." and "pizz" written above it. The fourth and fifth staves also have "dimin." and "pizz" markings. There are several slanted lines across the third and fourth staves, possibly indicating a section change or a specific performance instruction.



Handwritten musical score for the second system, consisting of two staves. The top staff contains the lyrics "Ho san - - na in" with a "ff" dynamic marking above the first note. The bottom staff contains the lyrics "in - - - - - in - - - - -" with a "tempo A" marking above it.

Handwritten musical score for the third system, consisting of two staves. The top staff contains the lyrics "in - - - - - in - - - - -" with a "tempo A" marking above it. The bottom staff contains the lyrics "in - - - - - in - - - - -" with a "tempo A" marking above it.

Handwritten musical score for the fourth system, consisting of four staves. The notation includes various rhythmic values and dynamic markings. The word "dimin." is written above the top staff. The bottom two staves feature a complex bass line with a "ff" dynamic marking and a "p" dynamic marking.

Handwritten musical score for strings and woodwinds. The top two staves are for strings, with dynamics like 'p' and 'sempre p'. The middle two staves are for woodwinds, with 'arco' and 'pp' markings. A red circular stamp is visible on the left side of the woodwind staves.

dimin.
cel - sis in ex - cel - sis

pp
dim.
pp

C.
Trump

pp
p
ppp

1st

H

V. Solo

A

Vcllo

C. b.

This system contains the first four staves of the score. The Horn part (H) features a melodic line with slurs and accents. The Violin Solo part (V. Solo) has a single melodic line. The Viola part (A) consists of two staves with complex rhythmic patterns and slurs. The Violoncello (Vcllo) and Contrabass (C. b.) parts are written in two staves each, with long, sustained notes and slurs.



pp sanc

Bassins

This system contains the second four staves of the score. The first staff is labeled "pp sanc" and contains a single melodic line. The Basses part (Bassins) is written in two staves, featuring a complex rhythmic pattern with many notes and slurs. The remaining two staves in this system are empty.

This page contains a handwritten musical score on aged, yellowed paper. The score is organized into systems of staves. The top system includes a vocal line with lyrics, a piano accompaniment with chords and melodic lines, and a bass line. The middle section of the page consists of several empty staves. The bottom system continues the musical notation. A red circular stamp is located in the lower right quadrant, containing the text "BIBLIOTHÈQUE NATIONALE DE MUSIQUE" and "PARIS". The page is numbered "54" in the top left corner and "69" in the bottom right corner. There is a signature or initials at the bottom center of the page.



[Handwritten signature/initials]

