

C.1925

Requiem

In paradisum

J. Faure



7

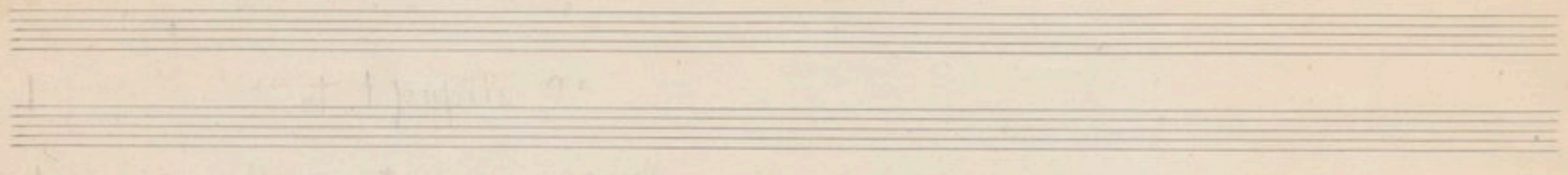
Le Requiem

on remarquera à gauche, les retouches d'orchestration, au centre les indications au crayon, à droite, au crayon, l'ébauche primitive.

61



MS. 413



Andant. Moderato

Violon $\text{F}\sharp\text{ 3/4}$

Andant. moderato

altes Solo $\text{F}\sharp\text{ 3/4}$ *con sordini*

1^{er} altes $\text{F}\sharp\text{ 3/4}$ *con sordini* col altes Solo

2^{em} altes $\text{F}\sharp\text{ 3/4}$ *con sordini*

1^{er} Violoncello $\text{F}\sharp\text{ 3/4}$ *con sordini*

2^{em} Violoncello $\text{F}\sharp\text{ 3/4}$ *con sordini* *pp*

Harpe $\text{F}\sharp\text{ 3/4}$

Soprano $\text{F}\sharp\text{ 3/4}$ *p dolce*
In pa - - ra - ri

altos $\text{F}\sharp\text{ 3/4}$

Tenors $\text{F}\sharp\text{ 3/4}$

Basses $\text{F}\sharp\text{ 3/4}$

Andante moderato

dolce

Contre basse $\text{F}\sharp\text{ 3/4}$ *pp puz*

Andant. moderato

Basses $\text{F}\sharp\text{ 3/4}$



A.

Vclly

H.



Empty musical staves at the top of the page.

Musical notation for Violins (Vclly) and Horns (H.). The Violin part features a melodic line with slurs and accents. The Horn part consists of a rhythmic accompaniment with slurs.

Vocal line with lyrics: *de - du - cant an - - - g -*. The notation includes a fermata over the first measure and a *rit. cresc. f.* marking above the second measure.

Musical notation for the lower strings, showing a rhythmic accompaniment with slurs and accents.

C.

Bas

Musical notation for the Bass (Bas) part, showing a rhythmic accompaniment with slurs and accents.

A

Violins

A.

Vclly

H

p sempre

bi in tu - o al - ven - tu, sus -

C. B.

Bass



Violas

A

Vcllo

H



-ci - pi - ant te mar - - ty - res

CB.

Barf.

B

Violon

B

f

A

Vcllo

H

sempre dolce

et per-du-cant te

in ci-vi-ta-tem sanc-tam, Je-ru-sa-

dir. $\frac{3}{4}$

pp $\frac{3}{4}$

dir. $\frac{3}{4}$

$\frac{3}{4}$

C-B.

arco
p sempre

Basso



Violon

A

Vcllo

H.



Empty musical staves for Violon and Vcllo.

Violon part with notes and rests.

Violon part with notes and rests.

Violon part with notes and rests.

Violon part with notes and rests.

Violon part with notes and rests.

Violon part with notes and rests.

Violon part with notes and rests.

Violon part with notes and rests.

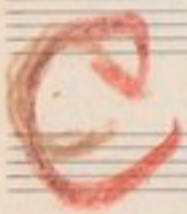
Violon part with notes and rests.

C.D.

Bass

C.D. part with notes and rests.

Bass part with notes and rests.



Vieno

A

Vcllo

H

ten

C-b.

Organo



Violins

A.

Violas

H.

C. O. B.

Bass

Violins

A.

Violas

H.

cho - rus an - ge - lo - rum

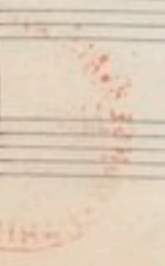
p

sempre

pizz

dim

pp





Violins

A



H

te sus-ci-pi-at

Sempre Solo

et cum La-ga-es

C.B.

Bass



Violins

A.

Viols

H

Violins part 1: Handwritten musical notation on a single staff, featuring a series of notes with stems and beams, including some accidentals.

Violins part 2: Handwritten musical notation on a single staff, continuing the melodic line with various note values and accidentals.

Viols part 1: Handwritten musical notation on a single staff, showing a melodic line with some dynamic markings.

Viols part 2: Handwritten musical notation on a single staff, featuring a melodic line with a slur and various note values.

Viols part 3: Handwritten musical notation on a single staff, including a slur and a dynamic marking 'p'.

Viols part 4: Handwritten musical notation on a single staff, showing a melodic line with a slur and a dynamic marking 'p'.

Viols part 5: Handwritten musical notation on a single staff, featuring a complex melodic line with many notes and beams.

Viols part 6: Handwritten musical notation on a single staff, showing a melodic line with a slur and a dynamic marking 'p'.

Viols part 7: Handwritten musical notation on a single staff, featuring a melodic line with a slur and a dynamic marking 'p'.

Viols part 8: Handwritten musical notation on a single staff, showing a melodic line with a slur and a dynamic marking 'p'.

Viols part 9: Handwritten musical notation on a single staff, featuring a melodic line with a slur and a dynamic marking 'p'.

Viols part 10: Handwritten musical notation on a single staff, showing a melodic line with a slur and a dynamic marking 'p'.

Viols part 11: Handwritten musical notation on a single staff, featuring a melodic line with a slur and a dynamic marking 'p'.

Viols part 12: Handwritten musical notation on a single staff, showing a melodic line with a slur and a dynamic marking 'p'.

Viols part 13: Handwritten musical notation on a single staff, featuring a melodic line with a slur and a dynamic marking 'p'.

Viols part 14: Handwritten musical notation on a single staff, showing a melodic line with a slur and a dynamic marking 'p'.

Viols part 15: Handwritten musical notation on a single staff, featuring a melodic line with a slur and a dynamic marking 'p'.

Viols part 16: Handwritten musical notation on a single staff, showing a melodic line with a slur and a dynamic marking 'p'.



quan - - - - - Jam pau - - - - - pe - re et cum

Bas.

Bas. part: Handwritten musical notation on a single staff, featuring a series of notes with stems and beams, including some accidentals.

11

Violins

A

Viola

#

La - za - ro quan - - - dam pan - - - pe - re ae - ter - nam

C.B

C.

Bas.



Violon

A

Vcllo

H

ha - - be - as re - - - - - qui - em !

re - - - - - qui - em !

re - - - - - qui - em

re - - - - - qui - em

C.B.

Bass

Violon: Handwritten musical notation with notes, rests, and dynamic markings like *p*.

A: Handwritten musical notation with notes and rests.

Vcllo: Handwritten musical notation with notes and rests.

H: Handwritten musical notation with notes and rests.

Vocal: Lyrics "ha - - be - as re - - - - - qui - em !", "re - - - - - qui - em !", "re - - - - - qui - em", "re - - - - - qui - em".

C.B.: Handwritten musical notation with notes and rests.

Bass: Handwritten musical notation with notes and rests.

Red Stamp: "BIBLIOTHÈQUE NATIONALE DE MUSIQUE - PARIS" (National Library of Music - Paris).



Violins

pp

A

Vcllo

H

ae - - - tu - - - - - nam

Ter nam

Ter nam

Ter nam

C. B.

Bass



Handwritten musical notation on two staves, including a dynamic marking *ff* at the beginning.

Handwritten musical notation for strings, including Violins (V. cell.), Violas (V. cell.), and Horns (H.).



Vocal line with lyrics: ha - - - - - be - as re - - - - -

Handwritten musical notation for C.B. (Cello/Bass) and Bass.

Violon

A.

Vielle

qui - em!

qui - em!

qui - em!

qui - - em!

C. B.

Bass



