

TRUMPET ARIA

(from: Arie 'Soll ich meinen Lebenslauf', BWV 153.8)

for Trumpet and Organ

Score (02':42")

Johann Sebastian Bach (1685 - 1750)

Arr. Michel Rondeau

Moderato ♩ = 120

Trumpet in C

Organ

This system contains the first six measures of the score. The Trumpet in C part is shown as a single staff with a whole rest in every measure. The Organ part is shown as two staves (treble and bass clef). The key signature is one sharp (F#) and the time signature is 3/4. The organ accompaniment features a steady eighth-note pattern in the bass and a more melodic line in the treble.

C Tpt.

Org.

This system contains measures 7 through 13. The C Trumpet part begins in measure 7 with a melodic line. The Organ part continues with its accompaniment, featuring a trill in the treble staff in measure 10.

C Tpt.

Org.

This system contains measures 14 through 20. The C Trumpet part continues its melodic line. The Organ part maintains the accompaniment pattern.

C Tpt.

Org.

This system contains measures 21 through 27. The C Trumpet part concludes with a trill in measure 22 and then rests. The Organ part continues with its accompaniment.

TRUMPET ARIA - BWV 153.8 - Bach - Score

28

C Tpt.

Org.

35

C Tpt.

Org.

42

C Tpt.

Org.

49

C Tpt.

Org.

TRUMPET ARIA - BWV 153.8 - Bach - Score

55

C Tpt.

Org.



62

C Tpt.

Org.



69

Allegro

C Tpt.

Org.



75

C Tpt.

Org.



TRUMPET ARIA - BWV 153.8 - Bach - Score

C Tpt. 81

Org. 81

This system contains measures 81 through 86. The C Trumpet part (top staff) begins with a melodic line of eighth notes, followed by a half note with a fermata. The Organ part (bottom two staves) features a rhythmic accompaniment of eighth notes in the right hand and a bass line of quarter notes in the left hand. The key signature is one sharp (F#).

C Tpt. 87

Org. 87

This system contains measures 87 through 93. The C Trumpet part (top staff) has a melodic line with a trill (tr) on the eighth note of measure 87, followed by a half note with a fermata. The Organ part (bottom two staves) continues with the eighth-note accompaniment. The key signature is one sharp (F#).

C Tpt. 94

Org. 94

This system contains measures 94 through 100. The C Trumpet part (top staff) is mostly silent, with a melodic line starting in measure 97. The Organ part (bottom two staves) continues with the eighth-note accompaniment. The key signature is one sharp (F#).

C Tpt. 101

Org. 101

This system contains measures 101 through 106, ending with a double bar line. The C Trumpet part (top staff) has a melodic line of eighth notes. The Organ part (bottom two staves) continues with the eighth-note accompaniment. The key signature is one sharp (F#).

TRUMPET ARIA

(from: Arie 'Soll ich meinen Lebenslauf', BWV 153.8)

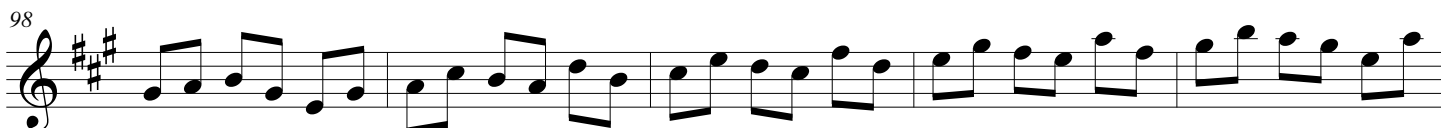
for Trumpet and Organ

Trumpet in B \flat

Johann Sebastian Bach (1685 - 1750)

Arr. Michel Rondeau

Moderato $\text{♩} = 120$



TRUMPET ARIA

(from: Arie 'Soll ich meinen Lebenslauf', BWV 153.8)

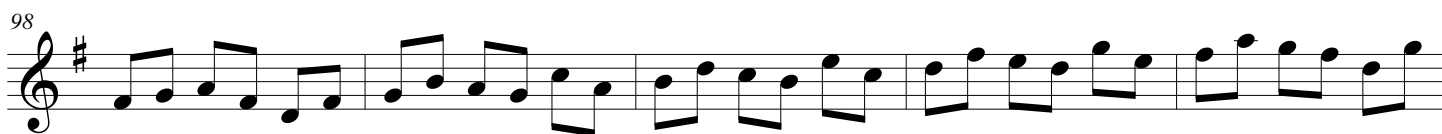
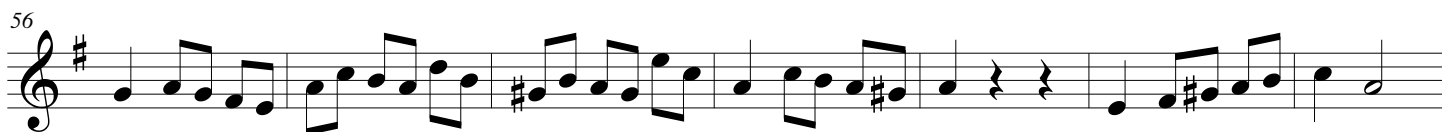
for Trumpet and Organ

Trumpet in C

Johann Sebastian Bach (1685 - 1750)

Arr. Michel Rondeau

Moderato $\text{♩} = 120$



TRUMPET ARIA

(from: Arie 'Soll ich meinen Lebenslauf', BWV 153.8)

for Trumpet and Organ

Trumpet in D

Johann Sebastian Bach (1685 - 1750)

Arr. Michel Rondeau

Moderato ♩ = 120

12

19

49

56

63

71 Allegro

78

85

98

103

24

tr

7

The image shows a musical score for a trumpet part. It consists of ten staves of music. The first staff begins with a treble clef, a key signature of one flat (B-flat), and a 3/4 time signature. Above the staff, the tempo is marked 'Moderato' with a quarter note equal to 120 beats per minute. A measure rest for 12 measures is indicated. The music continues with various rhythmic patterns, including eighth and sixteenth notes. The second staff starts at measure 19 and includes a trill (tr) and a measure rest for 24 measures. The third staff starts at measure 49. The fourth staff starts at measure 56. The fifth staff starts at measure 63. The sixth staff starts at measure 71 and is marked 'Allegro'. The seventh staff starts at measure 78. The eighth staff starts at measure 85 and includes a trill (tr) and a measure rest for 7 measures. The ninth staff starts at measure 98. The tenth staff starts at measure 103 and ends with a double bar line.

TRUMPET ARIA

(from: Arie 'Soll ich meinen Lebenslauf', BWV 153.8)
for Trumpet and Organ

Johann Sebastian Bach (1685 - 1750)

Arr. Michel Rondeau

Organ

Trumpet in C

Moderato ♩ = 120

C Tpt.

Org.

C Tpt.

Org.

C Tpt.

Org.

TRUMPET ARIA - BWV 153.8 - Bach - Organ

C Tpt.

Org.

C Tpt.

Org.

C Tpt.

Org.

C Tpt.

Org.

TRUMPET ARIA - BWV 153.8 - Bach - Organ

55

C Tpt.

Org.

62

C Tpt.

Org.

69

Allegro

C Tpt.

Org.

75

C Tpt.

Org.

TRUMPET ARIA - BWV 153.8 - Bach - Organ

C Tpt.

81

Org.

Detailed description: This system covers measures 81 to 86. The C Trumpet part (top staff) begins with a melodic line of eighth notes in measure 81, followed by a half note in measure 82, and continues with eighth notes through measure 86. The Organ part (bottom two staves) provides accompaniment with chords and moving lines in both hands. Measure 81 features a treble clef with eighth-note chords, while the bass clef has a steady eighth-note bass line. Measures 82-86 show various chordal textures and melodic fragments in both hands.

C Tpt.

87

Org.

Detailed description: This system covers measures 87 to 93. The C Trumpet part (top staff) has a melodic line in measure 87, followed by a trill (tr) in measure 88, and then rests for the remainder of the system. The Organ part (bottom two staves) continues with accompaniment, featuring a treble clef with eighth-note chords and a bass clef with eighth-note accompaniment. Measure 87 starts with a treble clef and eighth-note chords, while the bass clef has a steady eighth-note bass line.

C Tpt.

94

Org.

Detailed description: This system covers measures 94 to 100. The C Trumpet part (top staff) has rests for measures 94-96, followed by a melodic line of eighth notes in measures 97-100. The Organ part (bottom two staves) provides accompaniment with chords and moving lines in both hands. Measure 94 features a treble clef with chords, while the bass clef has a steady eighth-note bass line. Measures 97-100 show various chordal textures and melodic fragments in both hands.

C Tpt.

101

Org.

Detailed description: This system covers measures 101 to 106. The C Trumpet part (top staff) has a melodic line of eighth notes throughout the system. The Organ part (bottom two staves) provides accompaniment with chords and moving lines in both hands. Measure 101 features a treble clef with eighth-note chords, while the bass clef has a steady eighth-note bass line. Measures 102-106 show various chordal textures and melodic fragments in both hands.