

Trio super: Nun komm' der Heiden Heiland

a due Bassi e Canto fermo

BWV 660

J. S. Bach

Piano Transcription by Ruoshi Sun

This piano transcription of J.S. Bach's Trio super BWV 660 is arranged for two basses and a cantus firmus. The score is written in B-flat major (two flats) and common time (C). It consists of 11 measures. The first system (measures 1-2) features a cantus firmus in the right hand and a bass line in the left hand. The second system (measures 3-4) continues the cantus firmus and bass line. The third system (measures 5-6) introduces a new bass line in the left hand. The fourth system (measures 7-8) features a cantus firmus in the right hand and a bass line in the left hand. The fifth system (measures 9-10) continues the cantus firmus and bass line. The sixth system (measures 11) concludes the piece with a final cadence. The transcription includes various musical notations such as notes, rests, accidentals, and dynamic markings.

13

Measures 13 and 14 of a musical score. The key signature has two flats (B-flat and E-flat). Measure 13 features a bass line with a half note G2, a quarter note A2, and a half note B1. The treble line has a half note G4, a quarter note A4, and a half note B4. Measure 14 continues the bass line with a half note C3, a quarter note D3, and a half note E3. The treble line has a half note C5, a quarter note D5, and a half note E5.

15

Measures 15 and 16 of a musical score. The key signature has two flats (B-flat and E-flat). Measure 15 features a bass line with a half note G2, a quarter note A2, and a half note B1. The treble line has a half note G4, a quarter note A4, and a half note B4. Measure 16 continues the bass line with a half note C3, a quarter note D3, and a half note E3. The treble line has a half note C5, a quarter note D5, and a half note E5.

18

Measures 18 and 19 of a musical score. The key signature has two flats (B-flat and E-flat). Measure 18 features a bass line with a half note G2, a quarter note A2, and a half note B1. The treble line has a half note G4, a quarter note A4, and a half note B4. Measure 19 continues the bass line with a half note C3, a quarter note D3, and a half note E3. The treble line has a half note C5, a quarter note D5, and a half note E5.

20

Measures 20, 21, and 22 of a musical score. The key signature has two flats (B-flat and E-flat). Measure 20 features a bass line with a half note G2, a quarter note A2, and a half note B1. The treble line has a half note G4, a quarter note A4, and a half note B4. Measure 21 continues the bass line with a half note C3, a quarter note D3, and a half note E3. The treble line has a half note C5, a quarter note D5, and a half note E5. Measure 22 continues the bass line with a half note F3, a quarter note G3, and a half note A3. The treble line has a half note F5, a quarter note G5, and a half note A5.

23

Measures 23 and 24 of a musical score. The key signature has two flats (B-flat and E-flat). Measure 23 features a bass line with a half note G2, a quarter note A2, and a half note B1. The treble line has a half note G4, a quarter note A4, and a half note B4. Measure 24 continues the bass line with a half note C3, a quarter note D3, and a half note E3. The treble line has a half note C5, a quarter note D5, and a half note E5.

25

Measures 25 and 26 of a musical score. The key signature has two flats (B-flat and E-flat). Measure 25 features a bass line with a half note G2, a quarter note A2, and a half note B1. The treble line has a half note G4, a quarter note A4, and a half note B4. Measure 26 continues the bass line with a half note C3, a quarter note D3, and a half note E3. The treble line has a half note C5, a quarter note D5, and a half note E5.

27

Measures 27 and 28 of a musical score. The key signature has two flats (B-flat and E-flat). Measure 27 features a bass line with a half note G2, a quarter note A2, and a half note B1. The treble line has a half note G4, a quarter note A4, and a half note B4. Measure 28 continues the bass line with a half note C3, a quarter note D3, and a half note E3. The treble line has a half note C5, a quarter note D5, and a half note E5.

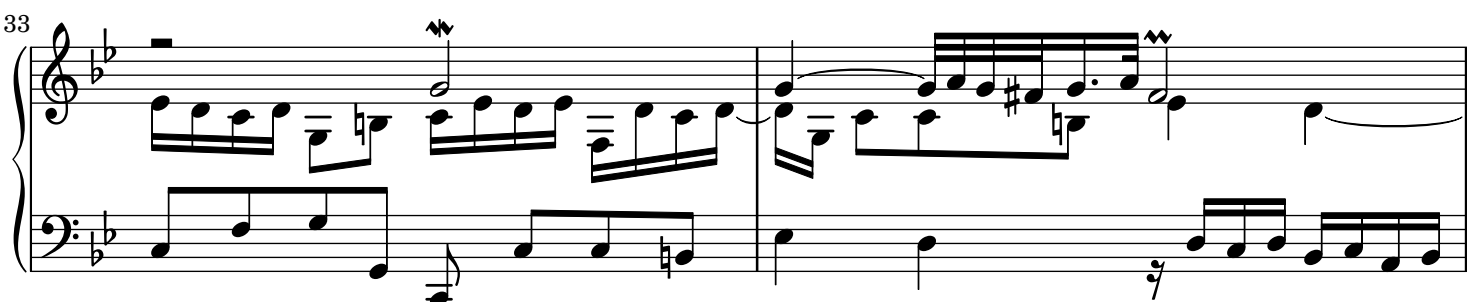
29



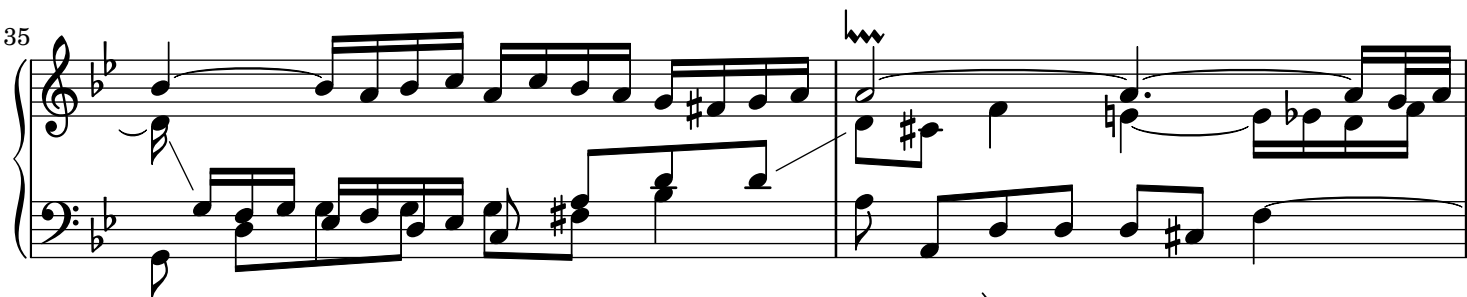
31



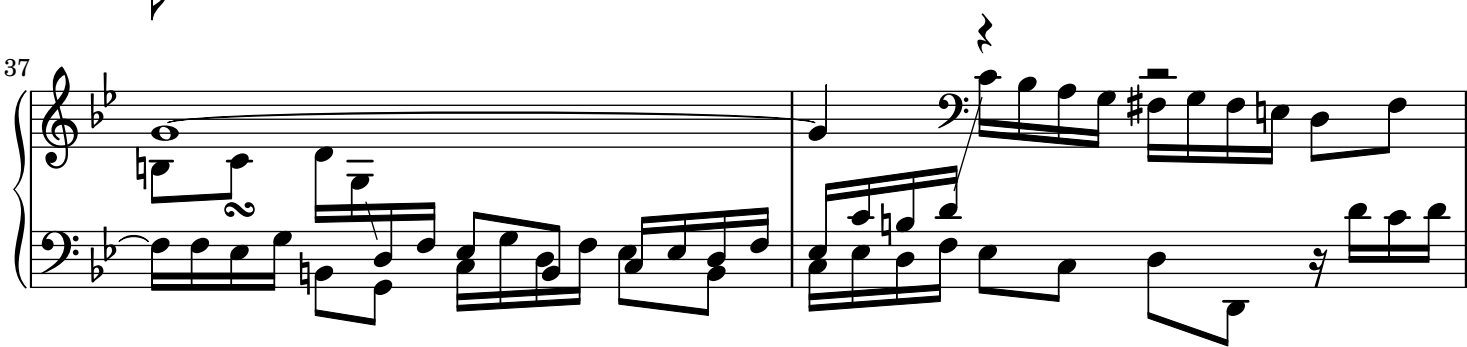
33



35



37



39



41

