

Contrabbassi

Begrüßung

Humboldt-Kantate

Ludwig Rellstab

MWV D 2
No. 1 Chor

Felix Mendelssohn Bartholdy
(1809-1847)

Andante con moto



8



12



17



23



30

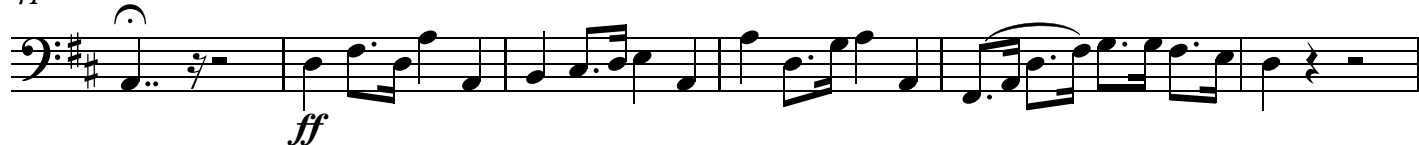
rit. . . *A tempo*



36



41



47



51



Contrabbassi
No. 1a Recit.

Musical notation for the first system of 'No. 1a Recit.' in bass clef, 3/4 time, key of B-flat major. It begins with a fermata over a whole note rest, followed by a series of eighth notes with rests. Dynamics include *pp*, *f*, *f*, and *p*.

65

Allegro vivace

Musical notation for the second system of 'No. 1a Recit.' starting at measure 65. It features a series of eighth notes with rests, followed by a more active eighth-note pattern. Dynamics include *p*.

72

Musical notation for the third system of 'No. 1a Recit.' starting at measure 72. It continues with eighth-note patterns and rests.

78

Musical notation for the fourth system of 'No. 1a Recit.' starting at measure 78. It features eighth-note patterns with rests.

84

Musical notation for the fifth system of 'No. 1a Recit.' starting at measure 84. It consists of eighth notes with rests.

91

Musical notation for the sixth system of 'No. 1a Recit.' starting at measure 91. It features eighth notes with rests, followed by a half note and a whole note. Dynamics include *cresc. molto*.

97

attacca No. 2

Musical notation for the seventh system of 'No. 1a Recit.' starting at measure 97. It features a half note, a quarter note, and a whole note, followed by a fermata. Dynamics include *f cresc.* and *ff*.

No. 2 Chor

Allegro di molto

Musical notation for the eighth system of 'No. 1a Recit.' starting at measure 107. It features a series of eighth notes with rests. Dynamics include *ff*.

107

Musical notation for the ninth system of 'No. 1a Recit.' starting at measure 107. It features eighth notes with rests.

113

118

124

130

135

140

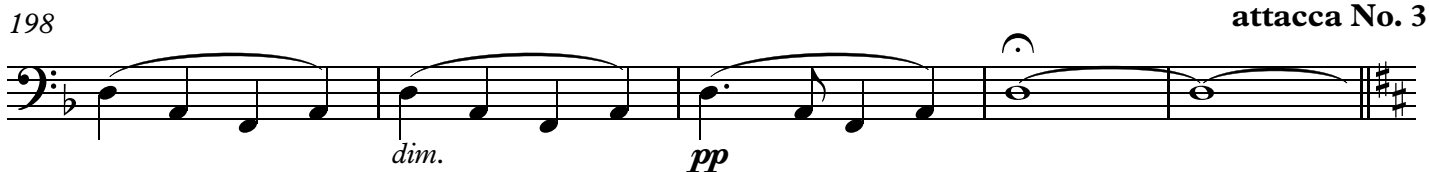
146

151

155

159

163

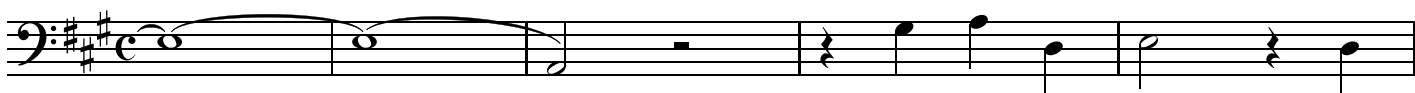


No. 3 Recit.



Andante

No. 4 Arioso



229

p

234

cresc. f sf f p pp

240

f p f

No. 5 Tenor solo und

Allegro vivace

246

p pizz.

250

257

arco f

264

pizz.

271

arco p f

278

p

285

f

294 **10** *pizz.*
f

309 **3** *pizz.*

317 **3** *arco*
p *cresc.*

324 **3** **2** *rit.*
f

331 *pizz.* **A tempo** *arco*
pp *p*

339 *pizz.* *arco*
p

346 *cresc.* *f* *p* *p* * in Mendelssohns Handschrift

352 *f*

359 *f* *ff*

366

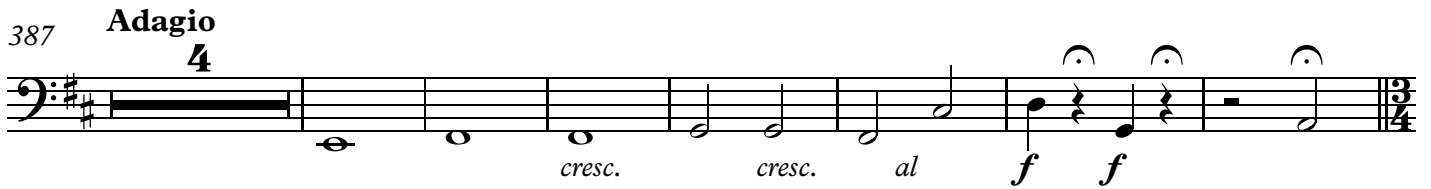
374 *pizz.* *dim.* *pp*



arco

Musical staff with a bass clef, key signature of two sharps (F# and C#), and common time (C). The staff contains a series of notes, including a half note with a fermata, and is marked with *arco*.

387 **Adagio**
4

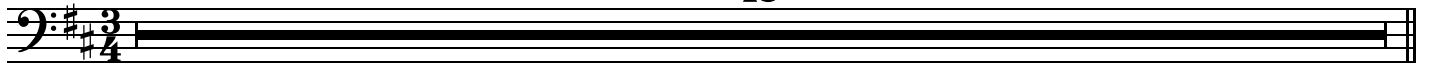


cresc. *cresc.* *al* **f** **f**

Musical staff with a bass clef, key signature of two sharps, and a 4/4 time signature. The staff contains a series of notes, including a half note with a fermata, and is marked with *cresc.*, *cresc.*, *al*, **f**, and **f**. The staff ends with a 3/4 time signature.

No. 7 Chor

18



Musical staff with a bass clef, key signature of two sharps, and a 3/4 time signature. The staff is completely obscured by a thick black bar.

416



p *cresc.*

Musical staff with a bass clef, key signature of two sharps, and common time. The staff contains a series of notes, including a half note with a fermata, and is marked with **p** and *cresc.*

421



mf *cresc.* **ff**


Musical staff with a bass clef, key signature of two sharps, and common time. The staff contains a series of notes, including a half note with a fermata, and is marked with **mf**, *cresc.*, and **ff**.

429



Musical staff with a bass clef, key signature of two sharps, and common time. The staff contains a series of notes, including a half note with a fermata, and ends with a double bar line.

436 **Allegro vivace**



f

Musical staff with a bass clef, key signature of two sharps, and common time. The staff contains a series of notes, including a half note with a fermata, and is marked with **f**.

440

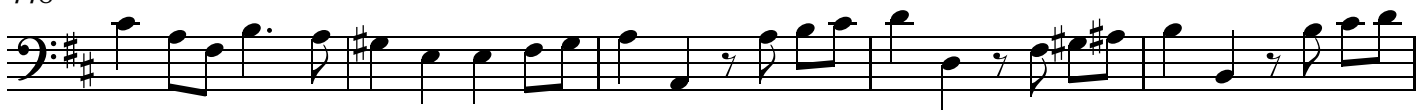


Musical staff with a bass clef, key signature of two sharps, and common time. The staff contains a series of notes, including a half note with a fermata, and ends with a double bar line.

444



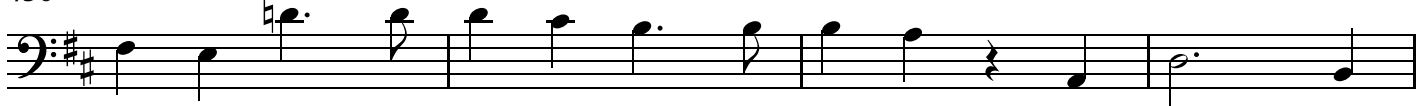
448



453



456



460



467



473



477



481



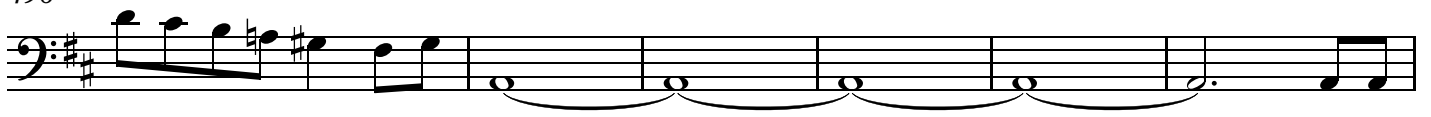
485



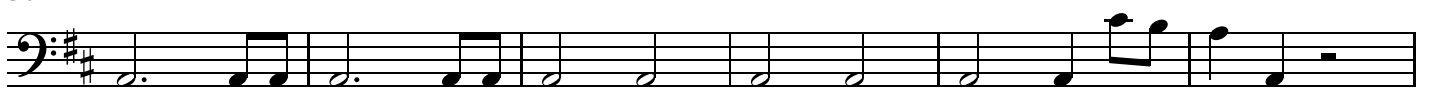
490



496



502



508



513



518



522



526



531



536

