

*grace*

open score for chamber ensemble or string orchestra

Jordan Nobles

*Dedicated to Ensemble Mujirushi*  
North Vancouver, September 2009

# grace

open score for chamber ensemble or string orchestra

Jordan Nobles

## ABOUT THE PIECE

- *grace* was written for, dedicated to and premiered by Ensemble Mujirushi on their 2009 European tour

## PERFORMANCE NOTES

- players proceed independently performing any cell in any order (all cells are in the treble clef)
- players can pause briefly between cells or proceed directly with a different one
- all notes should be soft and quiet throughout the piece
- each performer plays in his/her own time but conscious of, and responsive to, the other players
- avoid playing any recognizable pulse
- cells can be played in any octave as long as they can be played softly and quietly
- on polyphonic instruments notes should be allowed to ring as much as possible, for instance, on the piano, the sustain pedal should be down throughout

## GRACE NOTES

- grace notes can be slow or fast
- the speed at which one plays a grace note should vary throughout the piece
- the grace notes should be performed as if they were bubbles breaking on the still surface of a pond

## HELD NOTES

- each held note should only last as long as a single bow
- do not stop a held note abruptly but rather place a diminuendo at the end
- very little to no vibrato should be used at all, if used it should be very slow

## DURATION

- the duration of the piece can be as long or as short as desired
- players can decide ahead of time how long to play and how to end; whether stopping all together or dropping out one at a time
- players can decide how many cells to play each and the stop playing when after performing them drop out one at a time

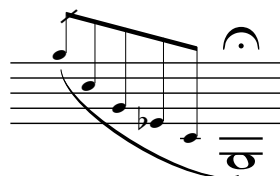
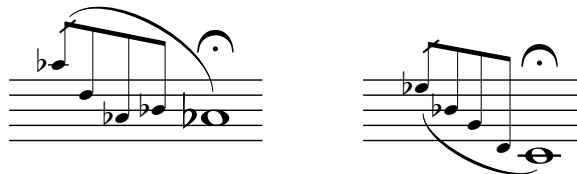
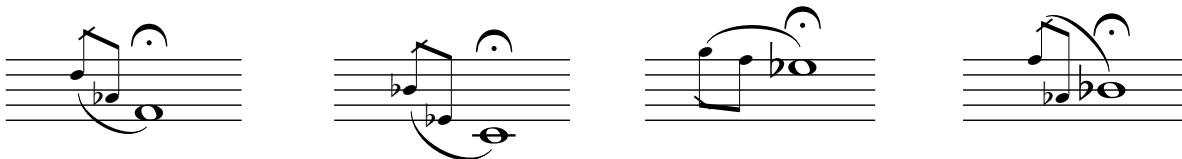
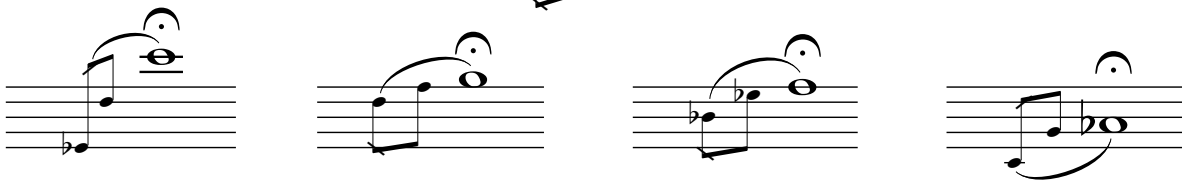
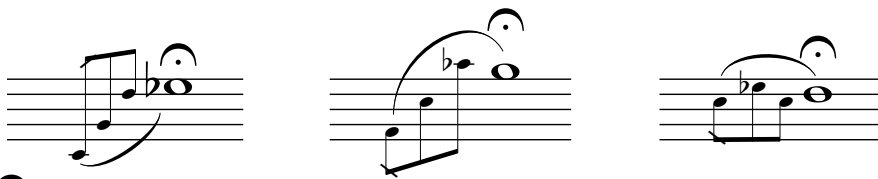
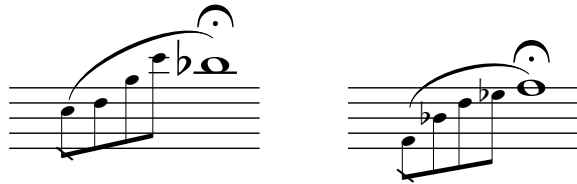
## ALTERNATIVE PERFORMANCE SUGGESTIONS

- players can perform either together on stage or spatially separated throughout the performance space
- or players can enter unto the stage and begin playing one at a time. Also they can end the piece this way in reverse with each player gracefully exiting the stage after finishing
- if conducted then the conductor can choose, on the spot, who enters and when, by cueing musicians to start or stop playing

grace

Jordan Nobles

The first measure of the song 'The Sound of Silence' is shown. It features a treble clef and a key signature of one flat (B-flat). The melody consists of a half note G4, a half note A4, a half note B-flat4, and a half note C5. The bass line consists of a half note F3, a half note G3, a half note A3, and a half note B-flat3. The measure is marked with a '1' in the top right corner.



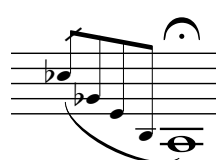
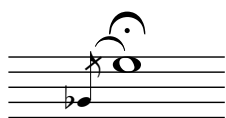
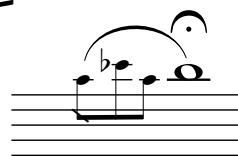
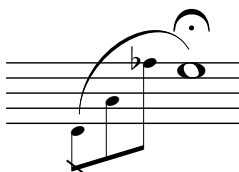
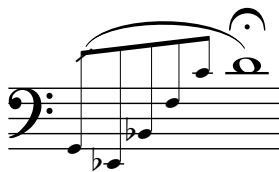
C Score (bass clef)

# grace

*Dedicated to Ensemble Mujirushi*

Jordan Nobles

*any cell, in any octave, in any order  
softly and quietly throughout*



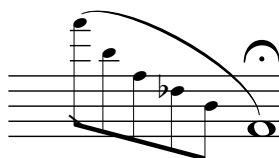
C Score (alto clef)

# grace

*Dedicated to Ensemble Mujirushi*

Jordan Nobles

*any cell, in any octave, in any order  
softly and quietly throughout*

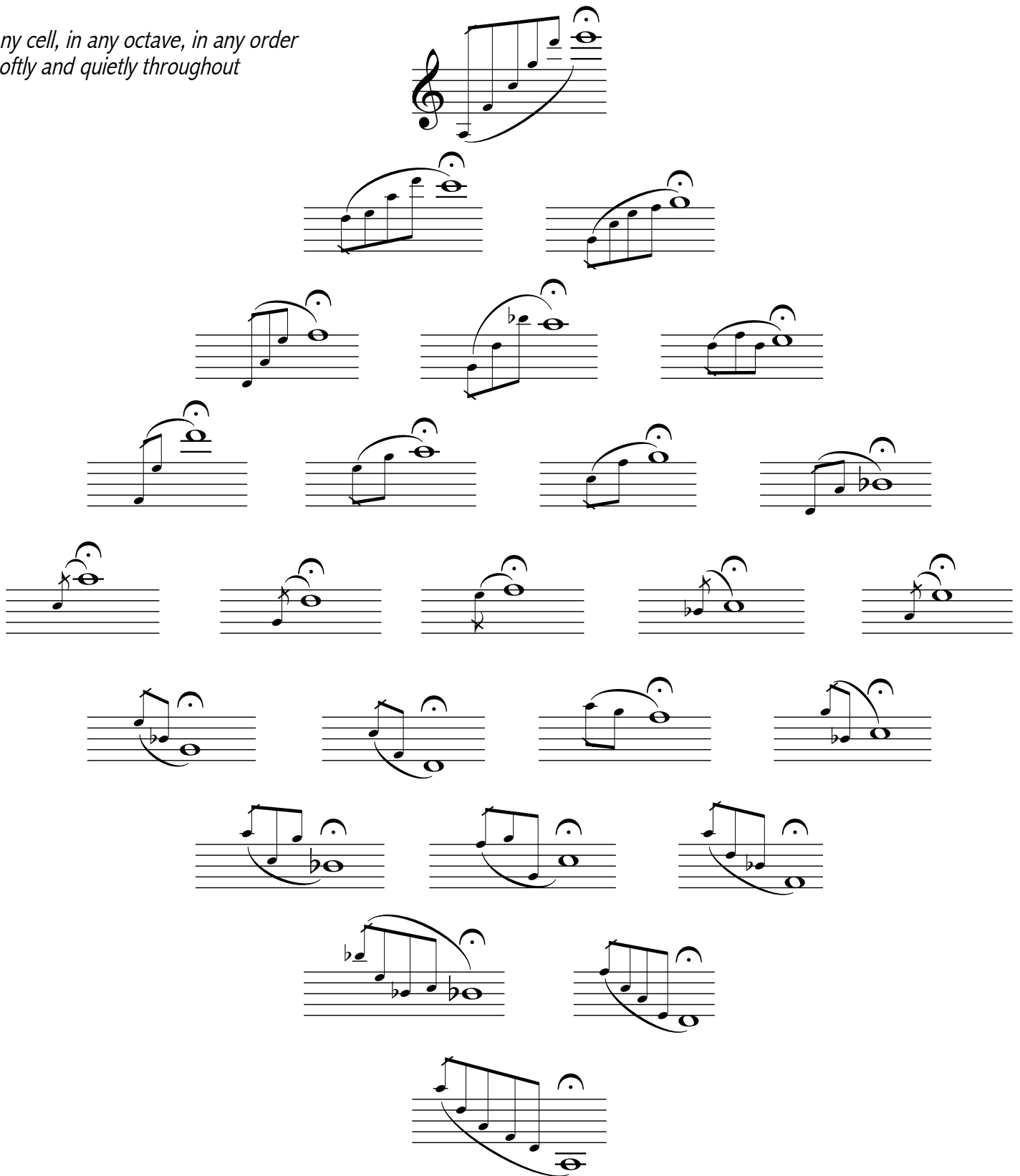


## grace

*Dedicated to Ensemble Mujirushi*

Jordan Nobles

*any cell, in any octave, in any order  
softly and quietly throughout*

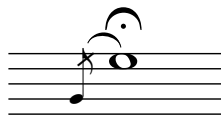
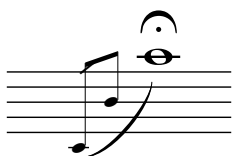
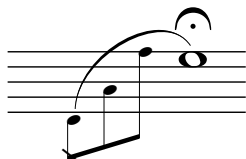
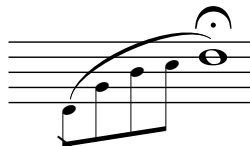
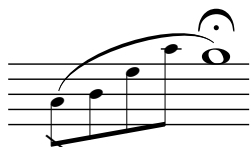
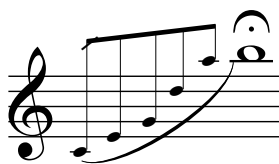


# grace

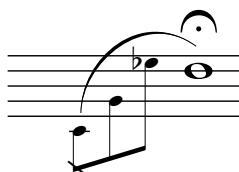
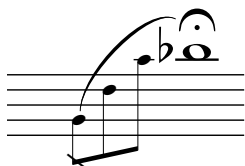
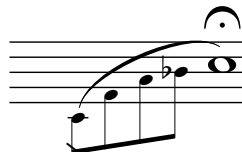
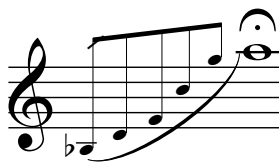
*Dedicated to Ensemble Mujirushi*

Jordan Nobles

*any cell, in any octave, in any order  
softly and quietly throughout*



*any cell, in any octave, in any order  
softly and quietly throughout*





*any cell, in any octave, in any order  
softly and quietly throughout*

