

Missa Solennis in B

zur hochfeierlichen Insultirung

des

Hochwürdigsten Herrn Proclaten

Friederich I.

am 11. April 1854

für

Sopran, Alt, Tenor, Bass, Violino Primo et Secundo Viola,
Oboe Primo et Secundo, Fagotto I. et II.

Alt, Tenor et Bass Trombone

Tromba I. et II., Symphonie

Violen et Violoncello

et

Organo

von

Anton Bruckner

provisorischen Stiftsorganisten.



1850

Miss M. M. M.

at the residence of

Mr. M. M. M.

London

England

The first of the year

has just passed

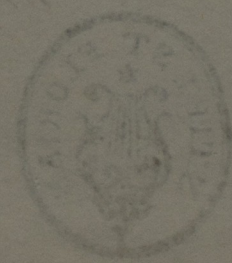
and we are

glad to

hear

from

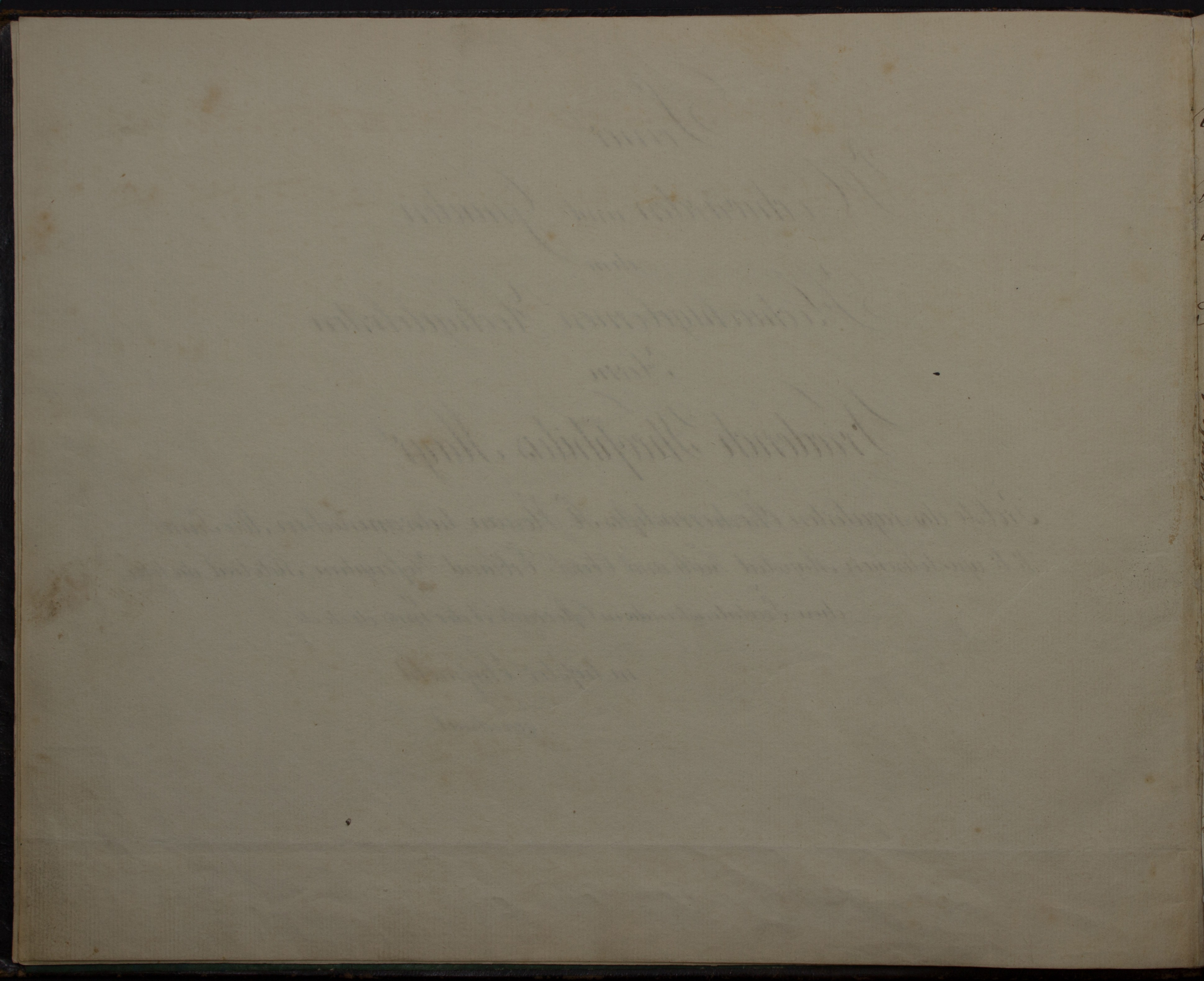
you



Seiner
 Hochwürden und Gnaden
 dem
 Hochwohlgebornen, Hochgelehrten
 Herrn
 Friederich Theophilus Mayer,

Probst des regulirten Hochherrnstiftes St. Florian, lateranensischen Abte, Seiner
 K. K. apostolischen Majestät Rath und Oberst- Erbland-Hofcaplan, Mitglied des löbli-
 chen Prälatenstandes in Oesterreich ob der Enns etc. etc. etc.

in tiefster Ehrfurcht
 gewidmet.



Pyrie.

Andte

Violin I. *mf*

Violin II. *unisono*

Viola *mf*

Oboe I. *p*

Oboe II. *p*

Flute I. *p*

Flute II. *p*

Clarinet *p*

Trumpet *p*

Trombone *p*

Bass *p*



Soprano *p* Pyrie e *mf* Pyrie e e lei son *p* Pyrie e

Alto *p* Pyrie e *mf* Pyrie e e lei son *p* Pyrie e

Tenore *p* Pyrie e *mf* Pyrie e e lei son *p* Pyrie e

Basso *p* Pyrie e *mf* Pyrie e e lei son *p* Pyrie e

Violoncello *p*

Organo *p*

Violin I *mf*

Violin II *mf* *unisono*

Viola

Cello I

Cello II

Double Bass I

Double Bass II

S *mf* *unisono* *mit Org.*

A *mf*

T *mf*

B *mf*

V.C. *mf*

unisono *mit Org.*

mf

Chri-ste elei-son Chri-ste elei-son Chri-ste elei-son Chri-ste elei-son

Violin I, Violin II, Viola, Cello I, Cello II, Double Bass

Soprano, Alto, Tenor 1, Tenor 2, Bass, Chorus

Solm
I. *ff* *pp* *ppp*

Violat
II *unisono* *ff* *pp* *ppp*

Boe.
I
II

Trag.
I
II

A
T
B

S
A
T
B

Vcl.
unisono *mf* *p* *pp*

ppp

Py ri e e le i son Py ri e e lei son e le i son e le i son.
Py ri e e le i son Py ri e e le i son e le i son e le i son.
elei san Py ri e e le i son e le i son e le i son.
elei son Py ri e e le i son e le i son e le i son.

Allo

Gloria

Violin I *mp*

Violin II *mp*

Viola *mp*

Celli I *mp*

Celli II *mp*

Bassoon I

Bassoon II

Clarinet

Flute

Trumpet

Trombone

Drum

Cymbal

Bass Drum

Soprano *mf*

Alto *mf*

Tenore

Basso

Violoncello

Organo

Et in terra pax ho-minibus bone vo-lun-tatis lauda-mus te bene

Et in terra pax ho-minibus bone vo-lun-tatis lauda-mus te bene

Et in terra pax ho-minibus bone vo-lun-tatis lauda-mus te bene

Et in terra pax ho-minibus bone vo-lun-tatis lauda-mus te bene

Viol. I
Viol. II
Viola
Cello I
Cello II
Bass I
Bass II
Tromba I
Tromba II
Timp.

Handwritten musical score for orchestral instruments. The staves are labeled: Viol. I, Viol. II, Viola, Cello I, Cello II, Bass I, Bass II, Tromba I, Tromba II, and Timp. The music is written in a common time signature and includes various notes, rests, and dynamic markings such as *p* (piano) and *f* (forte). There are some handwritten annotations like "lunum" in the Trombone parts.

Sopr.
A.
T.
B.
V.C.
P.

di ci mus se - - - - - a - do ra mus se glo ri fi ca mus se glo ri fi ca mus se
 di ci mus se - - - - - a - do ra mus se glo ri fi ca mus se glo ri fi ca mus se
 di ci mus se - - - - - a - do ra mus se glo ri fi ca mus se glo ri fi ca mus se
 di ci mus se - - - - - a - do ra mus se glo ri fi ca mus se glo ri fi ca mus se

unisono
 6 - 7 *Tasto*
 4 0 3 3 6 4 6 5 2 - 6 4 3 5 4 -

Handwritten musical score for voices and basso continuo. The staves are labeled: Sopr., A., T., B., V.C., and P. The vocal parts (Sopr., A., T., B.) have lyrics in Latin: "di ci mus se - - - - - a - do ra mus se glo ri fi ca mus se glo ri fi ca mus se". The basso continuo part (V.C.) includes figured bass notation: "6 - 7" and "4 0 3 3 6 4 6 5 2 - 6 4 3 5 4 -". There is a handwritten instruction "unisono" and "Tasto" above the V.C. staff. The piece concludes with a *p* (piano) marking.

Violin I.
II.
Viola
Cell. I
II.
Fag.
I
II.
A
T
B
Trombat.
II.
Symp.

S
A
T
B
Vcl.
P

glo ri fi camus te glo ri fi camus te glo ri fi camus te glo ri fi camus te glo ri fi camus
glo ri fi camus te glo ri fi camus te glo ri fi camus te glo ri fi camus te glo ri fi camus
glo ri fi camus te glo ri fi camus te glo ri fi camus te glo ri fi camus te glo ri fi camus
glo ri fi camus te glo ri fi camus te glo ri fi camus te glo ri fi camus te glo ri fi camus

unisono

Violin I. *p*

Violin II. *p*

Viola *p*

Flute I.

Flute II.

Clarinet I.

Clarinet II.

Bassoon

Trumpet I.

Trumpet II.

Tuba

Drum

Cymbal

Soprano *Solo*

Alto *Gratias*

Tenor

Bass

V. & C. *unisono*

Piano *Tasto*

Tutti

propter magnam gloriam tuam

propter magnam gloriam tuam

propter magnam gloriam tuam

propter magnam gloriam tuam

Solo

Domine

Tasto

Violin I. *mf*

Violin II. *mf* *unisono*

Viola *mf*

Flute I.

Flute II.

Oboe I.

Oboe II.

Clarinet I.

Clarinet II.

Bassoon I.

Bassoon II.

Trumpet I.

Trumpet II.

Tympani.

Tutti

Soprano: De us Pa ter om ni - po tens Do mi ne Fi li - us ni

Alto: De us Pa ter om ni - po tens Do mi ne Fi li - us ni

Tenore: De us Pa ter om ni - po tens Do mi ne Fi li - us ni

Basso: De us Pa ter om ni - po tens Do mi ne Fi li - us ni

Chorus: Deus Rex cae le stis Deus Pa ter om ni - po tens Do mi ne Fi li - us ni

Fig. 44

Violin I
 II
 Viola
 Cello I
 II
 Bass I
 II
 Trumpet I
 II
 Trombone I
 II
 Tuba
 Drums
 Timpani

Agnus Dei

Soprano
 Alto
 Tenor
 Bass
 Chorus

ge-ni-te Je-su Je-su Chris-te Do-mine Deus Fi-li-us Pa-tris Fi-li-us Pa-tris

ge-ni-te Je-su Je-su Chris-te Do-mine Deus Fi-li-us Pa-tris Fi-li-us Pa-tris

ge-ni-te Je-su Je-su Chris-te Do-mine Deus Fi-li-us Pa-tris Fi-li-us Pa-tris

ge-ni-te Je-su Je-su Chris-te Do-mine Deus Fi-li-us Pa-tris Fi-li-us Pa-tris

Agnus Dei

4/2 = 6 6/4 6 5/4 4/3 *Lento* 6 - 6. 6 4/3

Violin I.
Violin II.
Viola
Vcllo I.
Vcllo II.
Fag. I.
Fag. II.
A.
T.
B.
Tromba I.
Tromba II.
Symph.
S.
A.
T.
B.
P. C.
P.

Handwritten musical score for orchestra and voices. The score includes staves for Violin I & II, Viola, Violoncello I & II, Fagotto I & II, Tromba I & II, and a vocal line with lyrics. The music is in a major key with a 3/4 time signature. The vocal line consists of five staves labeled S, A, T, B, and P.C. The lyrics are "Suis", "Se", "lius", "Pa", "suis". The P.C. part includes figured bass notation: 5 3 6 3, 5 6 4 2, 6 6 4 2 6 3, 8 3, 6 6 4 5.

Qui tollis

Andante

cresc

Decresc.

Violini I. *pp* *Solo*

Violini II. *pp*

Viola *pp*

Oboe *pp*

S

A

T

B

Cello *Solo*

Contra *Solo*

Organo *Tasto*

Violini I.

Violini II.

Viola

Oboe

S

A

T

B

Cello

Organo

Tutti *pp* *Solo*

Qui tollis *pec ca* *la mundi* *mise* *re* *re* *miserere* *re* *mi* *se* *re* *re* *no* *bis*

Qui tollis *pec ca* *la mundi*

Violin I.

II.

Viola

Oboe

S

A

T

B

Cello

Oct. V.

Violin I.

II.

Viola

Oboe

S

A

T

B

Cello

Pet. V.

Handwritten musical score for a symphony. The score is written on multiple staves, including strings (Violin I & II, Viola, Cello, Oct. V.), woodwinds (Oboe), and vocal parts (Soprano, Alto, Tenor, Bass). The lyrics are in Latin, including "In sus ci pe de pre ca ti onem no stram" and "mi se re re no bis". The music features various dynamics such as *pp*, *ppp*, and *ppp*, and includes performance markings like *Tutti*, *Solo*, and *Adagio*. The notation includes notes, rests, and bar lines.

Handwritten musical notation for a Solo Bass part, including the lyrics "re re no bis" and "mi se re re no bis".

Handwritten notes in the right margin: "Solo Bass", "re re no bis", "mi se re re no bis".

1917

Fd. 10a

Leubrag
zum Anzug
des Pfaffen
des Gloria
in Bruckner's
Missa
solemnis
in
B-dur

Violin I

Violin II

Viola

Oboe I

Oboe II

Fagott I

Fagott II

Harmonium

Tenor

Bass

Trombe I

Trombe II

Tymp.

Sopr.

Alt.

Tenor

Bass

Violon Cello

Org.

Stiftsarchiv
St. Florian

Stiftsarchiv
St. Florian

vertaktet!

Flauto 1
 Flauto 2
 Oboe I
 Oboe II
 Fag. I
 Trombone alto
 Trombone Ten.
 Trombone Basso
 Tromba I
 Tromba II
 Tymp.
 Sopr.
 Alt.
 Ten.
 Bass.
 Viol. & Celli
 Org.

men, a - men a - - men a - - men, a - men, a - men,
men, a - men a - men, a - - men, a - men, a - men.
men a - men a - men, a - men, a - men, a - men,
men a - men a - men, a - men, a - men, a - men.

Andante

Handwritten signature

Quoniam

Allegro

Violin I. *mf* *p*

Violin II. *mf* *p*

Viola *mf* *p*

Violoncello I. *mf* *p*

Violoncello II. *mf* *p*

Double Bass I. *mf* *p*

Double Bass II. *mf* *p*

Trumpet I. *mf* *p*

Trumpet II. *mf* *p*

Trombone I. *mf* *p*

Trombone II. *mf* *p*

Tuba *mf* *p*

Drum *mf* *p*

Snare *mf* *p*

Organ *mf* *p*

Solo
S. Quoniam tu solus sanctus
A. tu solus Dominus
T. tu solus sanctus
B. tu solus sanctus

Tutti
Tutti *mf* tu solus sanctus
Tutti *mf* tu solus sanctus
Tutti *mf* tu solus sanctus

Solo
Solo tu solus Dominus
Solo tu solus Dominus
Solo tu solus Dominus

Tutti
Tutti tu solus Dominus
Tutti tu solus Dominus
Tutti tu solus Dominus

Alto
Alto unisono 2. Dig.
Alto unisono 2. Dig.

Tasto
Tasto
Tasto
Tasto

Violin I.
II.
Viola
Cello I
II.
Sax. I.
II.
A
B
C
P I.
P II.
Symp.

S
A
T
B
C.
Org. et
Violon

Allo

Violin I. II. Viola Cae I. II. Sag. I. II. A S B Corn. I. II. Symp. S. A S B C. Org.

Dei Pa-tris amen
 Dei Pa-tris amen
 Dei Pa-tris amen
 in gloria Dei Patris amen
 In glo-ria Dei Pa-tris a-men in gloria Dei Pa-tris a-

Violin I
 II
 Viola
 Violoncello I
 II
 Fagot
 II
 Klarinetten
 Basson
 Trompeten
 II
 Tympan

Soprano
 Alto
 Tenor
 Bass
 V.C.
 Org.

De - i Pa - tris a - men a - men a - men in glo - ria De - i Pa - tris a - men in glo - ria De - i
 De - i Pa - tris a - men a - men a - men in glo - ria De - i Pa - tris a - men in glo - ria De - i
 De - i Pa - tris a - men a - men in glo - ria De - i Pa - tris a - men in glo - ria De - i
 De - i Pa - tris a - men a - men a - men in glo - ria De - i Pa - tris a - men in glo - ria De - i

Violin I.
 II.
 Viola
 Violoncello I.
 II.
 Fagot I.
 II.
 Tromba I.
 II.
 Symp.

Soprano
 Alto
 Tenor
 Bass
 Cello
 P.
 et C.

men a = men a = men a = men a
men a = men a = men a = men a
men a = men a = men a = men a
men a = men a = men a = men a

in gloria De i Patris a men a men in gloria
in gloria De i Patris a men a men in gloria
in gloria De i Patris a men a men in gloria
in gloria De i Patris a men a men in gloria

Violint. I. *le* *le*

II.

Viola

Viol. I.

II.

Clav. I.

II.

Org.

Chor. I.

II.

Trump.

I.

II.

Tymp.

Soprano

Alto

Tenore

Basso

Org.

Fig.

156

Dei Patris a - men a - men in gloria Dei in gloria Dei in gloria Dei in gloria Dei