

# PRELUDE in B-Flat MAJOR

(from: *Alcina, Act I, Scena 14, HWV 34*)

Score (02':53'')

for Trumpet and Organ

Georg Friedrich Händel (1685 - 1759)

Arr. Michel Rondeau

Allegro ♩ = 110

Trumpet in C

Organ

This system contains the first six measures of the score. The Trumpet in C part is shown as a single staff with a whole rest in every measure. The Organ part is shown as a grand staff with two staves. The right hand plays a melodic line with eighth and sixteenth notes, including a trill in measure 6. The left hand plays a simple bass line with quarter notes and rests.

C Tpt.

Org.

This system contains measures 7 through 12. The C Trumpet part remains silent with whole rests. The Organ part continues with the same melodic and bass lines as the previous system, featuring trills in measures 8, 10, and 12.

C Tpt.

Org.

This system contains measures 13 through 19. The C Trumpet part begins to play in measure 13 with a melodic line. The Organ part continues with its accompaniment, including a trill in measure 13.

C Tpt.

Org.

This system contains measures 20 through 25. The C Trumpet part plays a melodic line with a trill in measure 21. The Organ part continues with its accompaniment.

PRELUDE in B-Flat MAJOR - HWV 34 - Händel - Score

2  
26

C Tpt.

Org.

32

C Tpt.

Org.

38

C Tpt.

Org.

44

C Tpt.

Org.

PRELUDE in B-Flat MAJOR - HWV 34 - Händel - Score

C Tpt.

Org.

50

C Tpt.

Org.

55

C Tpt.

Org.

61

C Tpt.

Org.

68

PRELUDE in B-Flat MAJOR - HWV 34 - Händel - Score

4  
74

C Tpt.

Org.



80

C Tpt.

Org.

Fine

Fine



86

C Tpt.

Org.



92

C Tpt.

Org.



98

C Tpt.

Org.

102

C Tpt.

Org.

D.C. al Fine

D.C. al Fine

# PRELUDE in B-Flat MAJOR

(from: *Alcina*, Act I, Scena 14, HWV 34)

for Trumpet and Organ

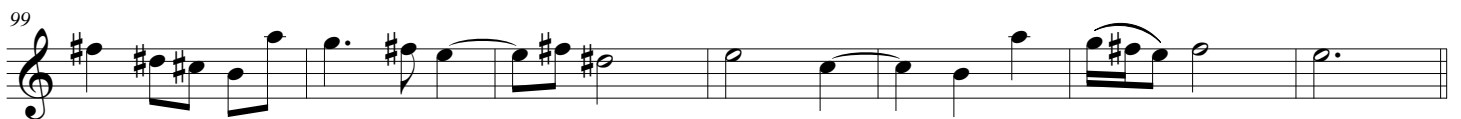
Georg Friedrich Händel (1685 - 1759)

Arr. Michel Rondeau

## Trumpet in B $\flat$

Allegro  $\text{♩} = 110$

14



D.C. al Fine

# PRELUDE in B-Flat MAJOR

(from: *Alcina, Act I, Scena 14, HWV 34*)

for Trumpet and Organ

## Trumpet in C

Georg Friedrich Händel (1685 - 1759)

Arr. Michel Rondeau

Allegro ♩ = 110

14



D.C. al Fine

# PRELUDE in B-Flat MAJOR

(from: *Alcina*, Act I, Scena 14, HWV 34)

for Trumpet and Organ

Georg Friedrich Händel (1685 - 1759)

Arr. Michel Rondeau

## Organ

Trumpet in C

Allegro ♩ = 110

Organ

C Tpt.

Org.

Org.

C Tpt.

Org.

Org.

C Tpt.

Org.

Org.



PRELUDE in B-Flat MAJOR - HWV 34 - Händel - Organ

2  
26

C Tpt.

Org.

32

C Tpt.

Org.

38

C Tpt.

Org.

44

C Tpt.

Org.

PRELUDE in B-Flat MAJOR - HWV 34 - Händel - Organ

C Tpt.

Org.

50

C Tpt.

Org.

55

C Tpt.

Org.

61

C Tpt.

Org.

68

PRELUDE in B-Flat MAJOR - HWV 34 - Händel - Organ

4

C Tpt.

74

Org.

C Tpt.

80

Org.

Fine

C Tpt.

86

Org.

C Tpt.

92

Org.

PRELUDE in B-Flat MAJOR - HWV 34 - Händel - Organ

98

C Tpt.

Org.

Detailed description: This system contains measures 98 through 101. The C Tpt. part (top staff) begins with a whole rest in measure 98, followed by a half note B-flat in measure 99, a quarter note G in measure 100, and a half note F in measure 101. The Organ part (bottom two staves) features a rhythmic pattern of eighth notes in the right hand and quarter notes in the left hand. Measure 98 has a whole rest in the left hand. Measure 99 has a half note G in the left hand. Measure 100 has a half note F in the left hand. Measure 101 has a half note E in the left hand.

102

C Tpt.

D.C. al Fine

102

Org.

D.C. al Fine

Detailed description: This system contains measures 102 through 105. The C Tpt. part (top staff) has a half note B-flat in measure 102, a quarter note G in measure 103, a quarter note F in measure 104, and a half note E in measure 105. The Organ part (bottom two staves) continues with the same rhythmic pattern. Measure 102 has a whole rest in the left hand. Measure 103 has a half note G in the left hand. Measure 104 has a half note F in the left hand. Measure 105 has a half note E in the left hand. Both parts end with a double bar line and the instruction 'D.C. al Fine'.