

# PRELUDE in G MINOR

(from: 'Deidamio', Act II, Scena 9, HWV 42)

Score (03':14")

for Trumpet and Organ

Georg Friedrich Händel (1685 - 1759)

Arr. Michel Rondeau

Allegro moderato ♩ = 100

Trumpet in C

Organ

This system contains the first four measures of the score. The Trumpet in C part is in the upper staff, and the Organ part is in the lower two staves. The key signature is G minor (two flats) and the time signature is common time (C). The tempo is marked 'Allegro moderato' with a quarter note equal to 100 beats per minute. The organ part features a complex texture with chords and moving lines in both hands.

C Tpt.

Org.

This system contains measures 5 through 7. The C Trumpet part continues with a melodic line, and the Organ part provides harmonic support with chords and moving lines in both hands.

C Tpt.

Org.

This system contains measures 8 through 11. The C Trumpet part includes trills (tr) in measures 10 and 11. The Organ part continues with its complex texture.

C Tpt.

Org.

This system contains measures 12 through 15. The C Trumpet part has rests in measures 12 and 13, then enters in measure 14. The Organ part continues with its complex texture.

## PRELUDE in G MINOR - HWV 42 - Händel - Score

C Tpt.

Org.

17

C Tpt.

Org.

20

C Tpt.

Org.

24

C Tpt.

Org.

28

PRELUDE in G MINOR - HWV 42 - Händel - Score

C Tpt.

Org.

31

C Tpt.

Org.

34

C Tpt.

Org.

38

C Tpt.

Org.

41

## PRELUDE in G MINOR - HWV 42 - Händel - Score

C Tpt.

Org.

Measures 44-46 of the score. The C Tpt. part begins with a rest, followed by a melodic line. The Organ part consists of two staves with chords and moving lines.

C Tpt.

Org.

Measures 47-49 of the score. The C Tpt. part has a melodic line with some rests. The Organ part continues with chords and moving lines.

C Tpt.

Org.

Measures 50-52 of the score. The C Tpt. part has a melodic line with some rests. The Organ part continues with chords and moving lines.

C Tpt.

Org.

Measures 53-55 of the score. The C Tpt. part has a melodic line with a trill (tr) in measure 54. The Organ part continues with chords and moving lines.

PRELUDE in G MINOR - HWV 42 - Händel - Score

57

C Tpt.

Org.

59

C Tpt.

Org.

62

C Tpt.

Org.

Fine

65

C Tpt.

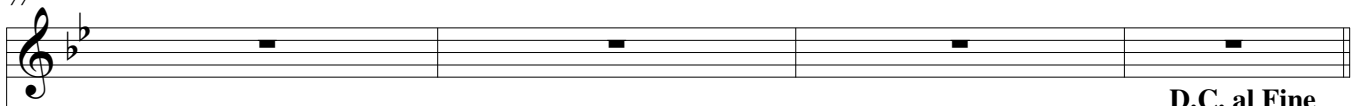

Org.

PRELUDE in G MINOR - HWV 42 - Händel - Score

C Tpt.    
 Org. 

C Tpt.    
 Org. 

C Tpt.    
 Org. 

C Tpt.    
 Org.    
 D.C. al Fine

# PRELUDE in G MINOR

(from: 'Deidamio', Act II, Scena 9, HWV 42)

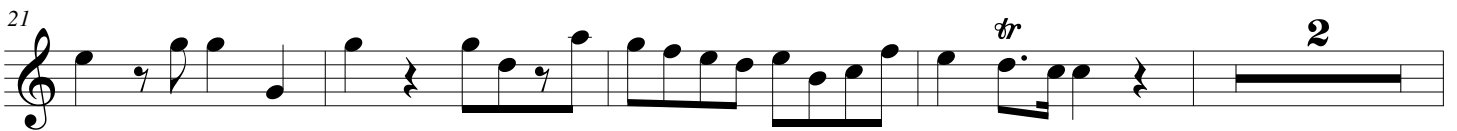
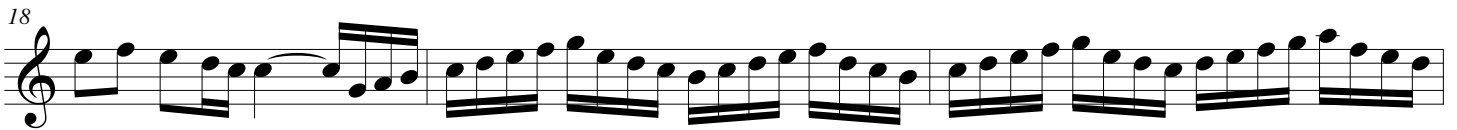
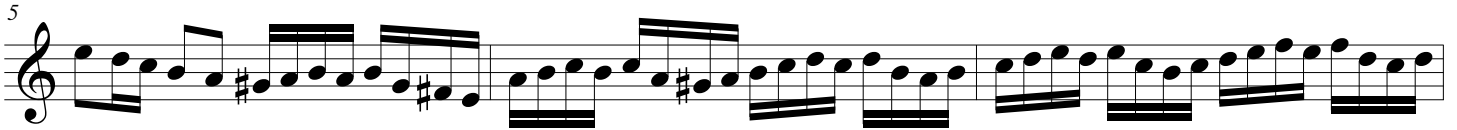
for Trumpet and Organ

## Trumpet in B $\flat$

Georg Friedrich Händel (1685 - 1759)

Arr. Michel Rondeau

Allegro moderato  $\text{♩} = 100$



2 PRELUDE in G MINOR - HWV 42 - Händel - B $\flat$  Trumpet

34

39

43

47

51

55

65

68

71

Fine

D.C. al Fine



# PRELUDE in G MINOR

(from: 'Deidamio', Act II, Scena 9, HWV 42)

for Trumpet and Organ

## Trumpet in C

Georg Friedrich Händel (1685 - 1759)

Arr. Michel Rondeau

Allegro moderato  $\text{♩} = 100$

5

8 *tr* 2

14

18

21 *tr* 2

27

31

2 PRELUDE in G MINOR - HWV 42 - Händel - C Trumpet

34

39

43

47

51

55

65

68

71

# PRELUDE in G MINOR

(from: 'Deidamio', Act II, Scena 9, HWV 42)

for Trumpet and Organ

Georg Friedrich Händel (1685 - 1759)

Arr. Michel Rondeau

## Organ

Trumpet in C

Allegro moderato ♩ = 100

C Tpt.

Org.

C Tpt.

Org.

C Tpt.

Org.

C Tpt.

17

Org.

C Tpt.

20

Org.

C Tpt.

24

*tr*

Org.

C Tpt.

28

Org.

C Tpt.

Org.

Measures 31-33 of the prelude. The C Trumpet part (top staff) features a melodic line with eighth and sixteenth notes. The Organ part (middle and bottom staves) provides harmonic support with chords and a steady bass line.

C Tpt.

Org.

Measures 34-37. The C Trumpet part continues with a melodic line. The Organ part features a more active texture with sixteenth-note patterns in the right hand and a consistent bass line.

C Tpt.

Org.

Measures 38-40. The C Trumpet part has a more sparse melodic line. The Organ part features a prominent sixteenth-note figure in the right hand, creating a rhythmic drive.

C Tpt.

Org.

Measures 41-43. The C Trumpet part continues with a melodic line. The Organ part features a complex texture with sixteenth-note patterns in the right hand and a steady bass line.

C Tpt.

Org.

Measures 44-46 of the prelude. The C Trumpet part (top staff) begins with a rest in measure 44, followed by a melodic line in measures 45 and 46. The Organ part (middle and bottom staves) features a complex texture with sixteenth-note runs in the right hand and a steady bass line in the left hand.

C Tpt.

Org.

Measures 47-49. The C Trumpet part has a melodic line in measure 47, a rest in measure 48, and resumes in measure 49. The Organ part continues with intricate sixteenth-note patterns in the right hand and a rhythmic bass line in the left hand.

C Tpt.

Org.

Measures 50-52. The C Trumpet part plays a continuous melodic line of sixteenth notes. The Organ part maintains its complex texture with sixteenth-note runs in the right hand and a steady bass line in the left hand.

C Tpt.

Org.

Measures 53-55. The C Trumpet part has a melodic line in measure 53, a rest in measure 54, and resumes in measure 55. The Organ part continues with sixteenth-note runs in the right hand and a steady bass line in the left hand. A trill (tr) is marked above the final note of the C Trumpet part in measure 55.

57

C Tpt.

Org.

59

C Tpt.

Org.

62

C Tpt.

Org.

Fine

65

C Tpt.

Org.

C Tpt.

68

Org.

Detailed description: This system covers measures 68 to 70. The C Tpt. part (top staff) begins with a treble clef, a key signature of two flats (B-flat and E-flat), and a common time signature. It features a melodic line with eighth and sixteenth notes, including a trill in measure 69. The Organ part (bottom two staves) consists of a right-hand staff with a treble clef and a left-hand staff with a bass clef. The right hand plays a complex texture of sixteenth-note runs and chords, while the left hand provides a steady bass line with eighth notes and rests.

C Tpt.

71

Org.

Detailed description: This system covers measures 71 to 73. The C Tpt. part (top staff) has a treble clef and two flats. It shows a melodic line with a trill in measure 72. The Organ part (bottom two staves) continues with a right-hand staff in treble clef and a left-hand staff in bass clef. The right hand features dense sixteenth-note passages and block chords, while the left hand maintains a rhythmic bass line.

C Tpt.

74

Org.

Detailed description: This system covers measures 74 to 76. The C Tpt. part (top staff) is mostly silent, indicated by a whole rest in each measure. The Organ part (bottom two staves) continues with a right-hand staff in treble clef and a left-hand staff in bass clef. The right hand plays a series of sixteenth-note runs and chords, while the left hand provides a consistent bass line.

C Tpt.

77

Org.

D.C. al Fine

Detailed description: This system covers measures 77 to 80. The C Tpt. part (top staff) is silent, with whole rests in each measure. The Organ part (bottom two staves) continues with a right-hand staff in treble clef and a left-hand staff in bass clef. The right hand features a final, intricate sixteenth-note passage. The left hand concludes with a bass line. The instruction "D.C. al Fine" appears in both the C Tpt. and Organ staves at the end of the system.