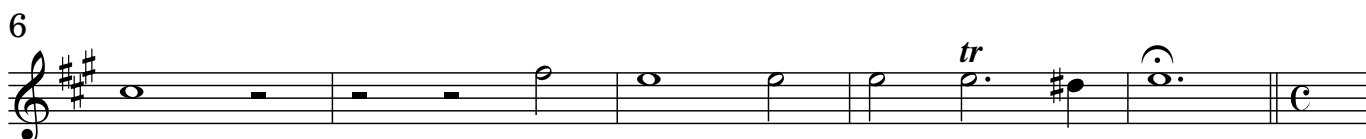


Sonata III (Armonico Tributo)

Violino 1

Georg Muffat

1. Grave.



2. Allegro.



44

47 T S

52 T S

56 T

60 S T S tr S

64 p T f p S tr tr

68 T S T S

73 T S T

77 S T

80 tr S T tr S f

Detailed description: This image shows a page of musical notation for Violino 1, measures 44 through 80. The music is in G major (one sharp) and 3/4 time. The notation includes various rhythmic patterns, including eighth and sixteenth notes, and rests. Performance markings such as *f* (forte), *p* (piano), and *tr* (trill) are present. Technical markings 'T' and 'S' are placed above the notes to indicate specific techniques. The score concludes with a double bar line and a repeat sign.

3. Corrente.

Musical score for the first three staves of "3. Corrente." in G major, 4/4 time. The first staff (measures 1-4) begins with a trill (T) on G4. The second staff (measures 5-7) features a slur (S) over measures 5-6 and a piano (p) dynamic. The third staff (measures 8-11) starts with a trill (T) on G4, a forte (f) dynamic, and ends with a trill (tr) on G4. The fourth staff (measures 12-15) contains three trills (tr) on G4, B4, and G4. The fifth staff (measures 16-19) begins with a slur (S) on G4, a piano (p) dynamic, and contains four trills (tr) on G4, B4, G4, and B4.

4. Adagio.

Musical score for the first two staves of "4. Adagio." in G major, common time. The first staff (measures 1-5) includes a trill (tr) on G4, a slur (S) on G4, and a trill (T) on G4. The second staff (measures 6-9) continues the melodic line. The third staff (measures 10-13) features two trills (tr) on G4 and B4, and ends with a fermata on G4.

5. Gavotta.

Musical score for the first two staves of "5. Gavotta." in G major, common time. The first staff (measures 1-4) contains a slur (S) on G4, a trill (tr) on G4, and a trill (T) on G4. The second staff (measures 5-8) features a trill (tr) on G4, a repeat sign, a slur (S) on G4, and a trill (tr) on G4.

10 *f* T *tr.* *p* S *tr.*

14 *f* T *p* S *tr.* *f* T *tr.*

6. Rondeau.

S *tr.* T *tr.* *tr.* S *p*

12 *f* T *tr.* S *tr.* *tr.*

23 T *tr.* *tr.* *tr.*

32 *tr.* S *tr.* T *tr.* *tr.* S *p*

42 *f* T *tr.* S

53 *tr.* *tr.* T

60 *tr.* S

67 *tr.* T *tr.* *tr.* S *p* T *f* *tr.*