

# LA FLUTE ENCHANTÉE

OPÉRA COMIQUE.

## OUVERTURE.

Bassons.



De Mozart par TAVAN.

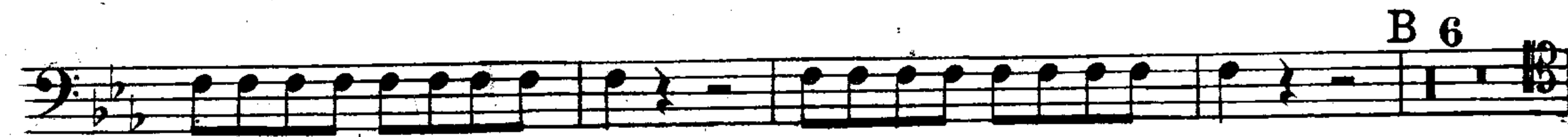
Andante.



Allegro.

10

a 2.



Bassons.

*p* *f* *C a 2.* *p* *f* *a 2.* *p* *D* *cresc.* *f* *Andante.* *f* *Allegro.* *6 a 2.* *p* *a 2.* *E* *f* *1 F 2* *19* *p* *1* *2* *1*

First staff of music, bass clef, key signature of two flats. It begins with a series of chords and then transitions into a melodic line with slurs. A dynamic marking of *cresc.* is placed below the staff.

Second staff of music, bass clef, key signature of two flats. It features a melodic line with slurs and a dynamic marking of *f*. Above the staff, there are markings "a 2" and "G a 2".

Third staff of music, bass clef, key signature of two flats. It contains a melodic line with slurs and a dynamic marking of *f*.

Fourth staff of music, bass clef, key signature of two flats. It features a melodic line with slurs and a dynamic marking of *ff*.

Fifth staff of music, bass clef, key signature of two flats. It contains a melodic line with slurs.

Sixth staff of music, bass clef, key signature of two flats. It features a melodic line with slurs and a dynamic marking of *mf*. Above the staff, there are markings "H 2" and "10".

Seventh staff of music, bass clef, key signature of two flats. It contains a melodic line with slurs and a dynamic marking of *p*.

Eighth staff of music, bass clef, key signature of two flats. It features a melodic line with slurs and a dynamic marking of *f*. Above the staff, there is a marking "a 2".

Ninth staff of music, bass clef, key signature of two flats. It contains a melodic line with slurs and a dynamic marking of *p*. Above the staff, there is a marking "a 2".

Tenth staff of music, bass clef, key signature of two flats. It features a melodic line with slurs and dynamic markings of *p*, *cresc.*, and *f*. Above the staff, there are markings "1 2" and "a 2".

Eleventh staff of music, bass clef, key signature of two flats. It contains a melodic line with slurs.

Twelfth staff of music, bass clef, key signature of two flats. It features a melodic line with slurs.

Thirteenth staff of music, bass clef, key signature of two flats. It contains a melodic line with slurs.