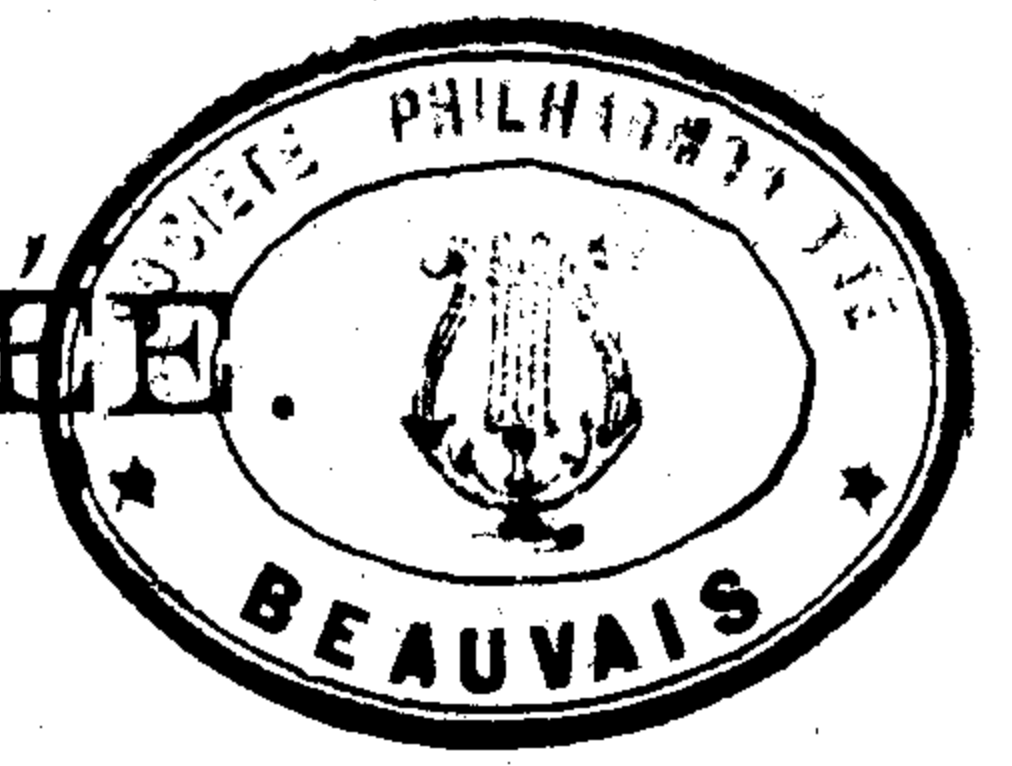


(494)

LA FLUTE ENCHANTÉE.

OPÉRA COMIQUE.

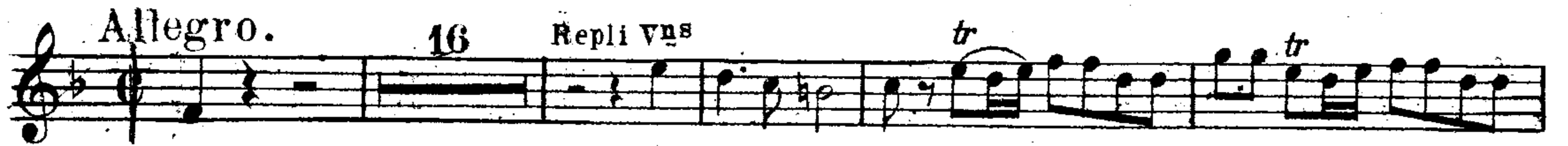
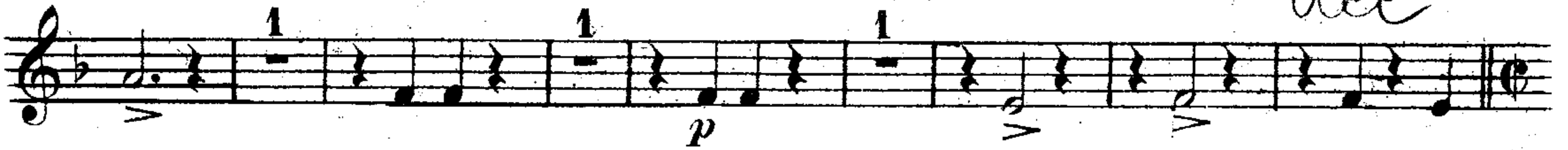
O U V E R T U R E .



1^{er} Cornet en Si^b

De Arrangée par
MOZART.- TAVAN.

Andante.



10

1^{er} Cornet en Si^b

E Cornet.
f

1 F 12

Repli Vns **Cl.** **Cors.** **4** **Repli Vns**
p

G Cornet.
f

ff

H 7

p *f*

I 4
f

P *A* *P* *A*

D *V*

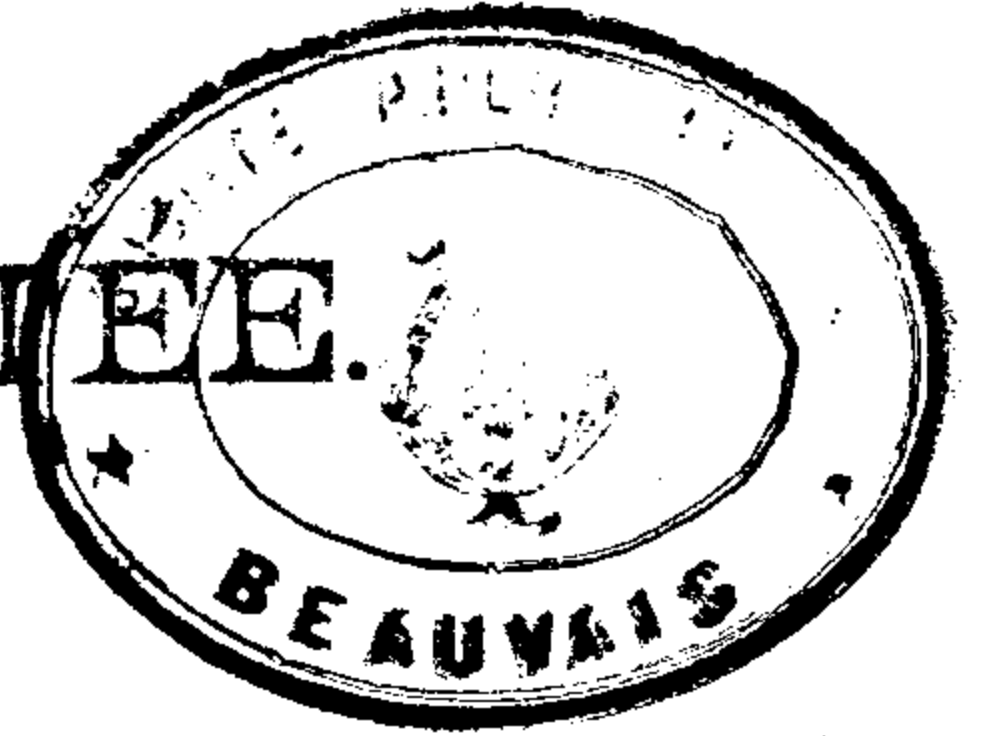
Detailed description: This page contains a musical score for the first cornet in B-flat. It consists of ten staves of music. The first staff is for the E Cornet, starting with a forte (*f*) dynamic. The second staff is a woodwind part, possibly for a flute, with a first ending bracket labeled '1 F 12'. The third staff is a woodwind part, possibly for a clarinet, with a piano (*p*) dynamic and a first ending bracket labeled '4'. The fourth staff is for the G Cornet, starting with a forte (*f*) dynamic. The fifth staff has a fortissimo (*ff*) dynamic. The sixth staff has a first ending bracket labeled 'H 7'. The seventh staff has a piano (*p*) dynamic followed by a forte (*f*) dynamic. The eighth staff has a first ending bracket labeled 'I 4' and a forte (*f*) dynamic. The ninth staff has a piano (*p*) dynamic and a first ending bracket labeled 'P A P A'. The tenth staff has a piano (*p*) dynamic and a first ending bracket labeled 'D V'.

(494)

LA FLUTE ENCHANTEE.

OPÉRA COMIQUE.

O U V E R T U R E.



2^e Cornet en Si^b

De Arrangée
par
MOZART-TAVAN.

Andante.

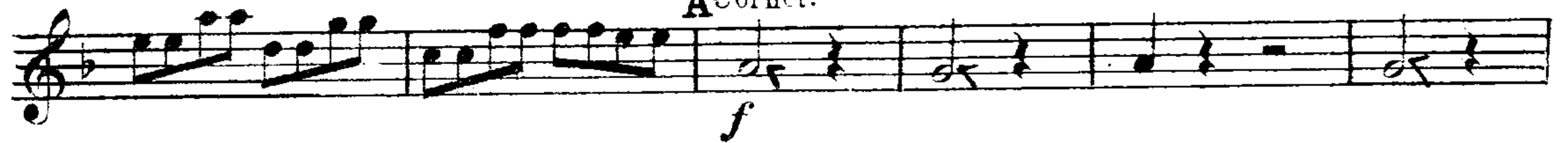


Allegro.

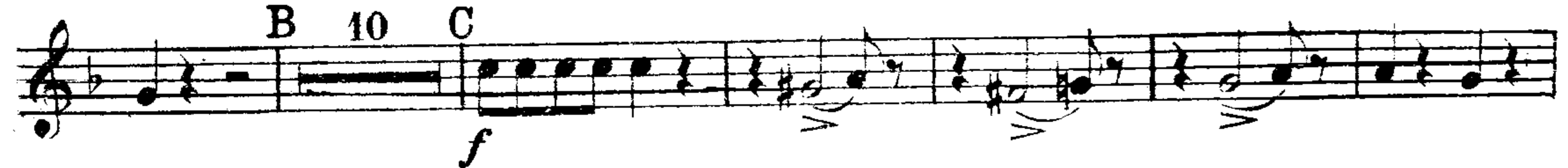
16 repli vns



A Cornet.



B 10 C



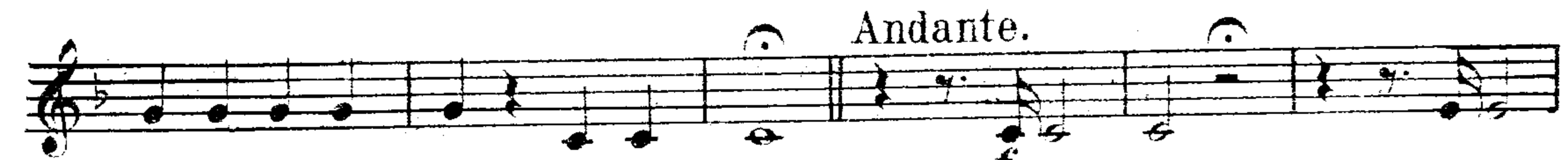
4



D 4



Andante.



Allegro.
10

repli vns



2^e Cornet en Si^b

E Cornet.
f

1 F 21 repli VHS

G Cornet.
f

f

H 7
p

f

p *f*

I 4
f

p *p* *f* *p*

Detailed description: This page contains a musical score for the 2nd Cornet in B-flat. It features two main parts: E Cornet and G Cornet. The E Cornet part begins with a dynamic marking of *f* and includes a section marked '1 F 21 repli VHS'. The G Cornet part also starts with *f* and includes a section marked 'H 7' with a dynamic marking of *p*. The score is written on ten staves, with various dynamics such as *f* (forte) and *p* (piano) used throughout. There are also performance markings like accents and slurs. The key signature has two flats (B-flat and E-flat), and the time signature is 4/4.