

S. 5526.

# 50 AIRS ANGLOIS

*Dont les 20 Premiers sont à un Dessus seul les 10 suivants à 2 Dessus*

*& les 20 Derniers à un Dessus & une Basse . Choisis & mis en*

*ordre par*

## GEORGE BINGHAM

*& Dédies à Monsieur*

## PIERRE DE ROODE

*A Amsterdam*

*Chez Estienne Roger & M: C: Le Cene  
Libraire*

*Westphal.*



N<sup>o</sup> 211

Fluto Secondo

Handwritten musical notation for the first staff of the Flute 2 part. It begins with a treble clef and a key signature of one sharp (F#). The melody consists of eighth and sixteenth notes, with some slurs and accents. A first ending bracket is visible at the end of the staff, marked with a '1' and a 'W'.

Overture 21

Handwritten musical notation for the second staff. It features a treble clef and a key signature of one sharp. The notation includes a repeat sign with a first ending bracket and a '3' below it, indicating a triplet. The melody continues with eighth and sixteenth notes.

Handwritten musical notation for the third staff. It continues the melody with a treble clef and a key signature of one sharp. The notation includes several slurs and accents, and ends with a first ending bracket marked with a 'W'.

Handwritten musical notation for the fourth staff. It features a treble clef and a key signature of one sharp. The melody is characterized by a series of sixteenth-note runs and slurs, ending with a first ending bracket marked with a 'W'.

Handwritten musical notation for the fifth and final staff. It continues the melody with a treble clef and a key signature of one sharp. The notation includes slurs and accents, and concludes with a double bar line and repeat dots.

*Fluto Secondo*

2.



*Air Adagio 22*



*Air Allegro 23*



*Fluto Secondo*

Handwritten musical notation for Fluto Secondo, first staff. The staff begins with a treble clef and a key signature of one sharp (F#). The music consists of a series of eighth and sixteenth notes, mostly ascending in pitch. There is a double bar line with repeat dots in the middle of the staff. The piece concludes with a trill-like flourish and a fermata, with the number '3' written above it.

Handwritten musical notation for Fluto Secondo, second staff. It starts with a treble clef and a key signature of one sharp. The notation includes a few notes followed by a double bar line with repeat dots, and then a series of vertical lines representing a tremolo or a similar effect.

Handwritten musical notation for Fluto Secondo, third staff. It begins with a treble clef and a key signature of one sharp. The music features a mix of eighth and sixteenth notes, with some notes marked with an asterisk. A double bar line with repeat dots is present. The staff ends with a trill-like flourish and a fermata, with the number '4' written above it.

*Boree 24*

Handwritten musical notation for Fluto Secondo, fourth staff. It starts with a treble clef and a key signature of one sharp. The notation consists of eighth and sixteenth notes, with some notes marked with an asterisk. A double bar line with repeat dots is located towards the end of the staff.

Three empty musical staves at the bottom of the page, consisting of three sets of five-line staves.

*Fluto Secondo*

*4 Adagio*

Handwritten musical notation for the first staff of 'Round 0 25'. The staff is in treble clef with a key signature of one sharp (F#) and a 3/4 time signature. The music consists of a series of eighth and quarter notes, some with slurs and accents. A repeat sign is present at the end of the staff.

*Round 0 25*

Handwritten musical notation for the second staff of 'Round 0 25'. The staff is in treble clef with a key signature of one sharp (F#) and a 3/4 time signature. The music continues with eighth and quarter notes, including slurs and accents.

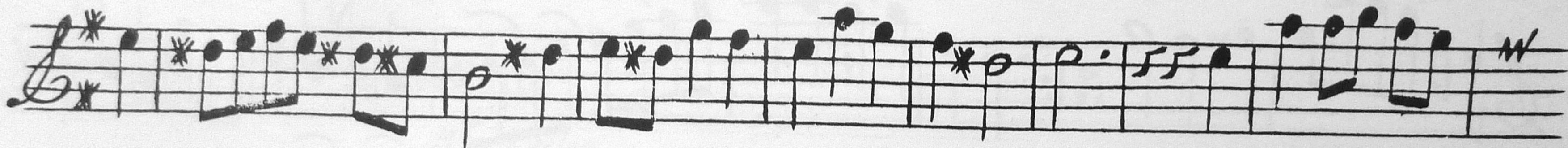
Handwritten musical notation for the third staff of 'Round 0 25'. The staff is in treble clef with a key signature of one sharp (F#) and a 3/4 time signature. The music continues with eighth and quarter notes, including slurs and accents.

Handwritten musical notation for the fourth staff of 'Round 0 25'. The staff is in treble clef with a key signature of one sharp (F#) and a 3/4 time signature. The music continues with eighth and quarter notes, including slurs and accents. A repeat sign is at the end of the staff.

Handwritten musical notation for the first staff of 'Air Allegro 26'. The staff is in treble clef with a key signature of one sharp (F#) and a 3/4 time signature. The music consists of eighth and quarter notes, some with slurs and accents. A repeat sign is at the end of the staff.

*Air Allegro 26*

*Fluto Secondo*



*Minuet 27*



6

*Fluto Secondo*

Handwritten musical notation on a five-line staff. It begins with a treble clef, a key signature of one flat (B-flat), and a common time signature (C). The melody consists of eighth and sixteenth notes, with several slurs and asterisks marking specific notes.

*Air 28*

Handwritten musical notation on a five-line staff. It begins with a treble clef, a key signature of one flat, and a common time signature. The melody features slurs and asterisks, and ends with a repeat sign.

Handwritten musical notation on a five-line staff. It begins with a treble clef, a key signature of one flat, and a common time signature. The melody is characterized by slurs and asterisks, ending with a repeat sign.

*M<sup>r</sup>. Keen*

Handwritten musical notation on a five-line staff. It begins with a treble clef, a key signature of one flat, and a common time signature. The melody consists of eighth and sixteenth notes, with slurs and asterisks. The text *Air Allegro 29* is written below the staff.

*Air Allegro 29*

Handwritten musical notation on a five-line staff. It begins with a treble clef, a key signature of one flat, and a common time signature. The melody features slurs and asterisks, and ends with a repeat sign.

*Fluto Secondo*

A musical staff in G major (one sharp) and 3/4 time. It contains a sequence of notes: G4, A4, B4, C5, B4, A4, G4, F4, E4, D4, C4, B3, A3, G3, F3, E3, D3, C3. A fermata is placed over the final note, C3, with the number 7 written above it.

A musical staff in G major and 3/4 time. It contains notes: G4, A4, B4, C5, B4, A4, G4, F4, E4, D4, C4, B3, A3, G3, F3, E3, D3, C3. The piece ends with a repeat sign and a double bar line.

*M.<sup>r</sup> Keller*

A musical staff in G major and 3/4 time. It contains notes: G4, A4, B4, C5, B4, A4, G4, F4, E4, D4, C4, B3, A3, G3, F3, E3, D3, C3. The piece ends with a repeat sign and a double bar line.

*Air Largo 30*

A musical staff in G major and 3/4 time. It contains notes: G4, A4, B4, C5, B4, A4, G4, F4, E4, D4, C4, B3, A3, G3, F3, E3, D3, C3. The piece ends with a repeat sign and a double bar line.

*M.<sup>r</sup> Barret*

Three empty musical staves.



Basso

8

6

Allamanda 31

6 6

6 6 43

6 7

3 4

Round 032

Basso

*Air Largo* 33

Basso

10

Handwritten musical notation for the first staff of 'Air Allegro 34'. The staff begins with a treble clef, a key signature of one flat (B-flat), and a common time signature (C). The music consists of a series of eighth and sixteenth notes, with some rests. A dynamic marking of *p* (piano) is present above the staff. The staff ends with a double bar line and a repeat sign.

*Air Allegro 34*

Handwritten musical notation for the second staff of 'Air Allegro 34'. The staff continues the melody from the first staff, featuring a variety of note values and rests. It concludes with a double bar line and a repeat sign.

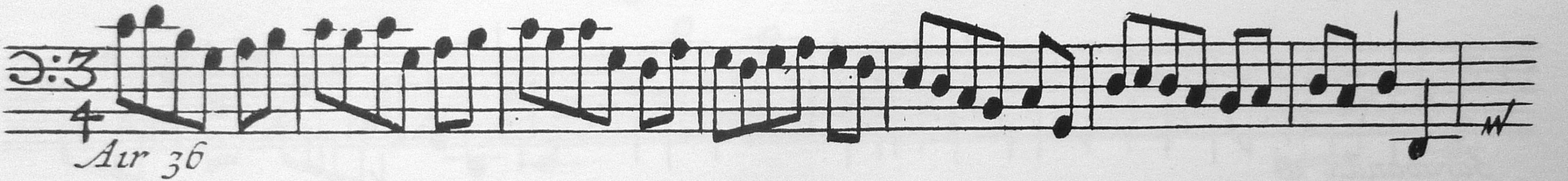
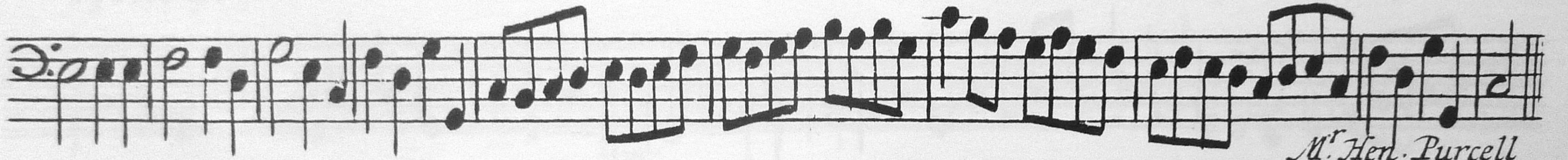
Handwritten musical notation for the third staff of 'Air Allegro 34'. This staff contains the final few notes of the piece, ending with a double bar line and a repeat sign.

Handwritten musical notation for the first staff of 'Sybell 35'. The staff starts with a treble clef, a key signature of one flat (B-flat), and a common time signature (C). The melody is composed of eighth and sixteenth notes. The staff ends with a double bar line and a repeat sign.

*Sybell 35*

Handwritten musical notation for the second staff of 'Sybell 35'. The staff continues the melody from the first staff, ending with a double bar line and a repeat sign.

Basso



A musical staff in bass clef with a common time signature (C). The piece is titled 'Air 37'. The notation consists of a series of eighth and sixteenth notes, with some slurs and accents. It ends with a double bar line and repeat dots.

Air 37

A musical staff in bass clef with a common time signature (C). The piece is titled 'Sarabanda 38'. The notation features a mix of eighth and sixteenth notes, with some slurs and accents. It ends with a double bar line and repeat dots.

A musical staff in bass clef with a 3/4 time signature. The piece is titled 'Gavott 39'. The notation includes eighth and sixteenth notes, with some slurs and accents. It ends with a double bar line and repeat dots.

Sarabanda 38

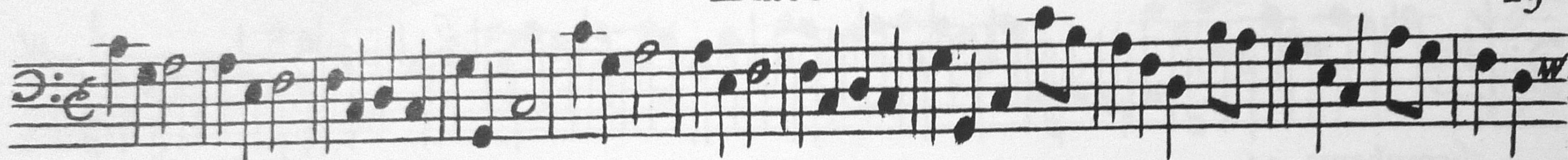
Gavott 39

A musical staff in bass clef with a common time signature (C). The piece is titled 'Air 43'. The notation consists of eighth and sixteenth notes, with some slurs and accents. It ends with a double bar line and repeat dots.

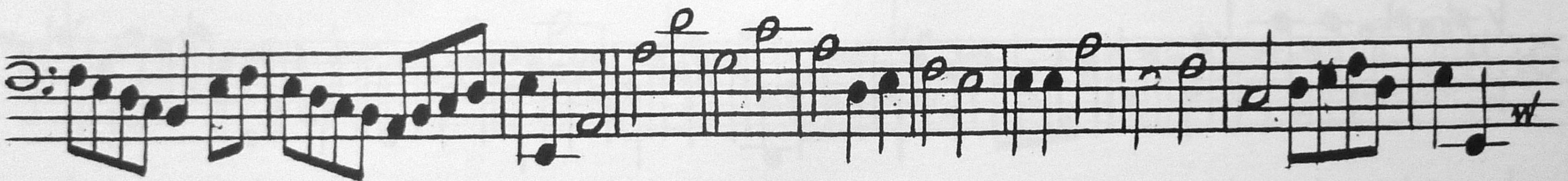
43

43

Basso



Sybell 40



Basso

14

Symphony 41

M<sup>r</sup> D. Purcell.

Basso

Handwritten musical notation for the first staff of Air 42. The staff is in bass clef with a key signature of one flat (B-flat) and a common time signature (C). The music consists of a series of eighth and sixteenth notes, with some rests. A fermata is placed over the final note, which is a half note. The number '15' is written above the staff at the end.

Air 42

Handwritten musical notation for the second staff of Air 42. The staff is in bass clef with a key signature of one flat and a common time signature. The music continues with eighth and sixteenth notes, ending with a fermata over a half note.

Handwritten musical notation for the third staff of Air 42. The staff is in bass clef with a key signature of one flat and a common time signature. The music continues with eighth and sixteenth notes, ending with a fermata over a half note.

Handwritten musical notation for the fourth staff of Air 42. The staff is in bass clef with a key signature of one flat and a common time signature. The music continues with eighth and sixteenth notes, ending with a fermata over a half note.

Air 43

Handwritten musical notation for the fifth staff of Air 43. The staff is in bass clef with a key signature of one flat and a common time signature. The music consists of eighth and sixteenth notes, ending with a fermata over a half note.



16

*Basso*

Air 44

Handwritten musical notation for Air 44, Bass clef, C major, 4/4 time signature. The piece begins with a treble clef and a key signature of one sharp (F#), which is then changed to C major. The melody consists of eighth and quarter notes, ending with a repeat sign and a trill flourish.

A Ground 45

Handwritten musical notation for A Ground 45, Bass clef, C major, 4/4 time signature. The piece features a mix of eighth and quarter notes with some rests, ending with a repeat sign and a trill flourish.

Da Capo Air Allegro 46

Handwritten musical notation for Air Allegro 46, Bass clef, C major, 4/4 time signature. The piece is marked 'Da Capo' and 'Air Allegro'. It features a more active melody with eighth and quarter notes, ending with a repeat sign and a trill flourish.

Air Allegro 47

Handwritten musical notation for Air Allegro 47, Bass clef, C major, 4/4 time signature. The piece is marked 'Air Allegro' and features a rhythmic melody with eighth and quarter notes, ending with a repeat sign and a trill flourish.

Air Allegro 47

Handwritten musical notation for Air Allegro 47, Bass clef, C major, 4/4 time signature. This is a second instance of the notation for Air Allegro 47, showing a rhythmic melody with eighth and quarter notes, ending with a repeat sign and a trill flourish.

A musical staff in bass clef with a common time signature (C). The piece is titled "Air Allegro 48". It features a series of eighth and sixteenth notes, with some notes marked with an asterisk (\*). The staff concludes with a double bar line and repeat dots.

A continuation of the musical staff for "Air Allegro 48", showing further rhythmic patterns and ending with a double bar line.

A musical staff in bass clef with a common time signature (C). The piece is titled "Air Presto 49". It features a series of eighth and sixteenth notes, with some notes marked with an asterisk (\*). The staff concludes with a double bar line and repeat dots.

A continuation of the musical staff for "Air Presto 49", showing further rhythmic patterns and ending with a double bar line.



A musical staff in bass clef with a common time signature (C). The piece is titled "A Ground 50". It features a series of eighth and sixteenth notes, ending with a double bar line and repeat dots.

Da Capo