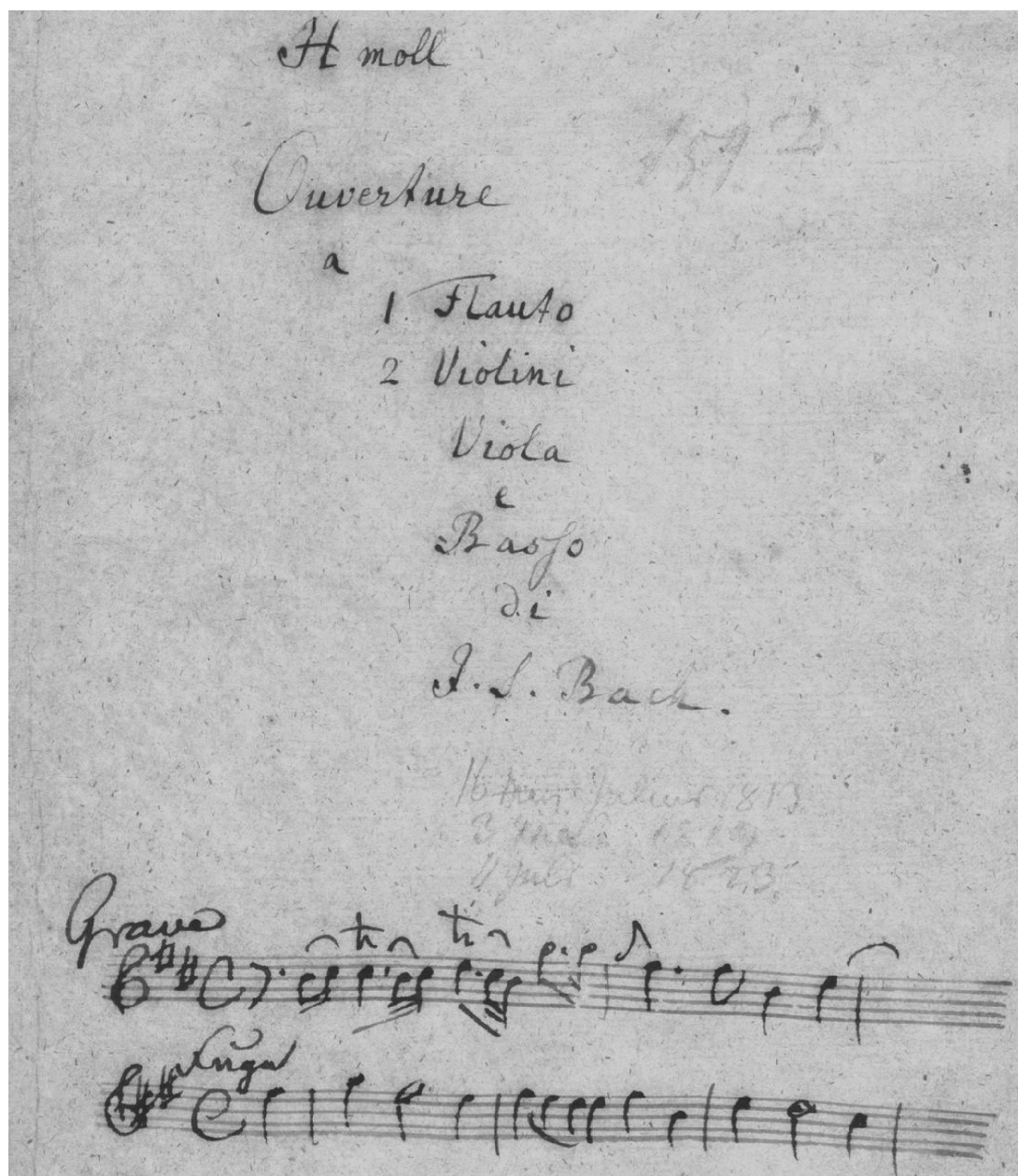


J.S. Bach

Ouverture BWV 1067



D-B Mus.Ms. 154, 1-6
edited by Brian Berryman

Ouverture BWV 1067

(D-B Mus. ms. Bach St. 154)

J.S. Bach
1685-1750

Ouverture

6

9

12

16

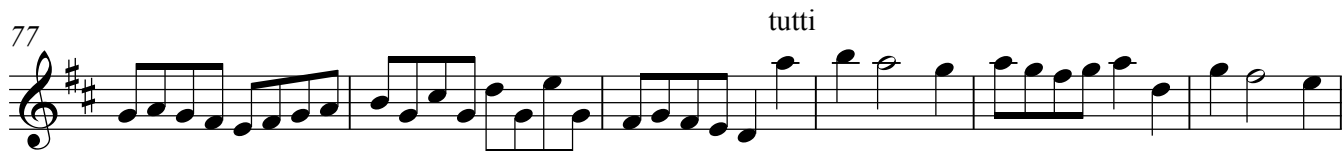
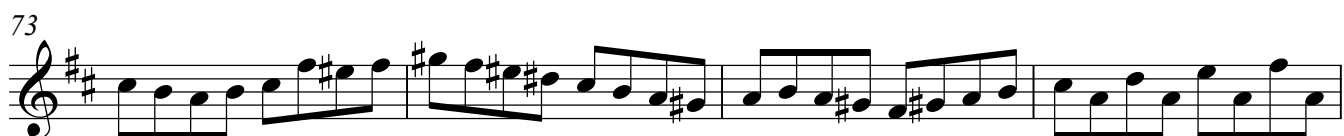
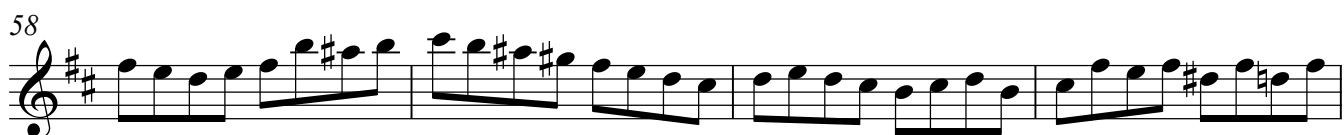
19

22

27

33

38



83 *tr*

89

93 Solo

98

103 *(forte)*

108

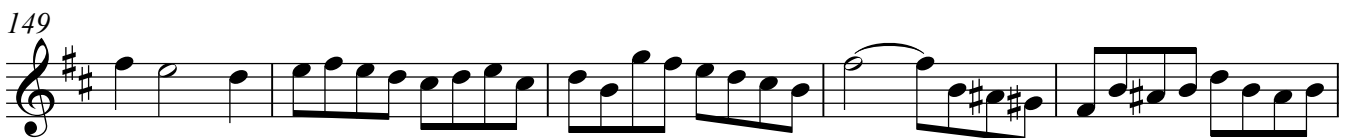
113

119 Solo

123

127 5

tutti



173

179

183

188

194

198

Lentement

203

209

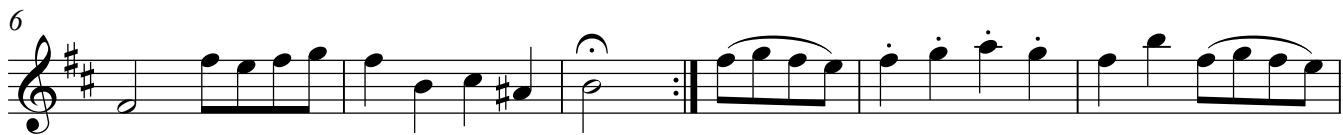
213

Rondeaux



First staff of music, starting with a treble clef, a key signature of two sharps (F# and C#), and a common time signature (C). It begins with a dynamic marking of *ff* (fortissimo) and contains several measures of music with various note values and rests.

6



Second staff of music, starting at measure 6. It includes a repeat sign (double bar line with two dots) and continues with musical notation.

12



Third staff of music, starting at measure 12. It continues the melodic line with various rhythmic patterns.

18



Fourth staff of music, starting at measure 18. It features a mix of eighth and sixteenth notes.

24



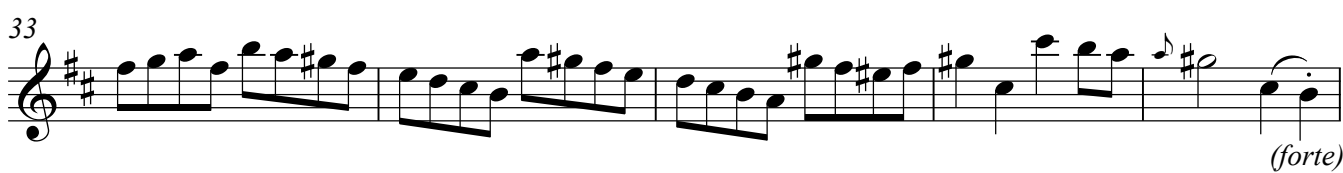
Fifth staff of music, starting at measure 24. It continues the rhythmic and melodic development.

29



Sixth staff of music, starting at measure 29. It maintains the piece's tempo and key signature.

33



Seventh staff of music, starting at measure 33. It concludes with a dynamic marking of *(forte)*.

38



Eighth staff of music, starting at measure 38. It continues the melodic line.

42



Ninth staff of music, starting at measure 42. It ends with a dynamic marking of *ff* and a double bar line.

Sarabande

Musical score for Sarabande, measures 1-27. The piece is in 3/4 time with a key signature of two sharps (F# and C#). The notation includes various rhythmic values, slurs, and trills (tr). Measure numbers 8, 13, 20, and 27 are indicated at the start of their respective staves.

Bourée alternativement

Musical score for Bourée alternativement, measures 1-18. The piece is in 6/8 time with a key signature of two sharps. The notation includes slurs and trills (tr). Measure numbers 6, 13, and 18 are indicated at the start of their respective staves.

Bourée 2

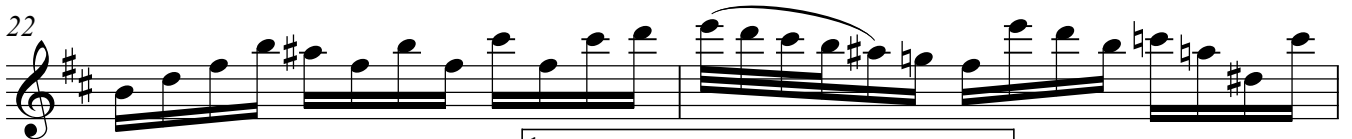
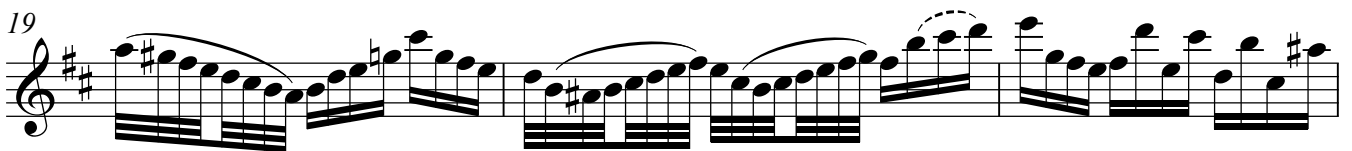
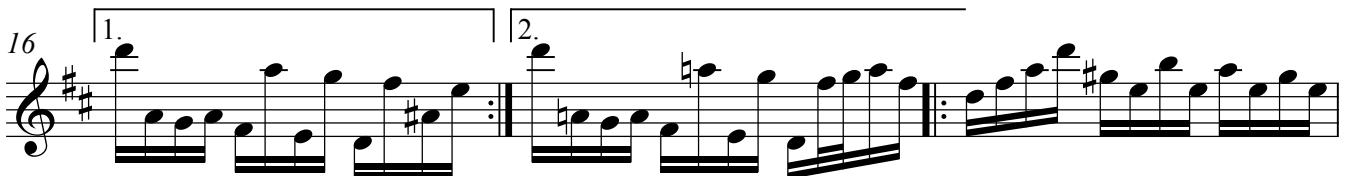
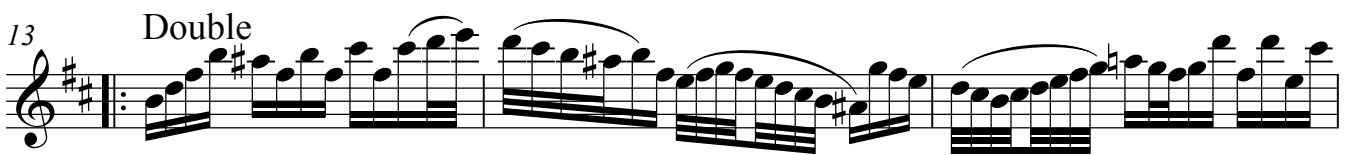
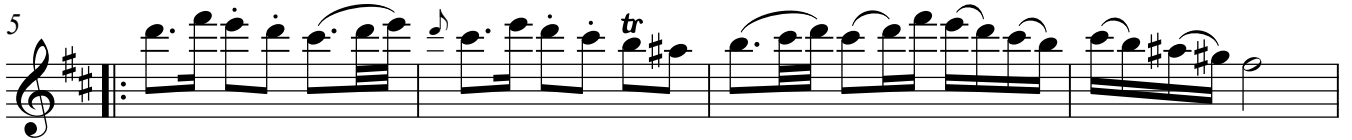
Musical score for Bourée 2, measures 19-28. The piece is in 6/8 time with a key signature of two sharps. The notation includes slurs and trills (tr). Measure numbers 23 and 29 are indicated at the start of their respective staves.

Da Capo

Musical score for Da Capo, measures 29-35. The piece is in 6/8 time with a key signature of two sharps. The notation includes slurs and trills (tr). Measure number 35 is indicated at the start of the staff.

Polonoise moderato e staccato

Lentement



1.
(from St. 639, ca. 1755)



Menuet

Musical staff for Menuet, measures 1-7. The key signature is two sharps (F# and C#) and the time signature is 3/4. The melody features eighth and sixteenth notes with various articulations, including a trill (tr) in measure 5.

Musical staff for Menuet, measures 8-15. Measure 8 begins with a repeat sign. The melody continues with eighth and sixteenth notes, ending with a trill (tr) in measure 15.

Musical staff for Menuet, measures 16-20. The melody consists of eighth and sixteenth notes with slurs and accents.

Musical staff for Menuet, measures 21-28. The melody continues with eighth and sixteenth notes, ending with a repeat sign in measure 28.

Battinerie

Musical staff for Battinerie, measures 1-7. The key signature is two sharps (F# and C#) and the time signature is 2/4. The piece features a rhythmic pattern of eighth and sixteenth notes.

Musical staff for Battinerie, measures 8-13. The piece features a rhythmic pattern of eighth and sixteenth notes with trills (tr) in measures 9 and 10.

Musical staff for Battinerie, measures 14-21. The piece features a rhythmic pattern of eighth and sixteenth notes with trills (tr) in measures 14 and 15. Dynamic markings (pian.) and (forte) are present at the end of the staff.

Musical staff for Battinerie, measures 22-28. The piece features a rhythmic pattern of eighth and sixteenth notes with trills (tr) in measures 27 and 28.

Musical staff for Battinerie, measures 29-35. The piece features a rhythmic pattern of eighth and sixteenth notes with trills (tr) in measures 30 and 32.

Musical staff for Battinerie, measures 36-42. The piece features a rhythmic pattern of eighth and sixteenth notes, ending with a repeat sign in measure 42.