

# Duos from Cantata 7.2

LET VOICE SOLO PARTS ALWAYS PREDOMINATE  
(opt. small non-cue notes for additional lines)

J. S. Bach [arr. P. Lang] BWV 7.2  
Aria for Bass and Bc "Merkt und hoert..."

arr. for Violin or Viola or Cello and Cello, Violin or Viola and Viola

$\text{♩} = 76$  opt. line

1 Violin for Bass Solo up 8va  
Duo with Viola or Cello  
bvw 7.2

1 Viola for Bass Solo up 8va  
Duo with Viola bvw 7.2

1 Viola for Bass Solo  
Duo with Cello bvw 7.2

1 Violoncello for Bass Solo  
Duo with Cello bvw 7.2

2 Viola for Bc up 8va  
Duo with Violin bvw 7.2

2 Violoncello for Bc  
Duo with Violin, Viola, or Cello  
bvw 7.2

(opt. Fine)  
Solo

5

Vln. 1

Vla.

Vla.

Vc.

Vla.

Vc.

9

Vln. 1

Vla.

Vla.

Vc.

Vla.

Vc.

12

Vln. 1  
Vla.  
Vla.  
Vc.  
Vla.  
Vc.

This system contains measures 12, 13, and 14. It features six staves: Violin 1, two Violas, and two Cellos. The music is in a key with one sharp (F#) and a 3/4 time signature. Measures 12 and 13 show active melodic lines in the strings, while measure 14 contains rests for the upper staves and a final chord with a 'V' marking.

15

Vln. 1  
Vla.  
Vla.  
Vc.  
Vla.  
Vc.

This system contains measures 15, 16, 17, and 18. The Violin 1 part has a melodic line with some chromaticism. The lower strings play a rhythmic accompaniment. Measure 18 features a dynamic marking of *f* (forte) and a 'V' marking.

19

Vln. 1  
Vla.  
Vla.  
Vc.  
Vla.  
Vc.

This system contains measures 19, 20, 21, and 22. The music continues with active string parts. Dynamic markings of *p* (piano) are present in the lower strings at the beginning of measures 20 and 21. A 'V' marking is also present in measure 21.

22

Score for measures 22-25. The system includes Vln. 1, Vla., Vc., and a grand staff (Vla. and Vc.). The music is in 3/4 time with a key signature of one sharp (F#). Measures 22-25 show a rhythmic pattern of eighth and sixteenth notes. The grand staff parts feature complex textures with many sixteenth notes and some triplets. There are 'V' markings above some notes in measures 23, 24, and 25.

26

Score for measures 26-28. The system includes Vln. 1, Vla., Vc., and a grand staff (Vla. and Vc.). The music continues with the established rhythmic patterns. Measures 26-28 show a continuation of the eighth and sixteenth note patterns. The grand staff parts have a more active role with many sixteenth notes. There are 'V' markings above notes in measures 27 and 28. A dynamic marking of *f* (forte) appears at the end of measure 28 in both the grand staff parts.

29

Score for measures 29-31. The system includes Vln. 1, Vla., Vc., and a grand staff (Vla. and Vc.). The music continues with the established rhythmic patterns. Measures 29-31 show a continuation of the eighth and sixteenth note patterns. The grand staff parts have a more active role with many sixteenth notes. A dynamic marking of *f* (forte) appears at the beginning of measure 29 in all parts.

31 (Fine) lead

Vln. 1

Vla.

Vla.

Vc.

Vla. *poco rit.* Bass *mp* *pp*

Vc. *poco rit.* Bass *mp* *pp*

34

Vln. 1

Vla.

Vla.

Vc.

Vla.

Vc.

37

Vln. 1

Vla.

Vla.

Vc.

Vla.

Vc.

40

Vln. 1  
Vla.  
Vla.  
Vc.  
Vla.  
Vc.

*mp*

*mp*

Detailed description: This system of music covers measures 40, 41, and 42. It features six staves: Violin 1, two Violas, and two Cellos. The key signature is one sharp (F#). The music is characterized by rhythmic patterns and melodic lines in the upper staves, and dense, textured accompaniment in the lower staves. Dynamic markings of *mp* (mezzo-piano) are present at the end of measures 41 and 42.

43

Vln. 1  
Vla.  
Vla.  
Vc.  
Vla.  
Vc.

*mf*  
*mf*  
*mf*  
*mf*  
*p*  
*p*

Detailed description: This system covers measures 43, 44, and 45. The key signature remains one sharp. The music continues with similar rhythmic and melodic motifs. Dynamic markings include *mf* (mezzo-forte) for the upper staves and *p* (piano) for the lower staves, indicating a change in volume and texture.

46

Vln. 1  
Vla.  
Vla.  
Vc.  
Vla.  
Vc.

*poco rit.*  
*poco rit.*  
*poco rit.*  
*poco rit.*  
*poco rit.*  
*poco rit.*

D.C. al Fine

Detailed description: This system covers measures 46, 47, and 48. The key signature is still one sharp. The music concludes with a *poco rit.* (ritardando) instruction across all staves. The final measure of the system is marked "D.C. al Fine", indicating the end of the section.

1 Violin for Bass Solo up 8va Duo with Viola or Cello bwv 7.2

# Duos from Cantata 7.2

LET VOICE SOLO PARTS ALWAYS PREDOMINATE

(opt. small non-cue notes for additional lines) J. S. Bach [arr. P. Lang] BWV 7.2

Aria for Bass and Bc "Merkt und hoert..."

arr. for Violin or Viola or Cello and Cello, Violin or Viola and Viola

Vc.  $\text{♩} = 76$  opt. line

*f*

4 Solo (opt. Fine)

*f* *mf*

7

*f*

11

*f*

14

*f*

18

*f*

22

*f*

26

*f*

30 (Fine) lead

*mp*

33



36



39



42



46



D.C. al Fine

*poco rit.*

# 1 Viola for Bass Solo up 8va Duo with Viola bwv 7.2

## Duos from Cantata 7.2

LET VOICE SOLO PARTS ALWAYS PREDOMINATE

(opt. small non-cue notes for additional lines)

J. S. Bach [arr. P. Lang] BWV 7.2

Aria for Bass and Bc "Merkt und hoert..."

arr. for Violin or Viola or Cello and Cello, Violin or Viola and Viola

Vc.  $\text{♩} = 76$  opt. line

*f*

4 Solo (opt. Fine) *f* *mf*

7 *f*

11 *f*

14

18

22

26 *f*

30 (Fine) lead *mp*



33



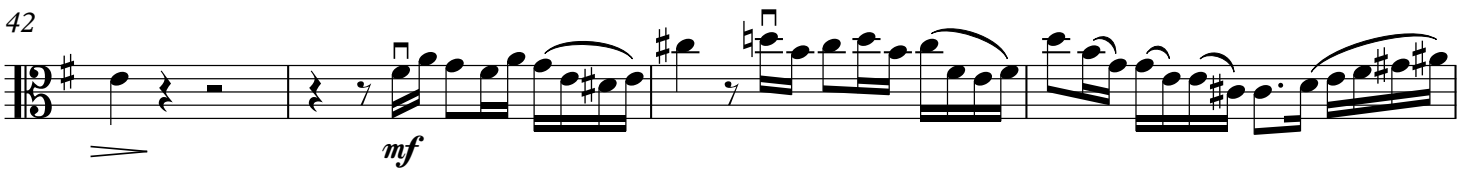
36



39



42



46



D.C. al Fine

1 Viola for Bass Solo Duo with Cello bwv 7.2

# Duos from Cantata 7.2

LET VOICE SOLO PARTS ALWAYS PREDOMINATE

(opt. small non-cue notes for additional lines)

J. S. Bach [arr. P. Lang] BWV 7.2

Aria for Bass and Bc "Merkt und hoert..."

arr. for Violin or Viola or Cello and Cello, Violin or Viola and Viola

Vc.  $\text{♩} = 76$  opt. line

4 Solo (opt. Fine) *f* *mf*

7 *f*

11 *f*

14 *f*

18 *f*

22 *f*

26 *f*

30 (Fine) lead *mp*

33



36



39



42



46



D.C. al Fine

# 1 Violoncello for Bass Solo Duo with Cello bwv 7:2

## Duos from Cantata 7.2

LET VOICE SOLO PARTS ALWAYS PREDOMINATE

(opt. small non-cue notes for additional lines)

J. S. Bach [arr. P. Lang] BWV 7.2

Aria for Bass and Bc "Merkt und hoert..."

arr. for Violin or Viola or Cello and Cello, Violin or Viola and Viola

Vc.  $\text{♩} = 76$  opt. line

*f*

Detailed description: This block contains the first three measures of the piece. It is written in bass clef with a key signature of one sharp (F#) and a common time signature (C). The tempo is marked as quarter note = 76. The first measure starts with a half rest, followed by a quarter note G2, and then a series of eighth notes. The second measure continues with eighth notes. The third measure features a sixteenth-note triplet. The dynamic marking *f* is placed below the first measure. An 'opt. line' is indicated above the first measure.

4 Solo (opt. Fine)

*f* *mf*

Detailed description: This block contains measures 4, 5, and 6. Measure 4 continues with eighth notes. Measure 5 has a half rest followed by a quarter note G2. Measure 6 features a sixteenth-note triplet. The dynamic marking *f* is below measure 5, and *mf* is below measure 6. The instruction 'Solo (opt. Fine)' is written above measure 4.

7

*f*

Detailed description: This block contains measures 7, 8, and 9. Measure 7 continues with eighth notes. Measure 8 has a half rest followed by a quarter note G2. Measure 9 features a sixteenth-note triplet. The dynamic marking *f* is below measure 8.

11

Detailed description: This block contains measures 10, 11, and 12. Measure 10 continues with eighth notes. Measure 11 has a half rest followed by a quarter note G2. Measure 12 features a sixteenth-note triplet. A 'V' (crescendo) hairpin is placed above measure 11.

14

Detailed description: This block contains measures 13, 14, and 15. Measure 13 has a half rest followed by a quarter note G2. Measure 14 continues with eighth notes. Measure 15 features a sixteenth-note triplet. A 'V' (crescendo) hairpin is placed above measure 14.

18

Detailed description: This block contains measures 16 and 17. Measure 16 has a half rest followed by a quarter note G2. Measure 17 continues with eighth notes. A 'V' (crescendo) hairpin is placed above measure 17.

22

Detailed description: This block contains measures 18, 19, 20, and 21. Measure 18 has a half rest followed by a quarter note G2. Measure 19 continues with eighth notes. Measure 20 has a half rest followed by a quarter note G2. Measure 21 features a sixteenth-note triplet. A 'V' (crescendo) hairpin is placed above measure 21.

26

*f*

Detailed description: This block contains measures 22, 23, 24, and 25. Measure 22 continues with eighth notes. Measure 23 has a half rest followed by a quarter note G2. Measure 24 continues with eighth notes. Measure 25 features a sixteenth-note triplet. A 'V' (crescendo) hairpin is placed above measure 24. The dynamic marking *f* is below measure 25.

30 (Fine) lead *mp*

Detailed description: This block contains measures 26, 27, 28, and 29. Measure 26 continues with eighth notes. Measure 27 has a half rest followed by a quarter note G2. Measure 28 continues with eighth notes. Measure 29 features a sixteenth-note triplet. The dynamic marking *mp* is below measure 29. The instruction '(Fine) lead' is written above measure 29.

33



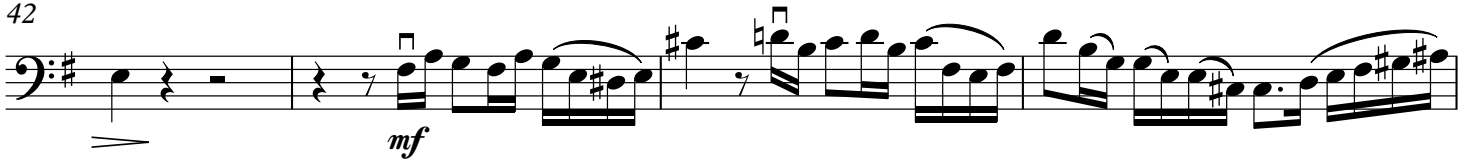
36



39



42



46



D.C. al Fine

*poco rit.*

2 Viola for Bc up 8va Duo with Violin bwv 7.2

# Duos from Cantata 7.2

LET VOICE SOLO PARTS ALWAYS PREDOMINATE

(opt. small non-cue notes for additional lines) J. S. Bach [arr. P. Lang] BWV 7.2

Aria for Bass and Bc "Merkt und hoert..."

arr. for Violin or Viola or Cello and Cello, Violin or Viola and Viola

♩ = 76

4 *f* (opt. Fine)

7 *p* *mf*

10 *p*

13

16

19 *f*

22 *p*

25

28

31 *f* (Fine) Bass

*poco rit.* *pp*

34

37

39

41

44

46

D.C. al Fine

poco rit.

2 Violoncello for Bc Duo with Violin, Viola, or Cello bwv 7.2

# Duos from Cantata 7.2

LET VOICE SOLO PARTS ALWAYS PREDOMINATE

(opt. small non-cue notes for additional lines)

J. S. Bach [arr. P. Lang] BWV 7.2

Aria for Bass and Bc "Merkt und hoert..."

arr. for Violin or Viola or Cello and Cello, Violin or Viola and Viola

♩ = 76

4 *f* (opt. Fine)

7 *p* *mf*

10 *p*

13

16

19 *f*

22 *p*

25

28 *f*

31 (Fine) Bass *poco rit.* *pp*



34

37

39

41

44

46

D.C. al Fine

*poco rit.*