

Instr. de
L. Villa-Robos
Rio 1921

Oração ao Diabo

(Orlando Teixeira)

A. Neponuceus
op. 20 N.º 2

Energico e Vivo

Bom desespero

Flautas 3/4

Oboes 3/4

Clarinete 3/4

Fagotes 3/4

Corrimão 3/4

Violão 3/4

Tromba 3/4

Tuba 3/4

Susp.

Bateria 3/4 *ritmico marcato*
mf cresc

Harpa 3/4

Canto 3/4
Energico e Vivo

Bom desespero
Gran de Deus Sala

Violino I 3/4

Violino II 3/4

Viola 3/4

Violoncello 3/4

Basso 3/4



Fl.

Ob.

Musical notation for Flute and Oboe staves. The Flute staff is empty. The Oboe staff contains a single note with a dynamic marking of *f*.

Clarinete
ni p
Fagott

Musical notation for Clarinet and Bassoon staves. Both staves contain a single note with a dynamic marking of *f*.

Corn fã

Musical notation for Cornet staff, which is empty.

Pist sib

Musical notation for Piccolo staff, which is empty.

Tromb.

Musical notation for Trombone staff. It contains a single note with a dynamic marking of *mf*.

Tuba

Musical notation for Tuba staff. It contains a single note with a dynamic marking of *mf*.

Musical notation for string staves. The notation includes various dynamics such as *mf* and *ff*, and includes some handwritten annotations like *ff* and *ff.* with slanted lines.

Konpa

Musical notation for Knpa staff, which is empty.

Caute

Vocal line with lyrics: *- naz, verme lho deus maldi-to, Rei do inferno, senhor abso-lu to da*

5th

Musical notation for five string staves. Each staff contains a single note with a dynamic marking of *f*.

Empty musical staves at the bottom of the page.

Flauta $\text{F}\sharp$
Ob. $\text{F}\sharp$
Clarinete $\text{F}\sharp$
m. sib
Fagote $\text{F}\flat$ $\text{F}\flat$
Corneta $\text{F}\sharp$ $\text{F}\sharp$
Pist. sib
Tromb. $\text{F}\sharp$
Tuba $\text{F}\flat$

Harpag. $\text{F}\flat$
 $\text{F}\flat$

Cant. $\text{F}\sharp$
trava; *Es - pi - rito que ormai domi - na e que - dis - se - va, Aras -*

5 $\text{F}\flat$

Divisão de Música
Fundação
Biblioteca Nacional
RJ.
Atalho 50377
455 181

Flaut

Ob.

C. Bass

Clarinet in B

Fagot

Corn fa

Pist. sib

Tromb.

Tuba

Bati.

Harpa

Cant

— ta do a pos si, pe loe — ter — no in fi — nito;

Gran de deus Sa — ta

5th

Menos e com muito sentimento

Fl. C
Cl. C

Clarinete si b
Fagote C
Corno fa

Solo
pp *muito espressivo* *cresc.* *dim.*

Harpa

Cant. C

raz, minh'adus de preçito, Bran ca de mys - ti - cus - mo, a tua

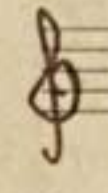
Menos e com muito sentimento

5^{ta}

pp *muito espressivo*



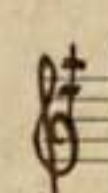
Fl.



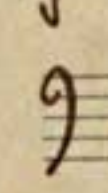
Ob.



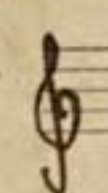
Clarin. in si b



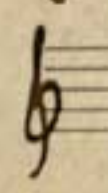
Fagott



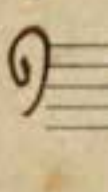
Corn. fa



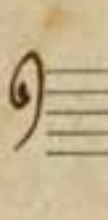
Pist. sib



Tromb.

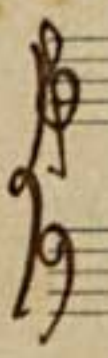


Tuba



d. Augly (ad libitum)

Harpa



Canto



alma se ele - va, e restauração cheia de fé, co'ra ba autiga creu, azul do boi A - pis no Egyp - to.

5th



ppp

Fl.

Ob.

b. Tuba

Clarus

Fagott

Contraf.

Solo

mf

rit

a tempo

pp

ppp

ppp

rit 2^o

a tempo

Harpa

Lento

rit

a tempo

cant.

di - zem que se a alua tem de qualquer desgraça - do Em troca tu lhe dás das fortu - ras o a - cres

5th

rit

a tempo

rit

a tempo

rit

a tempo

rit

a tempo

Fl.

Ob.

B. Fagot

Clarinete

Fagott

Corneio

Pistão

Tromba

Tuba

Harpa

Canto

coite, E de outro não sei en que teu eleito vençam; Se tanto for mister para que ença a ma - do

5th

pp

mf

Fl. $\text{\$}$
 Ob. $\text{\$}$
 C. Fag. $\text{\$}$
 Clarino $\text{\$}$ *vol*
 Fagotto $\text{\$}$
 Corni fa $\text{\$}$
 Rest. sib $\text{\$}$
 Tromb. $\text{\$}$
 Tuba $\text{\$}$
 Bati. $\text{\$}$

2^o

G. C. Solo $\text{\$}$
 f

Piatti col marte $\text{\$}$
 fff >

Harpa $\text{\$}$

Cant. $\text{\$}$
 Pela dos risos, bous, a dos o — lhos de nos

Fl. - $\overset{\circ}{f}$ -

Ob. - $\overset{\circ}{f}$ $\overset{\circ}{f}$ -

Clarinet in Bb - $\overset{\circ}{f}$ $\overset{\circ}{f}$ -

Clarinet in A - $\overset{\circ}{f}$ $\overset{\circ}{f}$ -

Fagott - $\overset{\circ}{f}$ $\overset{\circ}{f}$ -

Corn F# - - - -

Pist. sib - - - -

Trubl. - - - -

Tuba - - - -

Batteria - *Tantou* $\overset{\circ}{mf}$ -

Harpa - *gliss.* $\overset{\circ}{ff}$ -

Violon $\overset{\circ}{f}$ $\overset{\circ}{f}$ $\overset{\circ}{p}$ $\overset{\circ}{f}$ $\overset{\circ}{f}$ $\overset{\circ}{p}$

Violoncello $\overset{\circ}{f}$ $\overset{\circ}{f}$ $\overset{\circ}{f}$ $\overset{\circ}{f}$ $\overset{\circ}{f}$ $\overset{\circ}{f}$

5th $\overset{\circ}{f}$ $\overset{\circ}{f}$ $\overset{\circ}{f}$ $\overset{\circ}{f}$ $\overset{\circ}{f}$ $\overset{\circ}{f}$

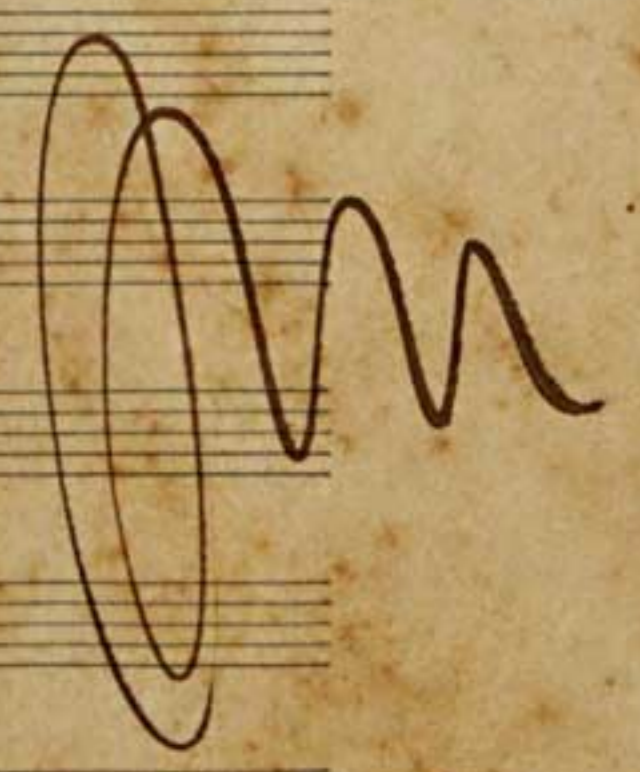
te, *Grand de deux Sats - mag,* *lanch-me tua* *ben*
lanch-me tua *ben* *ben*

estrepitoso

Fl.
Ob.
Fag.
Clarinet
Fagotto
Tutti
Pistoni
Tamb.
Tutti
Timp.
Batt.
Tutti

Handwritten musical score for the first system, featuring multiple staves with notes, rests, and dynamic markings such as *f*, *cresc.*, and *ff*. The notation includes various rhythmic values and articulation marks.

Fin



estrepitoso

Cant.
5^{ta}

Handwritten musical score for the second system, including vocal lines and piano accompaniment. It features complex rhythmic patterns, triplets, and dynamic markings like *f* and *cresc.*.

*Rev. 4/8/92
W. W. [Signature]*