

Aufführungsrecht
vorbehalten.

Contrabass.

Gewidmet Herrn Capellmeister
CARL KUKLA.

Concertstück

von

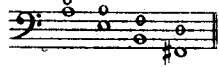
Stimmung der Saiten:

FRANZ SIMANDL.

Op. 34.

Andante con moto.

TUTTI.



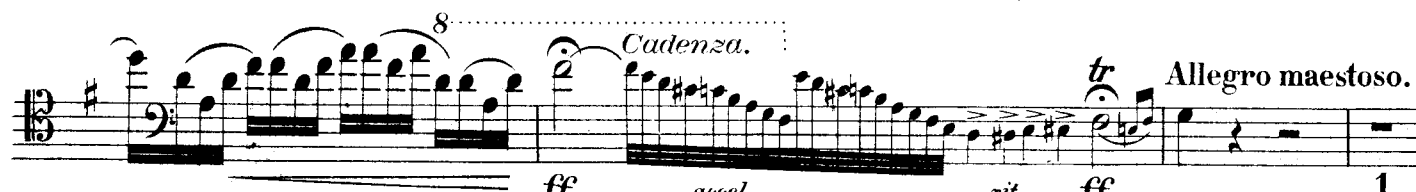
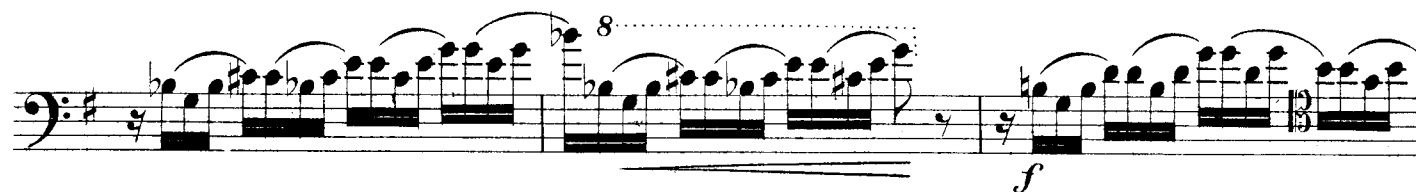
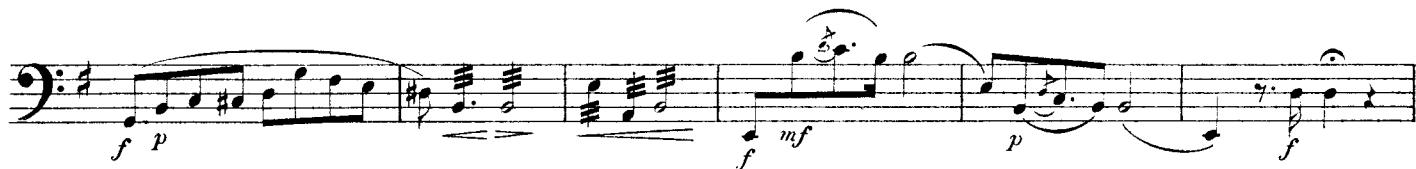
A Monsieur CHARLES KUKLA
maitre de chapelle.

Morceau de Concert.

par

FRANÇOIS SIMANDL.

Op. 34.



Contrabass.

f

con espressione.
(mit Ausdruck)

con vivezza.
(mit Lebhaftigkeit)

ff

p

f

fp leggero e colla punta dell'arco.
(leicht und bei der Spitze des Bogens.)

fp leggero.

f pesante.

p

ff string. sempre dim. e rit. molto.

SOLO Tempo I.

Contrabass.

con molto passione.

pp *mf* *cresc. f* *mf* *f*

p *pp* *mf* *f*

ff *rit.*

Detailed description: This section of the score is for the Contrabass. It begins with the instruction 'SOLO Tempo I.' and 'con molto passione.' The music is written in a single staff with a bass clef and a key signature of two sharps (F# and C#). The tempo is marked 'Tempo I.' The dynamics range from *pp* (pianissimo) to *ff* (fortissimo). The piece features a variety of rhythmic patterns, including eighth and sixteenth notes, and rests. There are several slurs and accents throughout. The section concludes with a *rit.* (ritardando) marking.

Scherzando.

p *mf* *f*

Detailed description: This section is titled 'Scherzando.' and is written in a single staff with a bass clef and a key signature of two sharps. The tempo is marked 'Scherzando.' The dynamics range from *p* (piano) to *f* (forte). The music consists of a series of eighth-note patterns, some with slurs and accents. There are several slurs and accents throughout. The section concludes with a *f* (forte) marking.

Feroce.

mf *f* *ff*

Detailed description: This section is titled 'Feroce.' and is written in a single staff with a bass clef and a key signature of two sharps. The tempo is marked 'Feroce.' The dynamics range from *mf* (mezzo-forte) to *ff* (fortissimo). The music consists of a series of eighth-note patterns, some with slurs and accents. There are several slurs and accents throughout. The section concludes with a *ff* (fortissimo) marking.

Contrabass.

TUTTI poco meno. tempo.

SOLO Recit.

Tempo.

accel - - poco a poco

ritar - - dan - - do

A tempo.

con espressione.

Contrabass.

con *vivezza*.

8

Feroce.

sempre cresc.

tr *tr* **Cantando.**
ff *molto espressivo.*

mf *cre - - -*

scen - - - do - - - in - - - f - - - cres - - -

Fuocoso.
in - - - ff

8

fff