

Saxophone baryton

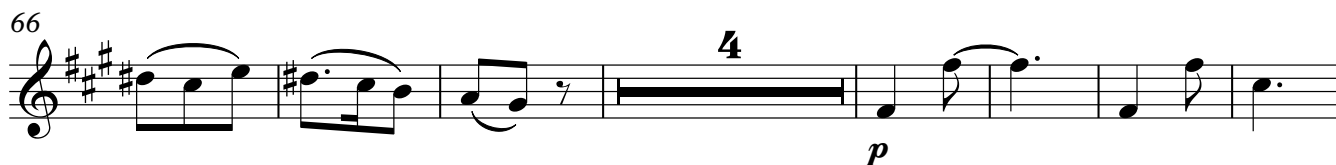
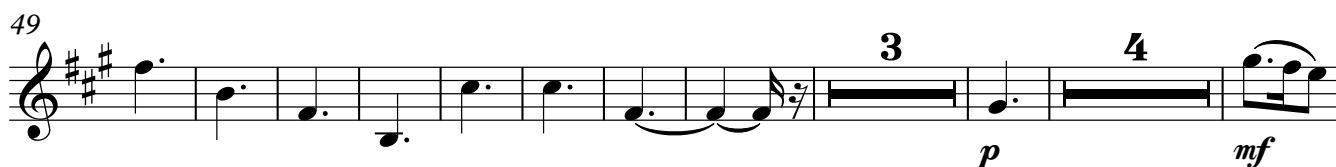
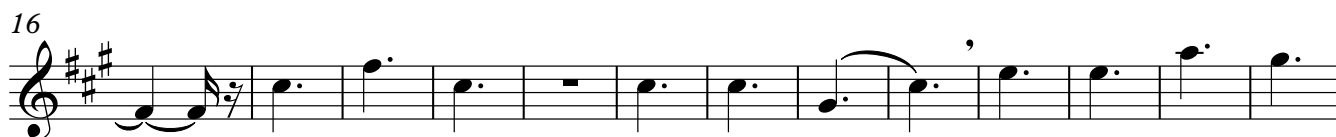
Bourrée

No. 1 de la suite *Saint-Côme-d'Olt*

Arrangement : Louis Sauter

Guy Miaille

Energique ♩ = 80 - 86



Saxophone baryton

89 **A tempo**

mp

104

112

121

130

139

Automne

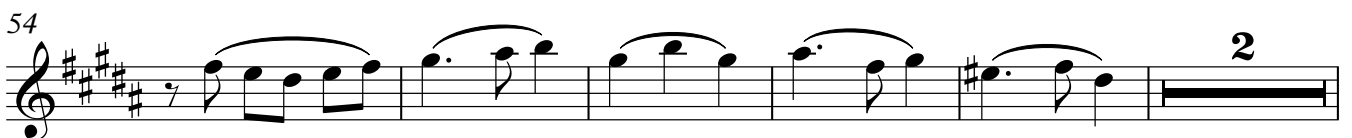
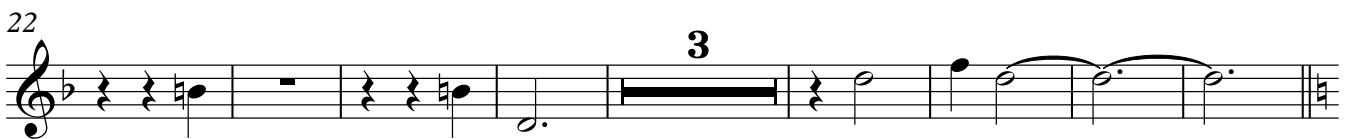
Valse

No. 1 de la suite *En pays Saint-Serninnois*

Arrangement : Louis Sauter

Guy Miaille

1 **Valse lente**



Saxophone baryton

61

First staff of music, measures 61-70. Key signature: three sharps (F#, C#, G#). The staff contains a series of notes, including rests, and a triplet of eighth notes in measure 70.

70

Second staff of music, measures 70-80. Key signature: three sharps. Features a triplet of eighth notes in measure 70 and a quartet of eighth notes in measure 71.

80

rall. . . A tempo

Third staff of music, measures 80-90. Key signature: three sharps. Measure 80 starts with a *p* dynamic marking and a slur over the first two notes. A double bar line occurs after measure 80. The tempo changes from *rall.* to *A tempo* after the double bar line.

90

Fourth staff of music, measures 90-102. Key signature: two flats (Bb, Eb). Features two triplet markings over eighth notes in measures 90 and 94.

102

Fifth staff of music, measures 102-110. Key signature: two flats. Features a triplet marking over eighth notes in measure 105.

110

Sixth staff of music, measures 110-118. Key signature: two flats. Features a slur over a sequence of eighth notes in measure 110 and a final double bar line at the end of the staff.

Polka piquée

No. 4 de la suite *Le Millavois*

Arrangement : Louis Sauter

Guy Miaille

1 $\text{♩} = 120$

mf 3

8

5

18

23

28

33

37

