

SONATA in F MINOR

for Violin and Harpsichord

Score (07':10")

Filippo Benna (fl.ca.1717 - fl.1794)

Arr. Michel Rondeau

1. Adagio assai $\text{♩} = 60$

The image displays a musical score for the first movement of a sonata in F minor. The score is arranged in three systems, each with a Violin (Vln.) part on the top staff and a Harpsichord (Hpschd.) part on the bottom two staves. The key signature is two flats (B-flat and E-flat), and the time signature is common time (C). The tempo is marked '1. Adagio assai' with a metronome marking of a quarter note equal to 60 beats per minute. The first system shows the beginning of the piece, with the violin playing a melodic line and the harpsichord providing harmonic support. The second system features a triplet of eighth notes in both parts, with the violin part marked with a '3' above the notes. The third system continues the melodic development in the violin, including a trill (tr) on a note, while the harpsichord accompaniment remains consistent. The score is written in a clear, professional font with standard musical notation.

SONATA in F MINOR - Benna - Score

Vln. *tr*

Hpschd.

Measures 7-8. Violin part features a trill (tr) on the eighth note of measure 7. Harpsichord accompaniment consists of chords and moving lines in both hands.

Vln.

Hpschd.

Measures 9-10. Violin part has a melodic line with slurs. Harpsichord accompaniment continues with chords and moving lines.

Vln. *ff*

Hpschd.

Measures 11-12. Violin part is marked fortissimo (ff) and features a melodic line with slurs. Harpsichord accompaniment consists of chords and moving lines.

SONATA in F MINOR - Benna - Score

12

Vln.

Hpschd.

Detailed description: This system covers measures 12 and 13. The Violin part (Vln.) begins at measure 12 with a melodic line featuring eighth and sixteenth notes, including a triplet of sixteenth notes. The Harpsichord part (Hpschd.) consists of two staves. The right hand plays chords and single notes, while the left hand provides a bass line with eighth and sixteenth notes.

13

Vln.

Hpschd.

Detailed description: This system covers measures 13 and 14. The Violin part continues with a melodic line, featuring a triplet of sixteenth notes in measure 13. The Harpsichord part continues with its accompaniment, showing chords in the right hand and a bass line in the left hand.

14

Vln.

Hpschd.

Detailed description: This system covers measures 14 and 15. The Violin part features a melodic line with a triplet of sixteenth notes in measure 14 and a dynamic marking of *tr* (trillo) in measure 15. The Harpsichord part continues with its accompaniment, showing chords in the right hand and a bass line in the left hand.

SONATA in F MINOR - Benna - Score

Vln.

Hpschd.

Vln.

Hpschd.

Vln.

Hpschd.

2. Andante

SONATA in F MINOR - Benna - Score

23

Vln.

Hpschd.

This system contains measures 23 through 26. The Violin part (Vln.) begins with a half rest, followed by a half note G4, a dotted half note G4, and a quarter note G4. The Piano part (Hpschd.) features a rhythmic accompaniment with chords and moving lines in both hands.

27

Vln.

Hpschd.

This system contains measures 27 through 30. The Violin part (Vln.) continues with a melodic line of eighth and quarter notes. The Piano part (Hpschd.) maintains its accompaniment with chords and moving lines.

31

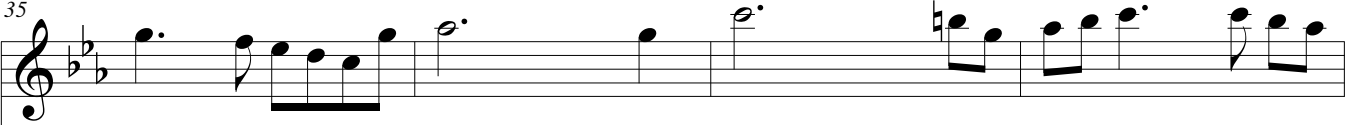
Vln.

Hpschd.

This system contains measures 31 through 34. The Violin part (Vln.) continues with a melodic line. The Piano part (Hpschd.) maintains its accompaniment with chords and moving lines.

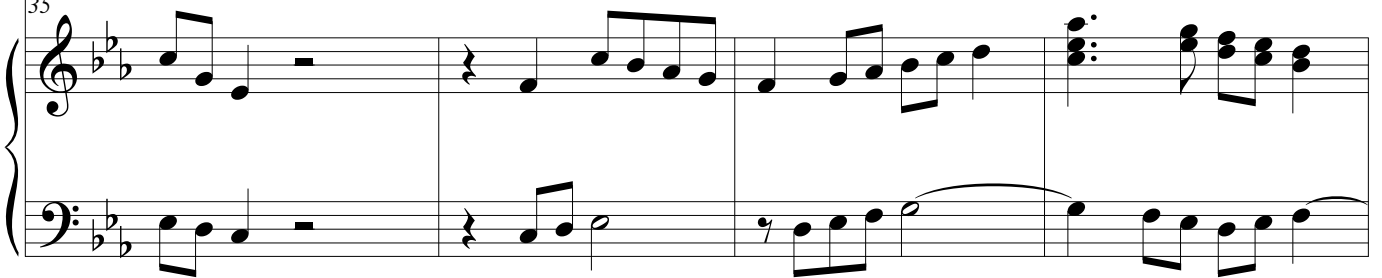
SONATA in F MINOR - Benna - Score

Vln. 35



Violin staff 1, measures 35-38. The music begins with a dotted quarter note on G4, followed by an eighth note on A4, and a quarter note on Bb4. The next measure contains a quarter note on C5, a dotted quarter note on Bb4, and a quarter note on A4. The final measure consists of a quarter note on G4, a dotted quarter note on F4, and a quarter note on E4.

Hpschd. 35



Piano staff 1, measures 35-38. The right hand starts with a quarter note on G4, followed by a quarter note on A4, and a quarter note on Bb4. The left hand begins with a quarter note on G3, followed by a quarter note on F3, and a quarter note on E3. The music concludes with a series of chords in the right hand and a melodic line in the left hand.

Vln. 39




Violin staff 2, measures 39-42. The music starts with a quarter note on G4, followed by a quarter note on A4, and a quarter note on Bb4. The next measure contains a quarter note on C5, a quarter note on Bb4, and a quarter note on A4. The final measure consists of a quarter note on G4, a dotted quarter note on F4, and a quarter note on E4.

Hpschd. 39



Piano staff 2, measures 39-42. The right hand features chords on G4, A4, and Bb4. The left hand plays a melodic line starting on G3 and moving up to E4. The music ends with a final chord in the right hand and a note in the left hand.

Vln. 43



Violin staff 3, measures 43-46. The music begins with a quarter note on G4, followed by a quarter note on A4, and a quarter note on Bb4. The next measure contains a quarter note on C5, a quarter note on Bb4, and a quarter note on A4. The final measure consists of a quarter note on G4, a dotted quarter note on F4, and a quarter note on E4.

Hpschd. 43



Piano staff 3, measures 43-46. The right hand starts with a quarter note on G4, followed by a quarter note on A4, and a quarter note on Bb4. The left hand begins with a quarter note on G3, followed by a quarter note on F3, and a quarter note on E3. The music concludes with a series of chords in the right hand and a melodic line in the left hand.

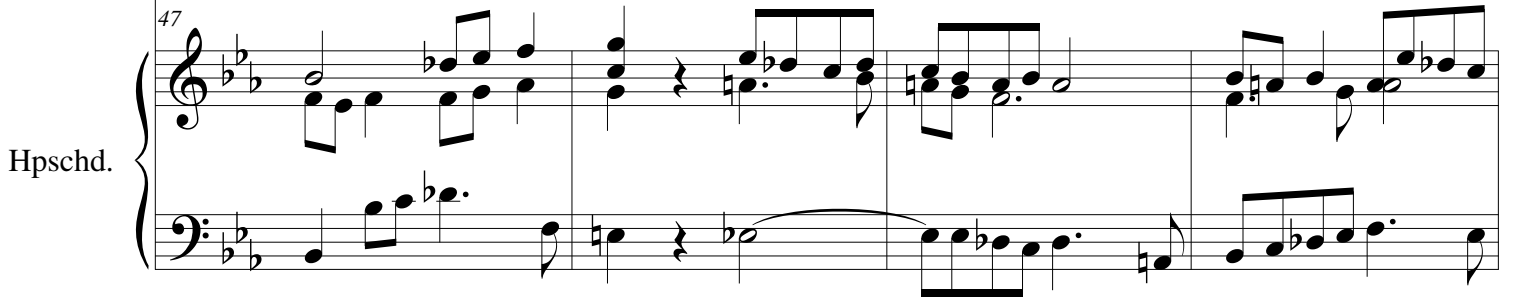
SONATA in F MINOR - Benna - Score

Vln. 47



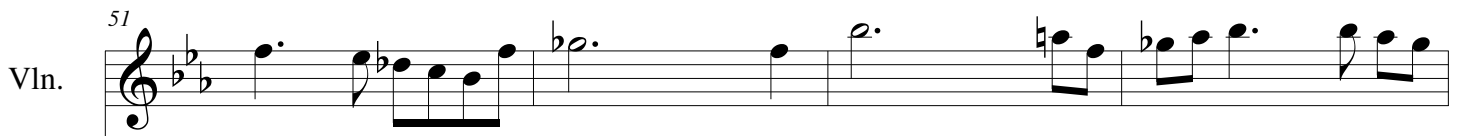
Violin staff 1, measures 47-50. The staff begins with a treble clef and a key signature of two flats (F minor). The music consists of a series of eighth and sixteenth notes, with some accidentals (flats) and a dotted quarter note at the end of the first measure.

Hpschd. 47



Piano staff 1, measures 47-50. The staff begins with a treble clef and a key signature of two flats. The music features chords and moving lines in both the treble and bass staves, with a prominent bass line in the lower register.

Vln. 51



Violin staff 2, measures 51-54. The staff begins with a treble clef and a key signature of two flats. The music consists of a series of eighth and sixteenth notes, with some accidentals (flats) and a dotted quarter note at the end of the first measure.

Hpschd. 51



Piano staff 2, measures 51-54. The staff begins with a treble clef and a key signature of two flats. The music features chords and moving lines in both the treble and bass staves, with a prominent bass line in the lower register.

Vln. 55



Violin staff 3, measures 55-58. The staff begins with a treble clef and a key signature of two flats. The music consists of a series of eighth and sixteenth notes, with some accidentals (flats) and a dotted quarter note at the end of the first measure.

Hpschd. 55



Piano staff 3, measures 55-58. The staff begins with a treble clef and a key signature of two flats. The music features chords and moving lines in both the treble and bass staves, with a prominent bass line in the lower register.

SONATA in F MINOR - Benna - Score

Vln. 58

Violin staff showing measures 58, 59, and 60. The key signature is F minor (three flats). The melody consists of eighth and quarter notes with some rests.

Hpschd. 58

Piano accompaniment for measures 58, 59, and 60. The right hand features chords and eighth-note patterns, while the left hand provides a bass line with quarter and eighth notes.

Vln. 61

Violin staff showing measures 61, 62, and 63. The melody continues with eighth and quarter notes, including a slur over measures 62 and 63.

Hpschd. 61

Piano accompaniment for measures 61, 62, and 63. The right hand has a busy texture with eighth-note chords and single notes, while the left hand has a steady eighth-note bass line.

Vln. 65

Violin staff showing measures 65, 66, and 67. The melody features a slur over measures 66 and 67.

Hpschd. 65

Piano accompaniment for measures 65, 66, and 67. The right hand continues with eighth-note chords and single notes, while the left hand has a bass line with quarter and eighth notes.

Vln. 81

Hpschd. 81

This system contains measures 81 through 86. The Violin part (Vln.) is written on a single staff in treble clef with a key signature of two flats (B-flat and E-flat). It features a melodic line with eighth and sixteenth notes, some with slurs and accents. The Harpsichord part (Hpschd.) is written on a grand staff (treble and bass clefs). The right hand provides harmonic support with chords and moving lines, while the left hand plays a steady eighth-note accompaniment.

Vln. 87

Hpschd. 87

This system contains measures 87 through 92. The Violin part continues with its melodic line, including a trill (tr) in measure 90. The Harpsichord part shows more complex textures, with the right hand playing sixteenth-note patterns and the left hand maintaining its accompaniment.

Vln. 93

Hpschd. 93

This system contains measures 93 through 98. The Violin part features a trill (tr) in measure 93 and ends with a double bar line and repeat sign. The Harpsichord part also includes a double bar line and repeat sign in measure 93, followed by a final cadence in the right hand.

SONATA in F MINOR - Benna - Score

99

Vln.

Hpschd.

Detailed description: This system contains measures 99 through 104. The Violin part (Vln.) is written in a single staff with a treble clef and a key signature of two flats (B-flat and E-flat). It features a melodic line with eighth and sixteenth notes, some beamed together, and a half note. The Harpsichord part (Hpschd.) is written in two staves (treble and bass clefs). The right hand plays chords and single notes, while the left hand plays a bass line with eighth and sixteenth notes. The system concludes with a repeat sign at the end of measure 104.

105

Vln.

Hpschd.

Detailed description: This system contains measures 105 through 110. The Violin part (Vln.) continues the melodic line from the previous system, ending with a double bar line and repeat dots. The Harpsichord part (Hpschd.) continues with chords and bass line, also ending with a double bar line and repeat dots. The system concludes with a repeat sign at the end of measure 110.

SONATA in F MINOR

for Violin and Harpsichord

Violin

Filippo Benna (fl.ca.1717 - fl.1794)

Arr. Michel Rondeau

1. Adagio assai $\text{♩} = 60$

3

6

9

11

13

15

17

SONATA in F MINOR - Benna - Violin

19

tr

22

2. Andante

27

32

38

43

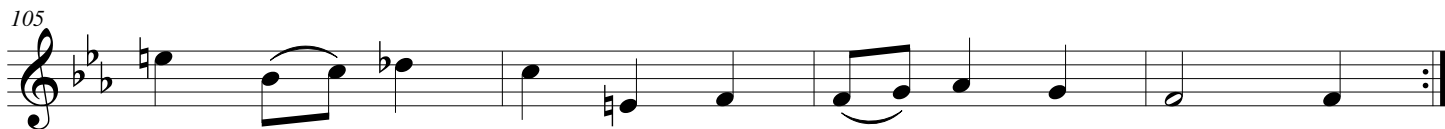
48

53

58

SONATA in F MINOR - Benna - Violin

3



SONATA in F MINOR

for Violin and Harpsichord

Filippo Benna (fl.ca.1717 - fl.1794)

Arr. Michel Rondeau

Harpsichord

Violin

1. Adagio assai ♩ = 60

Harpsichord

Vln.

Hpschd.

Vln.

Hpschd.

SONATA in F MINOR - Benna - Harpsichord

2

Vln. Hpschd.

7 *tr*

7

Detailed description: This system covers measures 2-8. The violin part (Vln.) begins with a melodic line starting on G4, featuring a trill (tr) on the eighth measure. The harpsichord (Hpschd.) provides accompaniment with chords and moving lines in both hands.

Vln. Hpschd.

9

9

Detailed description: This system covers measures 9-10. The violin part continues with a melodic line, and the harpsichord accompaniment remains active with chords and moving lines.

Vln. Hpschd.

11

11

Detailed description: This system covers measures 11-10. The violin part features a melodic line with some rests. The harpsichord accompaniment includes chords and moving lines.

Vln. Hpschd.

12

12

Detailed description: This system covers measures 12-11. The violin part continues with a melodic line. The harpsichord accompaniment includes chords and moving lines.

SONATA in F MINOR - Benna - Harpsichord

Vln. ¹³

Musical notation for the first violin part, starting at measure 13. The staff is in treble clef with a key signature of two flats (F minor). It features a melodic line with a series of sixteenth-note runs and rests.

Hpschd. ¹³

Musical notation for the harpsichord part, starting at measure 13. It consists of two staves (treble and bass clefs) with block chords and some moving lines.

Vln. ¹⁴

Musical notation for the first violin part, starting at measure 14. The melodic line continues with more sixteenth-note patterns and some slurs.

Hpschd. ¹⁴

Musical notation for the harpsichord part, starting at measure 14. The accompaniment includes chords and a more active bass line.

Vln. ¹⁶

Musical notation for the first violin part, starting at measure 16. The melodic line is highly rhythmic with many sixteenth notes.

Hpschd. ¹⁶

Musical notation for the harpsichord part, starting at measure 16. The accompaniment features chords and a steady bass line.

Vln. ¹⁸

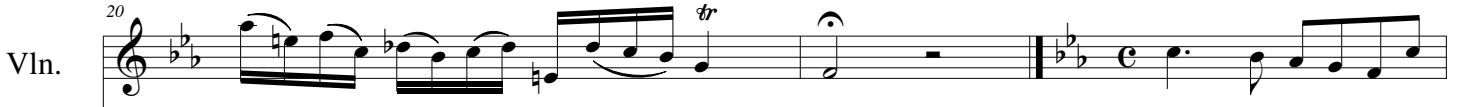
Musical notation for the first violin part, starting at measure 18. The melodic line continues with eighth and sixteenth notes.

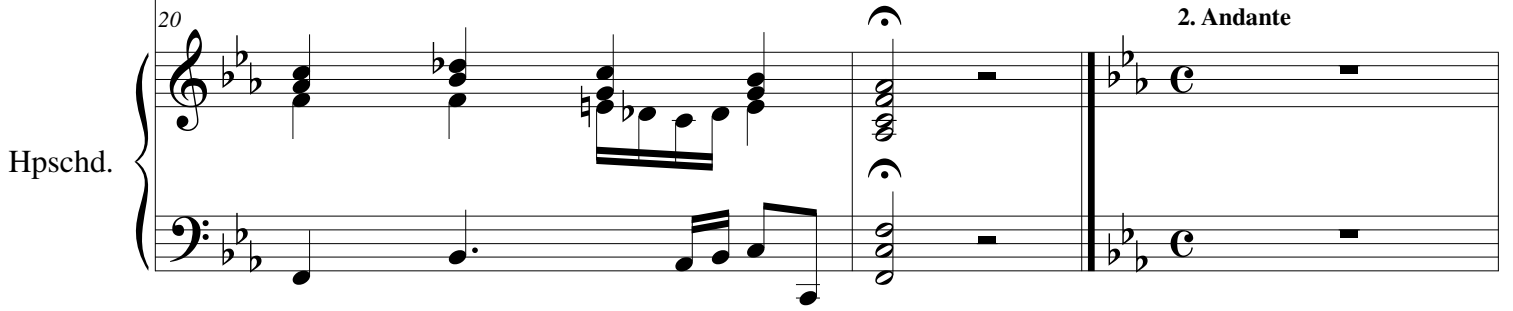
Hpschd. ¹⁸

Musical notation for the harpsichord part, starting at measure 18. The accompaniment includes chords and a moving bass line.

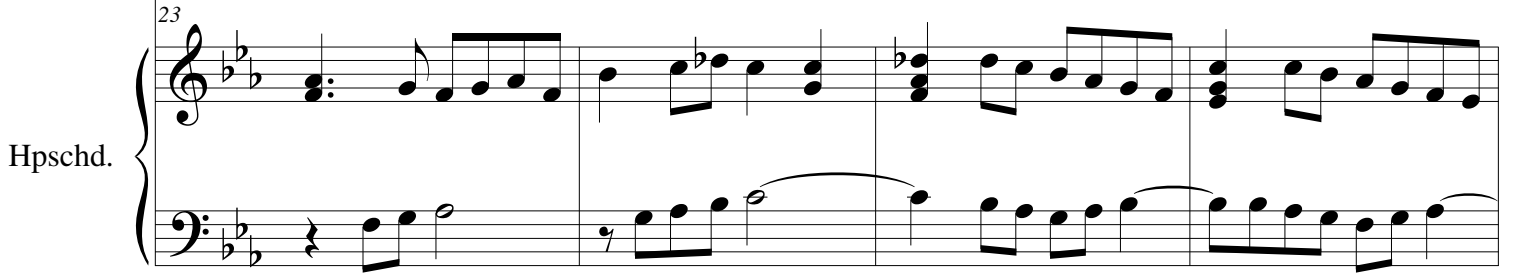
SONATA in F MINOR - Benna - Harpsichord

4

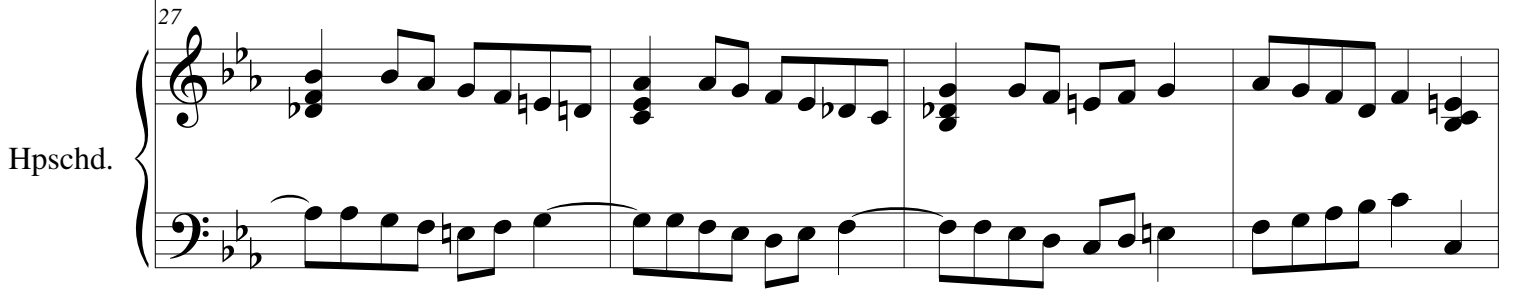
Vln. 

Hpschd. 

Vln. 

Hpschd. 

Vln. 

Hpschd. 

Vln. 

Hpschd. 

SONATA in F MINOR - Benna - Harpsichord

Vln. Musical notation for the first violin part, measures 35-38. The staff is in F minor and shows a melodic line with eighth and sixteenth notes.

Hpschd. Musical notation for the harpsichord part, measures 35-38. It features a rhythmic accompaniment with eighth notes and rests.

Vln. Musical notation for the second violin part, measures 39-42. The staff continues the melodic line from the first violin.

Hpschd. Musical notation for the harpsichord part, measures 39-42. The accompaniment includes chords and moving lines in both hands.

Vln. Musical notation for the first violin part, measures 43-46. The melodic line continues with various rhythmic values.

Hpschd. Musical notation for the harpsichord part, measures 43-46. The accompaniment features a mix of chords and eighth-note patterns.

Vln. Musical notation for the first violin part, measures 47-50. The melodic line shows some chromatic movement.

Hpschd. Musical notation for the harpsichord part, measures 47-50. The accompaniment includes chords and a more active bass line.

SONATA in F MINOR - Benna - Harpsichord

6

Vln. 51

Hpschd. 51

This system contains measures 51 to 54. The Violin part (Vln.) is written on a single staff in treble clef with a key signature of two flats (B-flat and E-flat). It begins with a dotted quarter note, followed by eighth and sixteenth notes, and ends with a quarter note. The Harpsichord part (Hpschd.) is written on two staves (treble and bass clefs). The right hand starts with a half note chord, followed by eighth and sixteenth notes. The left hand plays a steady eighth-note accompaniment.

Vln. 55

Hpschd. 55

This system contains measures 55 to 57. The Violin part continues with a series of eighth and sixteenth notes. The Harpsichord part features a more active right hand with eighth and sixteenth notes, while the left hand maintains a consistent eighth-note accompaniment.

Vln. 58

Hpschd. 58

This system contains measures 58 to 60. The Violin part shows a melodic line with some rests. The Harpsichord part has a right hand with eighth and sixteenth notes and a left hand with a steady eighth-note accompaniment.

Vln. 61

Hpschd. 61

This system contains measures 61 to 64. The Violin part features a melodic line with some rests. The Harpsichord part has a right hand with eighth and sixteenth notes and a left hand with a steady eighth-note accompaniment.

SONATA in F MINOR - Benna - Harpsichord

Vln. Hpschd.

65

65

Detailed description: This system covers measures 65 to 68. The violin part (Vln.) begins with a dotted quarter note on G4, followed by an eighth note on F4, and a quarter note on E4. It then features a half note on D4 with a slur over the next two measures. The harpsichord part (Hpschd.) starts with a quarter note on G4, followed by an eighth note on F4, and a quarter note on E4. It then features a half note on D4 with a slur over the next two measures. The key signature is two flats (B-flat and E-flat).

Vln. Hpschd.

69

69

Detailed description: This system covers measures 69 to 72. The violin part (Vln.) begins with a dotted quarter note on G4, followed by an eighth note on F4, and a quarter note on E4. It then features a half note on D4 with a slur over the next two measures. The harpsichord part (Hpschd.) starts with a quarter note on G4, followed by an eighth note on F4, and a quarter note on E4. It then features a half note on D4 with a slur over the next two measures. The key signature is two flats (B-flat and E-flat).

Vln. Hpschd.

73

73

Detailed description: This system covers measures 73 to 76. The violin part (Vln.) begins with a dotted quarter note on G4, followed by an eighth note on F4, and a quarter note on E4. It then features a half note on D4 with a slur over the next two measures. The harpsichord part (Hpschd.) starts with a quarter note on G4, followed by an eighth note on F4, and a quarter note on E4. It then features a half note on D4 with a slur over the next two measures. The key signature is two flats (B-flat and E-flat).

Vln. Hpschd.

77

77

3. Allegro

Detailed description: This system covers measures 77 to 80. The violin part (Vln.) begins with a dotted quarter note on G4, followed by an eighth note on F4, and a quarter note on E4. It then features a half note on D4 with a slur over the next two measures. The harpsichord part (Hpschd.) starts with a quarter note on G4, followed by an eighth note on F4, and a quarter note on E4. It then features a half note on D4 with a slur over the next two measures. The key signature is two flats (B-flat and E-flat). The tempo marking '3. Allegro' is present. The system ends with a double bar line and a repeat sign.

SONATA in F MINOR - Benna - Harpsichord

8

Vln. ⁸¹

Hpschd.

This system contains measures 81 through 86. The Violin part (Vln.) is written in a single staff with a treble clef and a key signature of two flats (F minor). It features a melodic line with eighth and sixteenth notes, including some slurs and a trill-like ornament in measure 85. The Harpsichord part (Hpschd.) is written in two staves (treble and bass clefs) and provides a harmonic accompaniment with chords and moving lines in both hands.

87

Vln. ⁸⁷

Hpschd.

This system contains measures 87 through 92. The Violin part continues its melodic development, featuring a trill in measure 89. The Harpsichord part continues with its accompaniment, showing some rhythmic activity in the right hand in measures 90-92.

93

Vln. ⁹³

Hpschd.

This system contains measures 93 through 98. The Violin part has a trill in measure 93 and a repeat sign in measure 94. The Harpsichord part also features a repeat sign in measure 94, indicating a first ending. The key signature remains two flats.

99

Vln. ⁹⁹

Hpschd.

This system contains measures 99 through 104. The Violin part continues with its melodic line. The Harpsichord part continues with its accompaniment, showing some rhythmic activity in the right hand in measures 100-104.

SONATA in F MINOR - Benna - Harpsichord

Vln.

Hpschd.

The image shows a musical score for measures 105 to 108 of a sonata. The top staff is for the Violin (Vln.) and the bottom two staves are for the Harpsichord (Hpschd.). The key signature is F minor (three flats) and the time signature is 4/4. Measure 105: Violin plays a half note G4, a quarter note A4, a quarter note Bb4, and a half note C5. Harpsichord right hand plays a half note chord of G4-Bb4, a quarter note chord of A4-C5, and a half note chord of Bb4-D5. Harpsichord left hand plays a half note G3, a quarter note A3, and a half note Bb3. Measure 106: Violin plays a half note D5, a quarter note E5, and a half note F5. Harpsichord right hand plays a half note chord of D5-F5, a quarter rest, and a half note chord of E5-G5. Harpsichord left hand plays a half note D4, a quarter rest, and a half note E4. Measure 107: Violin plays a half note G5, a quarter note A5, and a half note B5. Harpsichord right hand plays a half note chord of G5-B5, a quarter rest, and a half note chord of A5-C6. Harpsichord left hand plays a half note G4, a quarter note A4, and a half note B4. Measure 108: Violin plays a half note C6, a quarter note B5, and a half note A5. Harpsichord right hand plays a half note chord of C6-E6, a quarter rest, and a half note chord of B5-D6. Harpsichord left hand plays a half note C5, a quarter note B4, and a half note A4. The score ends with a double bar line and repeat dots.