

Cello

# String Quartet No 2 in Bb

Jan Ladislav Dussek  
(1760-1812)

Based on c.1807 Breitkopf & Härtel edition available as parts at [imslp.org](http://imslp.org), and a manuscript score in Bibliothèque Nationale de France MS9868.

Set in MuseScore 2 in 2016 by Chris Darwin ([cjd@cantab.net](mailto:cjd@cantab.net)).

## Violoncello

## String Quartet Op 60 no 2 in Bb

Jan Ladislav Dussek (Berlin 1806)

**Allegretto**  $\text{♩} = 60$ 

7

*p*

*dolce*

10

*p*

*pp*

*sotto voce*

18

*f*

*ff*

24

30

*sfz*

*pp*

*sotto voce*

36

*p*

*ff*

*diminuendo*

42

*p*

*ff*

48

*p*

*pp*

*dolce*

*rf*

*p*

*sotto voce*

55

*crescendo*

*rf*

*p*

*sotto voce*

*dolce*

62

*rf*

*p*

*sotto voce*

*crescendo*

*sfz*

69

*f*

74



80



85



91



96



103



110



117



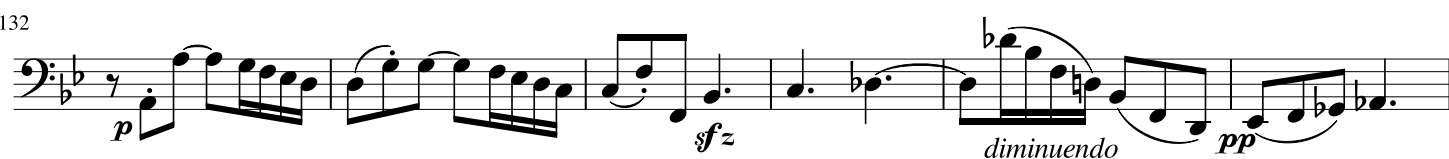
123



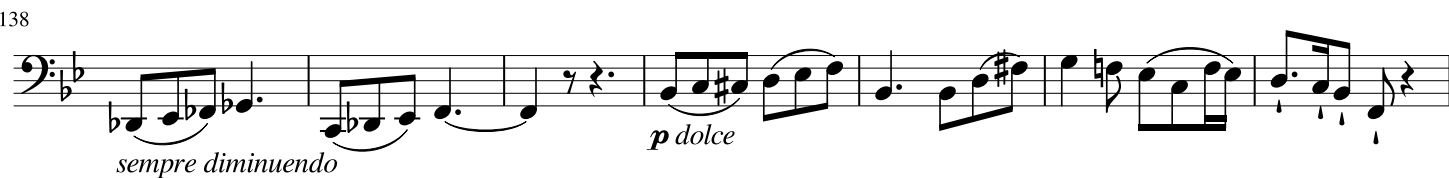
128



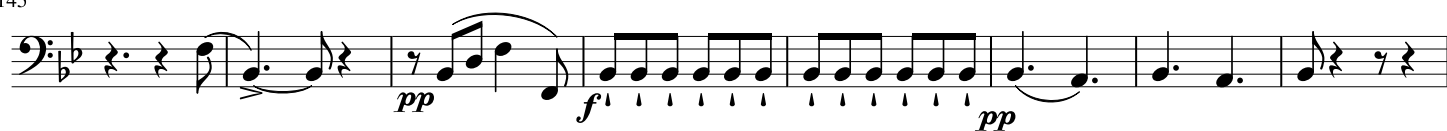
132



138



145



153



159



167



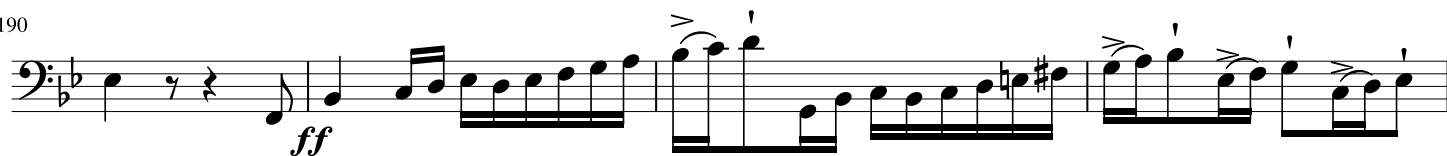
175



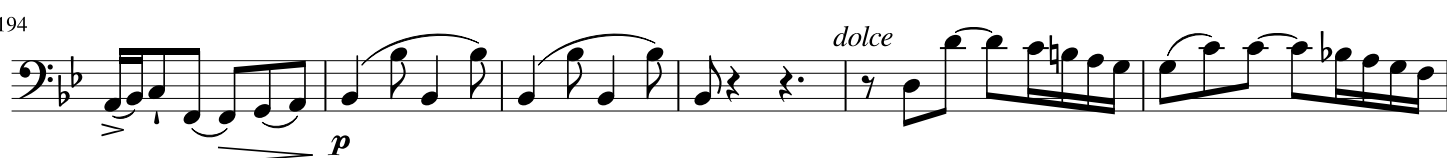
182



190



194



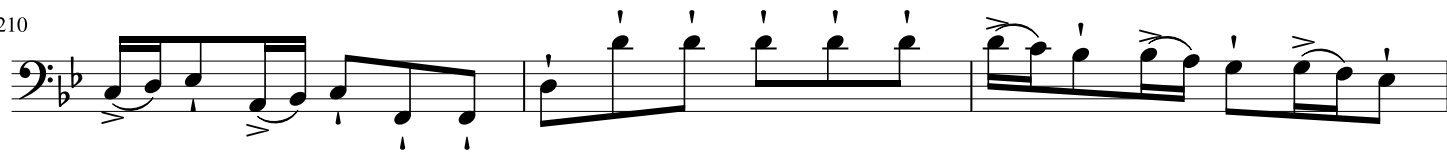
200



206



210



213



# Adagio pathetico ♩ = 80

7

*f* *pp* *f* *pp*

11

*rf* *diminuendo*

14

*sfz*

21 solo con espressione

*mp* *tr* *p*

28

*f*

32 solo con espressione *espressivo ma mezza voce*

*ppp* *tr* *p*

37

*fff*

45

*rf*

48

*pp* *dolce* *espressione* *sotto voce*

53 *p* 3 *ppp* pizz arco *p dolce*

58 *dolce* *mezzo voce*

62 *crescendo* *f* *f*

67 *pp dolce* *sotto voce* *solo con espressione*

72 3 3 3 *p* 2

78 *f* *ppp*

83 *parlando* *p* 3 3 *p* 2 *p*

91 *ff* 3 3 3 *p* *f*

96 *p*

101 3 3 *sfz* *sfz* *sfz*

108 *rf* *pp* *dolce* *sotto voce*

113 *sotto voce* *parlando*

119 *pizz* *col arco* *p*

123

126 *ff* *p* *ppp* *ff*

131 *ff* *pp* *smorzando*

135 *p* *mezzo voce*

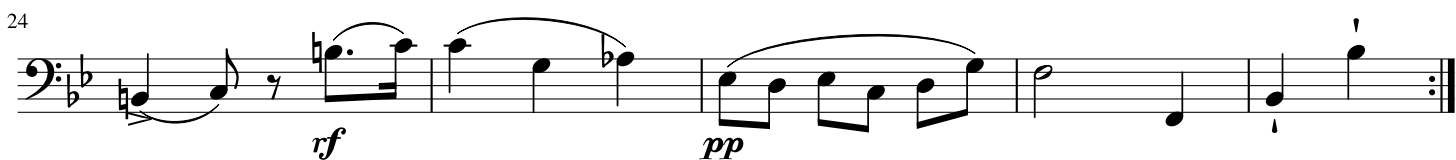
137

140 *f* *pp* *smorzando*

145 *morendo* *perdendosi* *ppp*

Seque il Menuetto

# Menuetto non presto e semplice ♩ = 120



## Trio Amabile





Allegro non troppo ♩ = 144

10

18

26

36

43

52

61

71

80

*p*

*p*

*p*

*f*

*pp*

*sotto voce*

*ppp*

*sfz*

*p*

*f*

*sf*

*sfz*

*p*

*pp*

*f*

*ff*

*p*

*pp*

*ff*

*p*

*pp*

*ppp*

*ff*

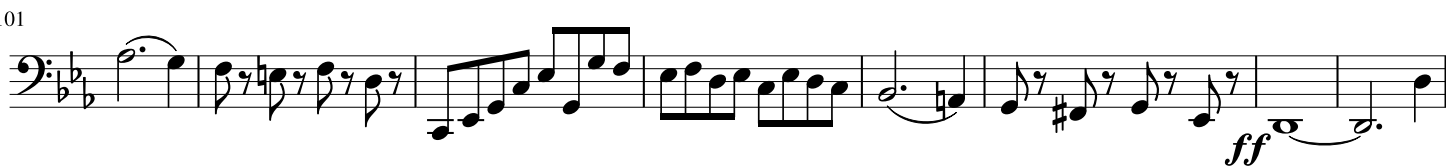
88



95



101



109



123



133



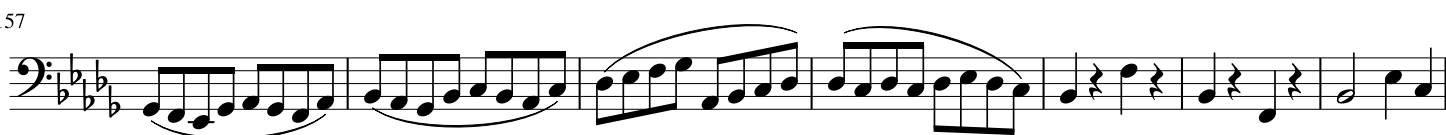
143



152



157



164



174



184



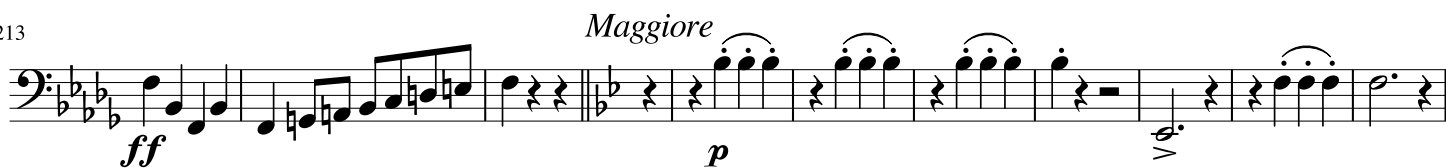
196



203



213



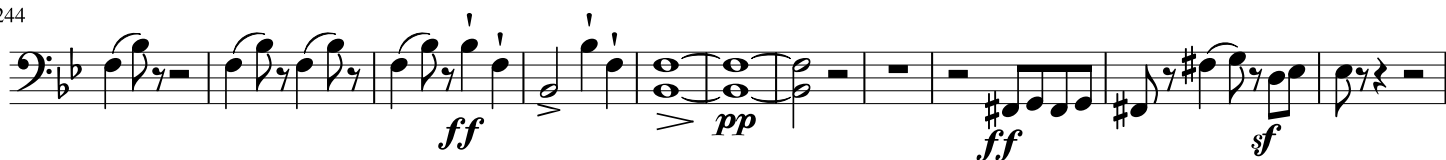
223



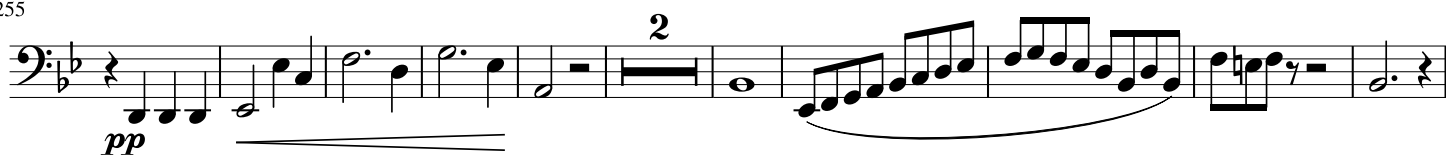
235



244



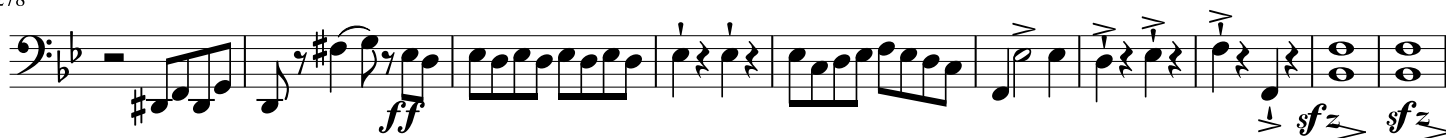
255



267



278



288

